



**1005
BRENTWOOD
PARKWAY**
STOCKBRIDGE,
GA 30281

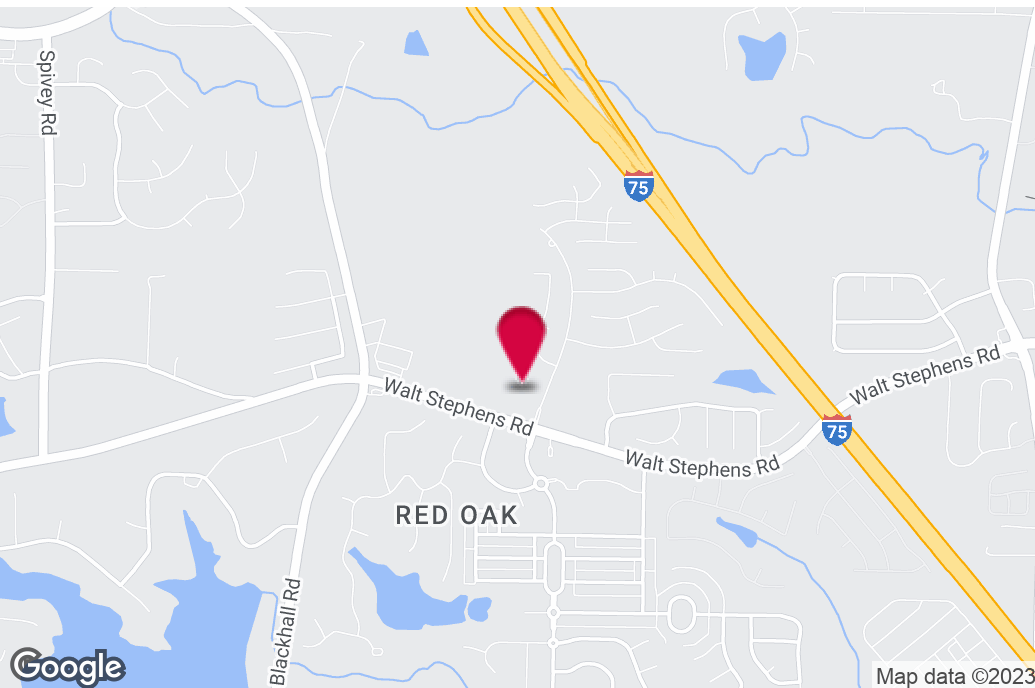
Retail Space For Lease

RYAN CLARK
Senior Advisor
404.942.2037
rclark@kingindustrial.com

King *Industrial
Realty, Inc.*

Industrial • Commercial • Investment
404.942.2000 | kingindustrial.com

FOR LEASE
1,500-3,000+/- SF
RETAIL SPACE



PROPERTY HIGHLIGHTS

- High Traffic Complex
- Multi-Tenant Building with Dollar General as Anchor
- Ideal Location for Retail Establishments
- Ample Parking

OFFERING SUMMARY

Available SF:	1,500 - 3,000
Lot Size:	3.16 Acres
Building Size:	26,031 SF
Zoning:	C-2

RYAN CLARK

Senior Advisor

404.942.2037

rclark@kingindustrial.com

Every effort has been made to provide accurate information, but no liability is assumed for errors or omissions.



Industrial • Commercial • Investment
404.942.2000 | kingindustrial.com

ADDITIONAL PHOTOS



RYAN CLARK

Senior Advisor

404.942.2037

rclark@kingindustrial.com

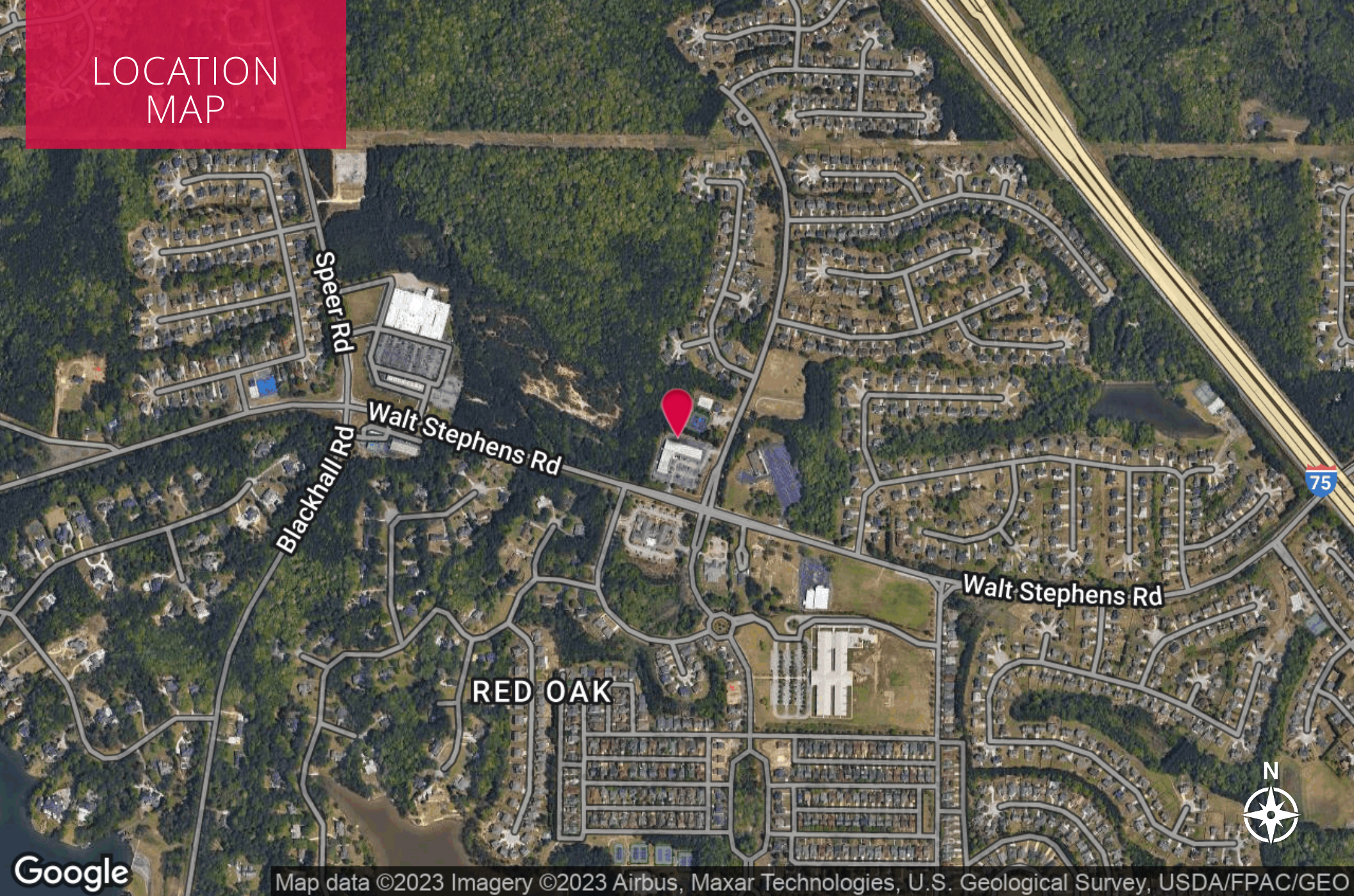
Every effort has been made to provide accurate information, but no liability is assumed for errors or omissions.

King Industrial
Realty, Inc.

CORFAC
INTERNATIONAL

Industrial • Commercial • Investment
404.942.2000 | kingindustrial.com

LOCATION MAP



Map data ©2023 Imagery ©2023 Airbus, Maxar Technologies, U.S. Geological Survey, USDA/FPAC/GEO

RYAN CLARK

Senior Advisor

404.942.2037

rclark@kingindustrial.com

Every effort has been made to provide accurate information, but no liability is assumed for errors or omissions.

King Industrial
Realty, Inc.

CORFAC
INTERNATIONAL

Industrial • Commercial • Investment
404.942.2000 | kingindustrial.com