

1999 Mt Read Blvd

Rochester, NY 14615



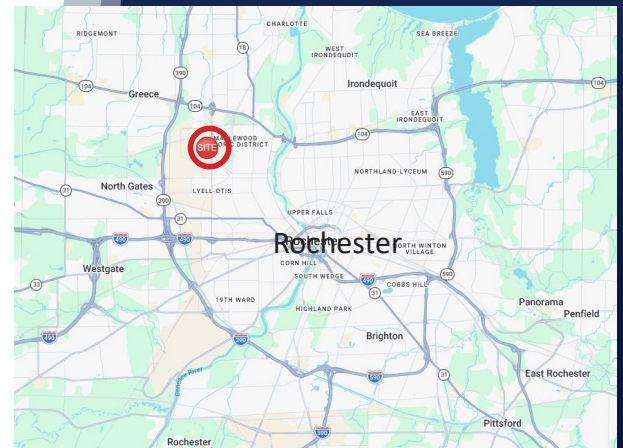
Space Available

#14 - 18,500 SF

#11 - 6,455 SF

Overview

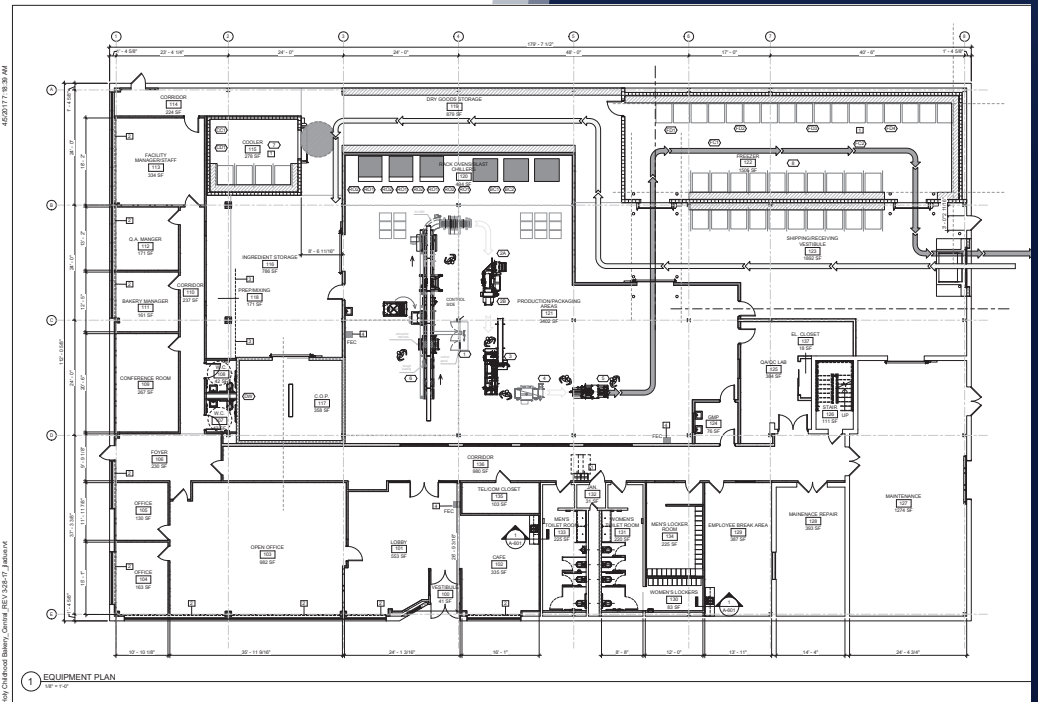
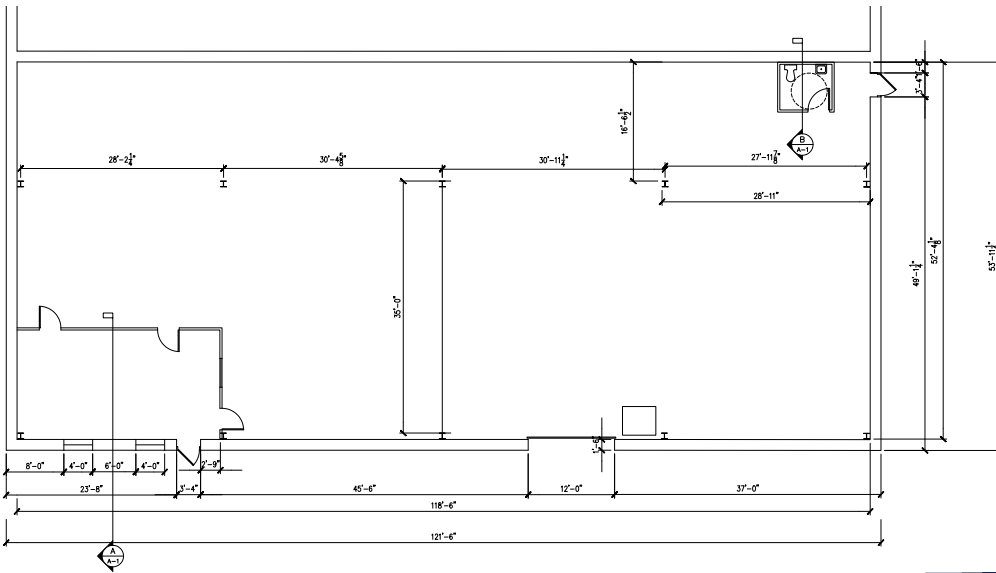
Primary access is from Mount Read Blvd immediately south of Ridgeway Ave. Adjacent neighbors are Eastman Kodak to the north, west, and south, and Holleder Industrial Park to the east. Access to I-390 is available approximately 1 mile to the west at the intersection of Ridgeway Ave, and Ridge Road is located less than one mile to the north. The Greater Rochester International Airport is approximately 4 miles to the south.



Highlights

- Ideal Industrial Space
- Central Location in the City of Rochester
- High Ceilings
- Includes a Loading Dock and Drive-In Bay





Building Relationships. Creating Spaces.