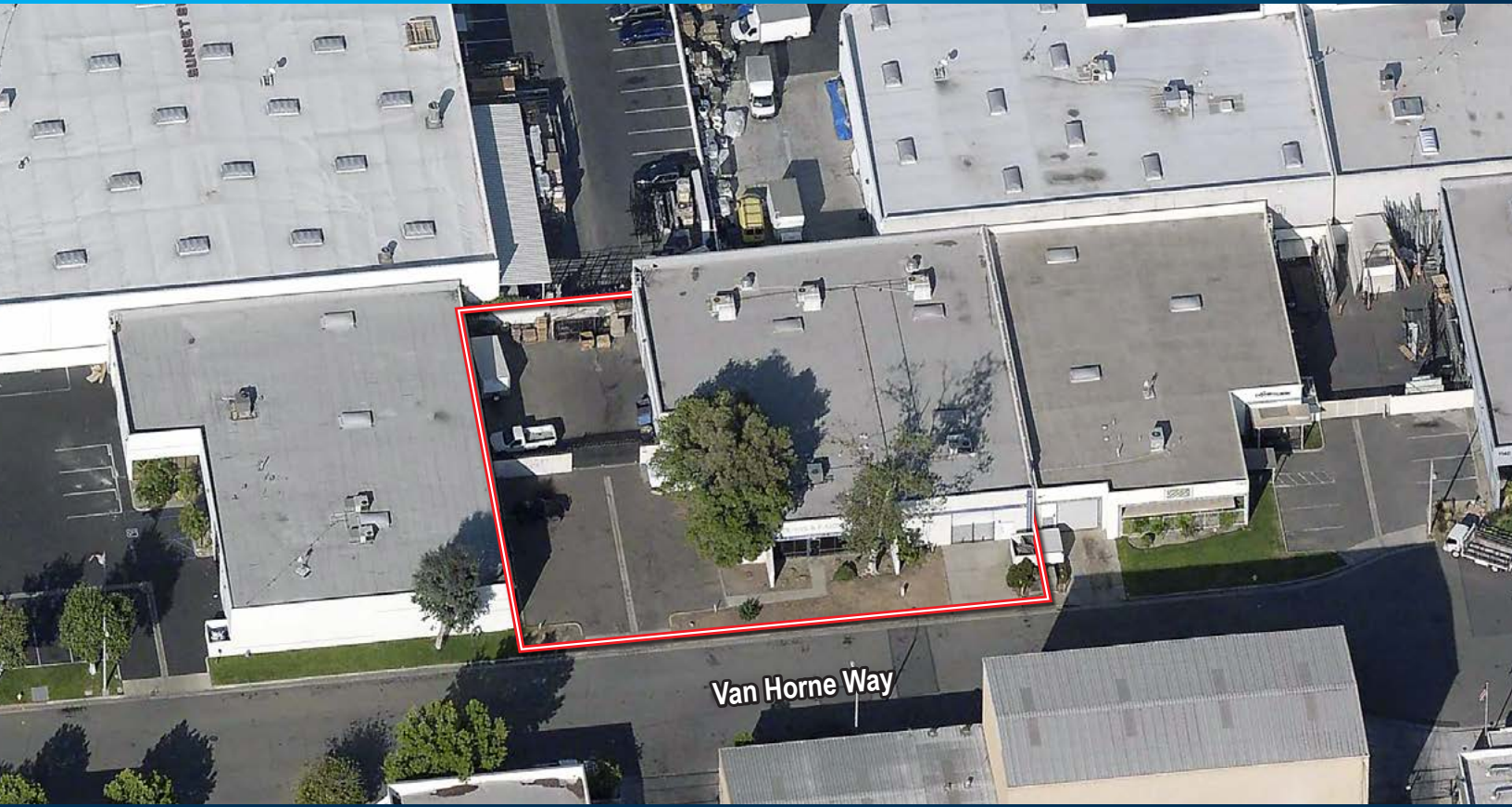


# FOR LEASE

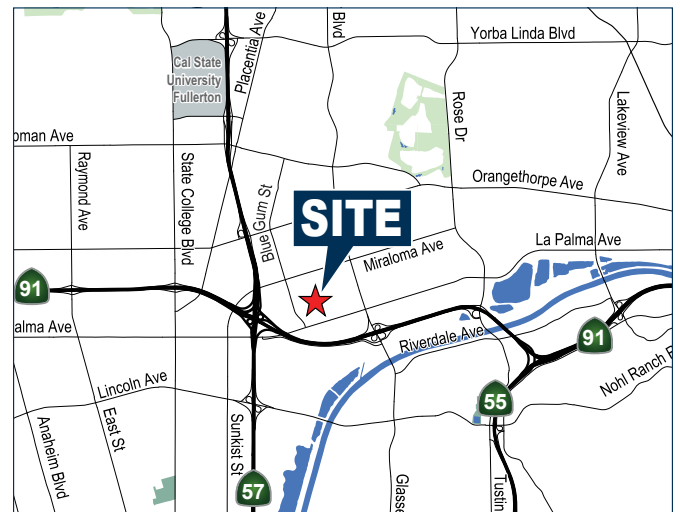
±9,680 SQ. FT.  
Industrial Building

1170 N. VAN HORNE WAY | ANAHEIM | CA



## PROPERTY FEATURES

- ± 9,680 Sq. Ft. Industrial Building
- ± 2,033 Sq. Ft. of Office Space
- 400 Amps of 120/208 Volt (Verify)
- Two (2) Ground Level Doors
- 16' Warehouse Clearance
- 2.0/1,000 Sq. Ft. Parking Ratio
- Convenient Access to the Riverside (91) and Santa Ana (57) Freeways



**MIKE HEFNER, SIOR**  
Executive Vice President | Partner  
(714) 935-2331  
mhefner@voitco.com  
License #00857352

**BRENDEN HEFNER**  
Senior Associate  
(714) 935-2326  
bhefner@voitco.com  
License #02114046

**Voit**  
REAL ESTATE SERVICES

**HV** HEFNER  
VERNICK  
TEAM

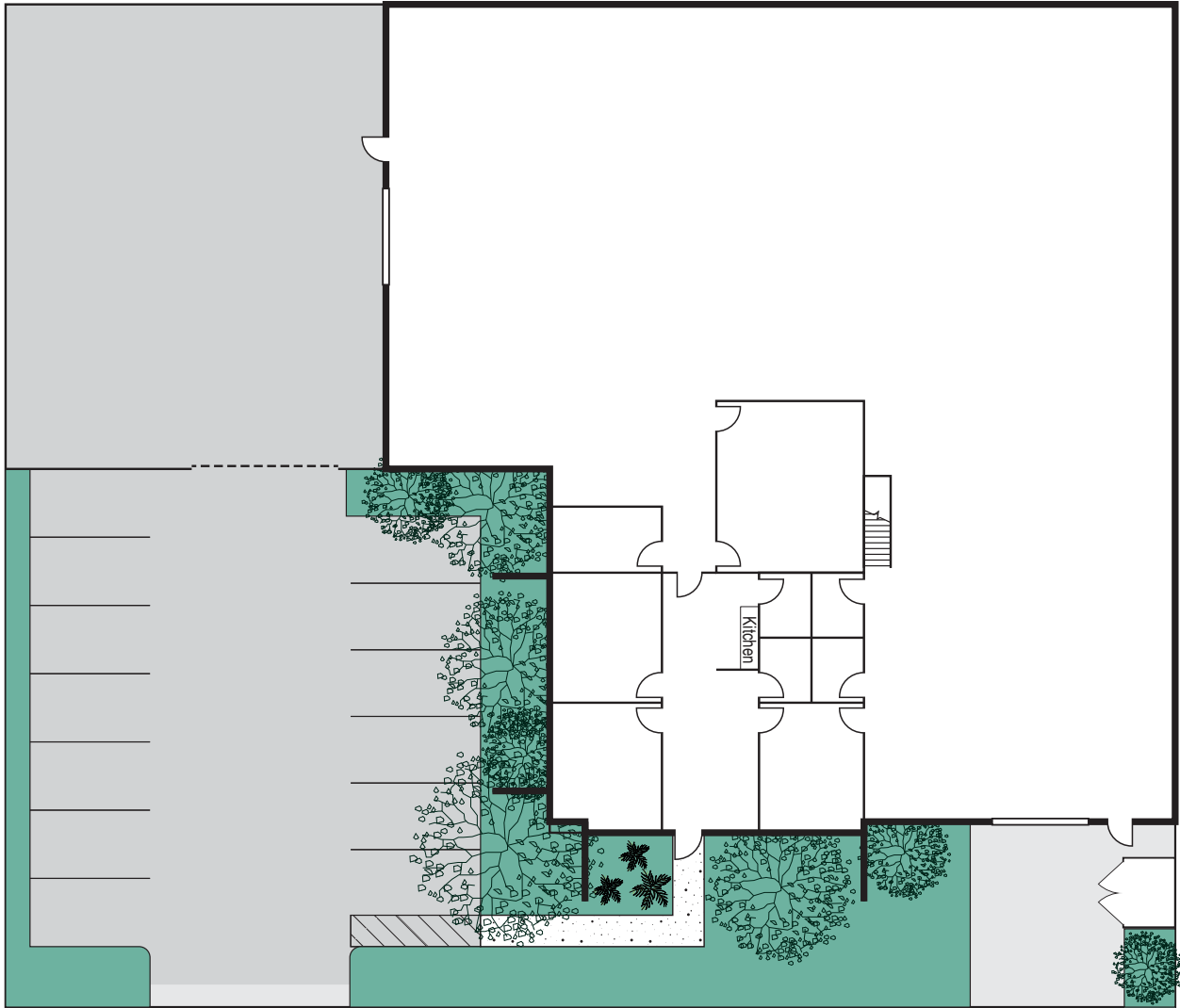
2400 E. Katella Ave., Suite 750  
Anaheim, CA 92806  
www.VoitCo.com

# FOR LEASE

±9,680 SQ. FT.  
Industrial Building

1170 N. VAN HORNE WAY | ANAHEIM | CA

## SITE PLAN



\*Not to scale

VAN HORNE WAY

**MIKE HEFNER, SIOR**  
Executive Vice President | Partner  
(714) 935-2331  
mhefner@voitco.com  
License #00857352

**BRENDEN HEFNER**  
Senior Associate  
(714) 935-2326  
bhefner@voitco.com  
License #02114046

**Voit**  
REAL ESTATE SERVICES

**HV** HEFNER  
VERNICK  
TEAM

2400 E. Katella Ave., Suite 750  
Anaheim, CA 92806  
www.VoitCo.com