



# BLACKEAGLE

CENTER

## Red Hawk Court

9292 W. Barnes Drive, Boise, ID 83709



- ◆ Conveniently located single story 14,123 square foot building
- ◆ Located in the beautifully landscaped Blackeagle Center, a 45- acre business park developed by The Sundance Company
- ◆ Easy access to Cole/Overland and Downtown Connector freeway interchanges
- ◆ Large window areas provide generous natural light
- ◆ Multiple access doorways
- ◆ Over three million sq ft of amenities / services within 1-1/2 mile radius



**Call For Details**  
**(208) 322-7300**

(208) 322-7300

[www.sundanceco.com](http://www.sundanceco.com)

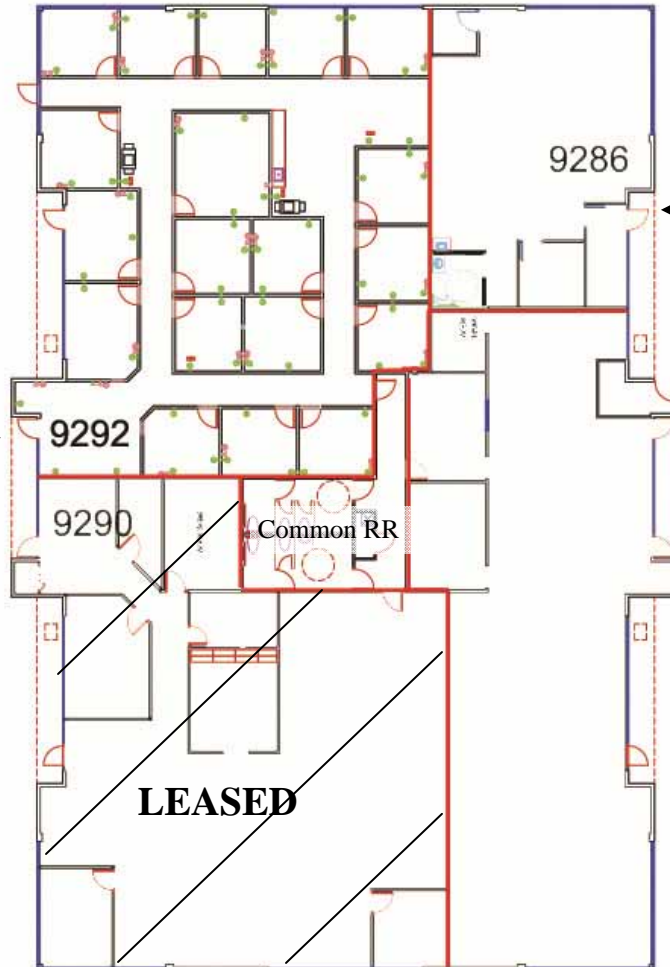
*The*  
**SUNDANCE**  
*Company*

# Red Hawk Court

9292 W. Barnes Drive  
Boise, ID 83709

**9,672 SF Available**

**9292**  
4,450 SF Available



W. Barnes Drive



Form 17 7021

(208) 322-7300

[www.sundanceco.com](http://www.sundanceco.com)

*The*  
**SUNDANCE**  
*Company*