

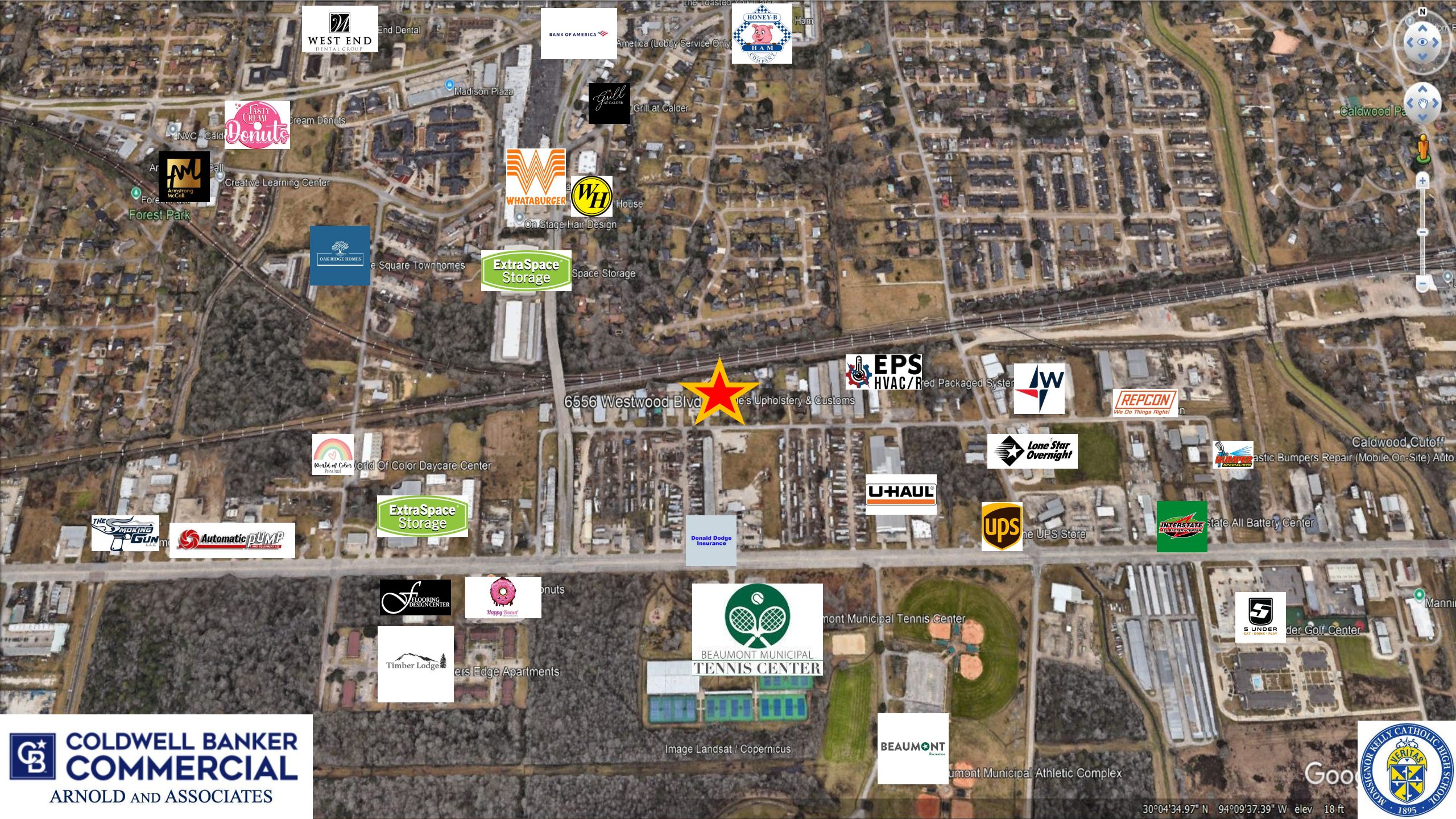
Transit Key

- IH 10
- US 287/ Hwy 69/ Hwy 96
 - US 287/ Hwy 69
 - Hwy 96
- TX 380 (MLK)
- Hwy 90 (College St)
- Hwy 105

Distance Estimates

- Jack Brooks Regional Airport: +/- 14 miles
- Louisiana Border: +/- 28 miles
- Port Arthur: +/- 23 miles
- Houston: +/- 85 miles
- Port of Houston: +/- 70 miles
- Port of Galveston: +/- 100 miles
- Port of Beaumont: +/- 3 miles

6556 Westwood Blvd.
Beaumont, Texas



6556 Westwood Blvd Upholstery & Customs



Image Landsat / Copernicus



30°04'34.97" N 94°09'37.39" W elev 18 ft