

Fully Secured Industrial Warehouse Available for Sublease

savills

FOR SUBLEASE 19010 South Alameda Street, Rancho Dominguez, CA 90221



SPACE PROFILE

27,691 SF
Total SF

11/30/2026
Term

1 Dock, 2 Ground Level
Loading Doors

Negotiable
Rental Rate

03/01/2026
Availability

18'
Clear Height



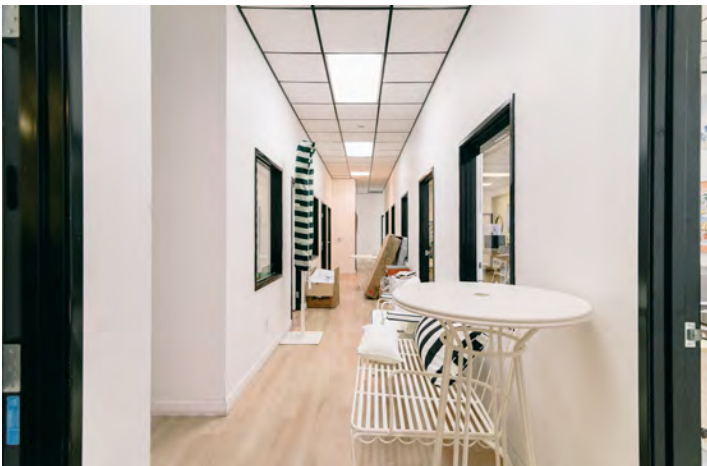
- 27,691 SF Available
- Built in 1977
- 27 Surface Parking Spaces
- Parking Ratio: 1.20/1,000 SF
- Fenced Lot
- Fully Sprinklered
- Building Height: 19'
- High Identity Corner Location
- Close Proximity to Ports of Los Angeles and Long Beach
- Immediate Access to 710 & 91 Freeways

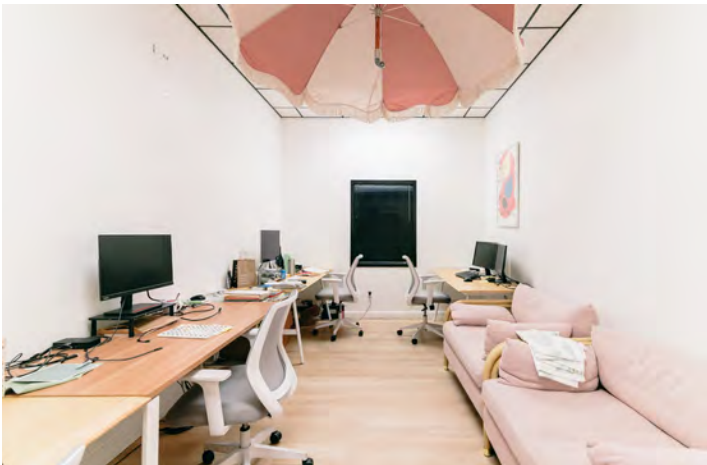
19010 S Alameda St, Rancho Dominguez, CA 90221

da Street, Rancho Dominguez, CA 90221

savills.us









Brett Lessman

Executive Managing Director

+ 1 949 683 5277

blessman@savills.us

License 01875709

The information contained in this communication has been obtained from a variety of sources believed to be reliable but has not been verified. NO WARRANTY OR REPRESENTATION, EXPRESS OR IMPLIED, IS MADE AS TO THE CONDITION OF THE PROPERTY OR ACCURACY OR COMPLETENESS OF THE INFORMATION CONTAINED HEREIN AND SAME IS SUBMITTED SUBJECT TO ERRORS, OMISSIONS, CHANGE OF PRICE, RENTAL OR OTHER CONDITIONS, WITHDRAWAL WITHOUT NOTICE AND TO ANY SPECIFIC CONDITIONS IMPOSED BY THE PROPERTY OWNER OR LESSOR.