



FLAMINGO PROFESSIONAL CENTER

2080 & 2090 E. FLAMINGO RD. | LAS VEGAS NV 89119

JARED BONNELL
JARED@ONECLV.COM
(702) 630-8016
B.1001717

**NEWLY RENOVATED PROFESSIONAL
MEDICAL AND OFFICE SUITES AVAILABLE
FOR LEASE | 1,500 -10,000 SF**



FLAMINGO PROFESSIONAL CENTER

2080 & 2090 E. FLAMINGO RD. | LAS VEGAS NV 89119

PROPERTY DETAILS

The Flamingo Professional Center is a 113,676 SF +/- property composed of two (2) separate multi-story buildings including a 2-story parking structure situated on a 4.25-acre lot with plenty of surface parking. The property is located within the East Flamingo Business Corridor on the signalized corner of East Flamingo Rd. & Burnham Ave. directly across the street from Desert Springs Hospital. The property is comprised of a mix of professional office and medical office tenants including several government tenants.

- Multiple suites ranging in size from 1,500 SF to 10,000 SF +/-
- Monthly base rent starting from \$1.50/SF Full Service Gross Lease which includes CAM
- Plenty of garage and service parking spaces
- On-site property manager, security and building engineer
- Multiple outdoor seating areas
- Approximately 3 miles from two major highways (I-15 & I-515)
- RTC bus route stop is located directly in front of property



JARED BONNELL

JARED@ONECLV.COM

(702) 630-8016

B.1001717



FLAMINGO PROFESSIONAL CENTER

2080 & 2090 E. FLAMINGO RD. | LAS VEGAS NV 89119



JARED BONNELL
JARED@ONECLV.COM
(702) 630-8016
B.1001717



FLAMINGO PROFESSIONAL CENTER

2080 & 2090 E. FLAMINGO RD. | LAS VEGAS NV 89119



JARED BONNELL

JARED@ONECLV.COM

(702) 630-8016

B.1001717



FLAMINGO PROFESSIONAL CENTER

2080 & 2090 E. FLAMINGO RD. | LAS VEGAS NV 89119



Nearby Amenities

Starbucks, Dunkin Donuts, Carl's Jr, McDonalds, Cane's, Red Lobster, Olive Garden, Chase Bank, Target, 99 Cents Only, Best Buy, Boulevard Mall, and more!

Distance To

I-15 - 3.3 Miles

I-515 - 2.4 Miles

McCarran Airport - 3 Miles

The Strip - 3.3 Miles

Disclaimer:

All information contained in this brochure is deemed reliable but not guaranteed. One Commercial Real Estate believes all information to be correct but assumes no legal responsibility for accuracy and it is prospective tenant and/or broker responsibility to verify all information.

DEMOGRAPHICS

	1 Mile	3 Miles	5 Miles
Population	22,081	159,497	456,38
Est. Average HH Income	\$50,919	\$58,342	\$57,699

JARED BONNELL

JARED@ONECLV.COM

(702) 630-8016

B.1001717



FLAMINGO PROFESSIONAL CENTER

2080 & 2090 E. FLAMINGO RD. | LAS VEGAS NV 89119



JARED BONNELL

JARED@ONECLV.COM

(702) 630-8016

B.1001717



FLAMINGO PROFESSIONAL CENTER

2080 & 2090 E. FLAMINGO RD. | LAS VEGAS NV 89119



JARED BONNELL

JARED@ONECLV.COM

(702) 630-8016

B.1001717



FLAMINGO PROFESSIONAL CENTER

2080 & 2090 E. FLAMINGO RD. | LAS VEGAS NV 89119



JARED BONNELL

JARED@ONECLV.COM

(702) 630-8016

B.1001717



FLAMINGO PROFESSIONAL CENTER

2080 & 2090 E. FLAMINGO RD. | LAS VEGAS NV 89119



JARED BONNELL

JARED@ONECLV.COM

(702) 630-8016

B.1001717



FLAMINGO PROFESSIONAL CENTER

2080 & 2090 E. FLAMINGO RD. | LAS VEGAS NV 89119



JARED BONNELL

JARED@ONECLV.COM

(702) 630-8016

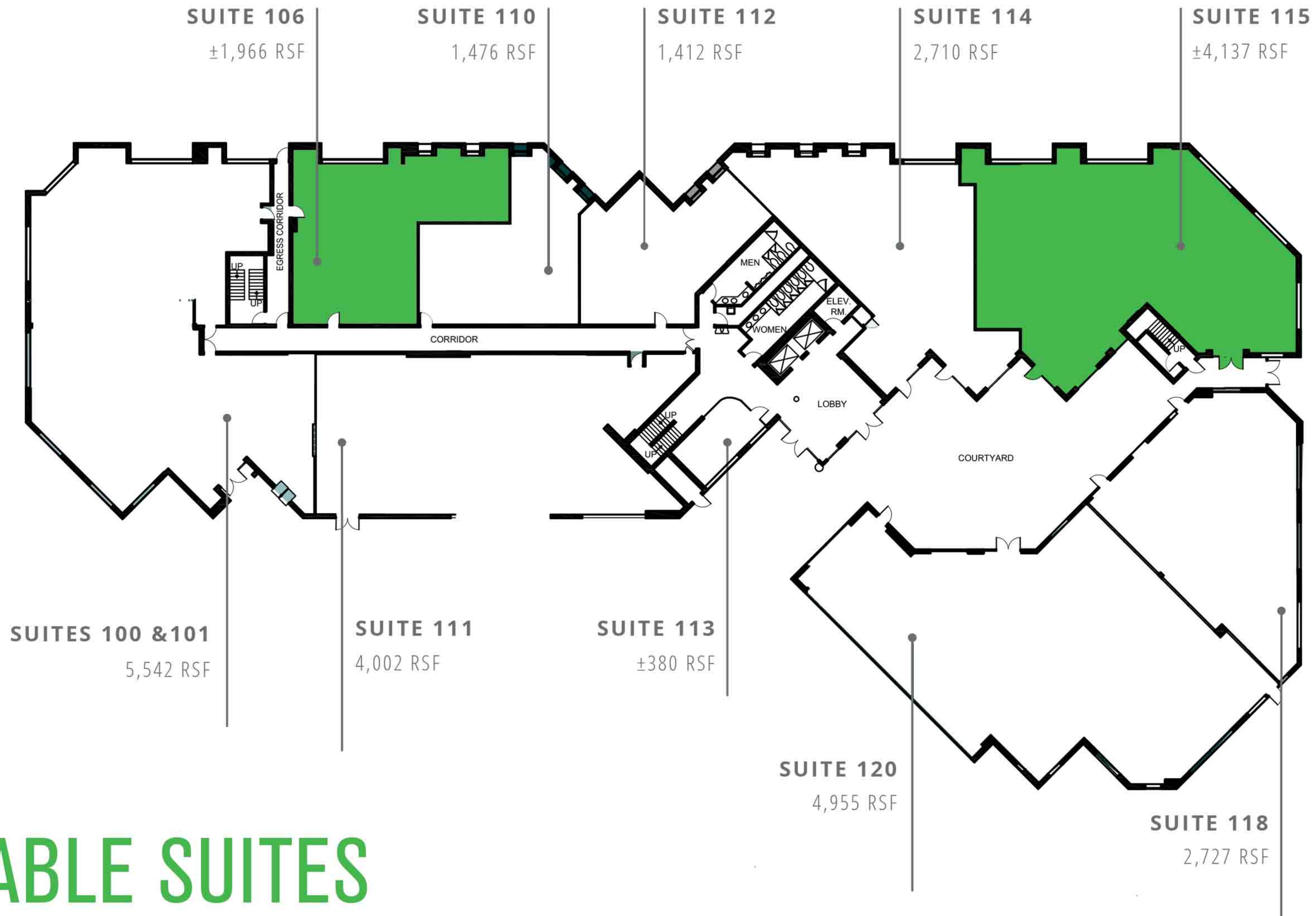
B.1001717



FLAMINGO PROFESSIONAL CENTER

2080 & 2090 E. FLAMINGO RD. | LAS VEGAS NV 89119

2080 | FIRST FLOOR



AVAILABLE SUITES

JARED BONNELL

JARED@ONECLV.COM

(702) 630-8016

B.1001717

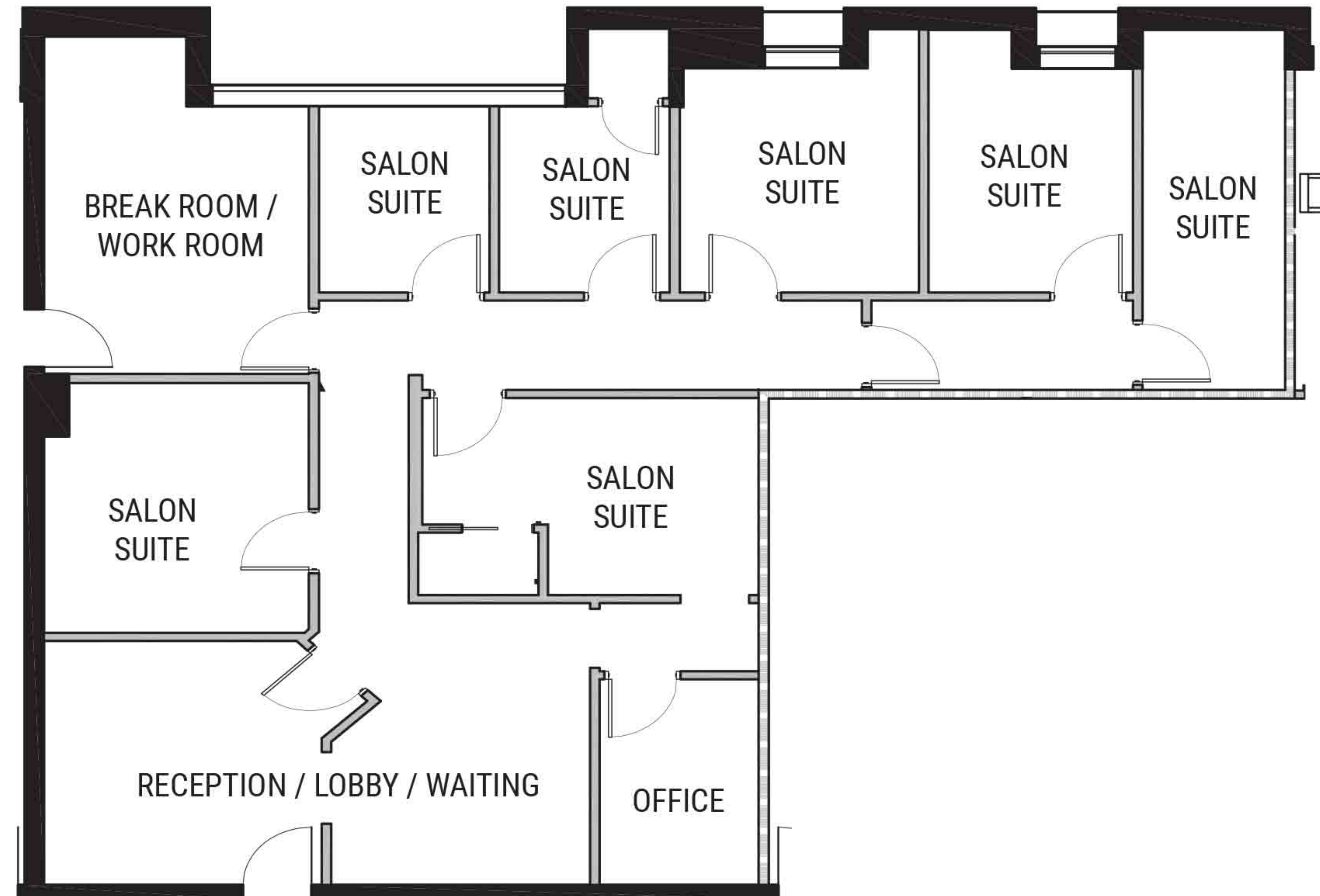


FLAMINGO PROFESSIONAL CENTER

2080 & 2090 E. FLAMINGO RD. | LAS VEGAS NV 89119

AVAILABLE FOR LEASE

2080 - SUITE 106
FORMER HAIR SALON
1,966 RSF ±



JARED BONNELL

JARED@ONECLV.COM

(702) 630-8016

B.1001717



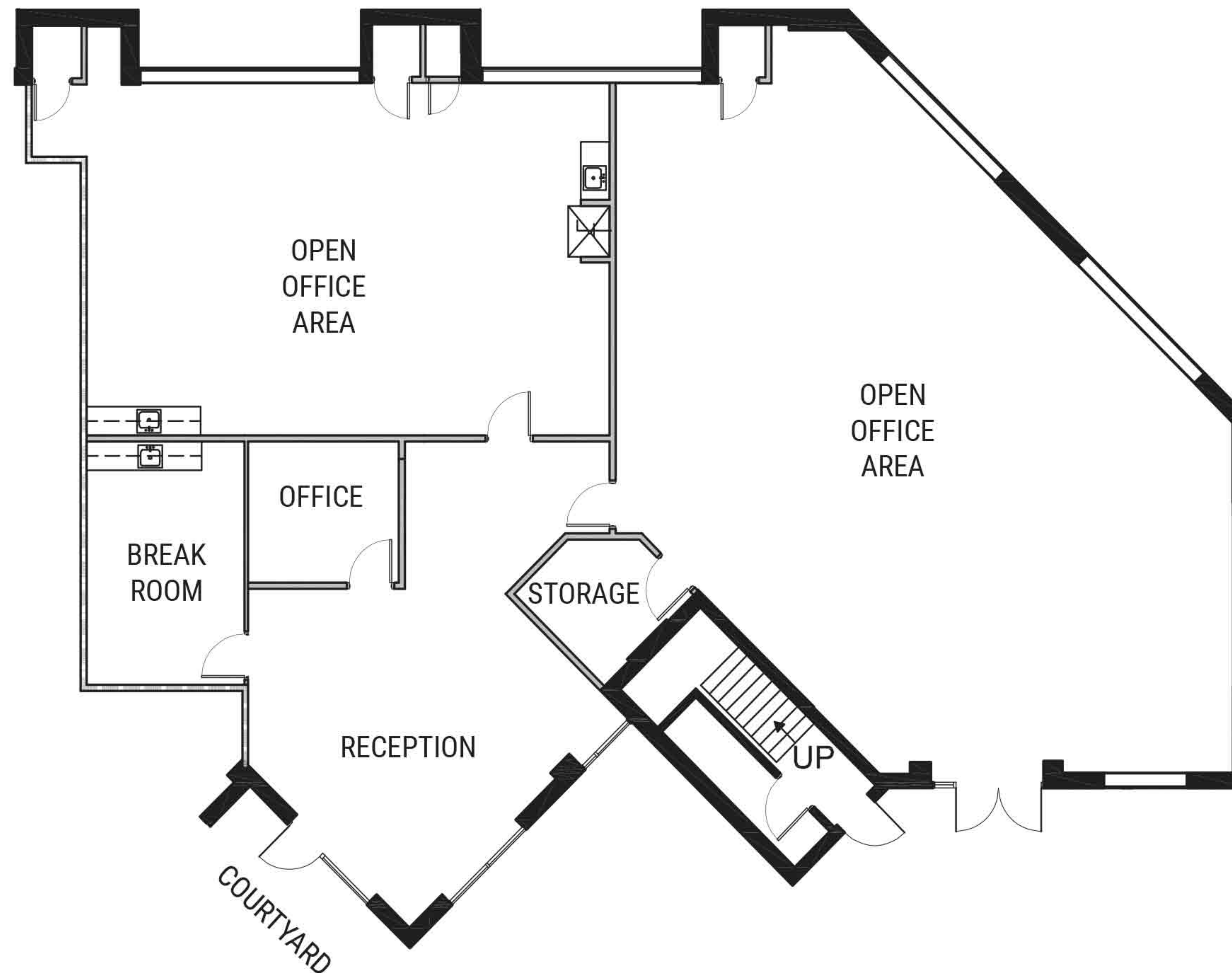
FLAMINGO PROFESSIONAL CENTER

2080 & 2090 E. FLAMINGO RD. | LAS VEGAS NV 89119

AVAILABLE FOR LEASE

2080 - SUITE 115

4,137 RSF±



JARED BONNELL

JARED@ONECLV.COM

(702) 630-8016

B.1001717



FLAMINGO PROFESSIONAL CENTER

2080 & 2090 E. FLAMINGO RD. | LAS VEGAS NV 89119

2080 | SECOND FLOOR



AVAILABLE SUITES

JARED BONNELL

JARED@ONECLV.COM

(702) 630-8016

B.1001717



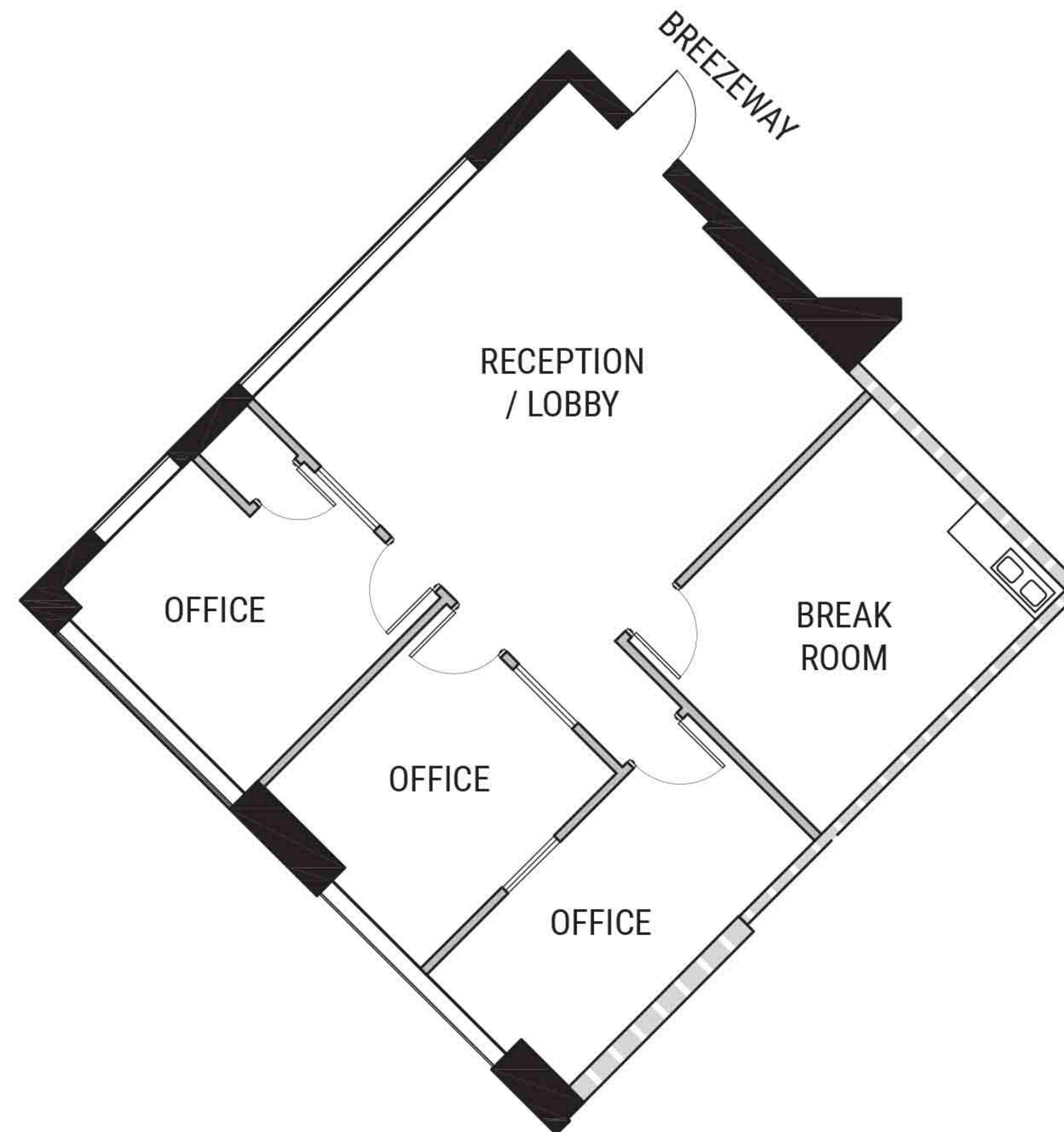
FLAMINGO PROFESSIONAL CENTER

2080 & 2090 E. FLAMINGO RD. | LAS VEGAS NV 89119

AVAILABLE FOR LEASE

2080 - SUITE 217

1,487 RSF±



JARED BONNELL

JARED@ONECLV.COM

(702) 630-8016

B.1001717



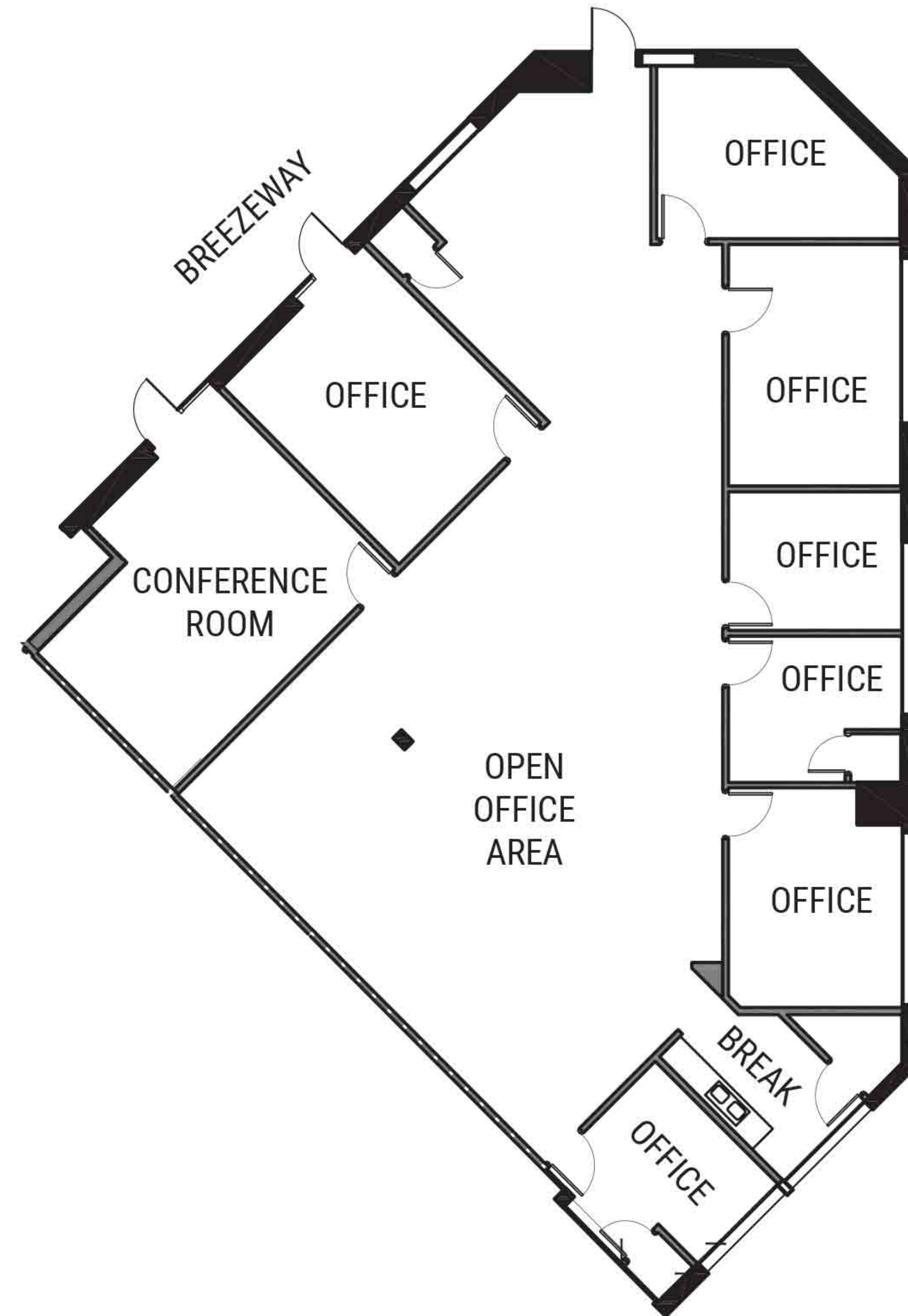
FLAMINGO PROFESSIONAL CENTER

2080 & 2090 E. FLAMINGO RD. | LAS VEGAS NV 89119

AVAILABLE FOR LEASE

2080 - SUITE 223

3,774 RSF±



JARED BONNELL

JARED@ONECLV.COM

(702) 630-8016

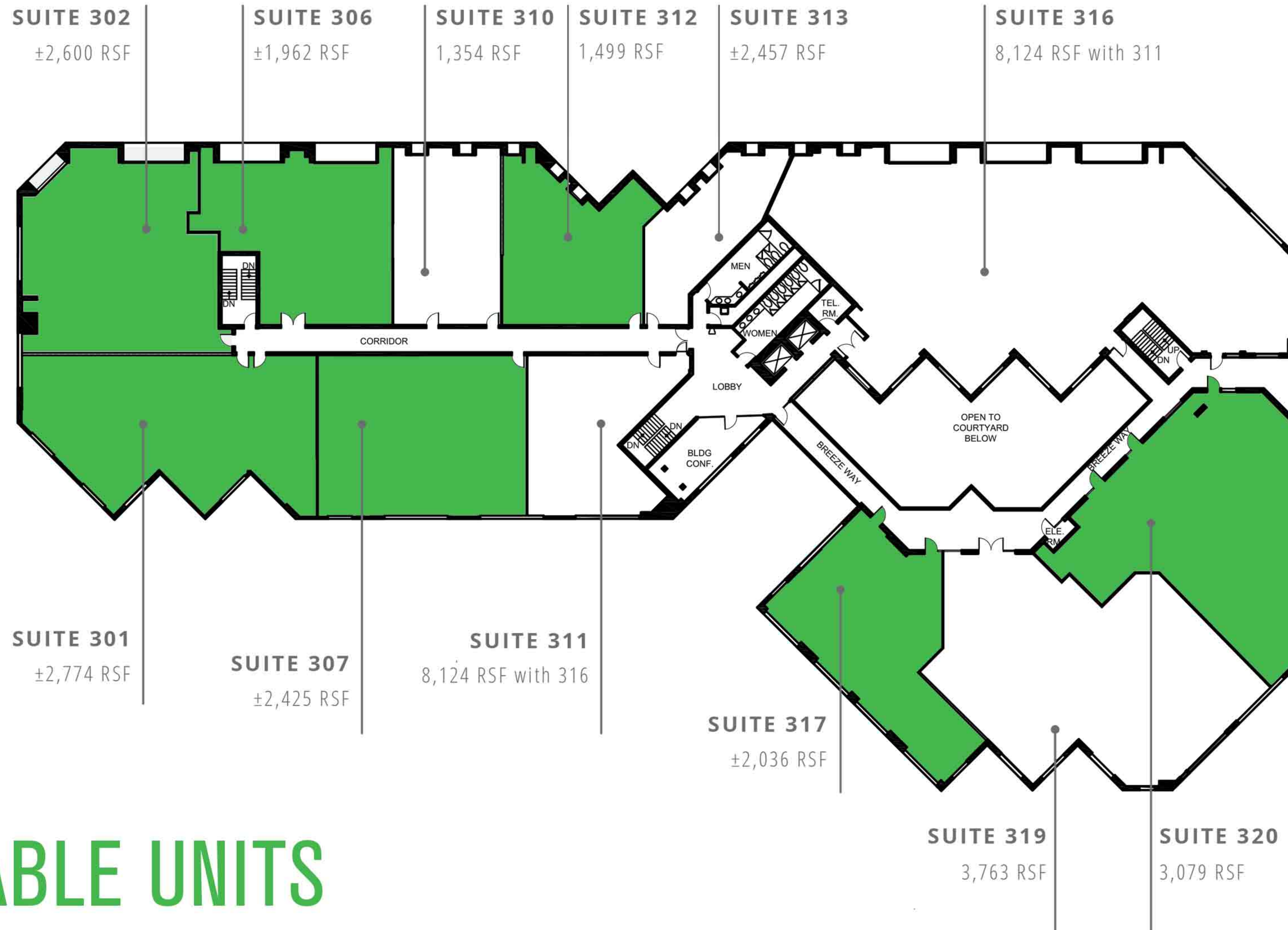
B.1001717



FLAMINGO PROFESSIONAL CENTER

2080 & 2090 E. FLAMINGO RD. | LAS VEGAS NV 89119

2080 | THIRD FLOOR



AVAILABLE UNITS

JARED BONNELL
JARED@ONECLV.COM
(702) 630-8016
B.1001717

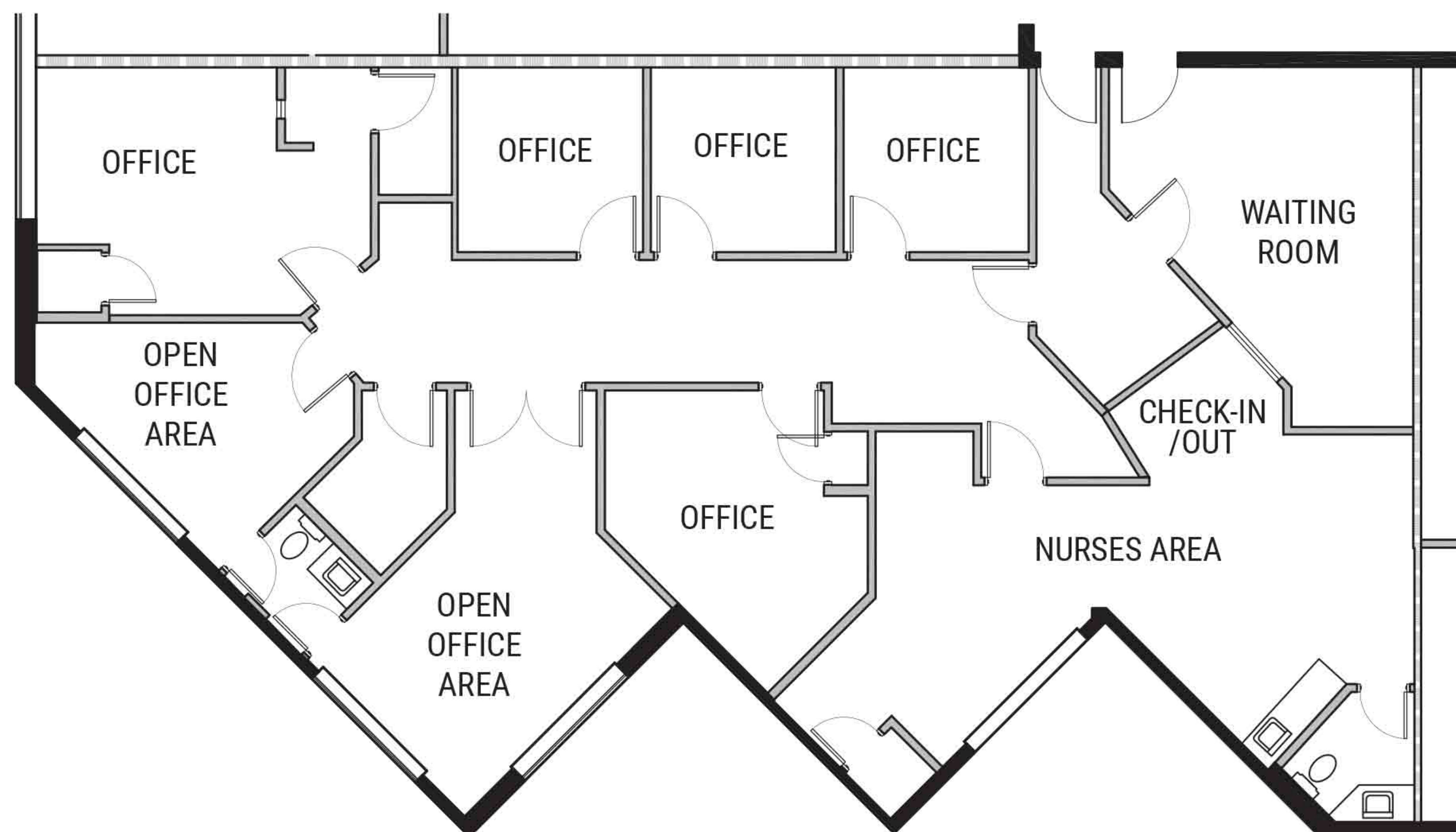


FLAMINGO PROFESSIONAL CENTER

2080 & 2090 E. FLAMINGO RD. | LAS VEGAS NV 89119

AVAILABLE FOR LEASE

2080 - SUITE 301
MEDICAL OFFICE
2,774 RSF ±



JARED BONNELL

JARED@ONECLV.COM

(702) 630-8016

B.1001717



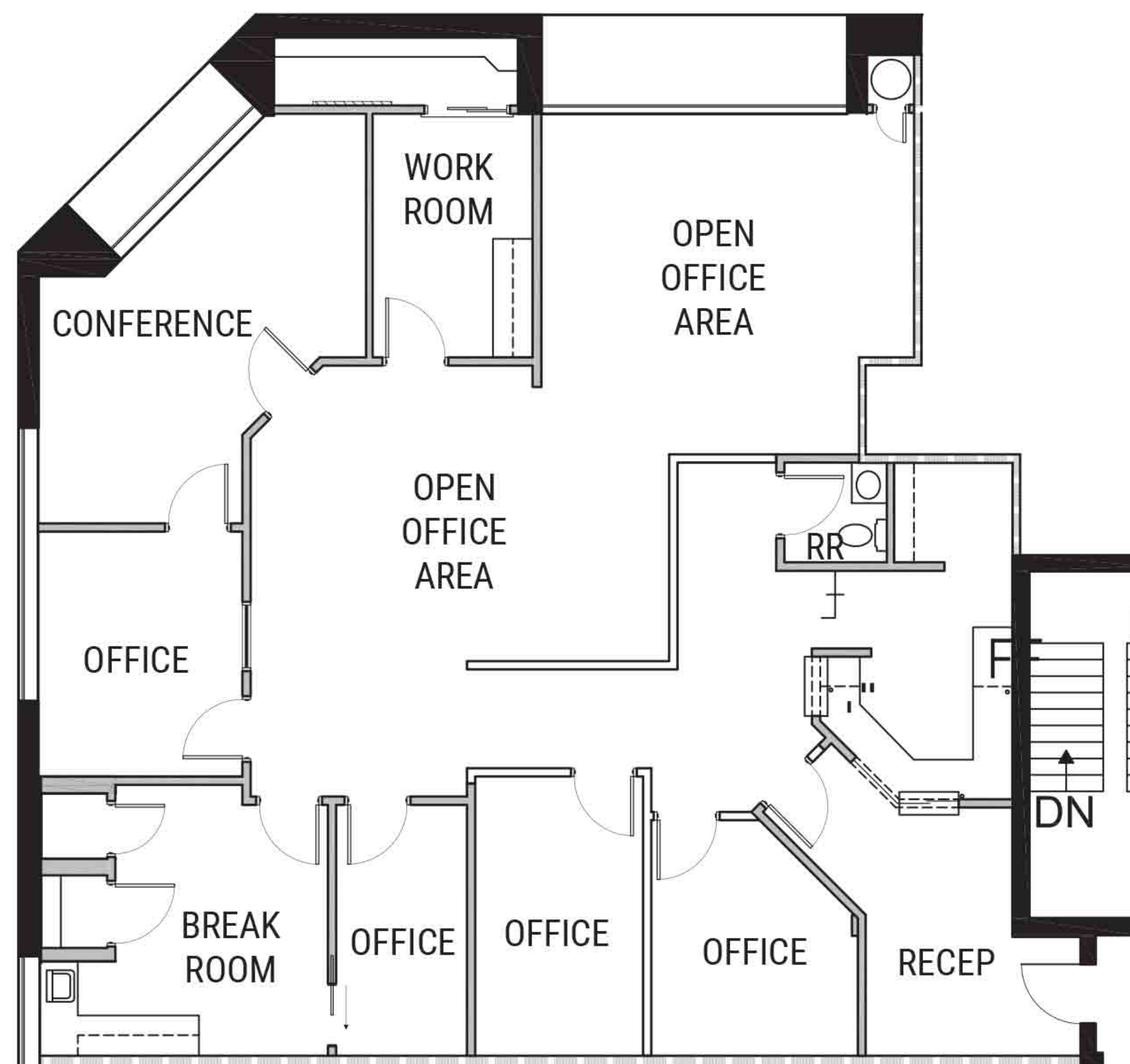
FLAMINGO PROFESSIONAL CENTER

2080 & 2090 E. FLAMINGO RD. | LAS VEGAS NV 89119

AVAILABLE FOR LEASE

2080 - SUITE 302

2,600 RSF±



JARED BONNELL

JARED@ONECLV.COM

(702) 630-8016

B.1001717



FLAMINGO PROFESSIONAL CENTER

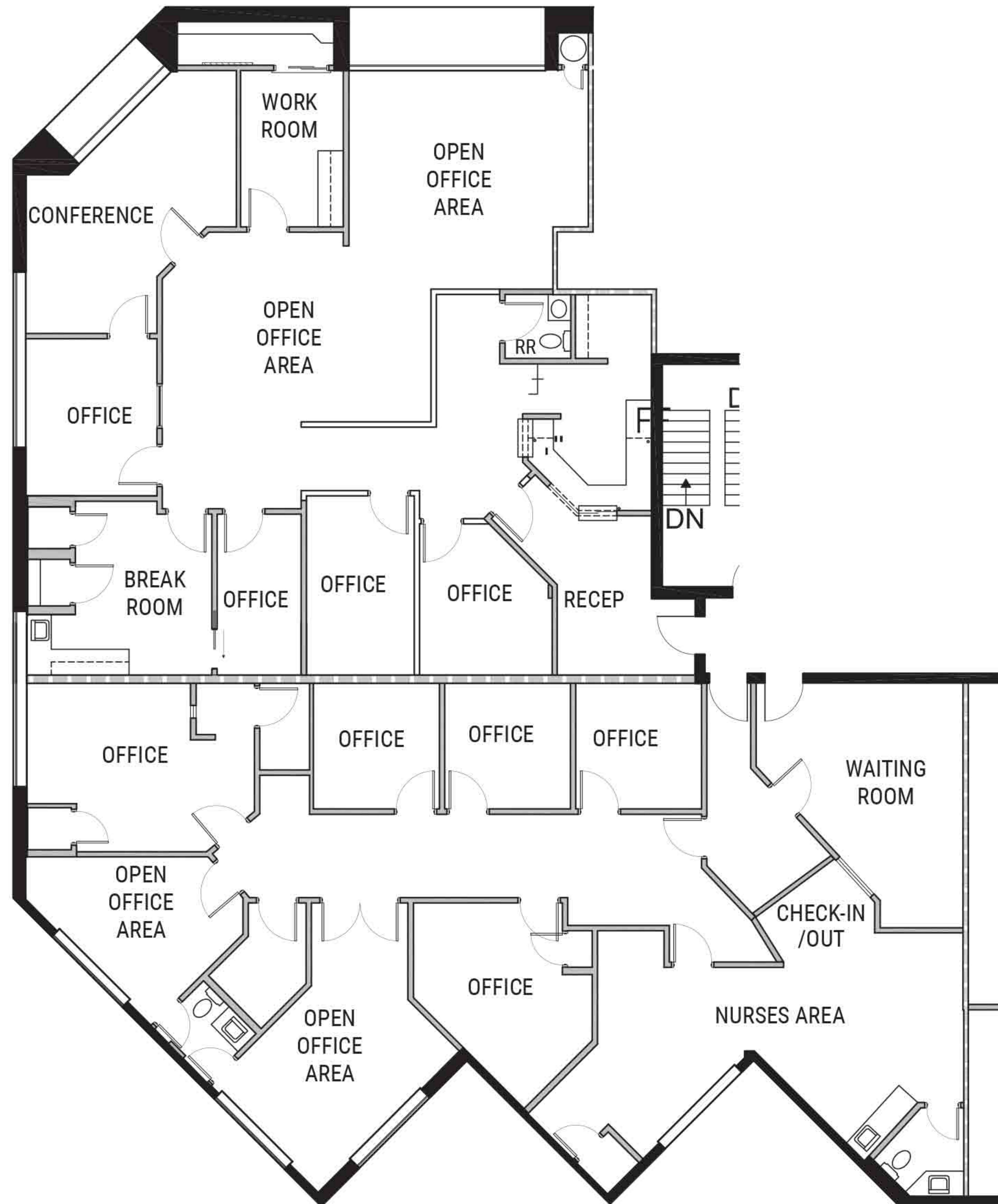
2080 & 2090 E. FLAMINGO RD. | LAS VEGAS NV 89119

AVAILABLE FOR LEASE

2080 - SUITE 301 + 302

OFFICE & MEDICAL

5,374 RSF ±



JARED BONNELL

JARED@ONECLV.COM

(702) 630-8016

B.1001717



FLAMINGO PROFESSIONAL CENTER

2080 & 2090 E. FLAMINGO RD. | LAS VEGAS NV 89119

AVAILABLE FOR LEASE

2080 - SUITE 306

1,962 RSF±

SPEC SUITE - \$1.70/SF FSG



JARED BONNELL

JARED@ONECLV.COM

(702) 630-8016

B.1001717



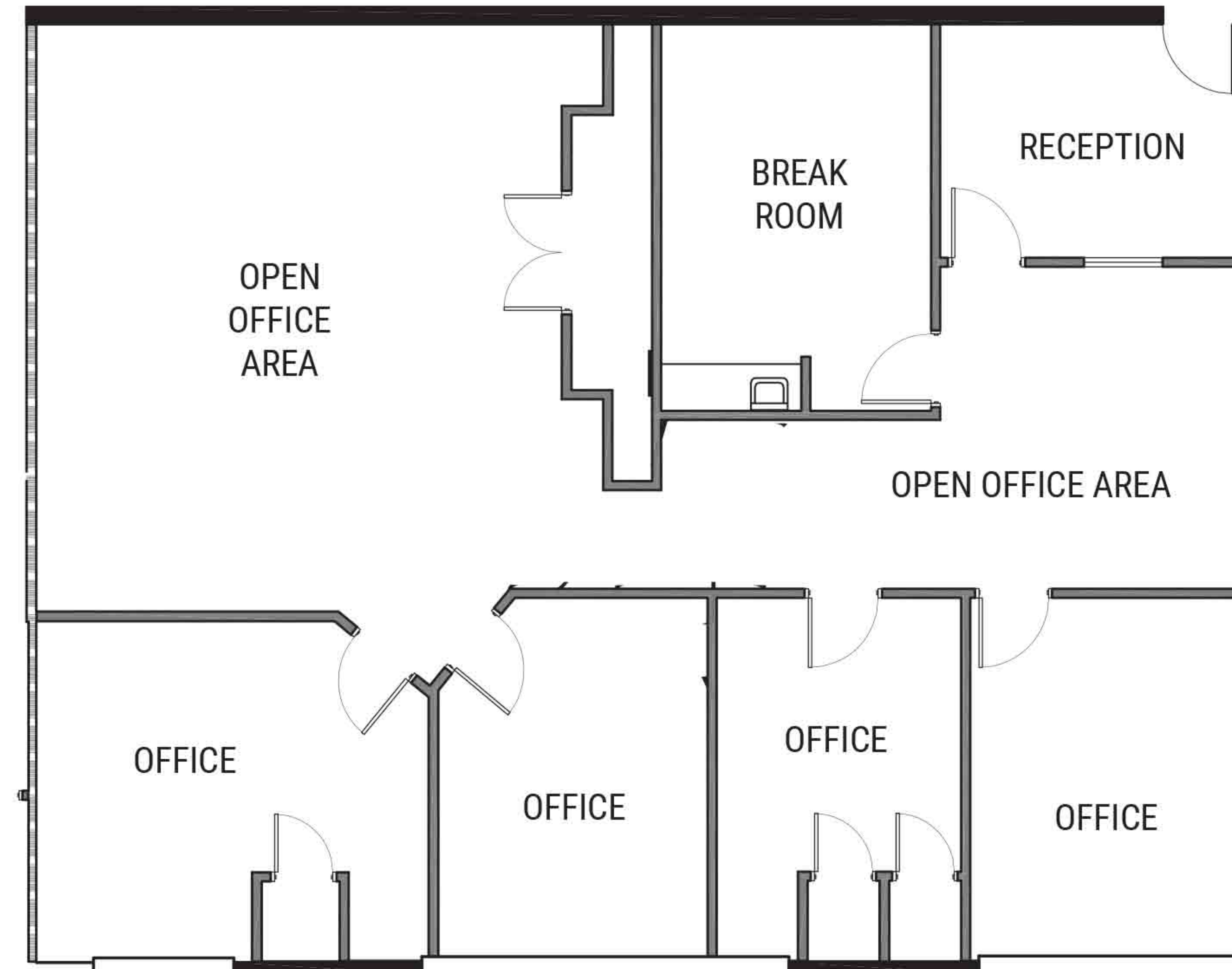
FLAMINGO PROFESSIONAL CENTER

2080 & 2090 E. FLAMINGO RD. | LAS VEGAS NV 89119

AVAILABLE FOR LEASE

2080 - SUITE 307

2,425 RSF±



JARED BONNELL

JARED@ONECLV.COM

(702) 630-8016

B.1001717



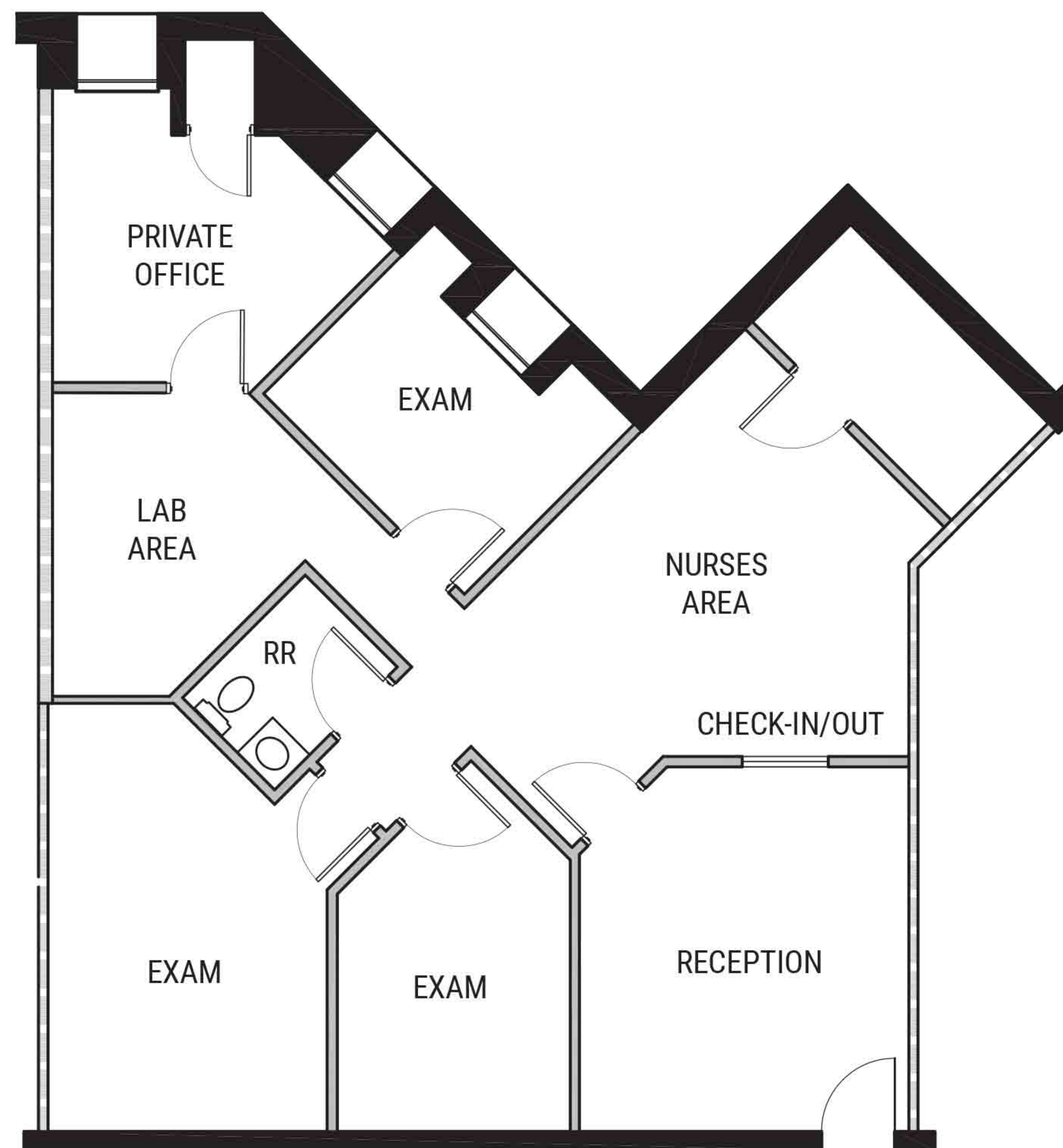
FLAMINGO PROFESSIONAL CENTER

2080 & 2090 E. FLAMINGO RD. | LAS VEGAS NV 89119

AVAILABLE FOR LEASE

2080 - SUITE 312

1,499 RSF±



JARED BONNELL

JARED@ONECLV.COM

(702) 630-8016

B.1001717



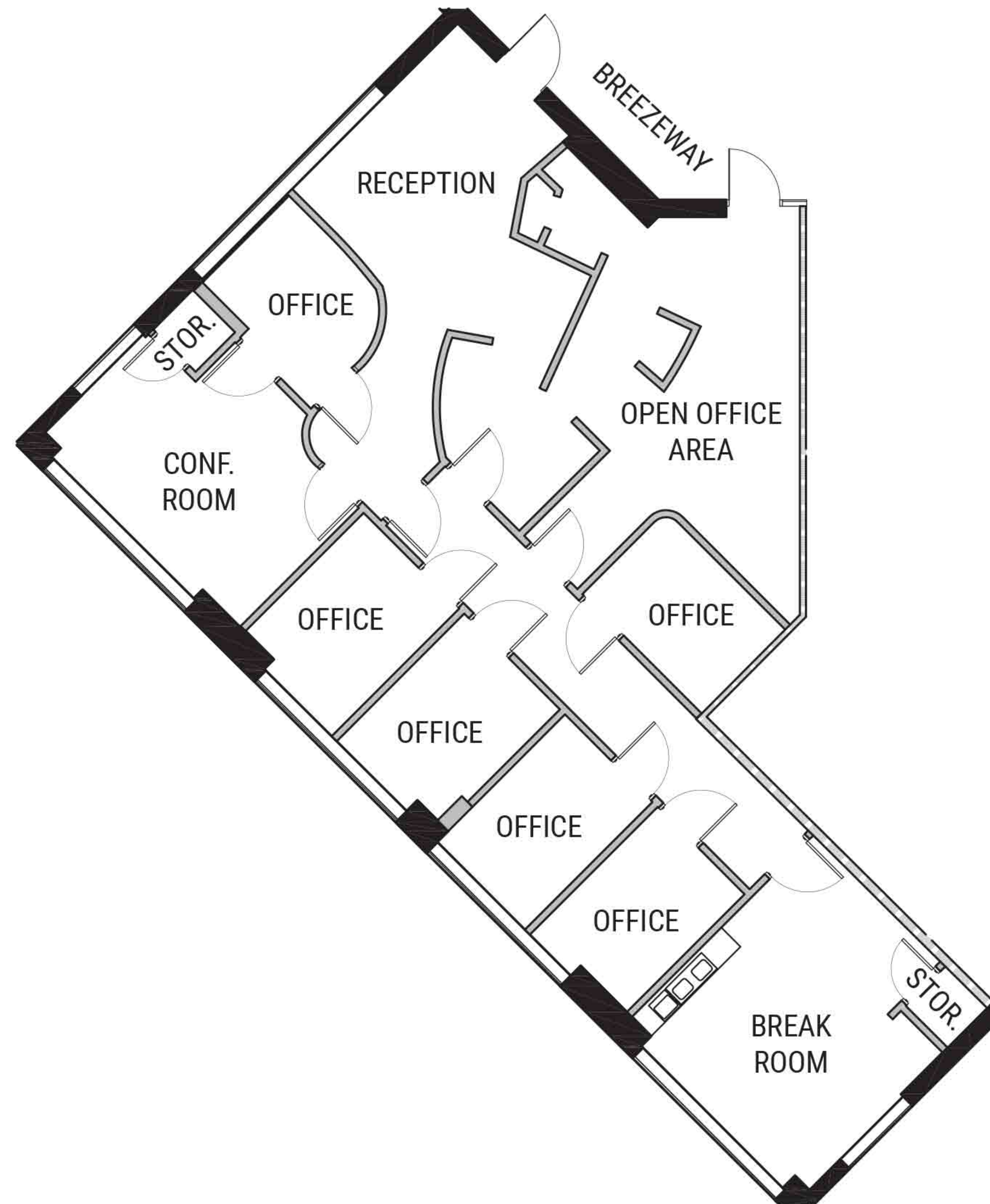
FLAMINGO PROFESSIONAL CENTER

2080 & 2090 E. FLAMINGO RD. | LAS VEGAS NV 89119

AVAILABLE FOR LEASE

2080 - SUITE 317

2,036 RSF ±



JARED BONNELL

JARED@ONECLV.COM

(702) 630-8016

B.1001717



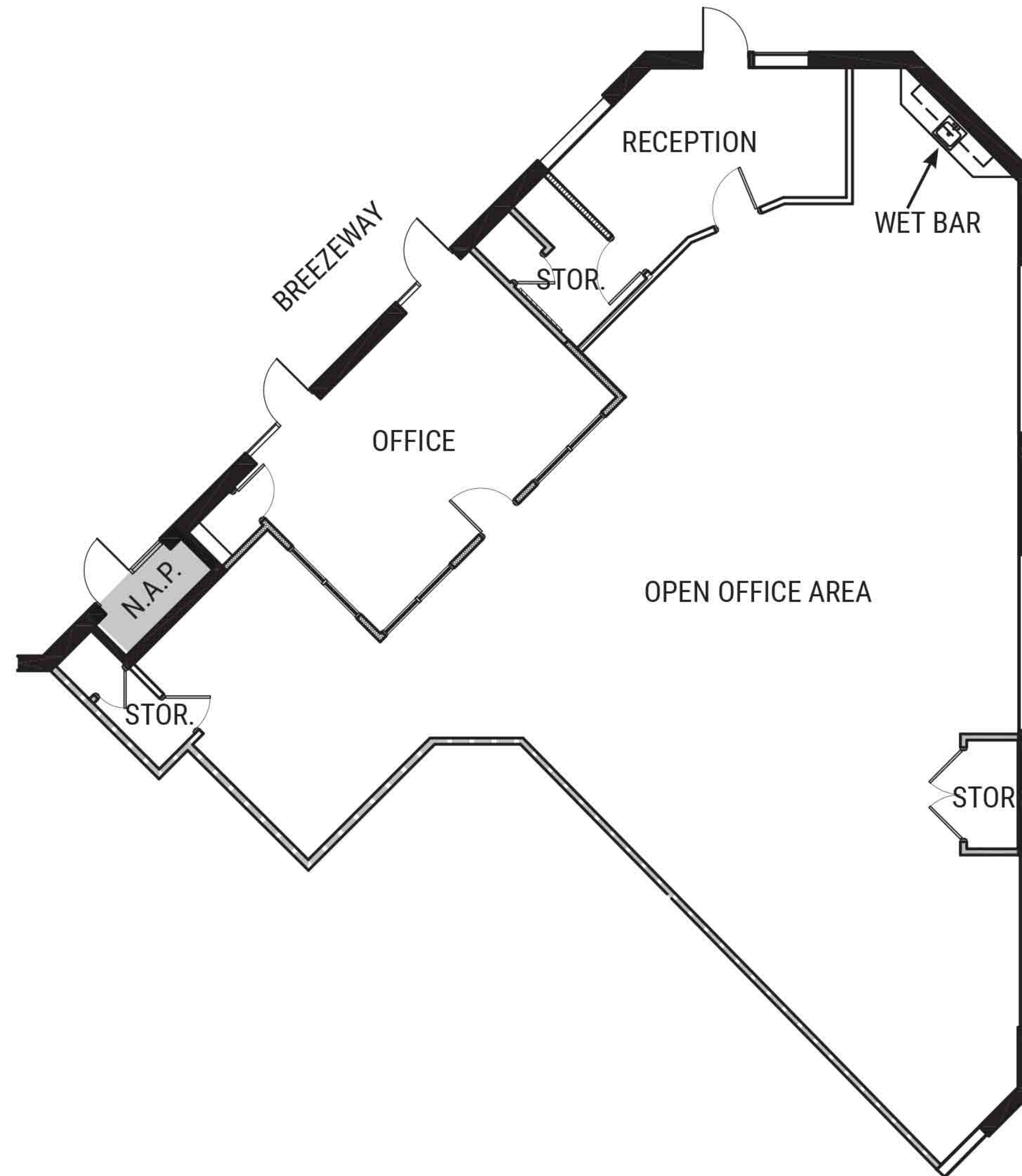
FLAMINGO PROFESSIONAL CENTER

2080 & 2090 E. FLAMINGO RD. | LAS VEGAS NV 89119

AVAILABLE FOR LEASE

2080 - SUITE 320

3,079 RSF ±



JARED BONNELL

JARED@ONECLV.COM

(702) 630-8016

B.1001717



FLAMINGO PROFESSIONAL CENTER

2080 & 2090 E. FLAMINGO RD. | LAS VEGAS NV 89119



JARED BONNELL

JARED@ONECLV.COM

(702) 630-8016

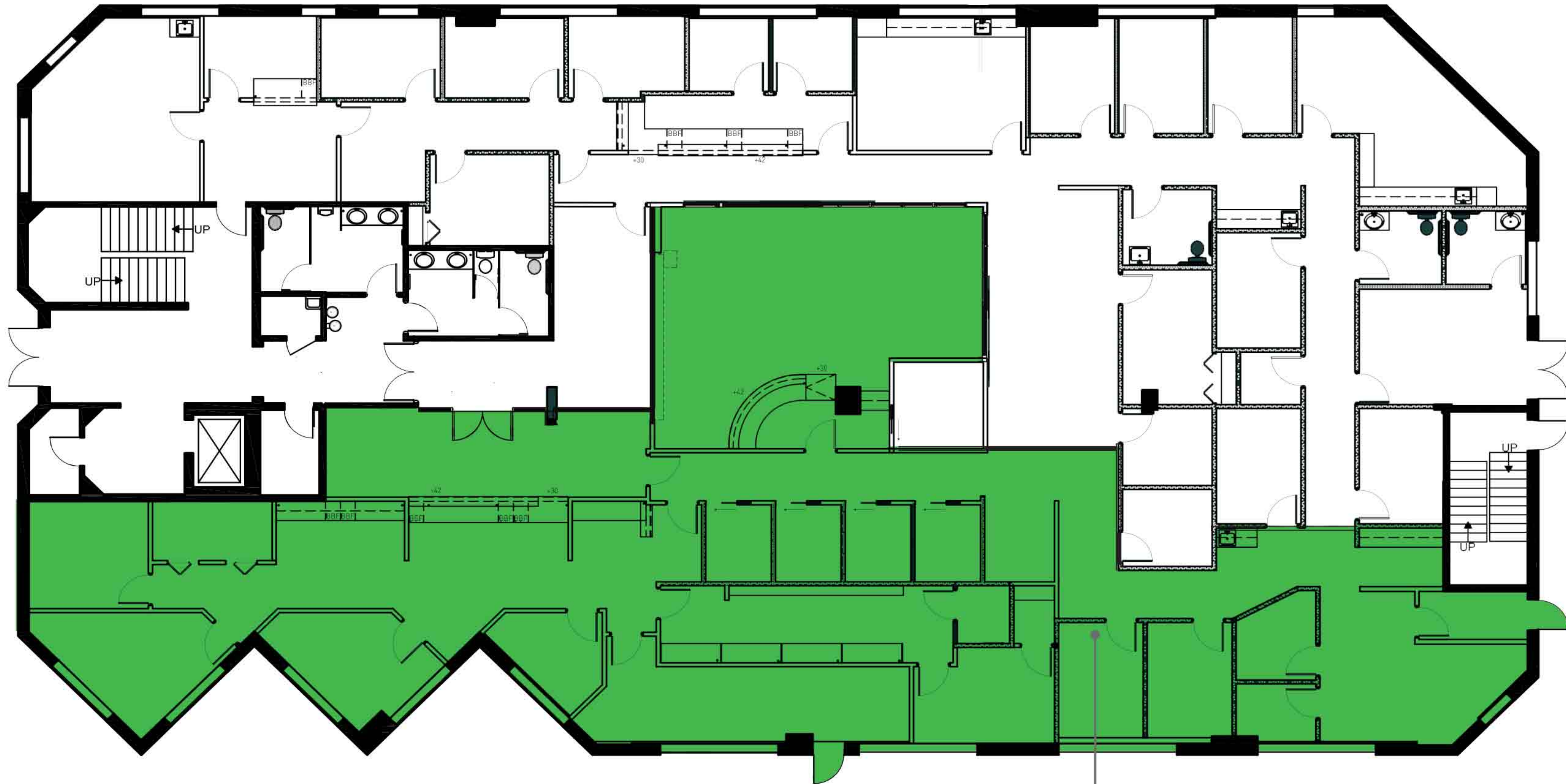
B.1001717



FLAMINGO PROFESSIONAL CENTER

2080 & 2090 E. FLAMINGO RD. | LAS VEGAS NV 89119

2090 | FIRST FLOOR



AVAILABLE SUITES

SUITE 301
±5,061 RSF

JARED BONNELL
JARED@ONECLV.COM
(702) 630-8016
B.1001717



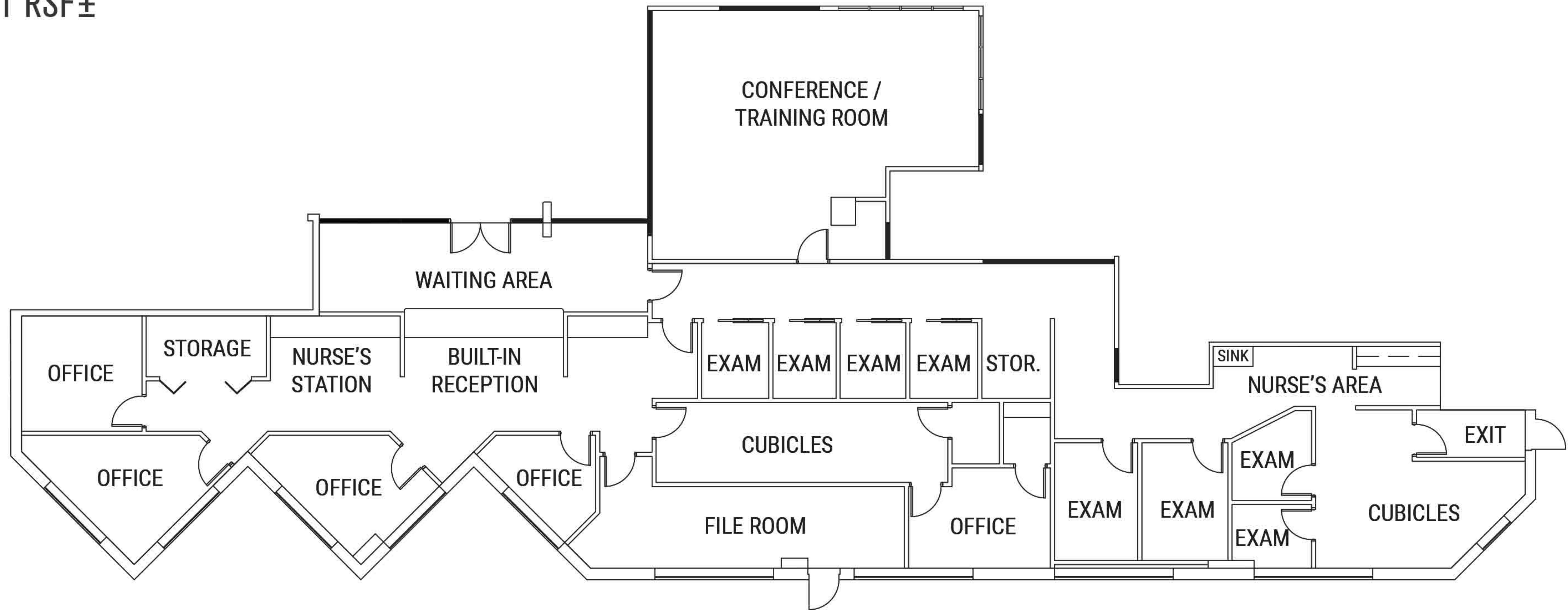
FLAMINGO PROFESSIONAL CENTER

2080 & 2090 E. FLAMINGO RD. | LAS VEGAS NV 89119

AVAILABLE FOR LEASE

2090 - SUITE 103

5,061 RSF±



JARED BONNELL

JARED@ONECLV.COM

(702) 630-8016

B.1001717



FLAMINGO PROFESSIONAL CENTER

2080 & 2090 E. FLAMINGO RD. | LAS VEGAS NV 89119



JARED BONNELL
JARED@ONECLV.COM
(702) 630-8016
B.1001717



Jared Bonnell
(702)-630-8016
B.1001717

Email
Jared@oneclv.com



View Our Website
<http://www.oneclv.com>