

# FOR SALE

## GREENBRIER INDUSTRIAL WITH FENCED YARD

912 Executive Court, Chesapeake, VA



### ABOUT PROPERTY

- 11,500 SF
  - 2,100 SF of office
  - 9,400 SF of warehouse
- 1 Dock Door with Well 12'x14'
- 3 Grade-Level Doors 10'x12'
- 16' - 19' Clear Ceiling Height
- 19' x 36' Column Spacing
- Fenced Rear Yard
- (3) 200 amp, 240 volt electric panels
- Zoned PUD (Planned Unit Development)
- Asking Price: \$2,130,000



For more information:  
**BOBBY BEASLEY, III, SIOR**

757.640.8241

[BobbyBeasley3@HarveyLindsay.com](mailto:BobbyBeasley3@HarveyLindsay.com)

**HARVEY LINDSAY**  
COMMERCIAL REAL ESTATE

[www.harveylindsay.com](http://www.harveylindsay.com)



# PHOTOS



CONFERENCE ROOM



KITCHEN



WAREHOUSE

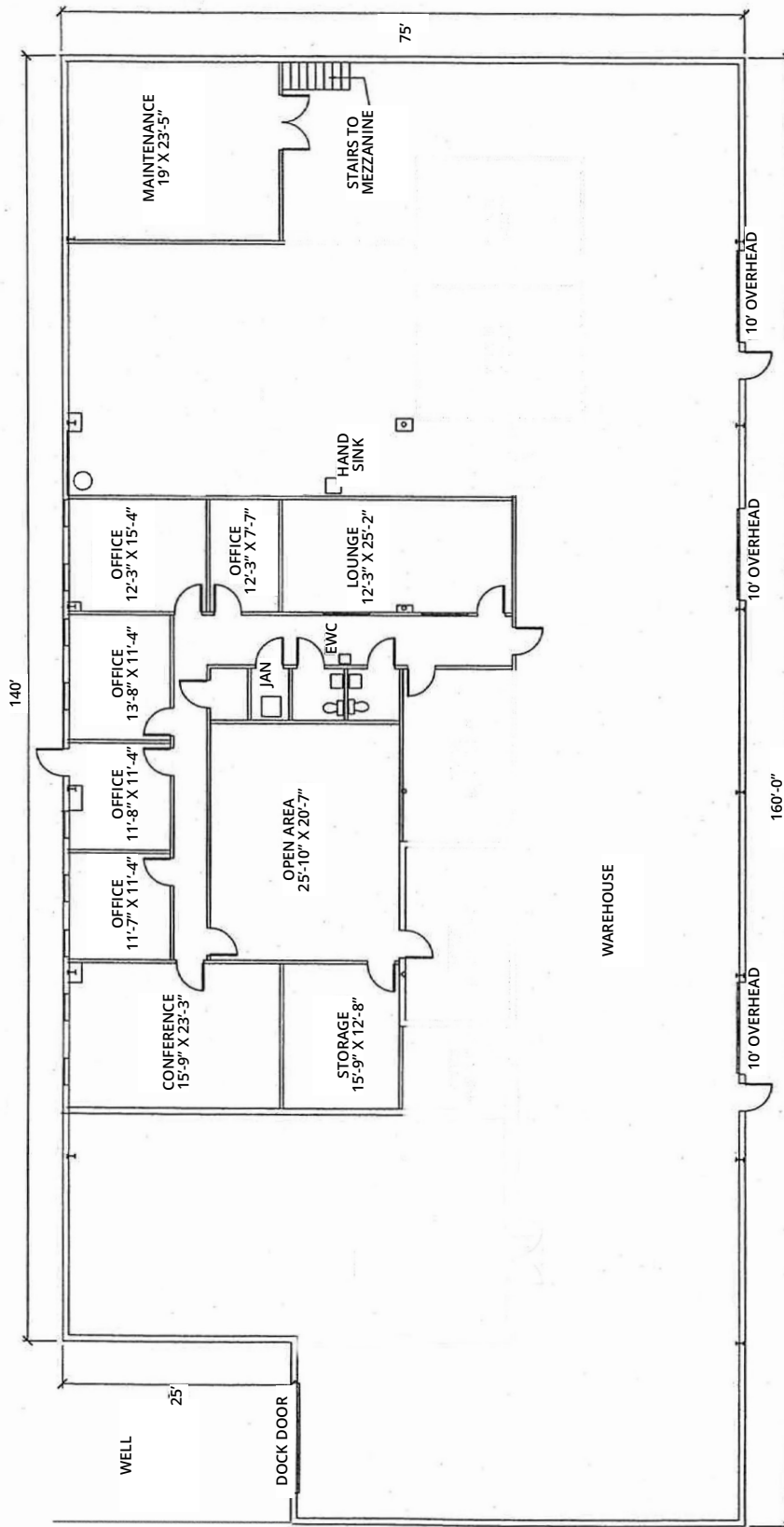


LOADING DOCK

For more information:  
**BOBBY BEASLEY, III, SIOR**  
757.640.8241  
[BobbyBeasley3@HarveyLindsay.com](mailto:BobbyBeasley3@HarveyLindsay.com)

**HARVEY LINDSAY**  
COMMERCIAL REAL ESTATE

[www.harveylindsay.com](http://www.harveylindsay.com)



For more information:  
**BOBBY BEASLEY, III, SIOR**

757.640.8241

BobbyBeasley3@HarveyLindsay.com

**HARVEY LINDSAY**  
COMMERCIAL REAL ESTATE

[www.harveylindsay.com](http://www.harveylindsay.com)



# LOCATION MAP



For more information:  
**BOBBY BEASLEY, III, SIOR**  
757.640.8241  
[BobbyBeasley3@HarveyLindsay.com](mailto:BobbyBeasley3@HarveyLindsay.com)

**HARVEY LINDSAY**  
COMMERCIAL REAL ESTATE

[www.harveylindsay.com](http://www.harveylindsay.com)