

Dental Space

430 W Stephenson Freeport, IL FOR SALE

Discover a rare opportunity to own a fully built-out, free-standing oral surgery office in the heart of Freeport. This well-maintained property offers a functional medical layout ideal for oral surgery, dental, or other healthcare uses. Situated along West Stephenson Street with excellent visibility and convenient parking, the building provides a turnkey solution for a medical professional or investor seeking a high-quality asset in a strong regional market.



Sale Price:
\$350,000

Available SF:
1554 SF SF

Parking Spaces:
-

Building Size:
1,554 SF

Lease Term:
Negotiable

DAVE GRAMMAS | 630.353.1190 | DGRAMMAS@JROSSIANDASSOCIATES.COM
WILLIAM PARK | 630.353.1190 | WILLIAM@JROSSIANDASSOCIATES.COM



REAL ESTATE &
PRACTICE ADVISORY

Dental Office

Freeport, IL

DEMOGRAPHICS MAP AND REPORT

Population

0.3 MILES

1,564

TOTAL POPULATION

4,159 | 9,843
0.5 MILES | 1 MILE

36

AVERAGE AGE

37 | 39
0.5 MILES | 1 MILE

Households and Income

0.3 MILES

674

TOTAL HOUSEHOLDS

1,828 | 4,297
0.5 MILES | 1 MILE

2.3

OF PERSONS PER HH

2.3 | 2.3
0.5 MILES | 1 MILE

0.3 Miles

36

AVERAGE AGE (MALE)

37 | 38
0.5 MILES | 1 MILE

37

AVERAGE AGE (FEMALE)

37 | 39
0.5 MILES | 1 MILE

0.3 Miles

\$53,635

AVERAGE HH INCOME

\$54,560 | \$56,064
0.5 MILES | 1 MILE

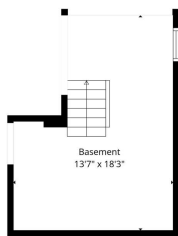
\$97,354

AVERAGE HOUSE VALUE

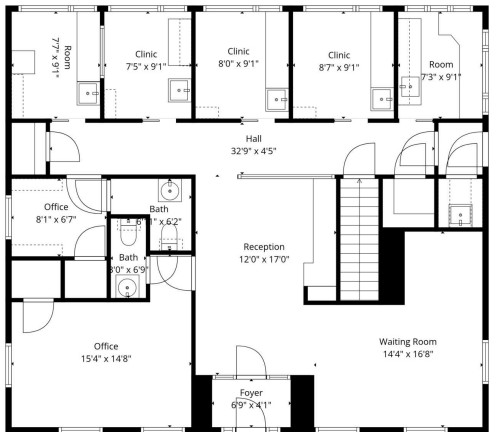
\$95,212 | \$85,435
0.5 MILES | 1 MILE

* Demographic data derived from 2020 ACS - US Census





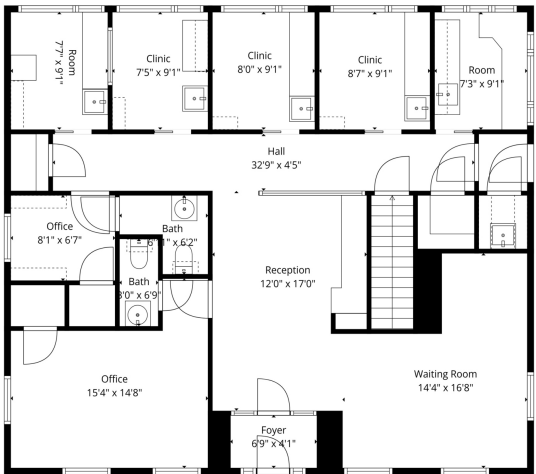
Floor 1



Floor 2

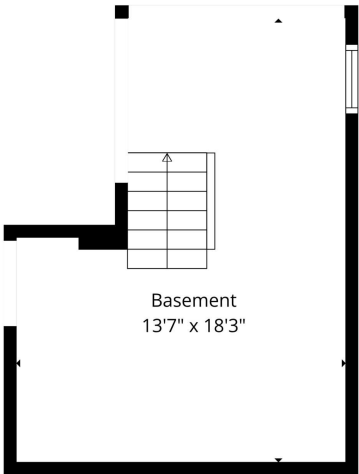
TOTAL: 1419 sq. ft.
BELOW GRADE: 0 sq. ft. FLOOR 2: 1419 sq. ft.
EXCLUDED AREAS: BASEMENT: 208 sq. ft., WALLS: 110 sq. ft.

Floor Plan Created By CalAccess App. Measurements Downloaded Digitally. Not Guaranteed.



TOTAL: 1419 sq. ft.
BELOW GRADE: 0 sq. ft. FLOOR 2: 1419 sq. ft.
EXCLUDED AREAS: BASEMENT: 208 sq. ft., WALLS: 110 sq. ft.

Floor Plan Created By CalAccess App. Measurements Downloaded Digitally. Not Guaranteed.



TOTAL: 1419 sq. ft.
BELOW GRADE: 0 sq. ft. FLOOR 2: 1419 sq. ft.
EXCLUDED AREAS: BASEMENT: 208 sq. ft., WALLS: 110 sq. ft.

Floor Plan Created By CalAccess App. Measurements Downloaded Digitally. Not Guaranteed.

Dental Office

Freeport, IL

ADDITIONAL PHOTOS



Dental Office

Freeport, IL

RETAILER MAP

