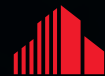


DAHLGREN DATA PARK

8000 James Madison Parkway | King George, Virginia

482.71 ACRES

STRATEGICALLY SITUATED FOR DATA CENTER DEVELOPMENT



CUSHMAN &
WAKEFIELD

THALHIMER

DAHLGREN DATA PARK

SITE OVERVIEW

SITE SIZE

- 482.71 acres

UTILITIES

- Power Lines: 230 kV

FIBER

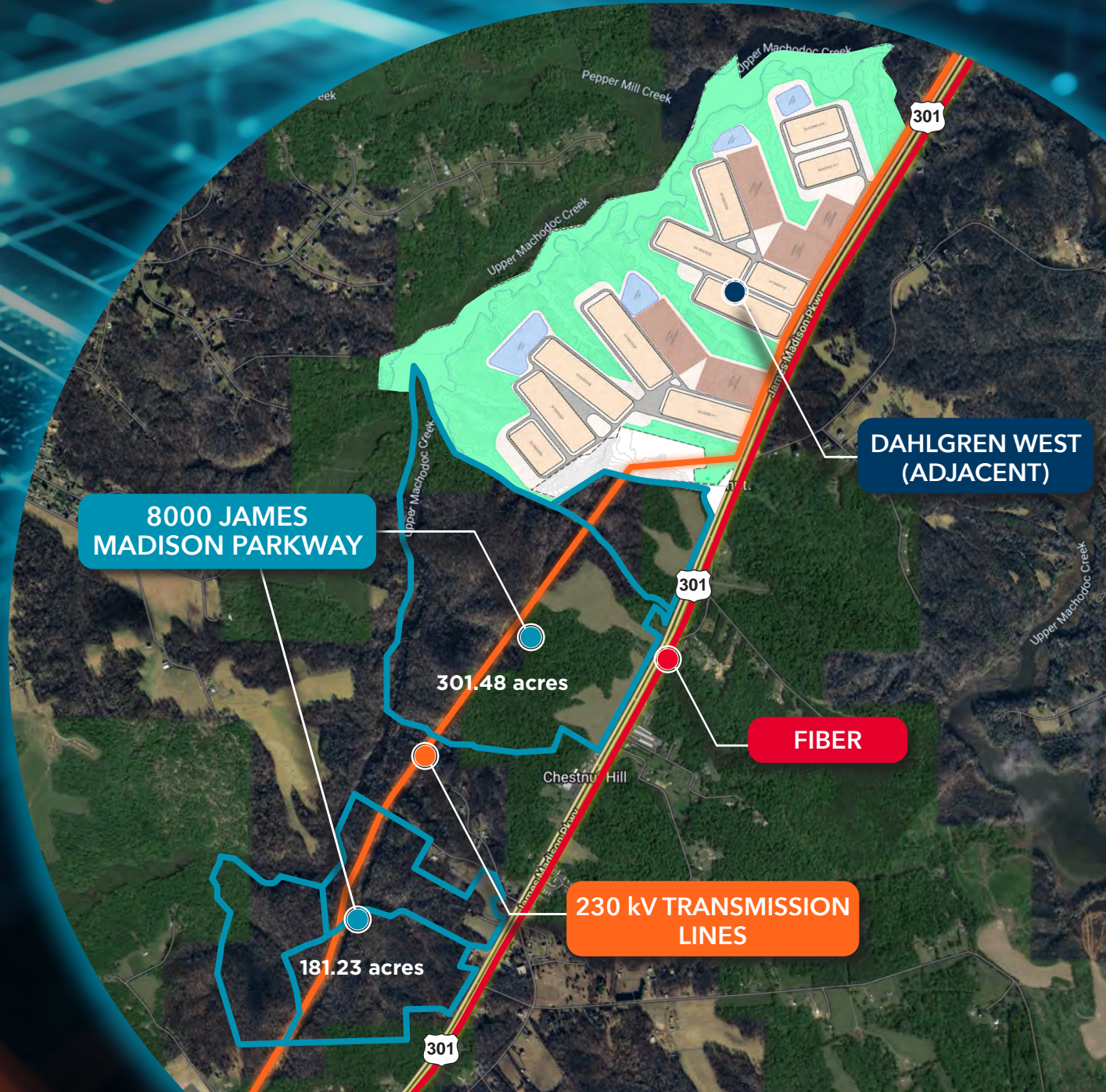
- Level 3
- LIT
- Atlantic Broadband
- Zayo

ZONING

- Zoning: A2

TAXES

- \$1.25 / \$100
- Depreciation:
 - » Year 1 = 50%
 - » Year 2 = 35%
 - » Year 3 = 20%
 - » Year 4 = 10%
 - » Year 5 = 5%



REGIONAL DATA DEVELOPMENT



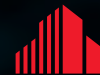
FOR MORE INFORMATION, CONTACT

JAMIE SCULLY
CCIM

Senior Vice President
540 322 4140
jamie.scully@thalhimer.com

WILSON GREENLAW
CCIM, SIOR

First Vice President
540 322 4156
wilson.greenlaw@thalhimer.com



**CUSHMAN &
WAKEFIELD**

THALHIMER

Cushman & Wakefield | Thalhimer © 2024. No warranty or representation, express or implied, is made to the accuracy or completeness of the information contained herein, and same is submitted subject to errors, omissions, change of price, rental or other conditions, withdrawal without notice, and to any special listing conditions imposed by the property owner(s). As applicable, we make no representation as to the condition of the property (or properties) in question.