

LOVES PARK CORPORATE CENTER

I-90/I-39 Frontage - Just North of East Riverside Blvd.

Loves Park, Illinois

Property Highlights

- + 5-33.3 Acres available, shovel ready sites
- + Build-to-Suit - 50,000 SF to 350,000 SF
- + Located in a well-know 100+ acre business park - Loves Park Corporate Center
- + Strong labor market
- + Excellent access, only 1/2 mile north of I-90 four-way interchange at Riverside Blvd.
- + Under 15 miles to Chicago Rockford International Airport with US Customs Port of Entry and 2nd largest UPS hub in the US
- + Easy drive to Chicago's O'Hare International Airport and Union Pacific Global III Intermodal Facility
- + Located in a TIF District and Enterprise Zone
- + Low Loves Park Real Estate Taxes
- + Sites also available for sale

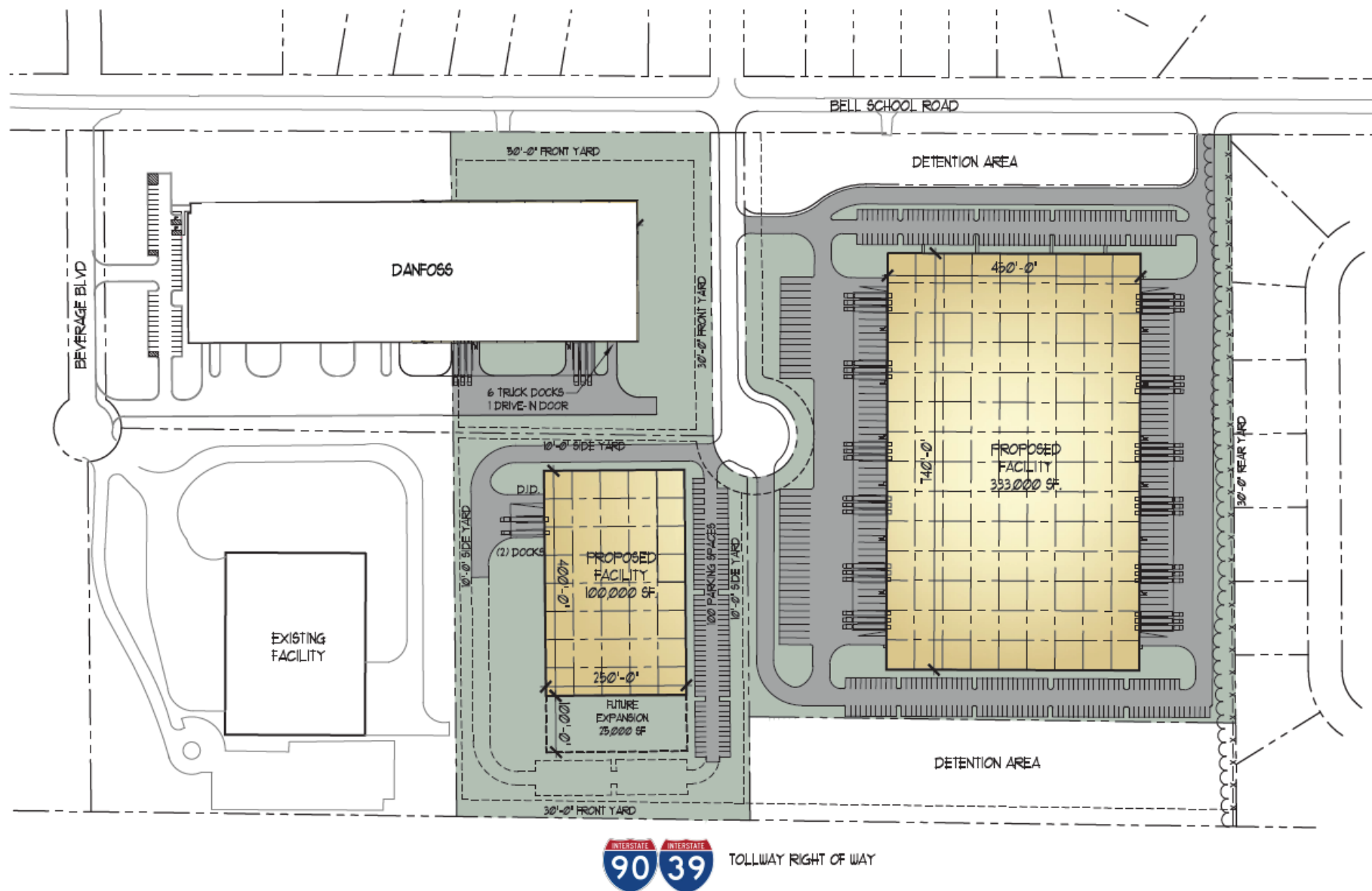


5-33.3 Acres

Loves Park Corporate Center

For Sale

Conceptual Site Plan

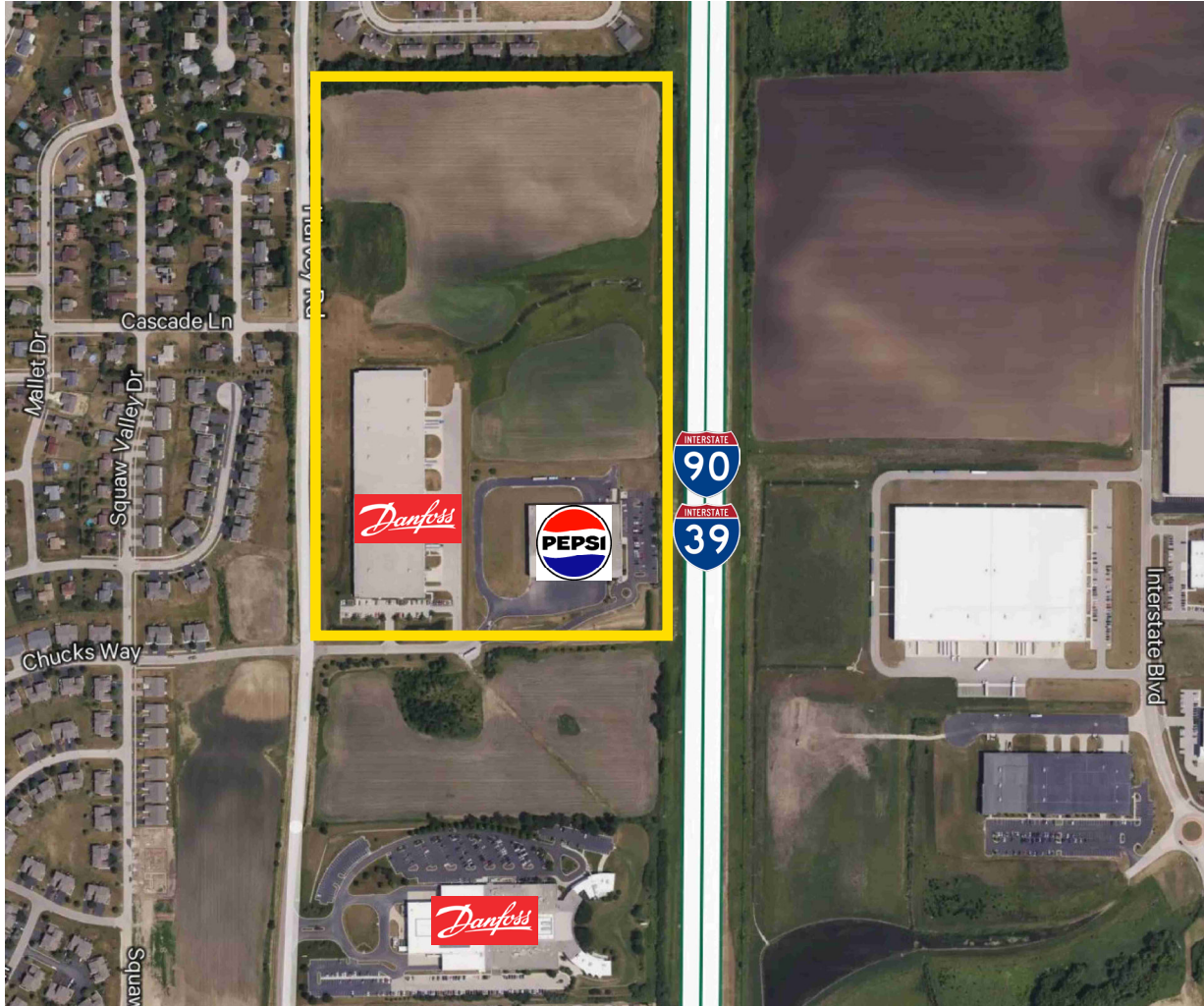


5-33.3 Acres

Loves Park Corporate Center

For Sale

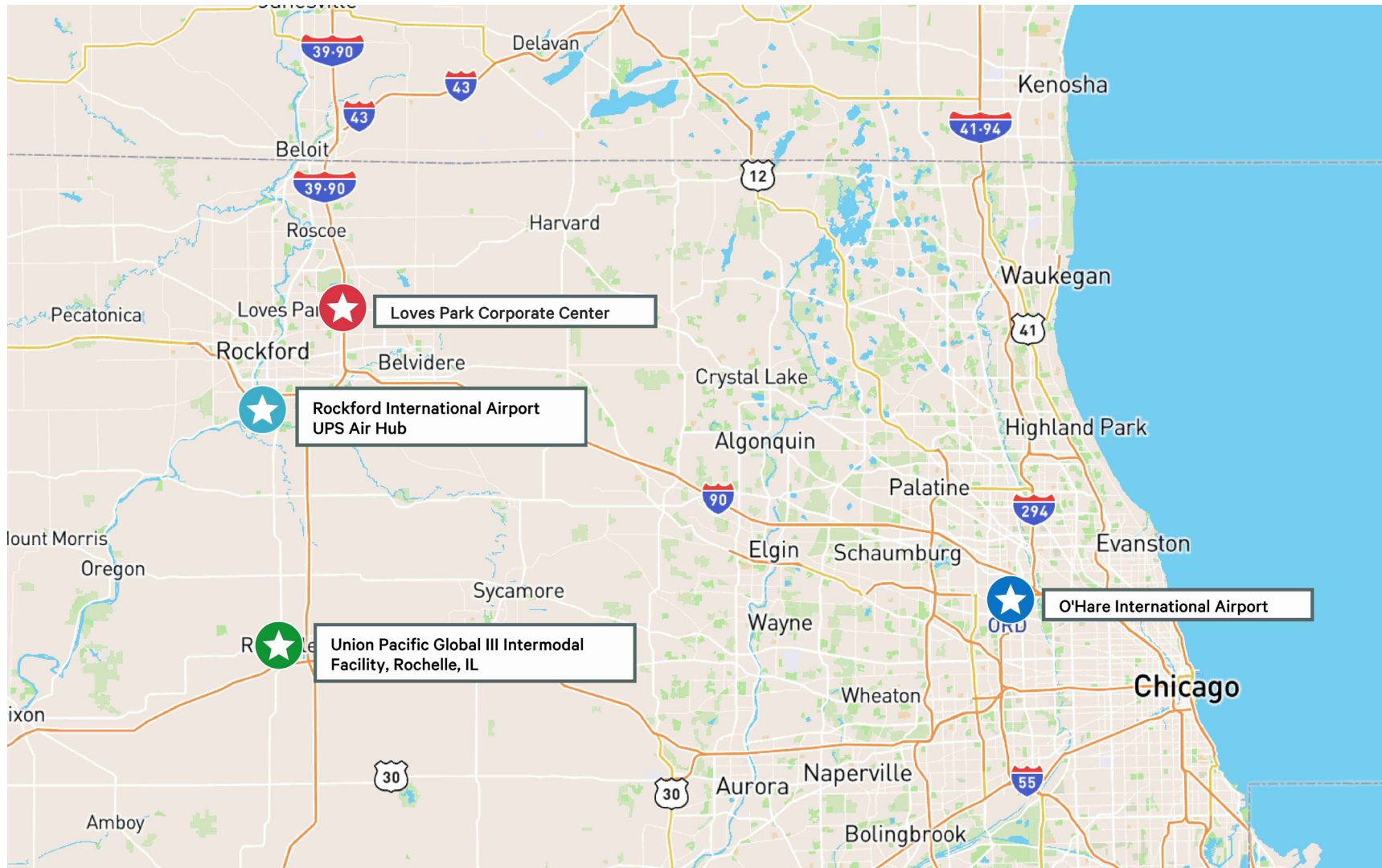
Build-to-Suits up to 350,000 SF



5-33.3 Acres

Loves Park Corporate Center

For Sale



Contact:

Karen Walsh

Senior Vice President

815 218 3438

karen.walsh@cbre.com

© 2025 CBRE, Inc. All rights reserved. This information has been obtained from sources believed reliable, but has not been verified for accuracy or completeness. You should conduct a careful, independent investigation of the property and verify all information. Any reliance on this information is solely at your own risk. CBRE and the CBRE logo are service marks of CBRE, Inc. All other marks displayed on this document are the property of their respective owners, and the use of such logos does not imply any affiliation with or endorsement of CBRE. Photos herein are the property of their respective owners. Use of these images without the express written consent of the owner is prohibited.

CBRE