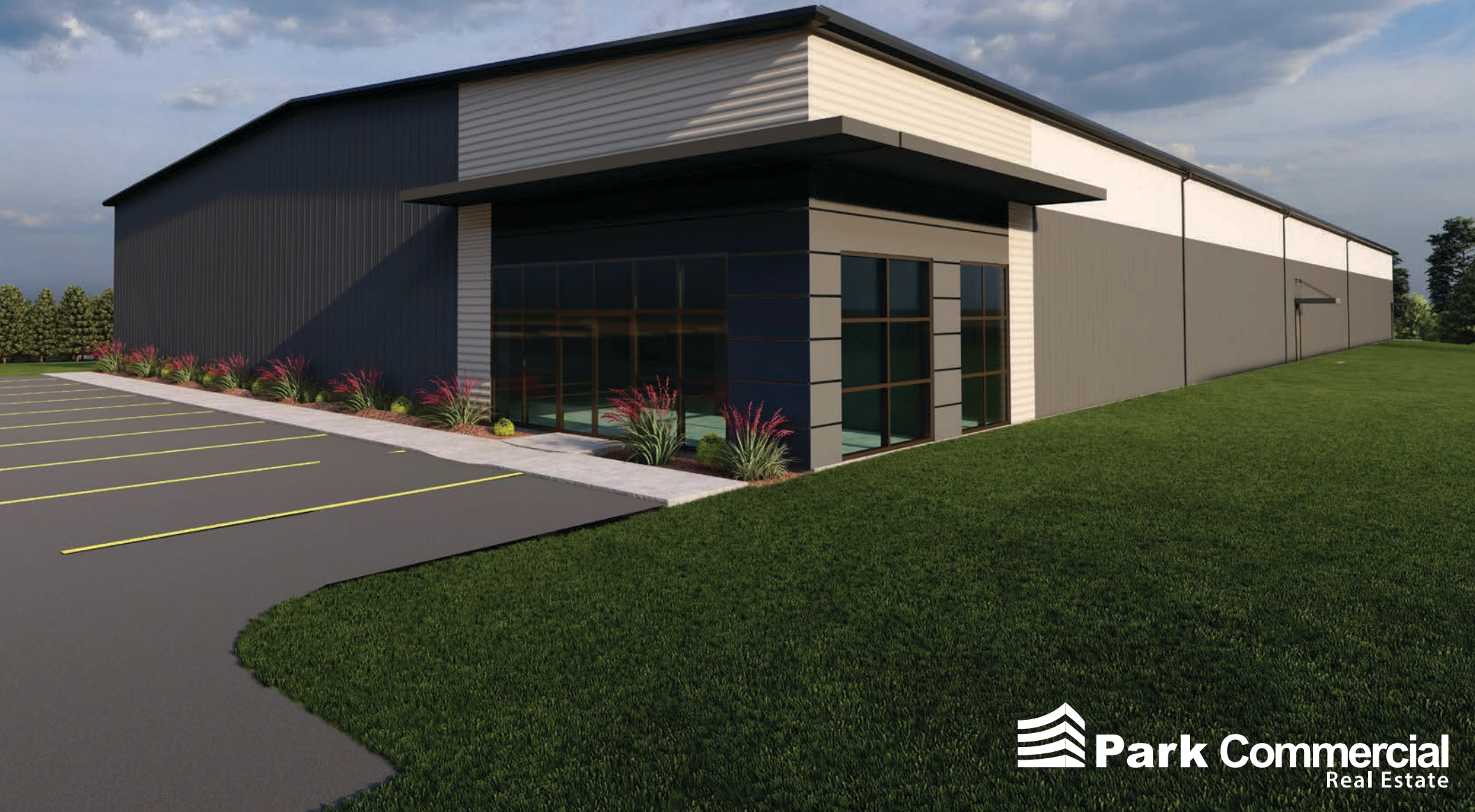


FOR SALE OR LEASE

INDUSTRIAL PROPERTY

2101 Chespark Drive | Gastonia, NC 28052

NEW CONSTRUCTION

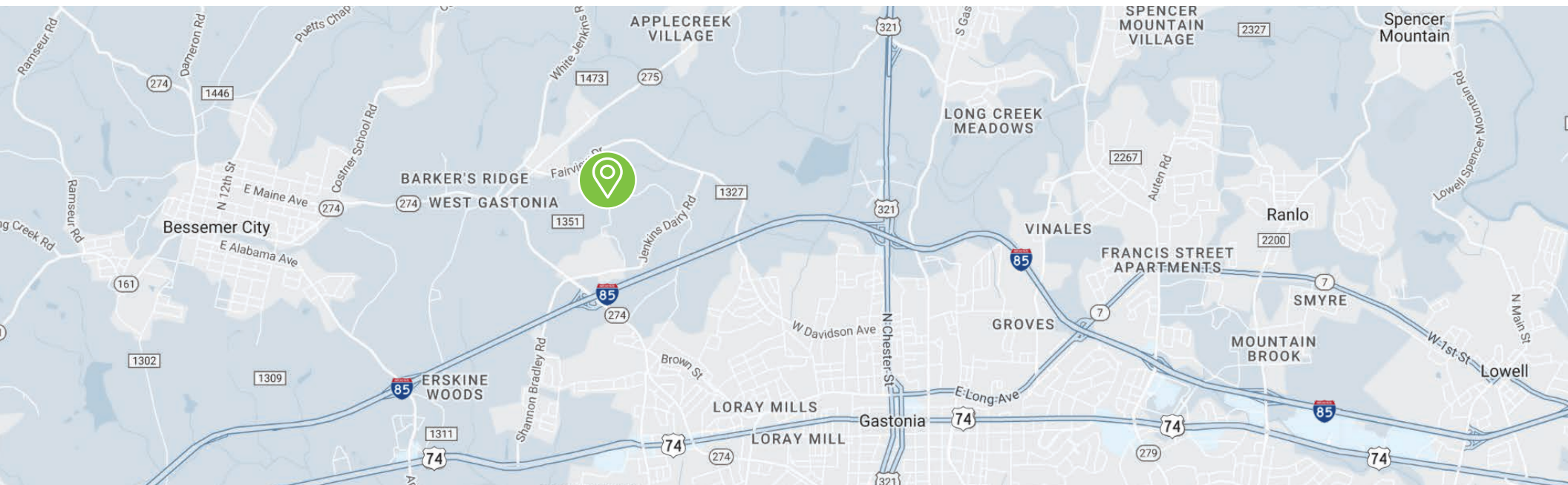


PROPERTY DETAILS

- +/- 25,000 SF
- +/- 3.5 AC
- Zoned 1-2
- (4) Dock High Doors
- (1) Oversized Drive-In Door
- 10 Parking Spaces
- Clear Height: 21-24 FT
- Ample truck court for parking and/or outside storage
- Short distance from Exit 14 on I-85
- Delivery: Q4 2024
- **Contact Broker for Pricing**

AVAILABLE FOR SALE OR LEASE

INDUSTRIAL SPACE



SITE PLAN



 Visit our Website

FOR MORE INFORMATION:

Michael A. Catanese, Jr., SIOR

Michael@ParkCRE.com

(704) 336-9012

 **Park Commercial**
Real Estate

Info@ParkCRE.com

230 E. Peterson Drive, Suite A, Charlotte, NC 28217