

# 49-29 30<sup>th</sup> Place Long Island City, New York

***2,200 SQ. FT. – 6,500 SQ. FT. SUITES  
2<sup>nd</sup> FLOOR ~ FOR LEASE***



**Lease Price: \$25.00 Per Sq. Ft.**

## ***Features:***

- ❖ FULLY AIR-CONDITIONED
- ❖ Direct elevator access
- ❖ 1,000 sq. ft. offices
- ❖ Natural light
- ❖ Private freight elevator
- ❖ 16' ceiling height
- ❖ Fireproof construction
- ❖ Wet sprinkler
- ❖ 200 Amps
- ❖ Gas heat
- ❖ Near #7 subway
- ❖ Zone M2-1
- ❖ Block 290 lot 25
- ❖ Near LIE & 59<sup>th</sup> Street Bridge

***For Further Information, Call Exclusive Agent:***

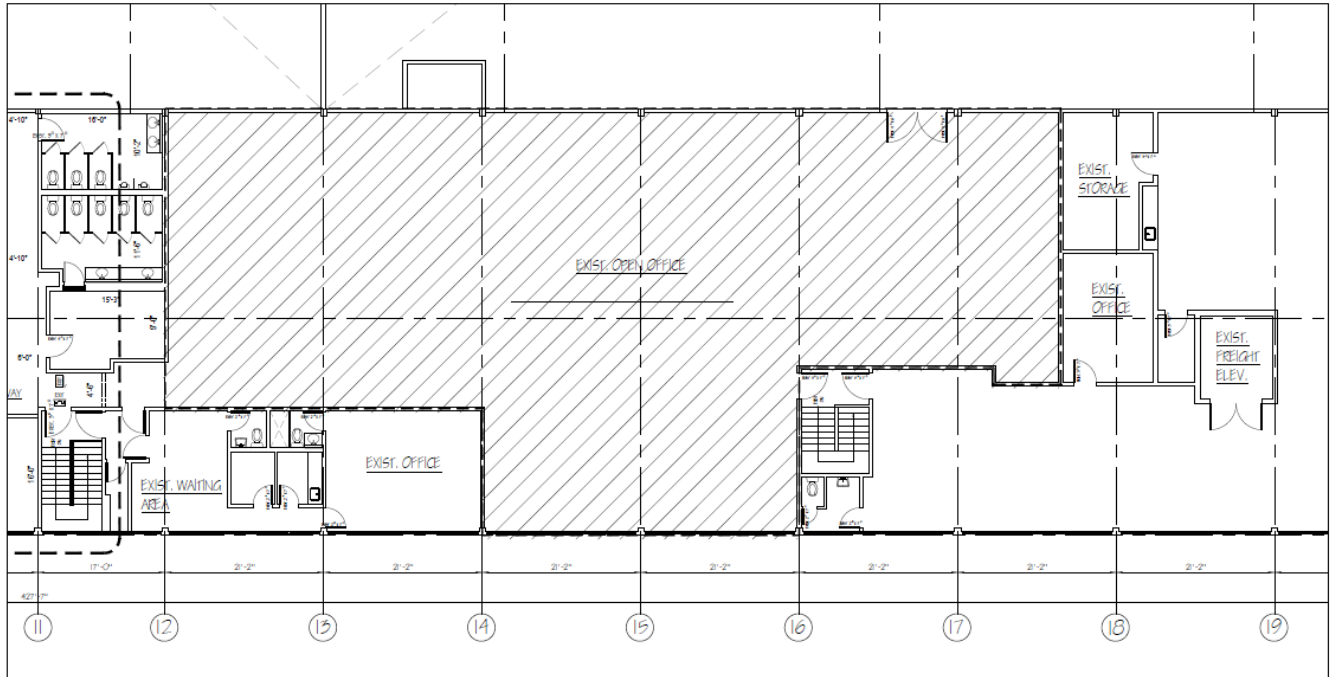
**Joseph Eliasoph - Salesperson**

**718-512-0292 / 917-861-3124**

**jeliasoph@s-z.com**

# 49-29 30<sup>th</sup> Place

## Long Island City, New York



**1** PART MEZZANINE FL. PLAN  
**A-002** SCALE 1/8" = 1'-0"

*For Further Information, Call Exclusive Agent:*

**Joseph Eliasoph - Salesperson**

**718-512-0292 / 917-861-3124**

**jeliasoph@s-z.com**

**Sholom &  
Zuckerbrot Realty LLC**  
Established 1962