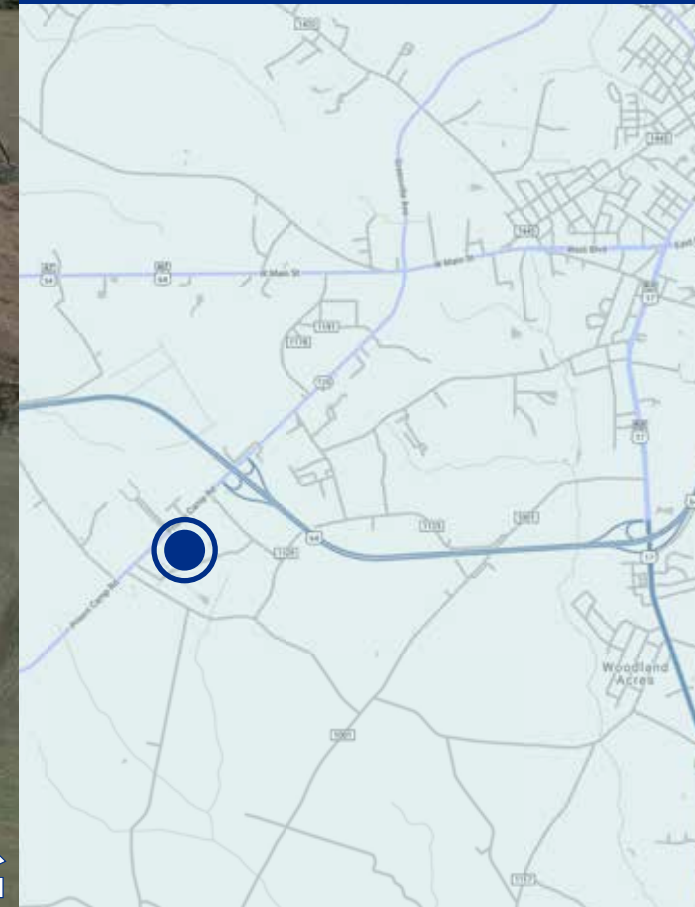


# 9 ACRES FOR SALE IN WILLIAMSTON

**0 HORSESHOE DRIVE  
WILLIAMSTON, NC 27892**



**ABOUT THE PROPERTY**

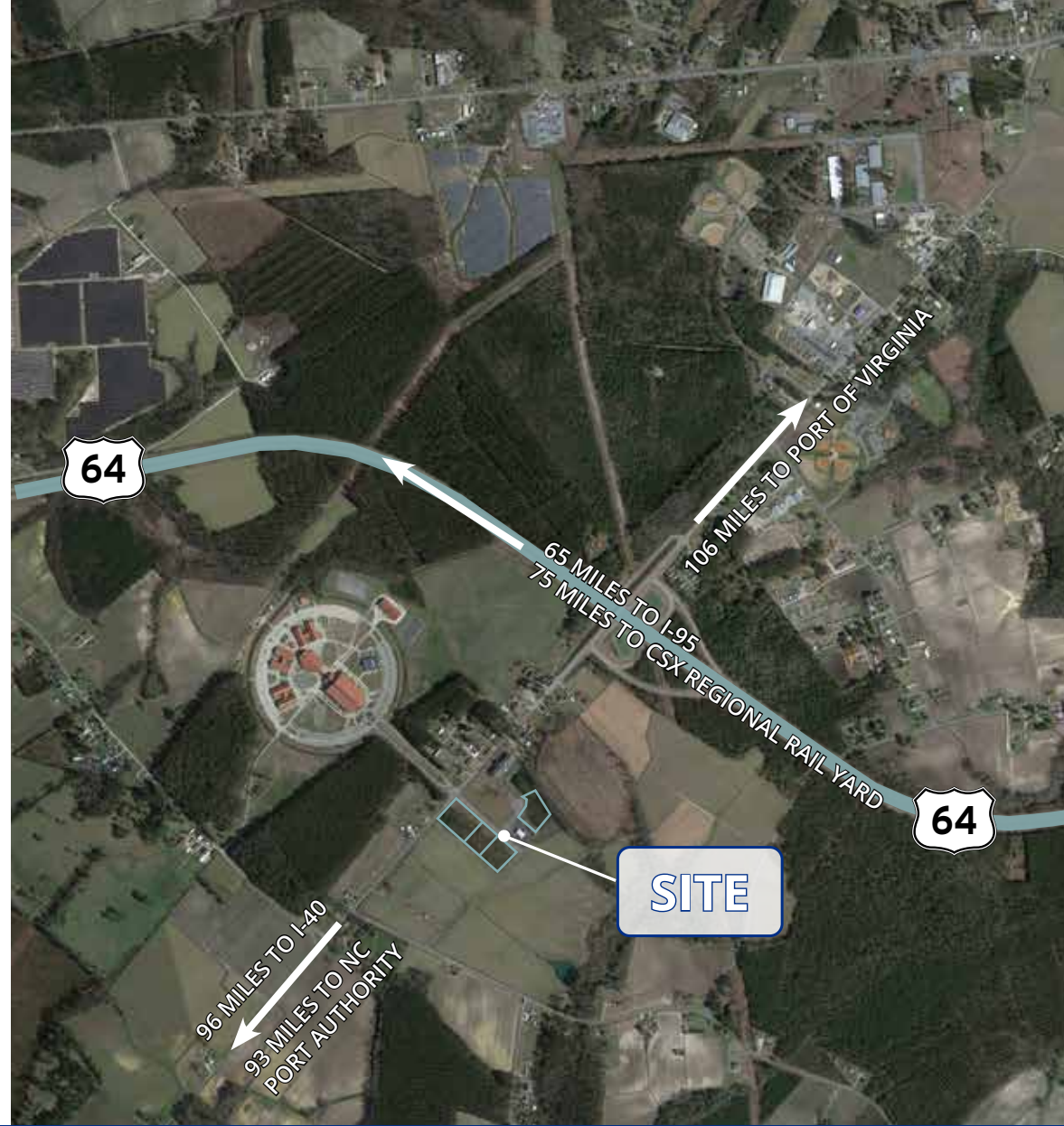
- Four commercial-zoned lots in Horseshoe Business Park near Bob Martin Eastern Agricultural Center in Williamston, NC. Underground utilities include electricity, natural gas, public water/sewer, as well as curb and gutter.
- Property is is zoned Highway Commercial: Permitted uses include Auto Parts, Service Station, Tire Service, Office, Automotive Repair (SU), and Animal Clinic (SU).

**PARCEL 5**  
 2.36+/- ACRES  
 PIN #0505897  
 \$314,666

**PARCEL 6**  
 2.58+/- ACRES  
 PIN #0505895  
 \$344,000

**PARCEL 7**  
 1.84+/- ACRES  
 PIN #0505896  
 \$245,333

**PARCEL 8**  
 2.22+/- ACRES  
 PIN #0505527  
 \$296,666


**MIKE KEEN**

 mkeen@trademarkproperties.com  
 919.795.1944 direct

1001 Wade Avenue, Suite 300, Raleigh, NC 27605 • trademarkproperties.com • 919.782.5552

The information contained herein was obtained from sources believed reliable; however, TradeMark Properties makes no guarantees, warranties, or representations as to the completeness or accuracy thereof. The presentation of this property is submitted subject to errors, omissions, changes of price or conditions prior to sale or lease, or withdrawal without notice.





The Senator Bob Martin Eastern Agricultural Center is a state-of-the-art show facility located on 168 acres and boasting a 108,000-square-foot indoor coliseum with permanent seating for 2,400 people. There are also 456 permanent stalls throughout six barns, paddocks, a 28,000 SF arena, three practice rings, 100 RV sites, and a 10,000 SF meeting center.

Events range from ATV and motocross races to truck pulls, circuses, boat shows and, of course, some of the best equestrian events around. There is a quickly-growing list of other exciting shows.

**BOB MARTIN EASTERN  
AGRICULTURAL CENTER**



## ECONOMIC DEVELOPMENT



## MARTIN COUNTY

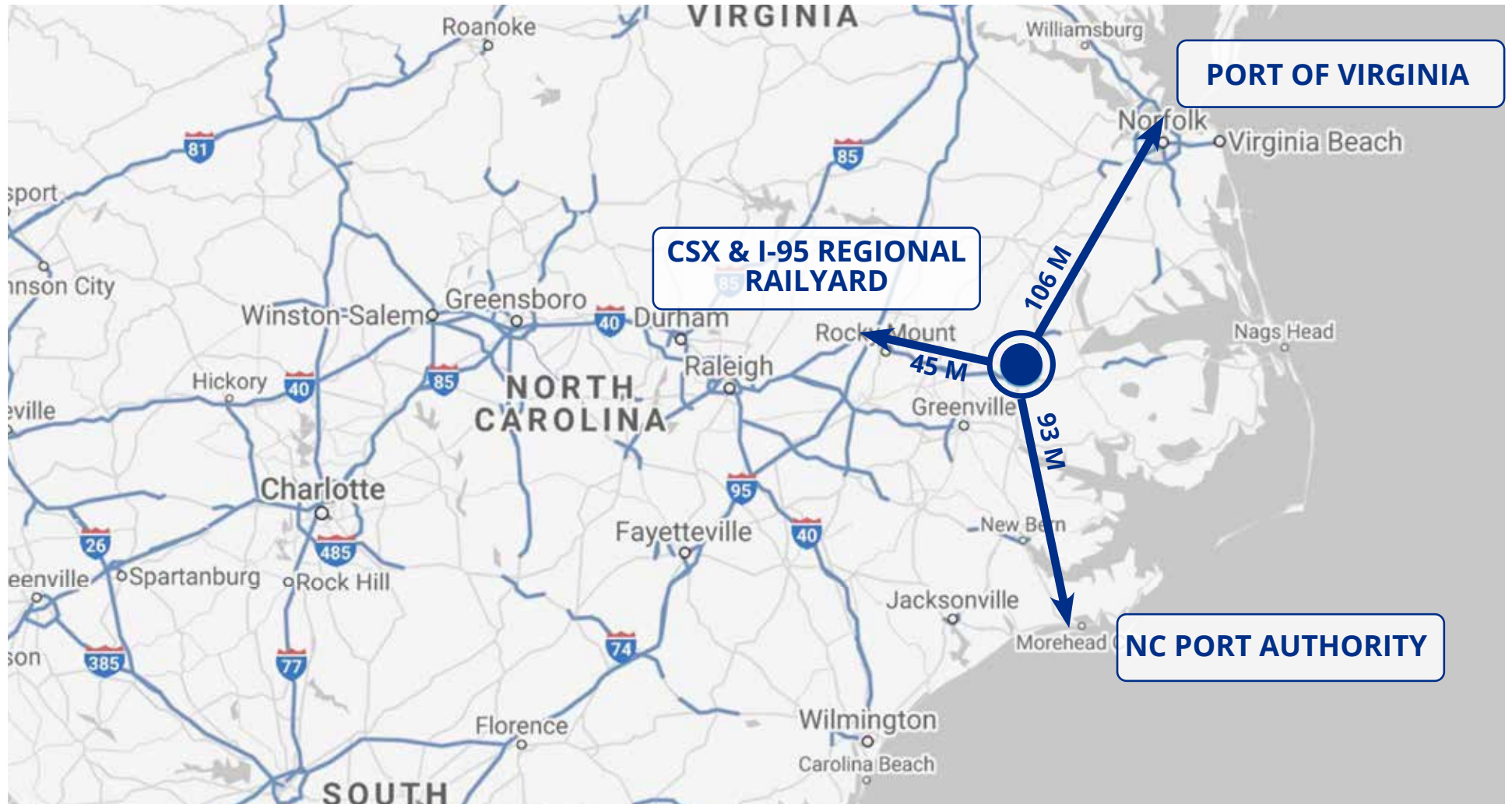
- Martin County is located in an area of NC that has abundant natural resources and farm products that can be used as raw materials for manufacturing. In addition, the region's transportation assets make the County an ideal location for any manufacturer or distributor that needs access to East Coast markets or proximity to seaports.

## CITY OF WILLIAMSTON

- Williamston's key strength is that the Town is the commercial and retail hub for Martin County. It attracts people for shopping, health care, and education. Key opportunities for the Town are centered on its greatest assets: Martin Community College and the Bob Martin Center. These two entities are economic drivers for Williamston both in terms of tourism, small business, and economic development in general.



**LOCATION LOGISTICS**



**MIKE KEEN**

mkeen@trademarkproperties.com

919.795.1944 direct

1001 Wade Avenue, Suite 300, Raleigh, NC 27605 • trademarkproperties.com • 919.782.5552

The information contained herein was obtained from sources believed reliable; however, TradeMark Properties makes no guarantees, warranties, or representations as to the completeness or accuracy thereof. The presentation of this property is submitted subject to errors, omissions, changes of price or conditions prior to sale or lease, or withdrawal without notice.