



# Shop and Outdoor Storage For Lease

1575 Access Rd | Covington, GA

- o +/- 3 Acres
- o +/- 5,500 SF
- o 3 Bay Shop
- o Frontage on I-20
- o Outdoor Storage

## Contact:

Nat Weikert  
OnPace Partners  
+1 678 575 4607  
[Nat.weikert@onpacepartners.com](mailto:Nat.weikert@onpacepartners.com)



1575 Access Road | Covington, GA

For Lease



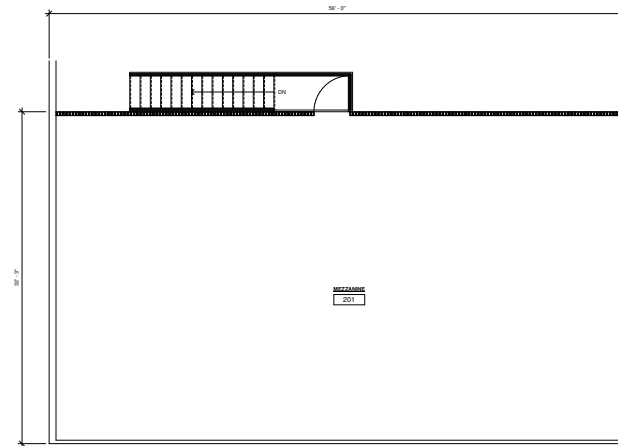
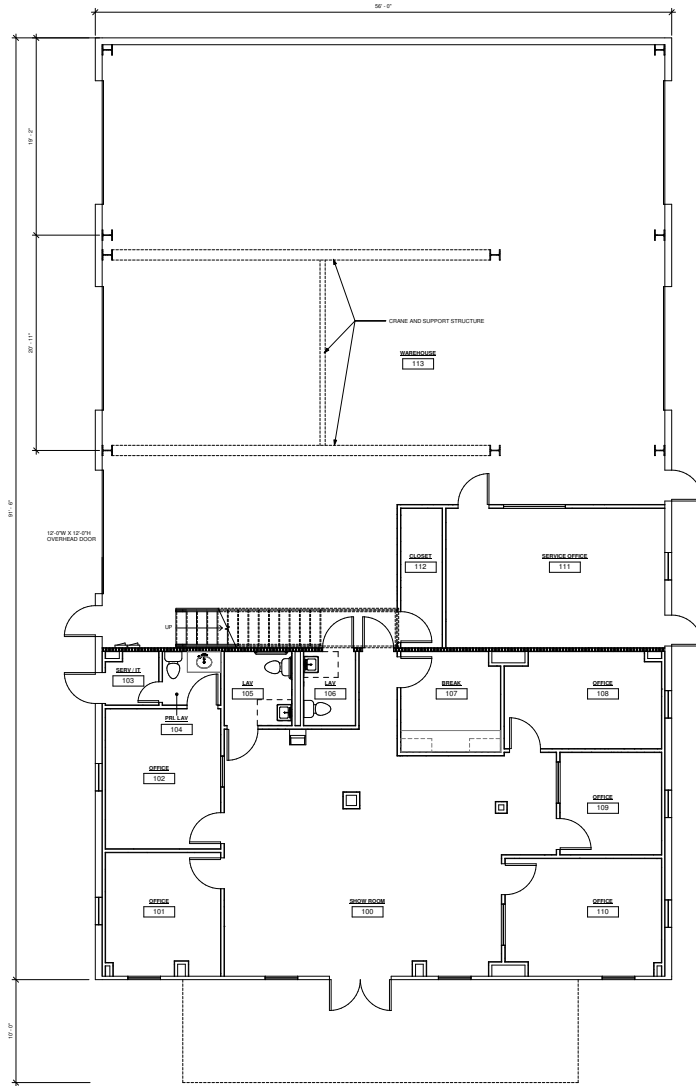
<b>Building Address:</b>	1575 Access Rd, Covington, GA
<b>Acreage:</b>	+/- 3 Acres
<b>Building:</b>	+/- 5,500 SF shop and office
<b>Bays:</b>	3 bays, 2 drive-thru
<b>Other Improvements:</b>	Fenced, gated, secured, and lit
<b>Availability Date:</b>	November 1, 2024
<b>Power:</b>	120/240 volts   200 amps   3-phase service
<b>Representative Approved Uses:</b>	Building Materials / Supply Equipment Sales and Rental Farm Equipment Sales and Rental Landscaping Materials / Supply Modular Building Sales and Display
<b>Access:</b>	I-20 (1 Mile) via 2 separate interchanges
<b>Highway Frontage:</b>	500 Feet

1575 Access Road | Covington, GA  
*For Lease*



1575 Access Road | Covington, GA  
For Lease

# FLOOR PLAN



## Contact:

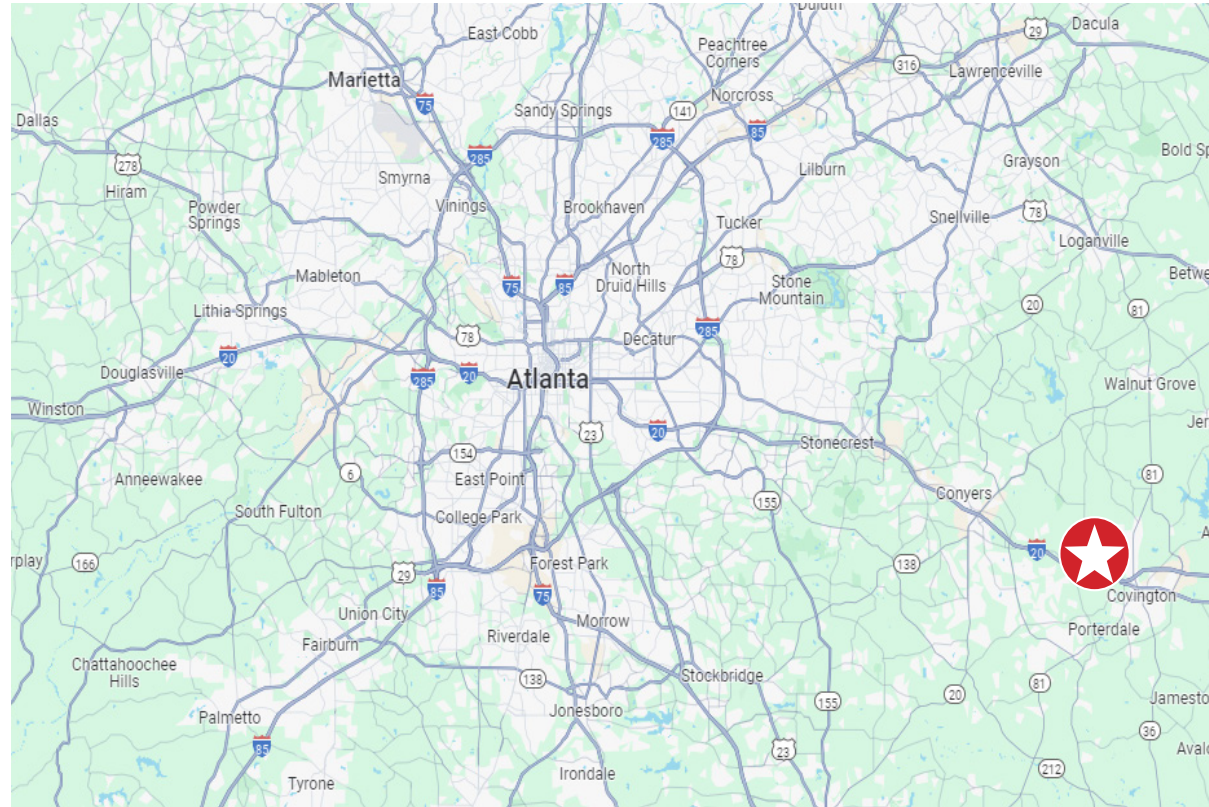
Nat Weikert  
OnPace Partners  
+1 678 575 4607  
Nat.weikert@onpacepartners.com



1575 Access Road | Covington, GA  
For Lease

## DRIVE TIMES

Point of Interest	Miles
I-20	1
Downtown Covington	4
I-285	21
Downtown ATL	31



### Contact:

Nat Weikert  
OnPace Partners  
+1 678 575 4607  
Nat.weikert@onpacepartners.com

