

FOR SALE

551 14th Avenue
Longview, WA 98632

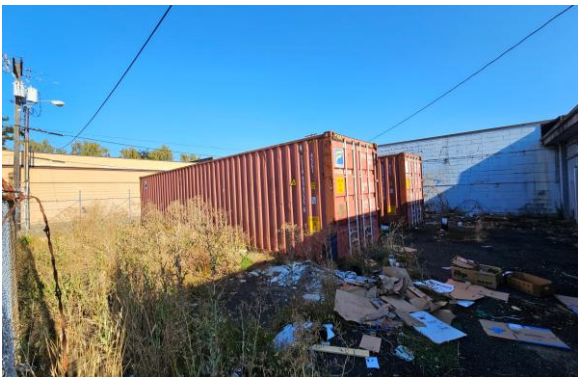
\$299,000



Chris Roewe
Owner/Broker
C. 360.556.5101
chris@woodfordcre.com

Lindsay Johnson
Licensed Assistant
O. 360.501.5500
lindsay@woodfordcre.com

www.woodfordcre.com



ABOUT THE PROPERTY

Excellent opportunity to own a versatile 2,850 SF mixed-use commercial/industrial property, ideally suited for a variety of business types. Located in a highly accessible area just minutes from I-5 and the Oregon border, this building features a street-facing office or potential retail space, along with a clear-span warehouse at the rear. Multiple offices inside provide flexibility for operations, while a 10-ft grade-level roll-up door opens to a fully fenced, approximately 3,000 SF yard with gated alley access ideal for parking, storage, or additional workspace. The property has seen numerous upgrades over the past decade, including a newer roof and updated electrical panel. This location offers both convenience and adaptability for your growing business. Schedule your private tour today.



Address

551 14th Avenue, Longview, WA 98632



Offering Price

\$299,000



Price Per SF

\$104.91



Total Land Area

6,534 SF



Building Size

2,850 SF



Building Info

Built 1968



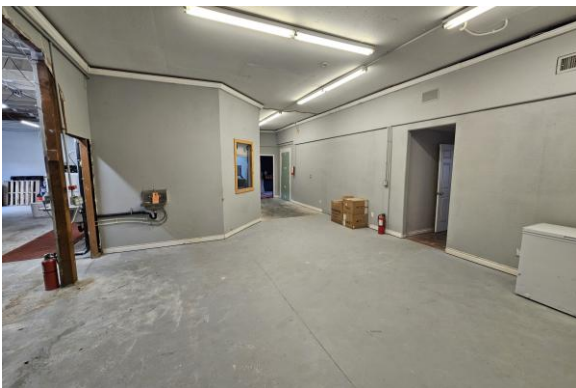
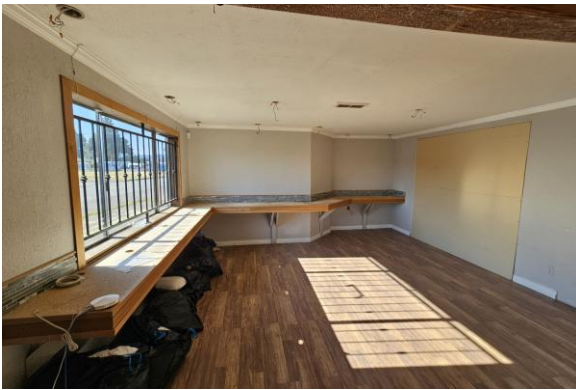
Parcel

0215001





Zoning


MU-C/I Mixed Use Commercial/Industrial District






 woodfordcre.com

 chris@woodfordcre.com

 (P)360.501.5500

 208 Vine St., Kelso, WA

The information contained herein has been obtained from sources we understand to be reliable. Whilst we do not doubt its accuracy it has not been verified & we make no guarantees, warranty or representations about it. Any projections, opinions, assumptions or estimates used are for example only. You & your advisors should conduct a careful independent investigation of the property to determine the property's satisfaction to your needs.

© Woodford Commercial Real Estate.