



445 North I Street | Tulare, CA

Property For Lease

1005 N Demaree Street
Visalia, California 93291
O | 559.754.3020
F | 559.429.4016
www.mdgre.com

GRAHAM | & ASSOCIATES

Matt Graham
Lic# 01804235
www.mdgre.com

to learn more, visit: www.mdgre.com

PROPERTY DETAILS

Address:	445 North I Street
APN:	169-152-011
Square Feet Available:	7,300 +/- SF
Lot Size:	15,000 +/- SF
Zoning	M1-D
Lease Rate:	\$0.85 Per Sq. Ft. Gross

Additional Comments:

Great industrial building available for lease in Tulare. Well maintained building and with gated, concrete parking lots. Well located in Tulare with easy 99 Freeway access via Cross Ave. Please call for further details.



Contact Broker:
Matt Graham
Lic# 01804235

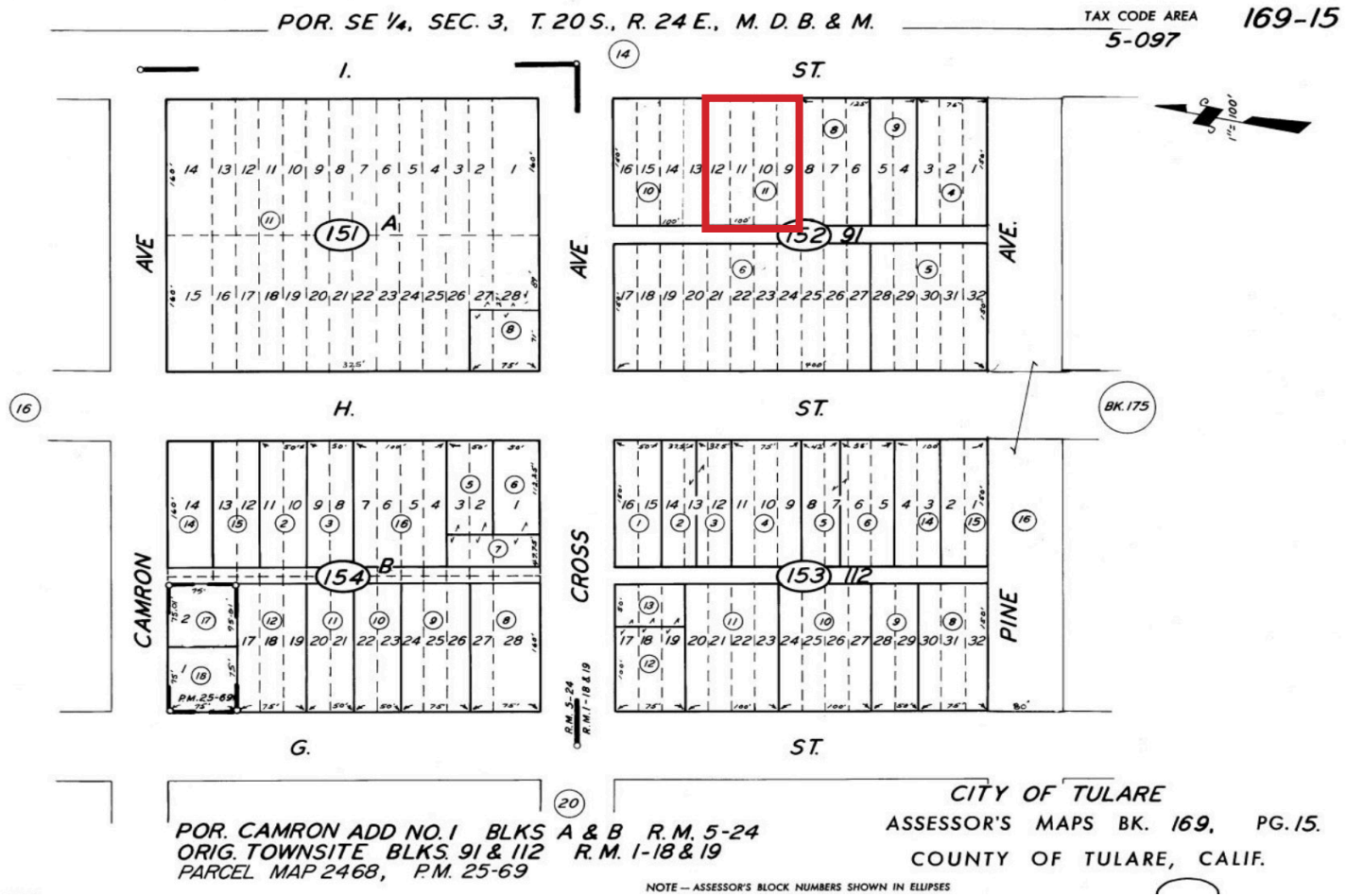
to learn more, visit: www.mdgre.com

1005 N Demaree Street
Visalia, California 93291
O | 559.754.3020

PLEASE NOTE: ALL INFORMATION AND REPRESENTATION MADE HEREIN, WHILE NOT GUARANTEED, HAVE BEEN SECURED FROM SOURCES WE BELIEVE TO BE RELIABLE, HOWEVER, THEY ARE NOT WARRANTED BY MATT GRAHAM & ASSOCIATES AND ARE SUBJECT TO CHANGE WITHOUT NOTICE.

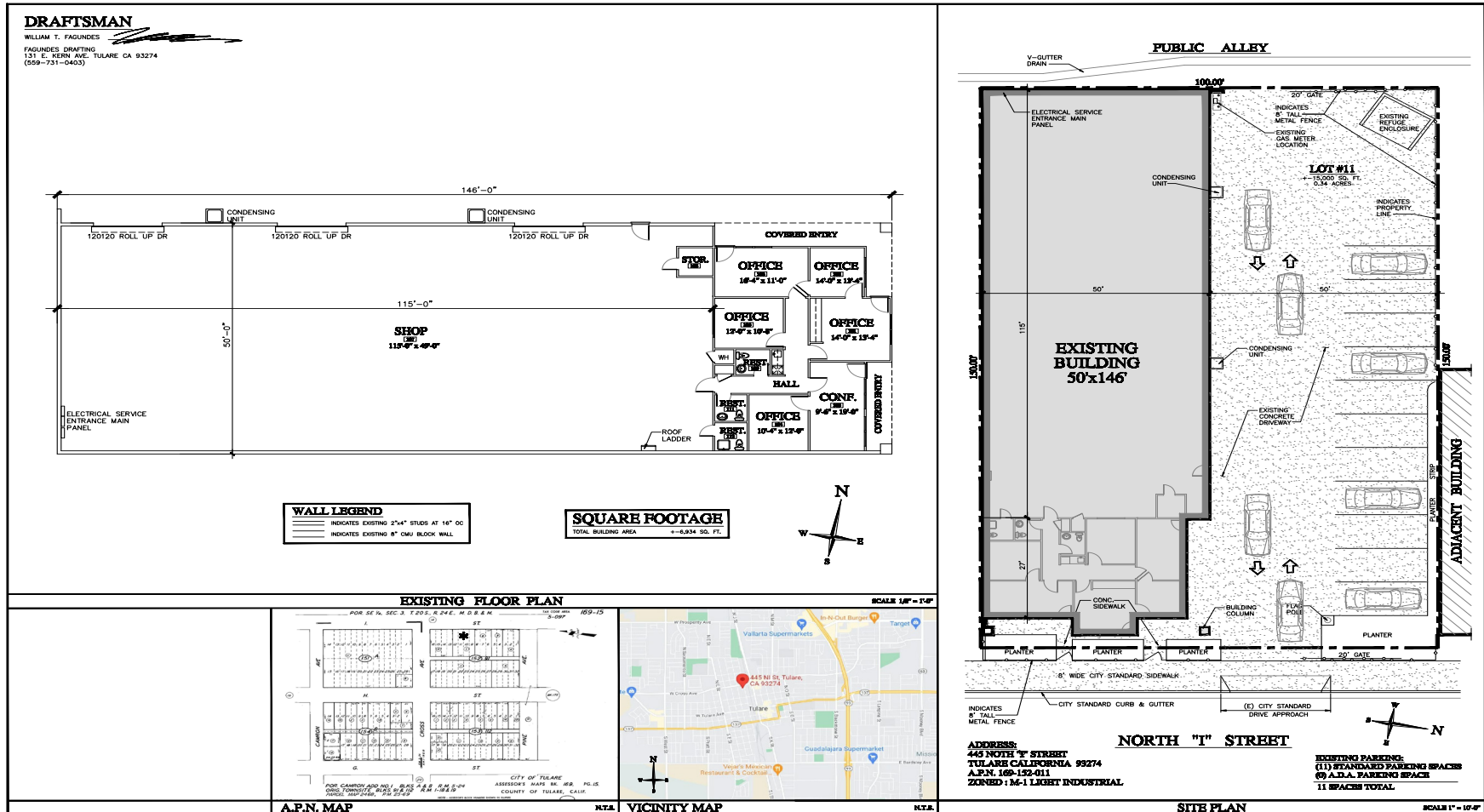
TAX MAP

70
71



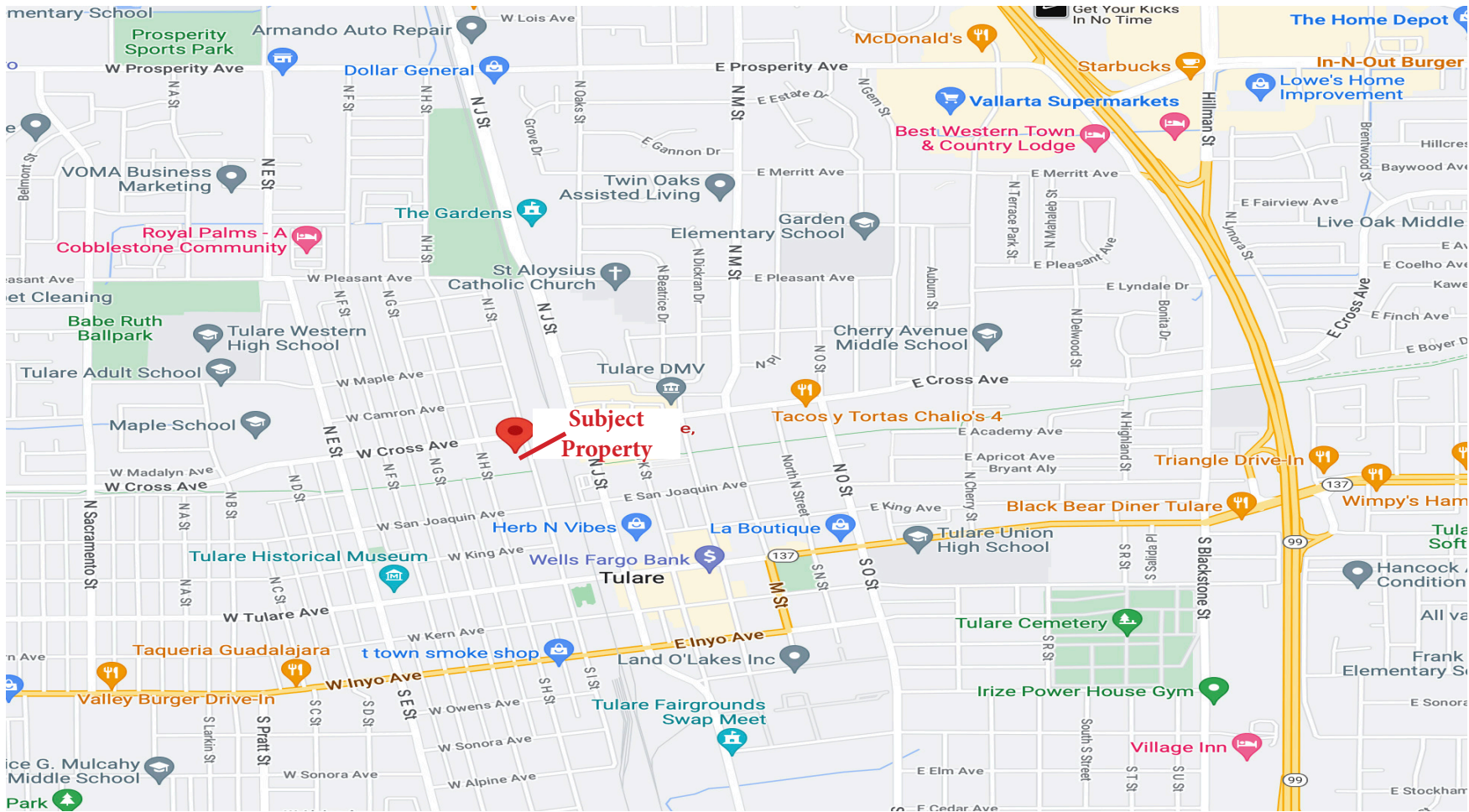
PLEASE NOTE: ALL INFORMATION AND REPRESENTATION MADE HEREIN, WHILE NOT GUARANTEED, HAVE BEEN SECURED FROM SOURCES WE BELIEVE TO BE RELIABLE, HOWEVER, THEY ARE NOT WARRANTED BY MATT GRAHAM & ASSOCIATES AND ARE SUBJECT TO CHANGE WITHOUT NOTICE.

445 North I St - SITE PLAN



PLEASE NOTE: ALL INFORMATION AND REPRESENTATION MADE HEREIN, WHILE NOT GUARANTEED, HAVE BEEN SECURED FROM SOURCES WE BELIEVE TO BE RELIABLE, HOWEVER, THEY ARE NOT WARRANTED BY MATT GRAHAM & ASSOCIATES AND ARE SUBJECT TO CHANGE WITHOUT NOTICE.

LOCATION MAP



PLEASE NOTE: ALL INFORMATION AND REPRESENTATION MADE HEREIN, WHILE NOT GUARANTEED, HAVE BEEN SECURED FROM SOURCES WE BELIEVE TO BE RELIABLE, HOWEVER, THEY ARE NOT WARRANTED BY MATT GRAHAM & ASSOCIATES AND ARE SUBJECT TO CHANGE WITHOUT NOTICE.

PROPERTY LAYOUT



PLEASE NOTE: ALL INFORMATION AND REPRESENTATION MADE HEREIN, WHILE NOT GUARANTEED, HAVE BEEN SECURED FROM SOURCES WE BELIEVE TO BE RELIABLE, HOWEVER, THEY ARE NOT WARRANTED BY MATT GRAHAM & ASSOCIATES AND ARE SUBJECT TO CHANGE WITHOUT NOTICE.