

DIRECT ACCESS TO
THE BETHESDA METRO STATION
ELEVATOR & METRO PARK & RIDE



READY-TO-GO SUITES | 1,2, OR 3 YEAR
SUITES OF ALL SIZES | WALKABLE AMENITIES

Leasing Contacts:



NATE CROWE
P: 703.201.4096

ncrowe@scheerpartners.com



KATIE DATIN
P: 203.948.4155

kdatin@scheerpartners.com



HIGHLIGHTS

- Class A Office building located in downtown Bethesda
- Ready-to-go suites with short-term leases available
- Shared conference room available
- A block away from the Bethesda Metro Station
- Steps from the restaurants & shops at Bethesda Row



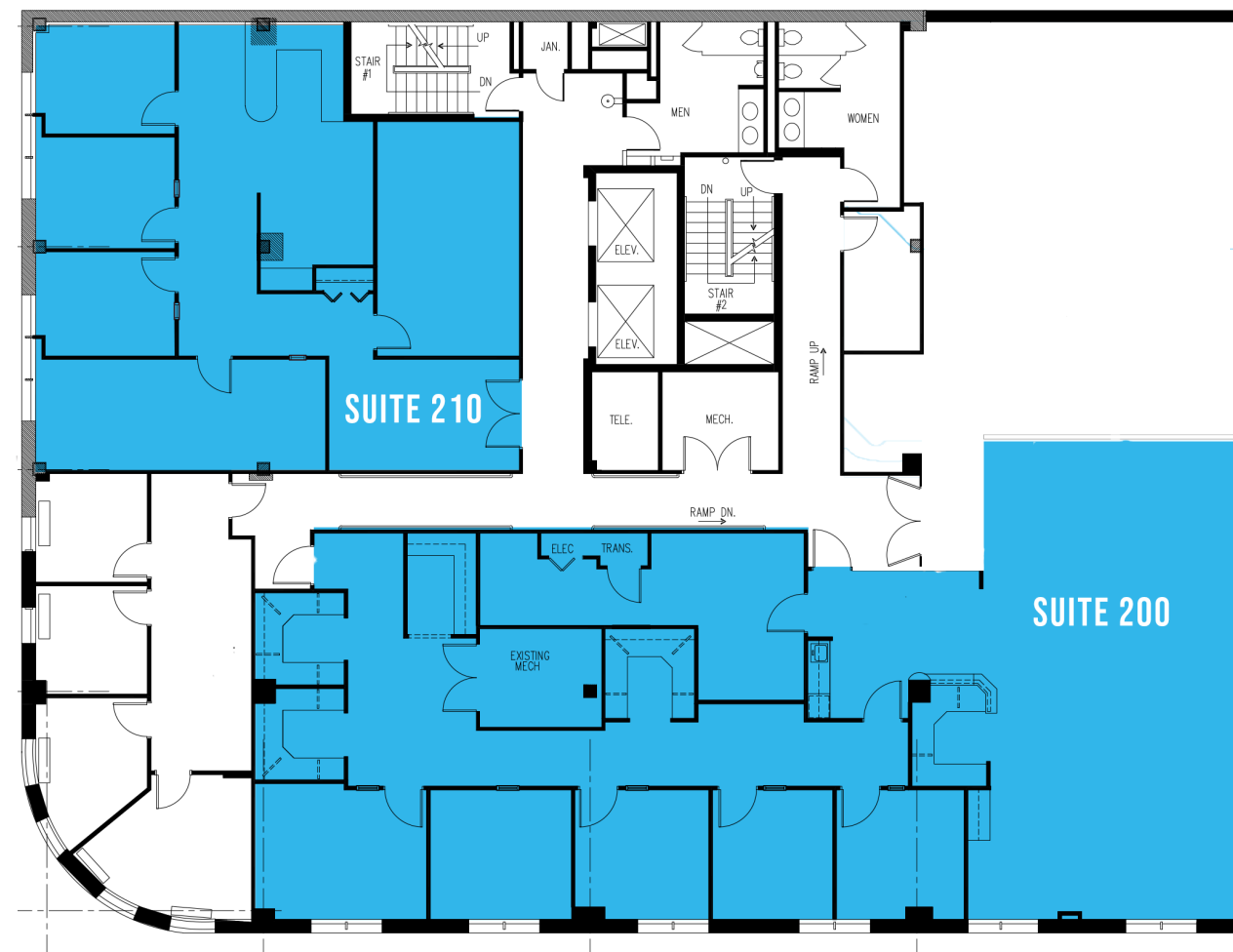
FLOORPLANS

SECOND FLOOR -

Suite 200 - 3,131 SF

Suite 210 - 1,976 SF

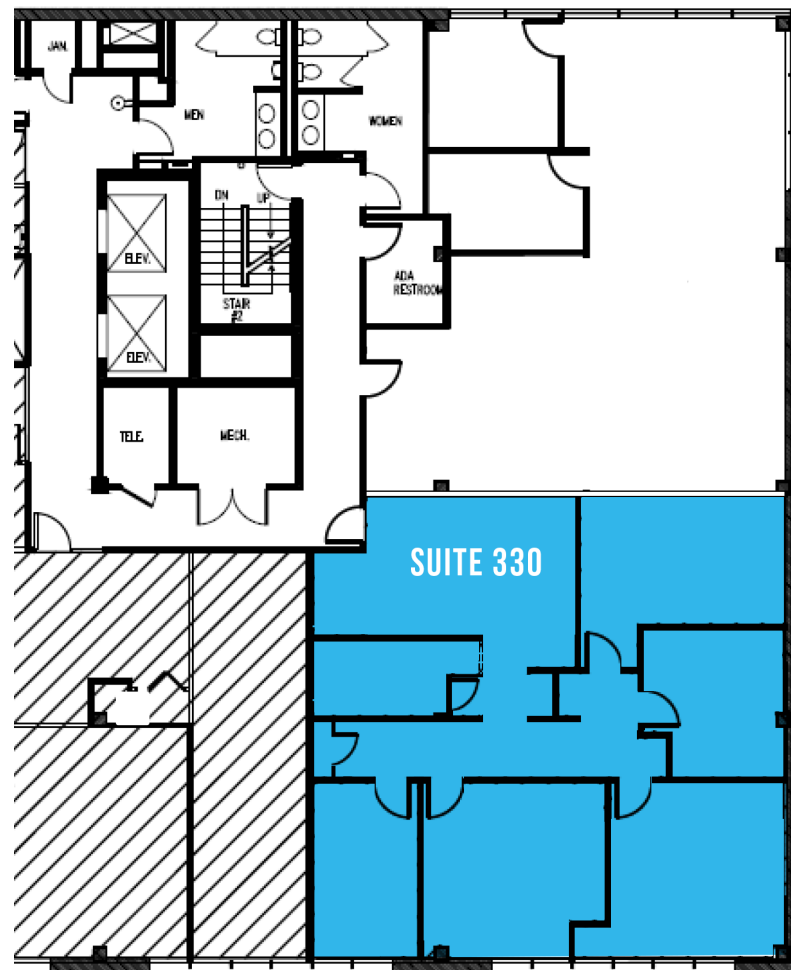
[SUITE 200
CLICK TO TOUR](#)



THIRD FLOOR -

Suite 330 - 2,101 SF

SUITE 330
CLICK TO TOUR



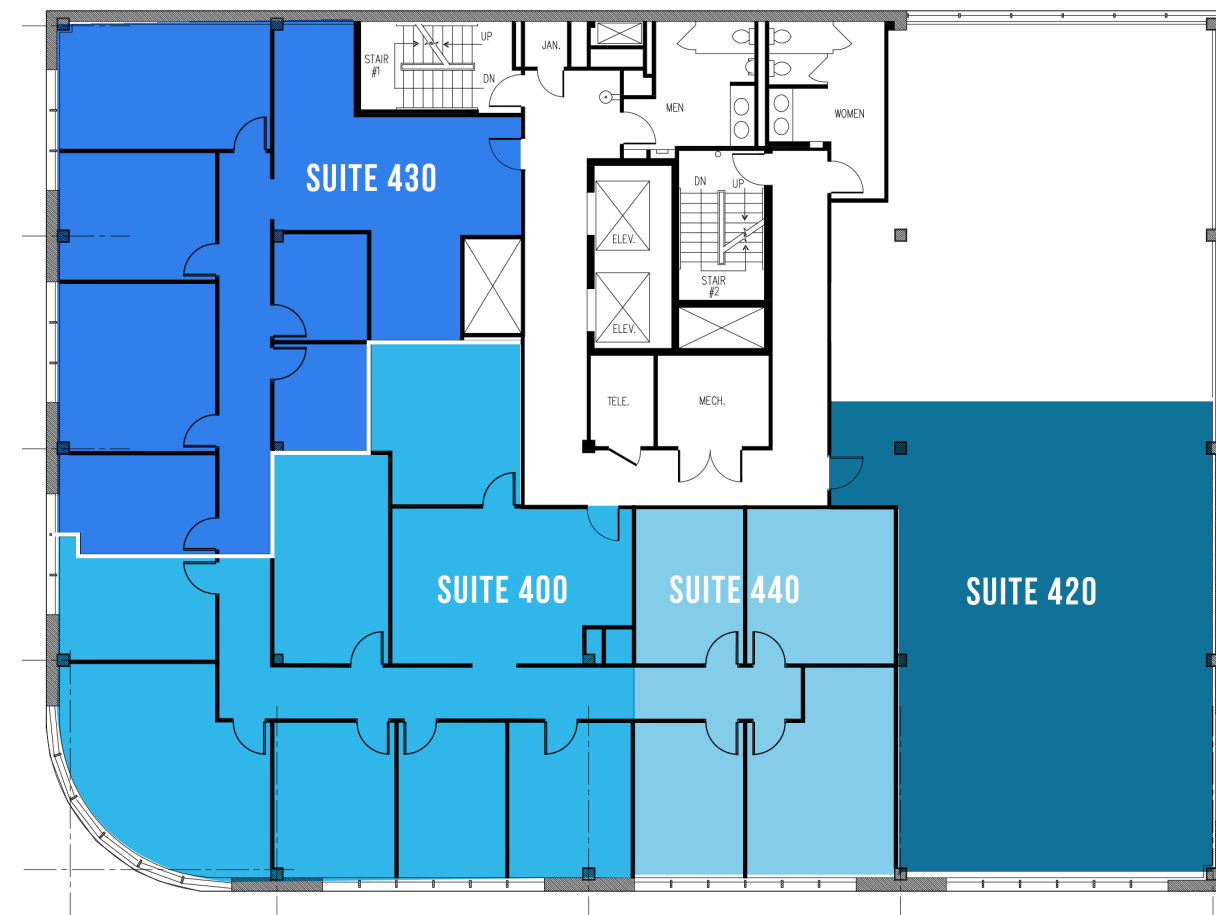
FOURTH FLOOR -

Suite 400 - 2,279 SF

Suite 420 - 1,902 SF

Suite 430 - 1,864 SF

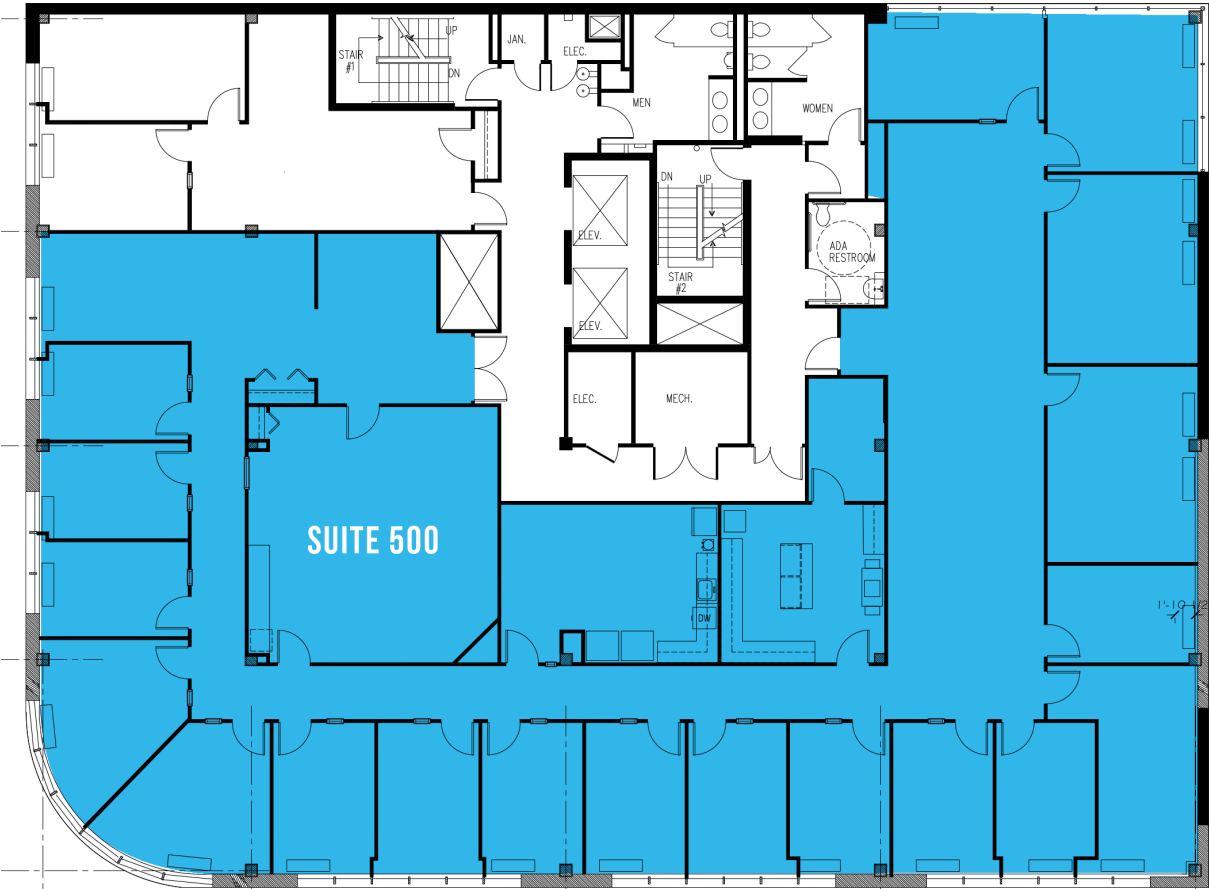
Suite 440 - 1,078 SF



6 Offices
Open Work Area

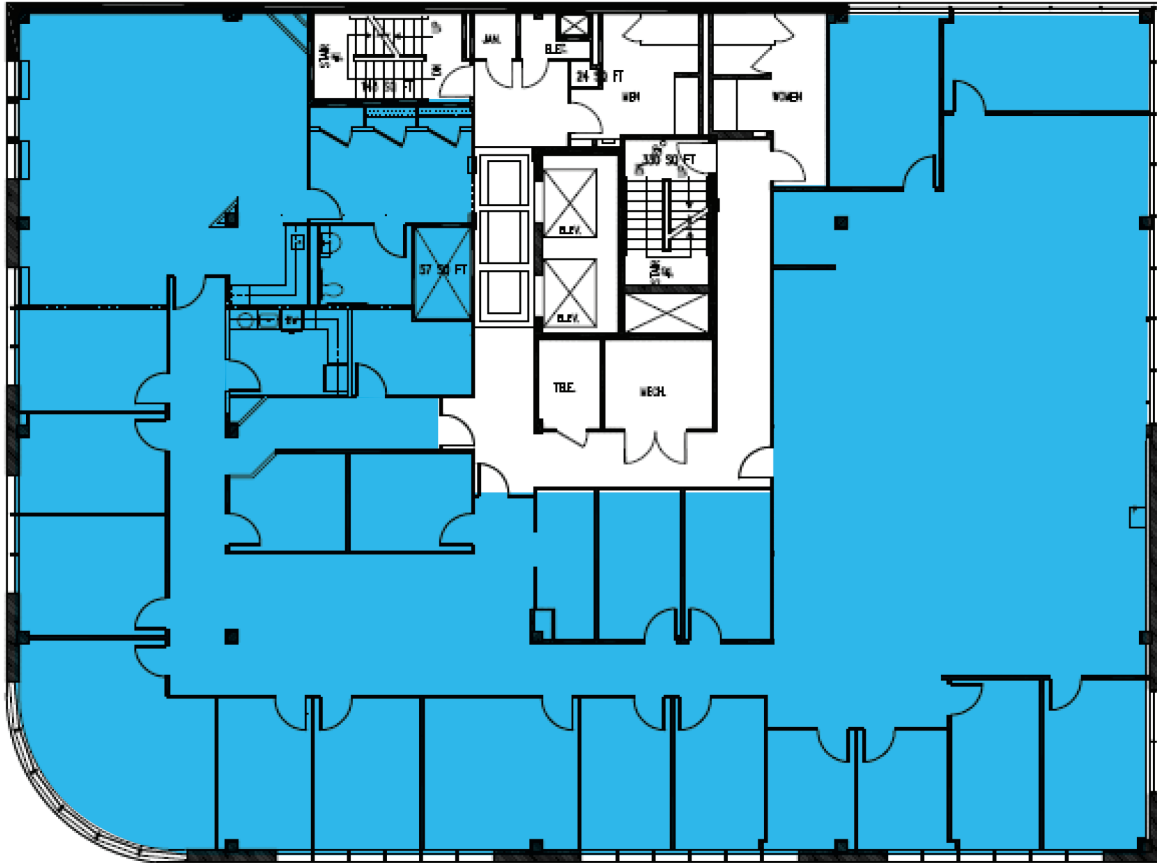
FIFTH FLOOR -

Suite 500 - 7,463 SF



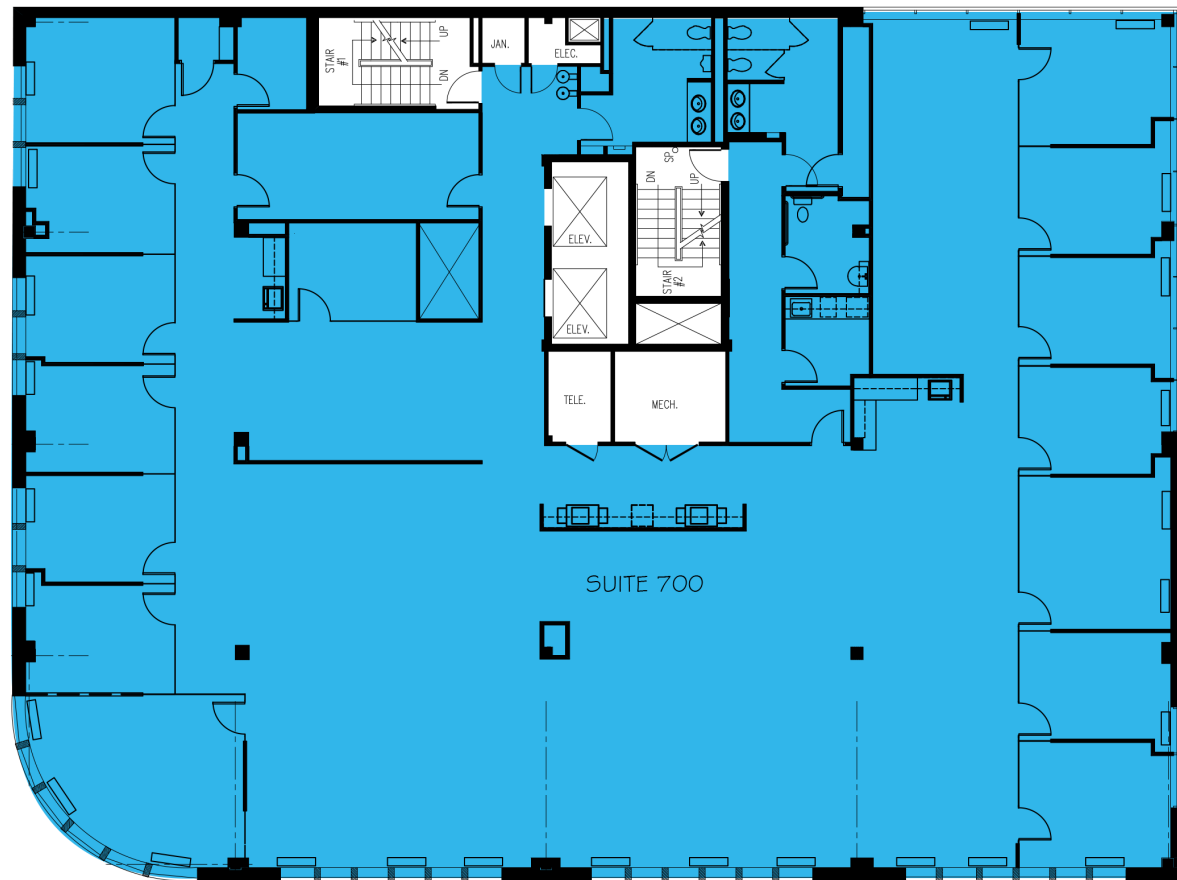
SIXTH FLOOR -

Suite 600 - 8,333 SF



SEVENTH FLOOR -

Suite 700 - 8,333 SF



NINTH FLOOR - 8,333 SF TOTAL

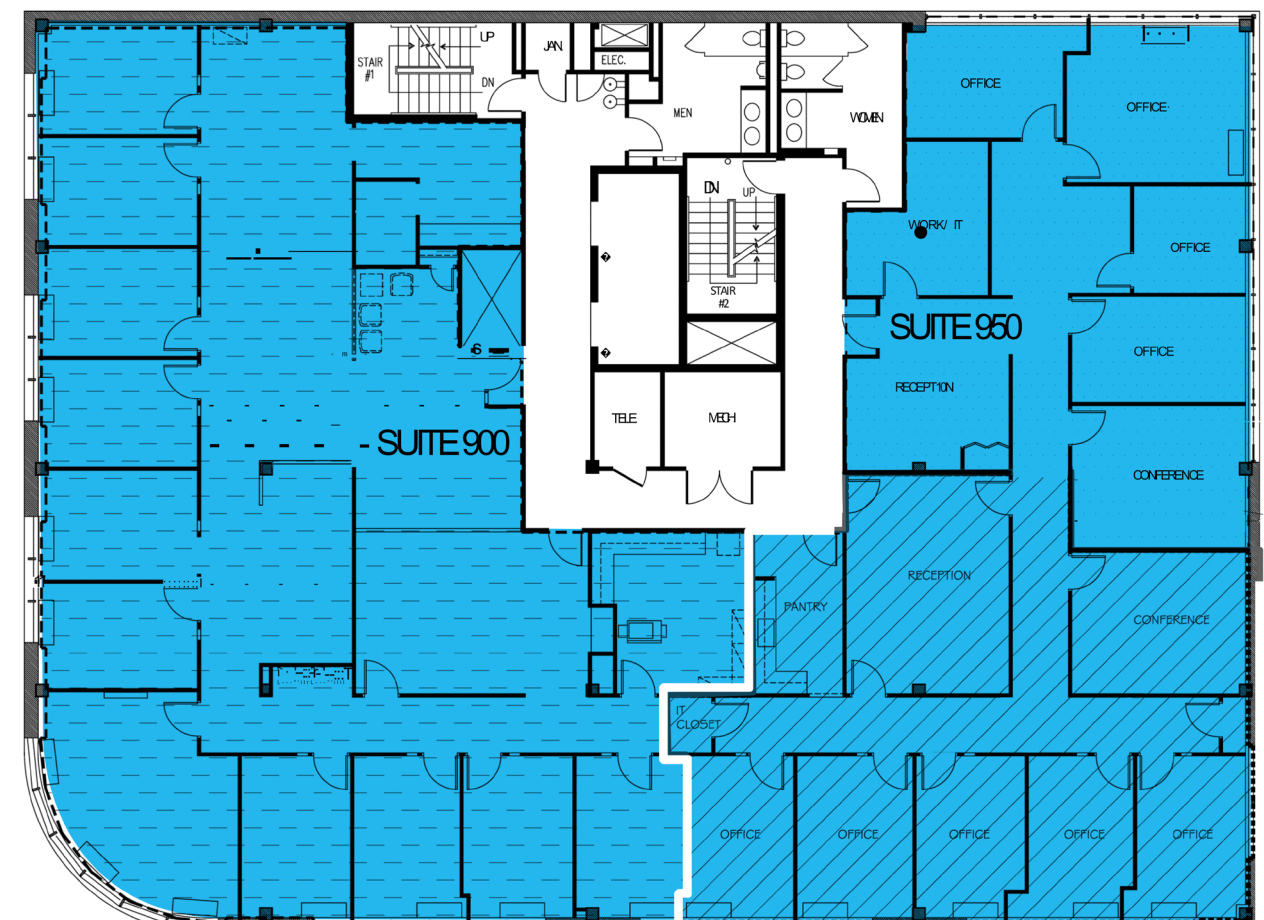
Suite 900 - 4,473 SF

Suite 950 - 3,860 SF

[SUITE 900
CLICK TO TOUR](#)



[SUITE 950
CLICK TO TOUR](#)



ELEVENTH FLOOR - Available 1/1/24

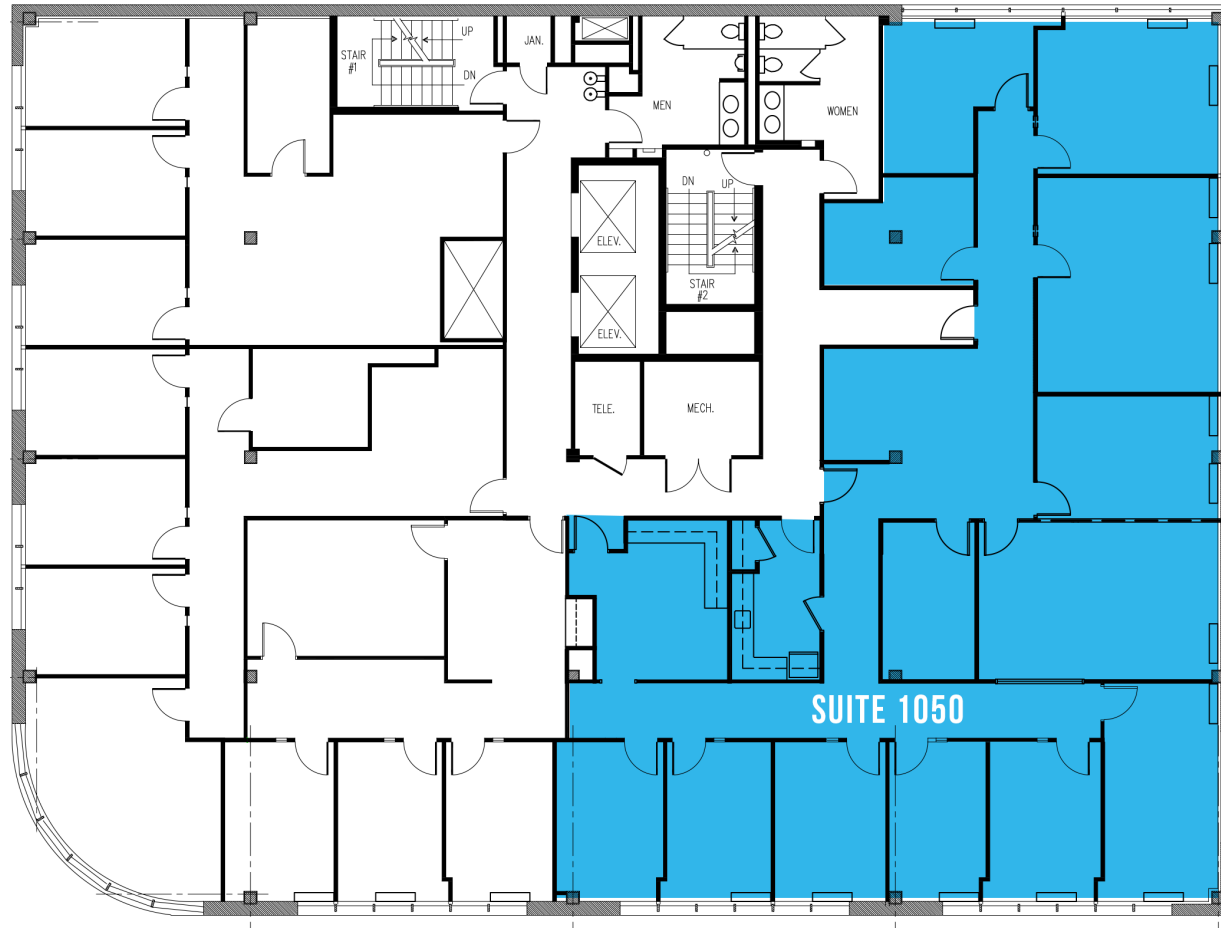
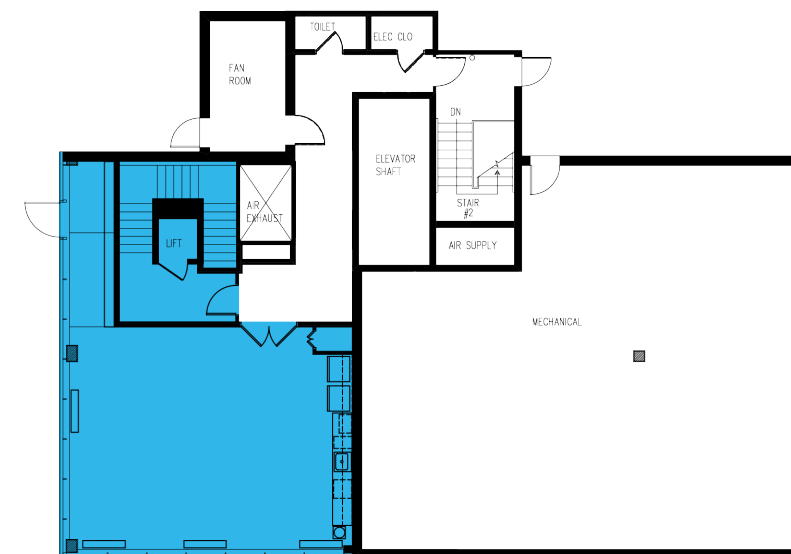
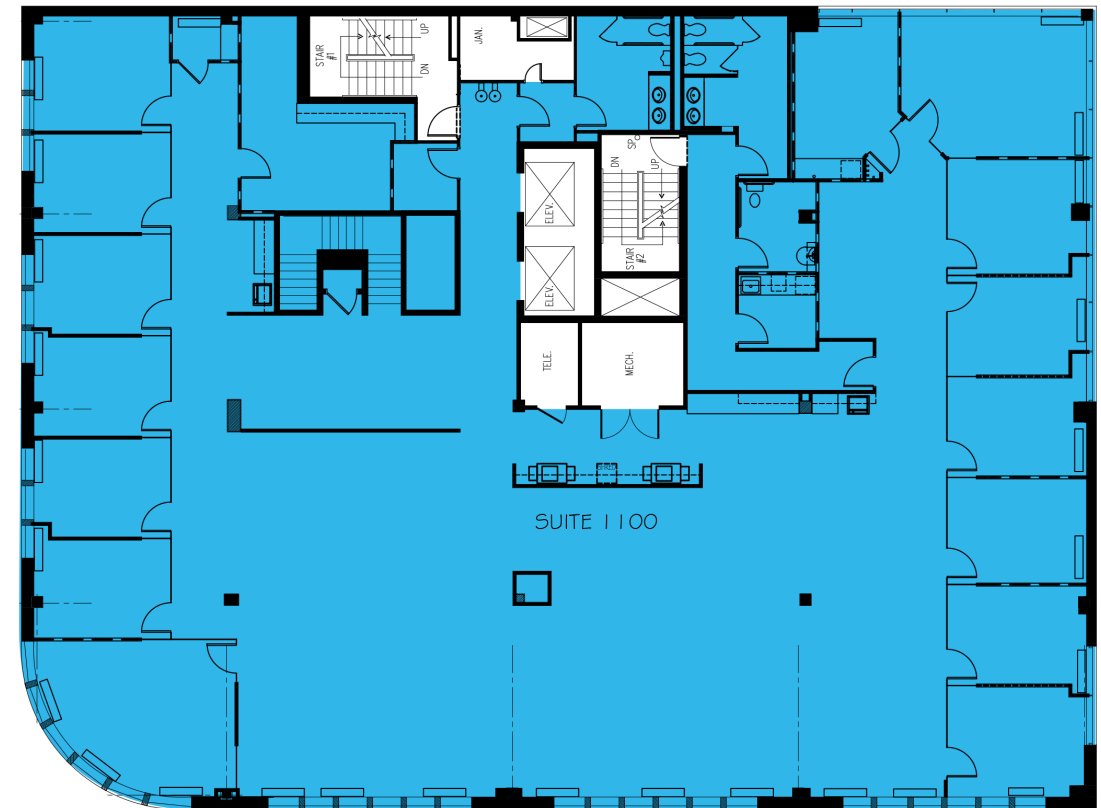
Suite 1100 - 9,466 SF
Private Penthouse - 1,133 SF



TENTH FLOOR -

Suite 1050 - 4,286 SF

SUITE 1050
CLICK TO TOUR



LOCATION OVERVIEW



LOCATION & AMENITIES -

- A Half block from the Bethesda Metro
- 0.2 mile from the future Purple Line Connection
- A quick walk from amenities at Bethesda Row
- Accessible via I-495 and I-270

EXCELLENT WALK SCORE

 98

VERY BIKEABLE

 82