

INDUSTRIAL PROPERTY // FOR SALE

CLEAN - CRANE INDUSTRIAL BUILDING "GREEN ZONE"

23565 SCHOENHERR RD
WARREN, MI 48089



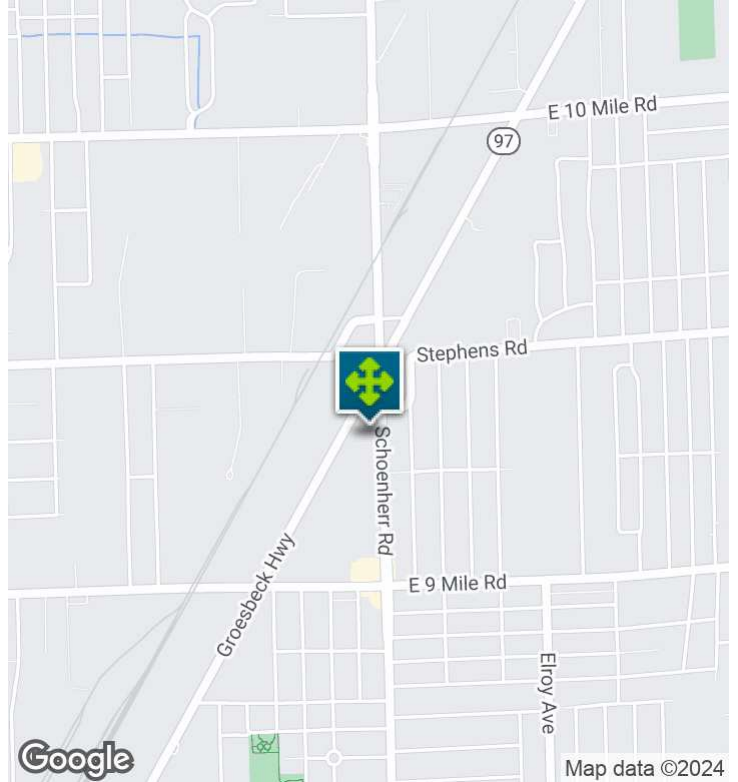
- 7,336 SF well-maintained building with outside storage
- Fully air-conditioned shop
- Three (3) overhead doors and 2-3 ton bridge cranes
- Inspection room for quality control and precision
- Two (2) mezzanine storage areas for additional space
- Convenient I-696 access, in the "green zone"



26555 Evergreen Road, Suite 1500
Southfield, MI 48076
248.358.0100
pacommercial.com

We obtained the information above from sources we believe to be reliable. However, we have not verified its accuracy and make no guarantee, warranty or representation about it. It is submitted subject to the possibility of errors, omissions, change of price, rental or other conditions, prior sale, lease or financing, or withdrawal without notice. We include projections, opinions, assumptions or estimates for example only, and they may not represent current, past or future performance of the property. You and your tax and legal advisors should conduct your own investigation of the property and transaction.

EXECUTIVE SUMMARY



Sale Price	\$795,000
-------------------	------------------

OFFERING SUMMARY

Building Size:	7,336 SF
Lot Size:	0.63 Acres
Price / SF:	\$108.37
Year Built:	1961
Market:	Detroit
Submarket:	Groesbeck South

PROPERTY OVERVIEW

Uncover the potential of this clean, 7,336 SF building in the Detroit area, perfect for industrial and manufacturing endeavors. Built in 1961, the property boasts a well-maintained structure with convenient features such as outside storage, full air-conditioning, an inspection room, a shop lavatory, two mezzanine storage areas, 2- 3T bridge cranes, good power, and buss duct. With easy access to I-696, this property is strategically positioned for efficiency and productivity.

LOCATION OVERVIEW

Industrial region of Warren, convenient to I-696; also, in the "Green Zone". The location offers convenient access to major transportation routes, including nearby highways and rail lines, making it a prime choice for industrial users. With a strong industrial heritage and a diverse workforce, the area surrounding the property is a magnet for manufacturing and industrial businesses, offering unrivaled potential for growth and success.

23565 SCHOENHERR RD, WARREN, MI 48089 // FOR SALE

INDUSTRIAL DETAILS

Property Type:	Industrial
Building Size:	7,336 SF
Space Available:	-
Shop SF:	6,716 SF
Office SF:	620 SF
Mezzanine SF:	(2) Mezzanines
Occupancy:	Negotiable
Zoning:	M-2
Lot Size:	120' x 290', 0.796 Acres
Parking Spaces:	30
Fenced Yard:	Yes; Side Yard
Trailer Parking:	Yes
Year Built / Renovated:	1961-1969
Construction Type:	Brick & Block
Clear Height:	14' with a 18' Bay
Overhead Doors:	(2) 12' x 12' (1) 16' x 12'
Truckwells/Docks:	No
Cranes:	2-3 Ton Bridge Cranes
Column Spacing:	25'
Underhook:	11'
Power:	800 AMP 240 Volt - 3 Phase
Buss Duct:	Yes
Air Conditioning:	Yes
Heat Type:	Forced Air - Heat & A/C
Lighting:	Fluorescent
Sprinklers:	No
Exhaust Fans:	(2) 36'
Taxes:	\$8,638



P.A. COMMERCIAL
Corporate & Investment Real Estate

John E. De Wald, CPA PRINCIPAL
D: 248.663.0504 | C: 313.510.3777
johnd@pacommercial.com

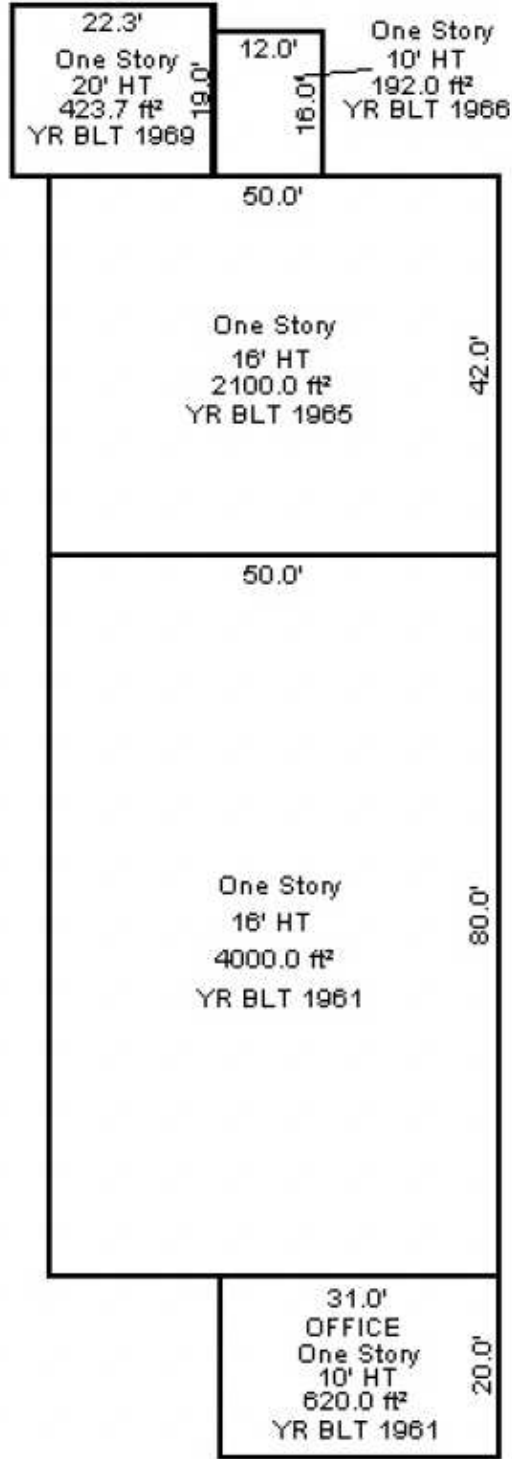
We obtained the information above from sources we believe to be reliable. However, we have not verified its accuracy and make no guarantee, warranty or representation about it. It is submitted subject to the possibility of errors, omissions, change of price, rental or other conditions, prior sale, lease or financing, or withdrawal without notice. We include projections, opinions, assumptions or estimates for example only, and they may not represent current, past or future performance of the property. You and your tax and legal advisors should conduct your own investigation of the property and transaction.

23565 SCHOENHERR RD, WARREN, MI 48089 // FOR SALE

ADDITIONAL PHOTOS

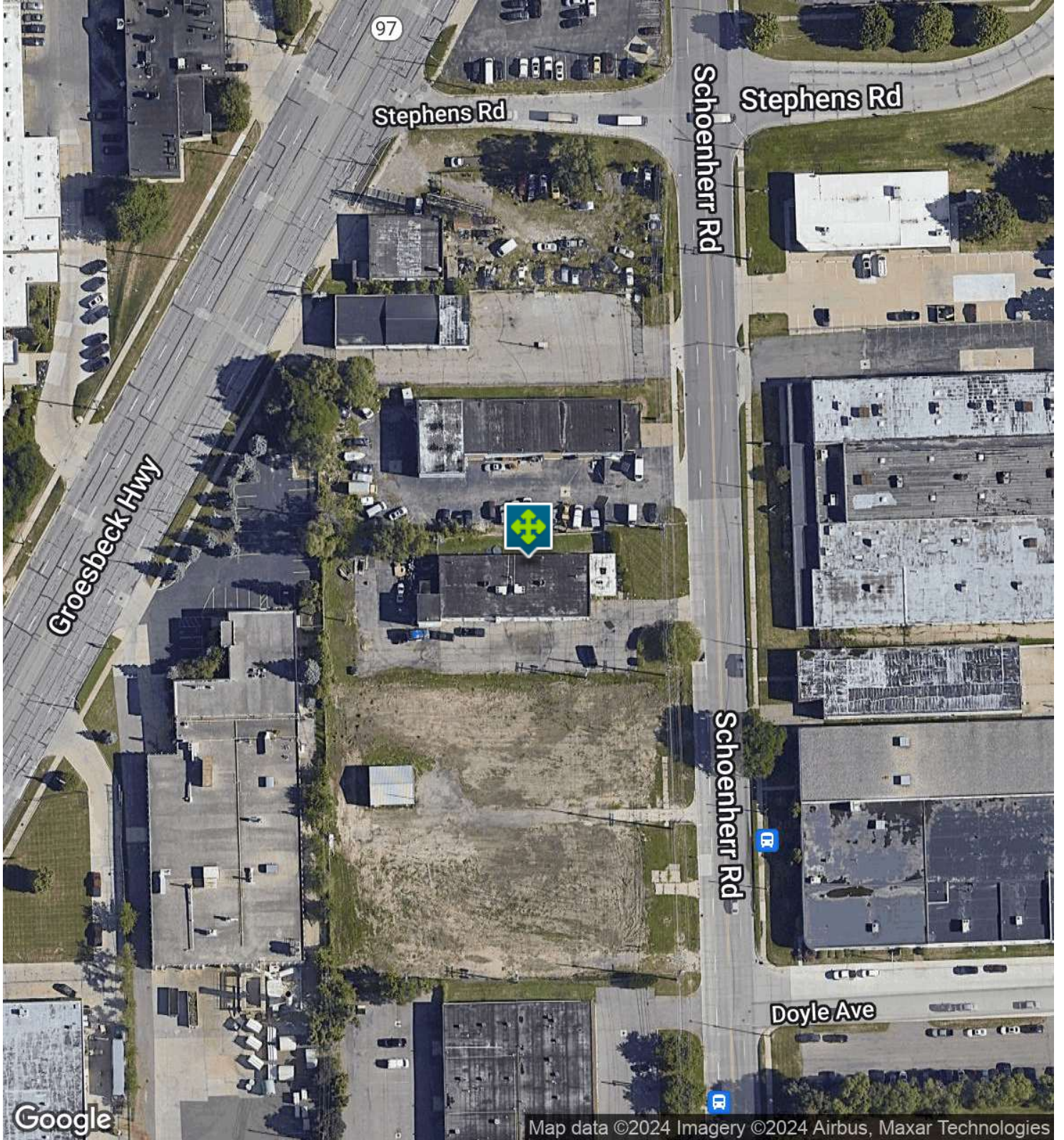


SITE PLANS



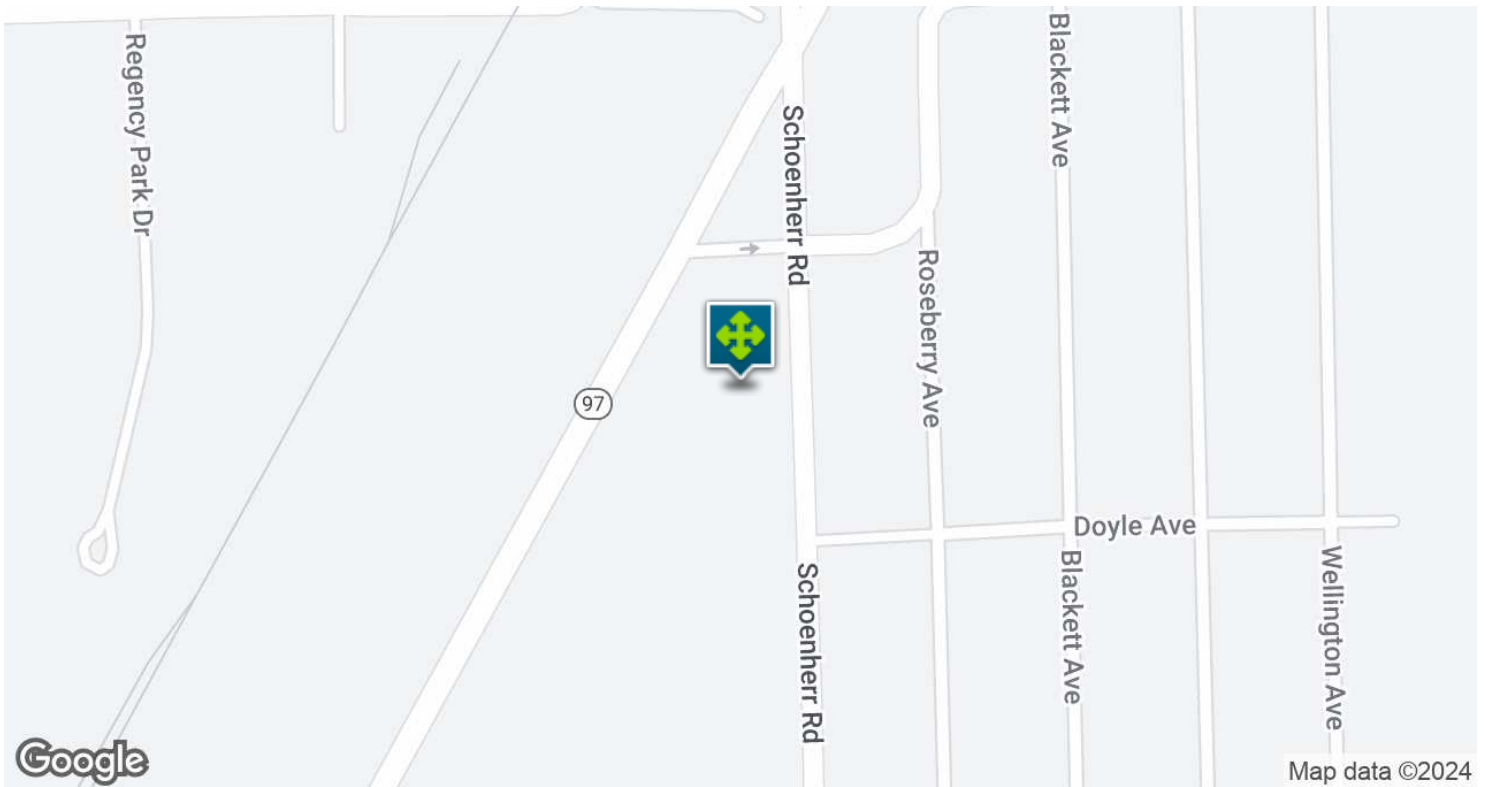
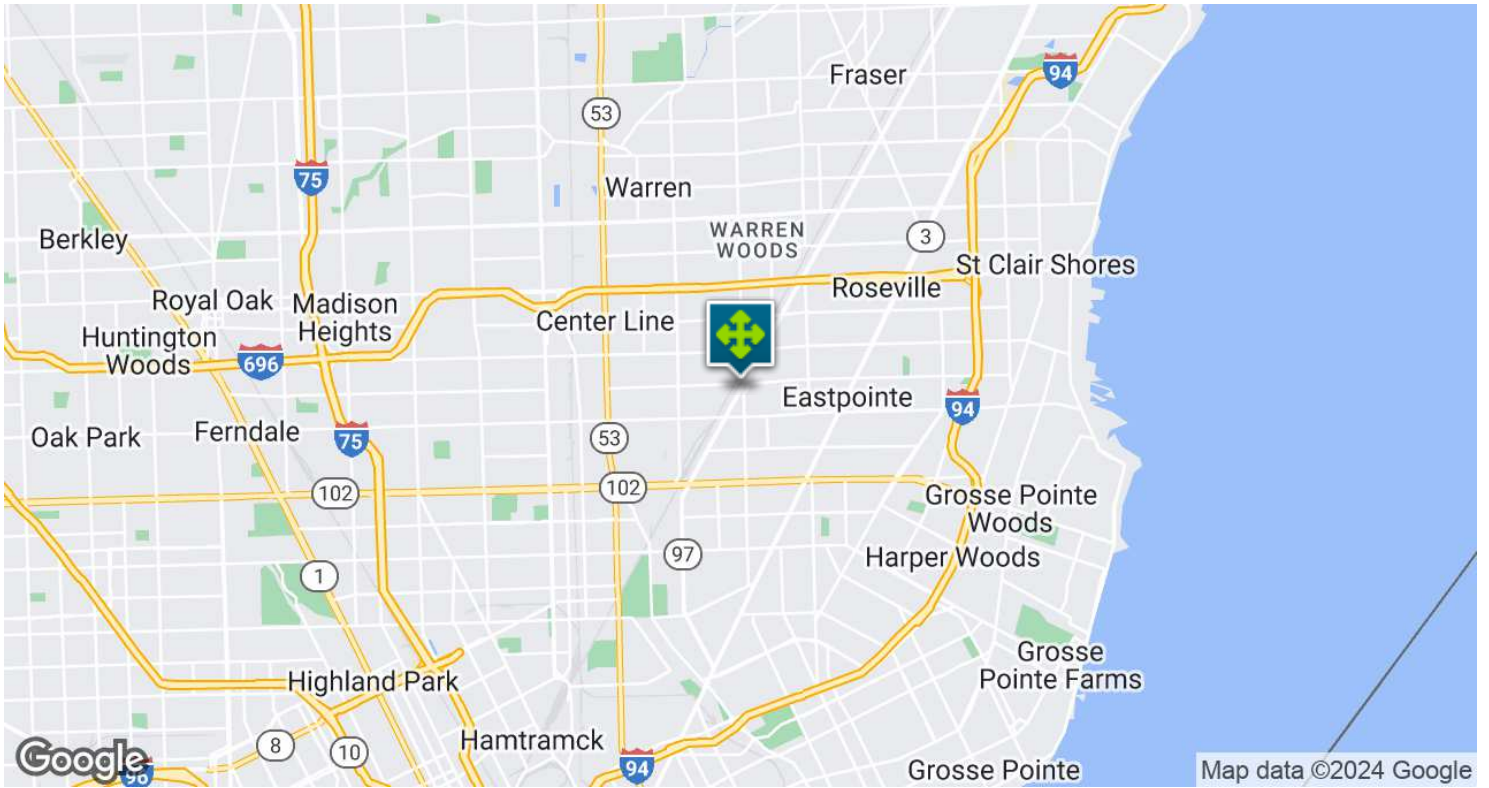
23565 SCHOENHERR RD, WARREN, MI 48089 // FOR SALE

AERIAL MAP

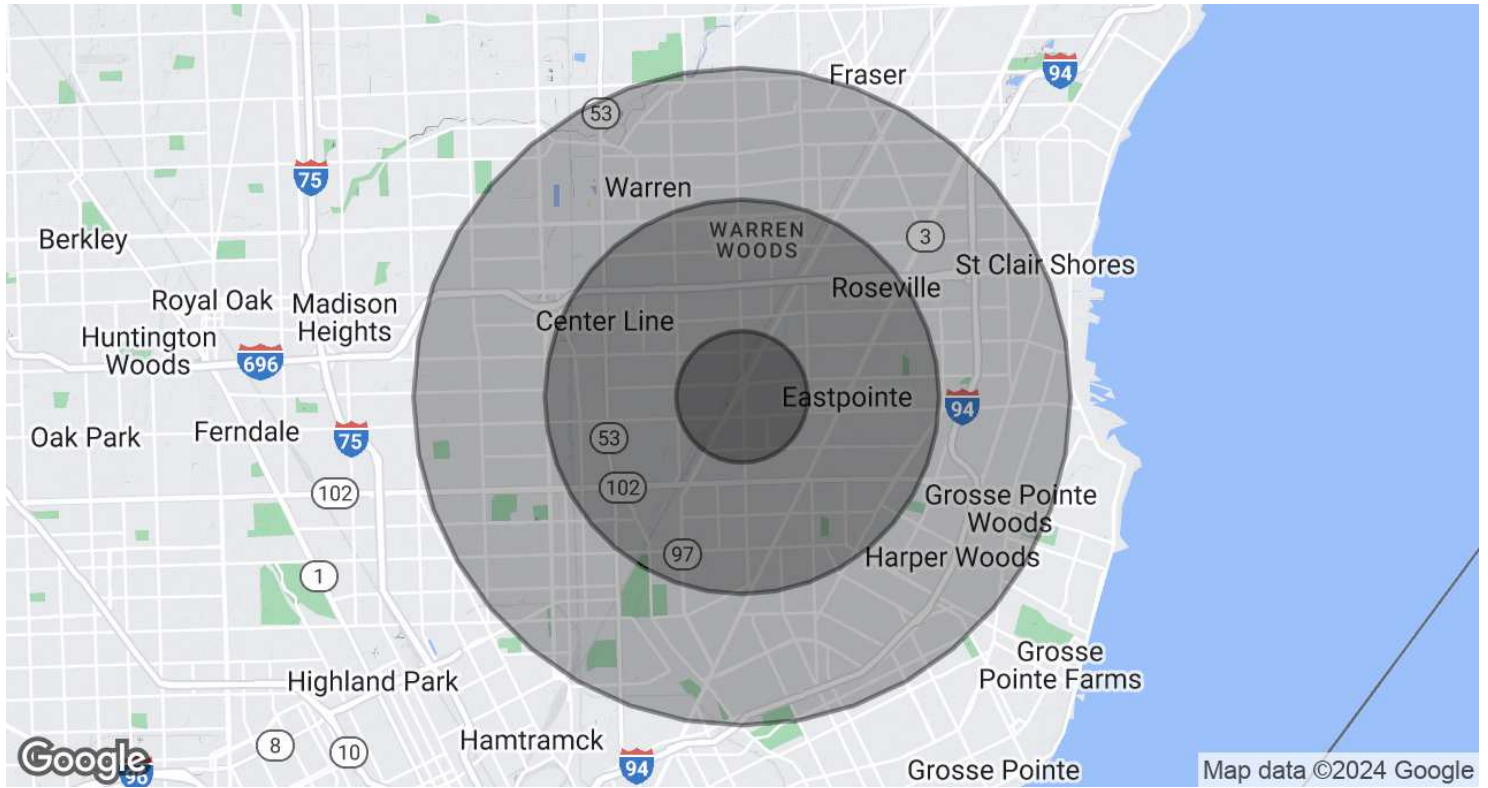


23565 SCHOENHERR RD, WARREN, MI 48089 // FOR SALE

LOCATION MAP



DEMOGRAPHICS MAP & REPORT



POPULATION	1 MILE	3 MILES	5 MILES
Total Population	10,389	133,908	367,156
Average Age	36.5	35.8	37.3
Average Age (Male)	37.0	34.7	35.5
Average Age (Female)	36.4	37.3	39.6
HOUSEHOLDS & INCOME	1 MILE	3 MILES	5 MILES
Total Households	4,311	62,072	167,893
# of Persons per HH	2.4	2.2	2.2
Average HH Income	\$51,214	\$48,215	\$51,335
Average House Value	\$74,803	\$79,014	\$96,719

2020 American Community Survey (ACS)

23565 SCHOENHERR RD, WARREN, MI 48089 // FOR SALE

CONTACT US



FOR MORE INFORMATION, PLEASE CONTACT:



John E. De Wald, CPA
PRINCIPAL

D: 248.663.0504

C: 313.510.3777

johnd@pacommercial.com

P.A. Commercial

26555 Evergreen Road, Suite 1500
Southfield, MI 48076

P: 248.358.0100

F: 248.358.5300

pacommercial.com

Follow Us!

