

OFFICE FOR LEASE

CLEVELAND PARK BUSINESS CENTER



**5741 CLEVELAND STREET, SUITE 240
VIRGINIA BEACH, VA 23462**

For more information, contact:

NICOLE CAMPBELL

Vice President

757 499 0783

nicole.campbell@thalhimer.com



THALHIMER

PROPERTY DETAILS

Available
Space:

1,250 RSF

- Three large offices and/or conference rooms
- Kitchenette / breakroom
- Reception area with counter
- Private restroom
- Server room / Storage closet
- Workroom
- Existing FF&E can be included

Lease Rate:

\$2,500 / month, Net of janitorial

Amenities:

- High ceilings
- Plug & Play
- Signage
- Security system: Elevator lock-out control
- Desirable medical corridor anchored by Sentara Leigh Hospital
- Immediate access to I-264



SUITE 240



Property Size:

24,000 SF | 1.79 Acres

Year Built:

2006

Stories:

Three (3)

Parking:

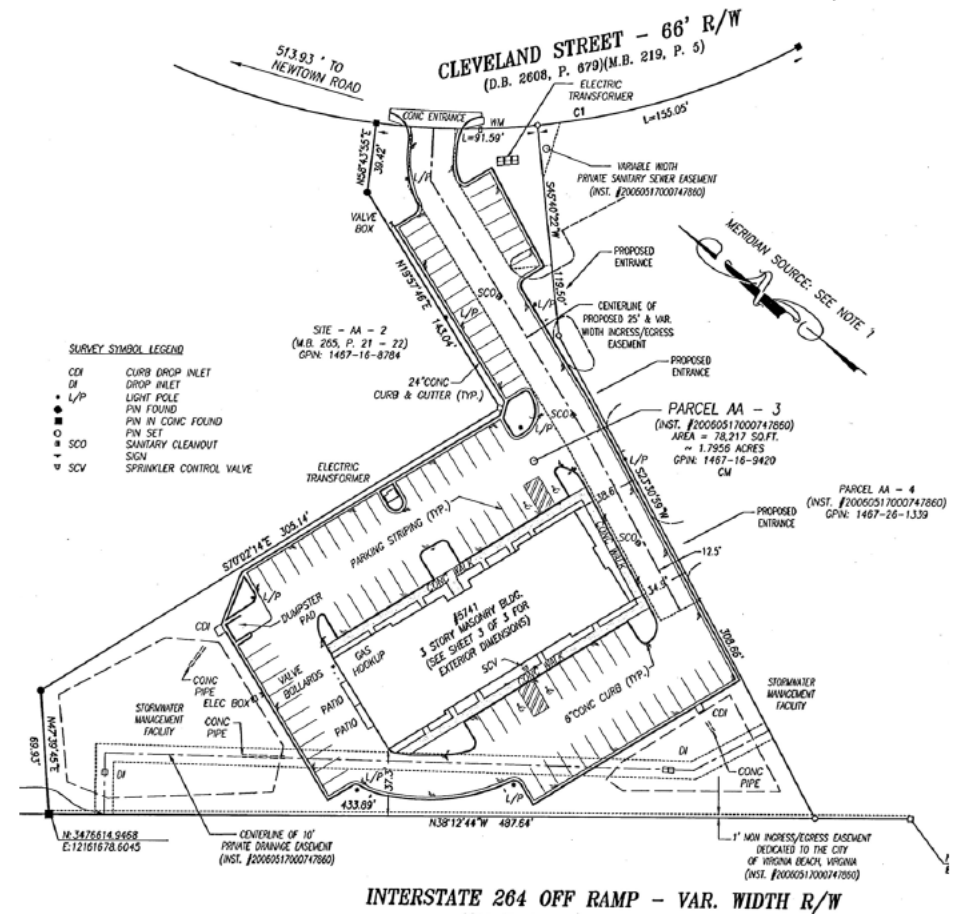
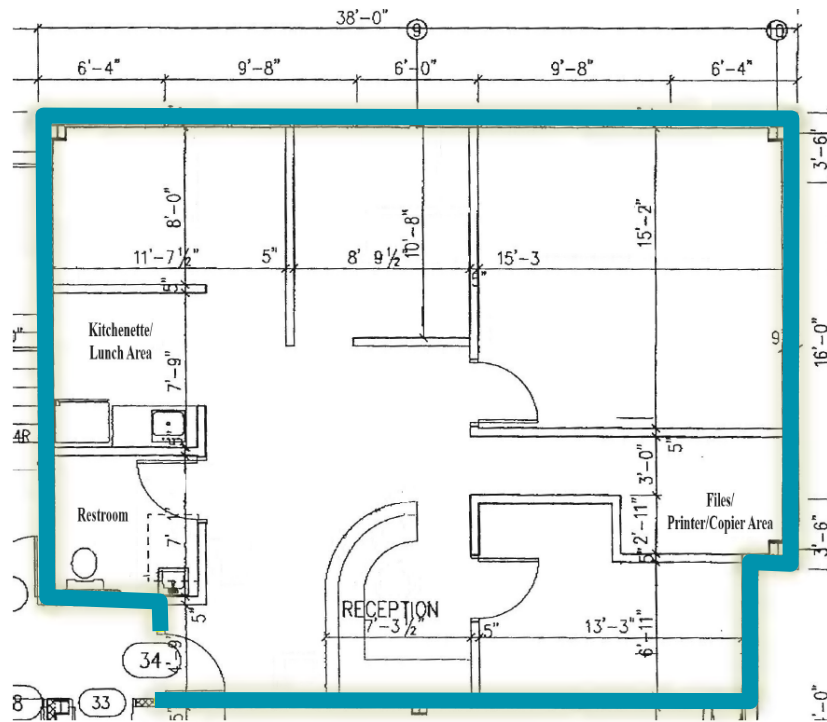
93 surface spaces

Zoning:

O-2



SITE PLAN





Independently Owned and Operated / A Member of the Cushman & Wakefield Alliance

Cushman & Wakefield | Thalhimer © 2025. No warranty or representation, express or implied, is made to the accuracy or completeness of the information contained herein, and same is submitted subject to errors, omissions, change of price, rental or other conditions, withdrawal without notice, and to any special listing conditions imposed by the property owner(s). As applicable, we make no representation as to the condition of the property (or properties) in question.

The Town Center of Virginia Beach
222 Central Park Avenue, Suite 1500
Virginia Beach, Virginia 23462
757 499 2900 | Thalhimer.com