

1700 SUNSET BLVD

ECHO PARK • LOS ANGELES



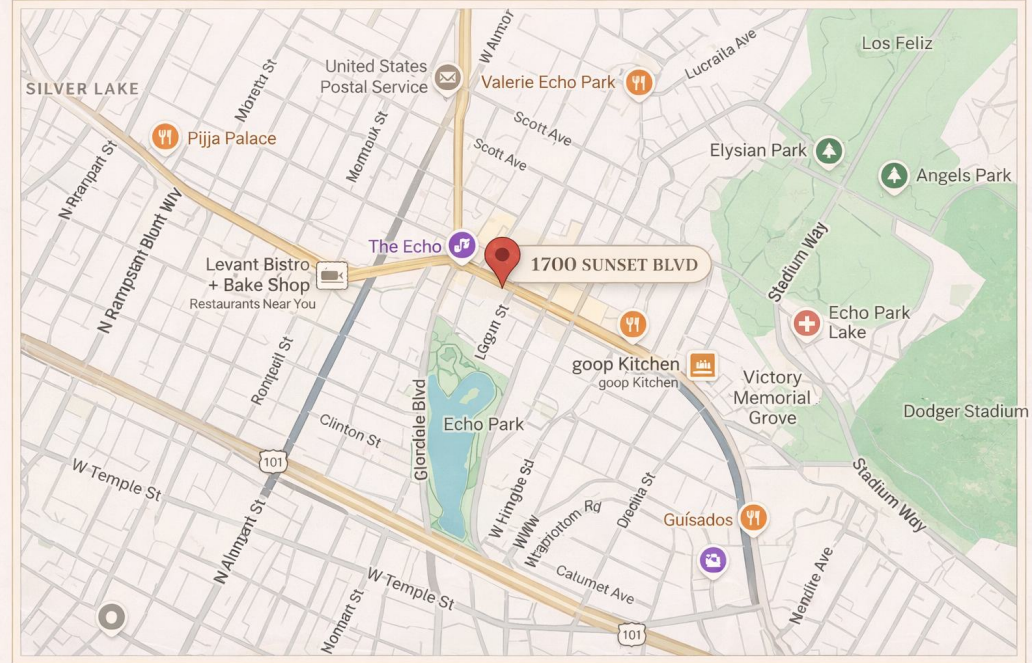
FOR LEASE

RETAIL/CREATIVE OFFICE

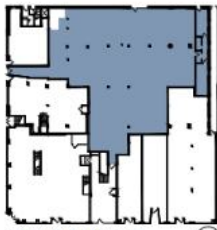
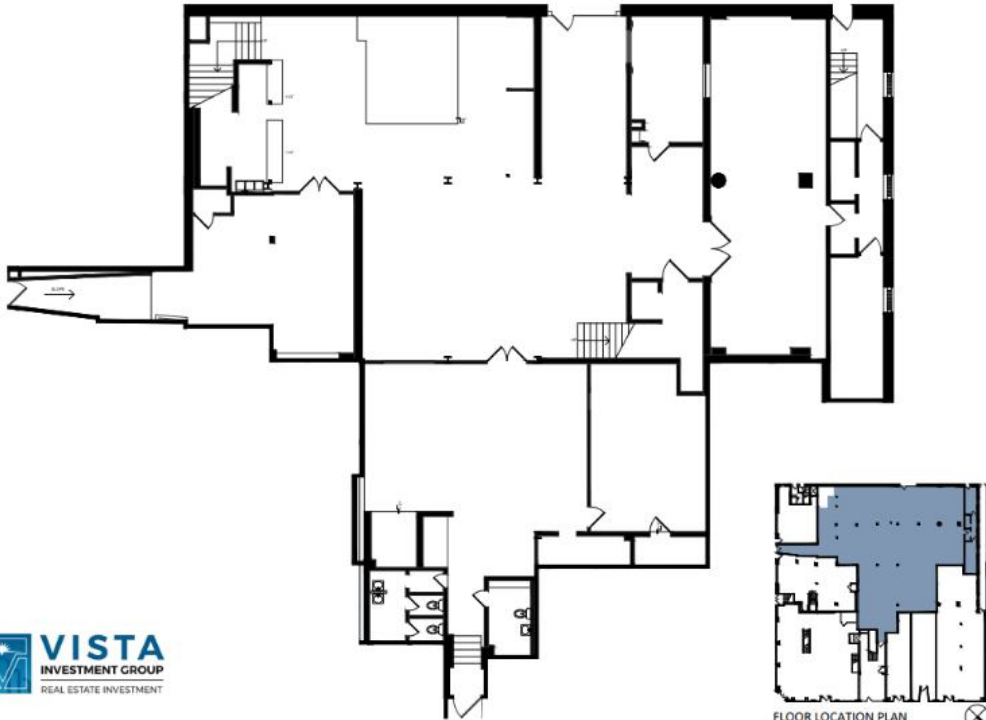
HEART OF ECHO PARK ON SUNSET BLVD

PROPERTY HIGHLIGHTS

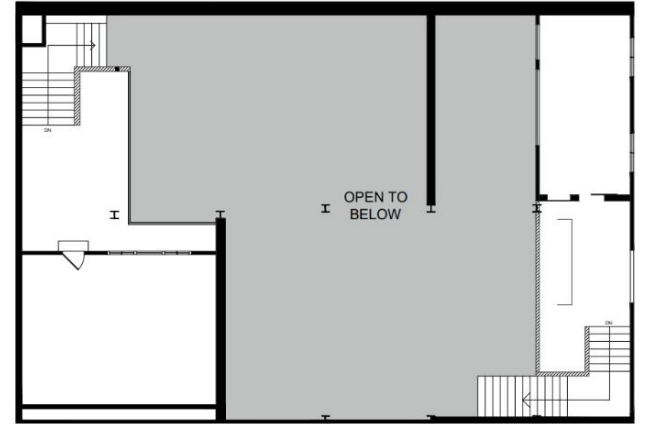
- ✓ In the Heart of Echo Park
- ✓ Retail or Creative Office Space
- ✓ Vanilla Shell Move In Ready
- ✓ Average Household Income: 81,242
- ✓ Historic Building built in 1924
- ✓ Estimated Population 44,677



SITE PLAN

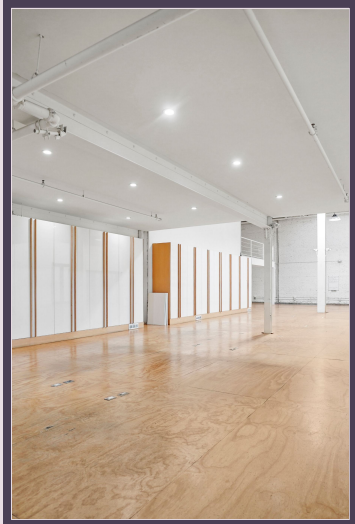
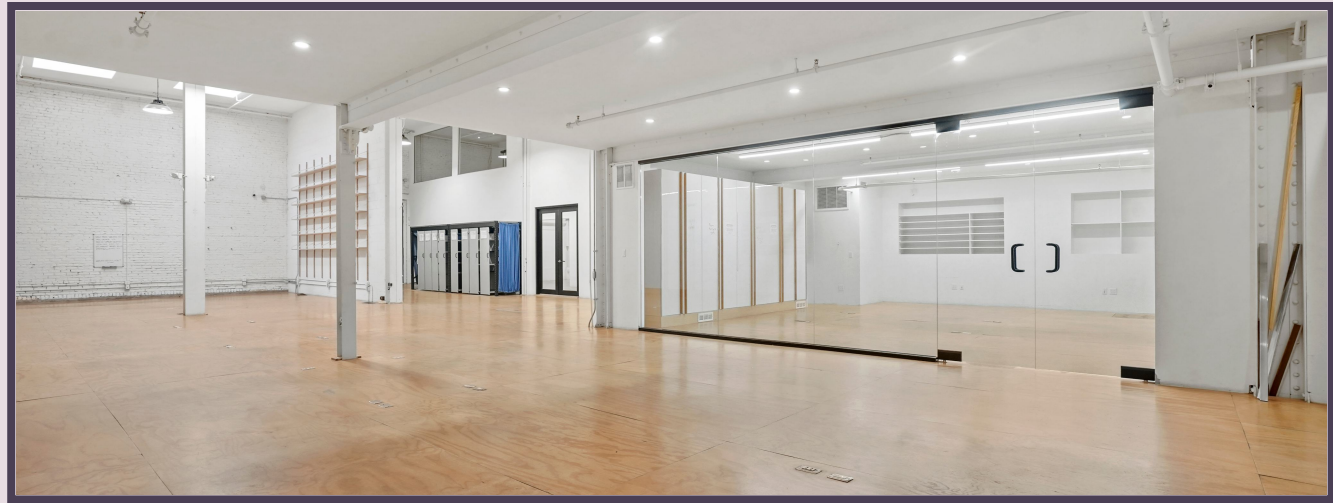


FLOOR LOCATION PLAN
1st FLOOR | SUITE 1161
8,475 RSF



MEZZANINE | SUITE 1161

INTERIOR PHOTOS

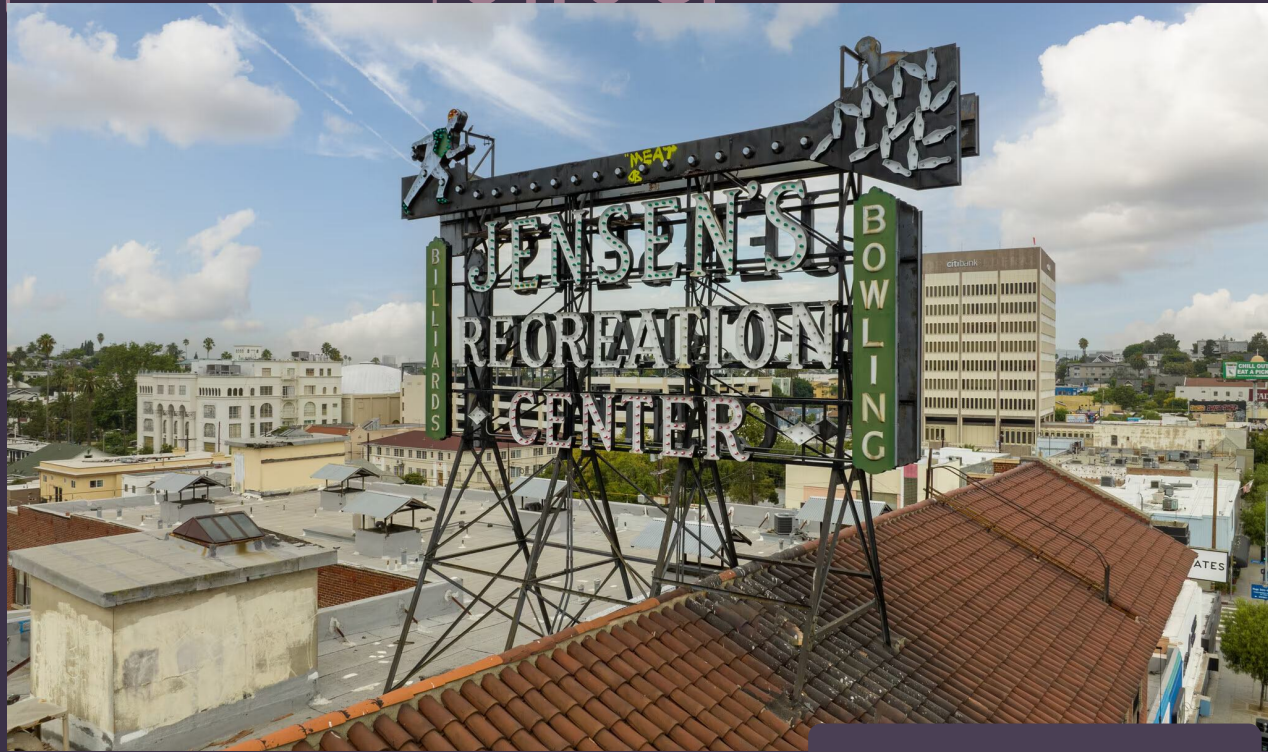


SPACE DETAILS

- ✓ SUITE 1161
- ✓ 8475 SQ/FT
- ✓ ASKING RENT (NEGOTIABLE)
- ✓ LEASE TYPE NNN
- ✓ 2 RESTROOMS - 6 PRIVATE OFFICES
- ✓ CEILING HEIGHTS: 18' CLEAR

AVAILABLE FOR LEASE

8475 SF



82 PUBLIC
PARKING SPACES





1700 SUNSET BLVD

ECHO PARK • LOS ANGELES

IVAN AGUILERA

•
EVKA PARTNERS

iaguilera@evkapartners.com

818.422.9415