

±2.19 ACRES CONTRACTORS/STORAGE YARD

13243 & 13253 WHITTRAM AVE, RANCHO CUCAMONGA



PROPERTY FEATURES

- For Lease: ±2.19 Acres / ±95,400 SF
- Site Dimensions: 221' x 430'
- APN #: 0229-192-02 & 03
- Close Proximity to I-10 & I-15 Freeway
- Great Contractors/Storage Yard
- Fully Fenced & Secured
- Neo Industrial Zoning - Rancho Cucamonga



LEE & ASSOCIATES
COMMERCIAL REAL ESTATE SERVICES
ONTARIO

Don Kazanjian
President

(909)373-2929 | dkazanjian@lee-assoc.com

DRE #00860886

For More Information, please contact:

John Mulrooney
Senior Vice President/Principal

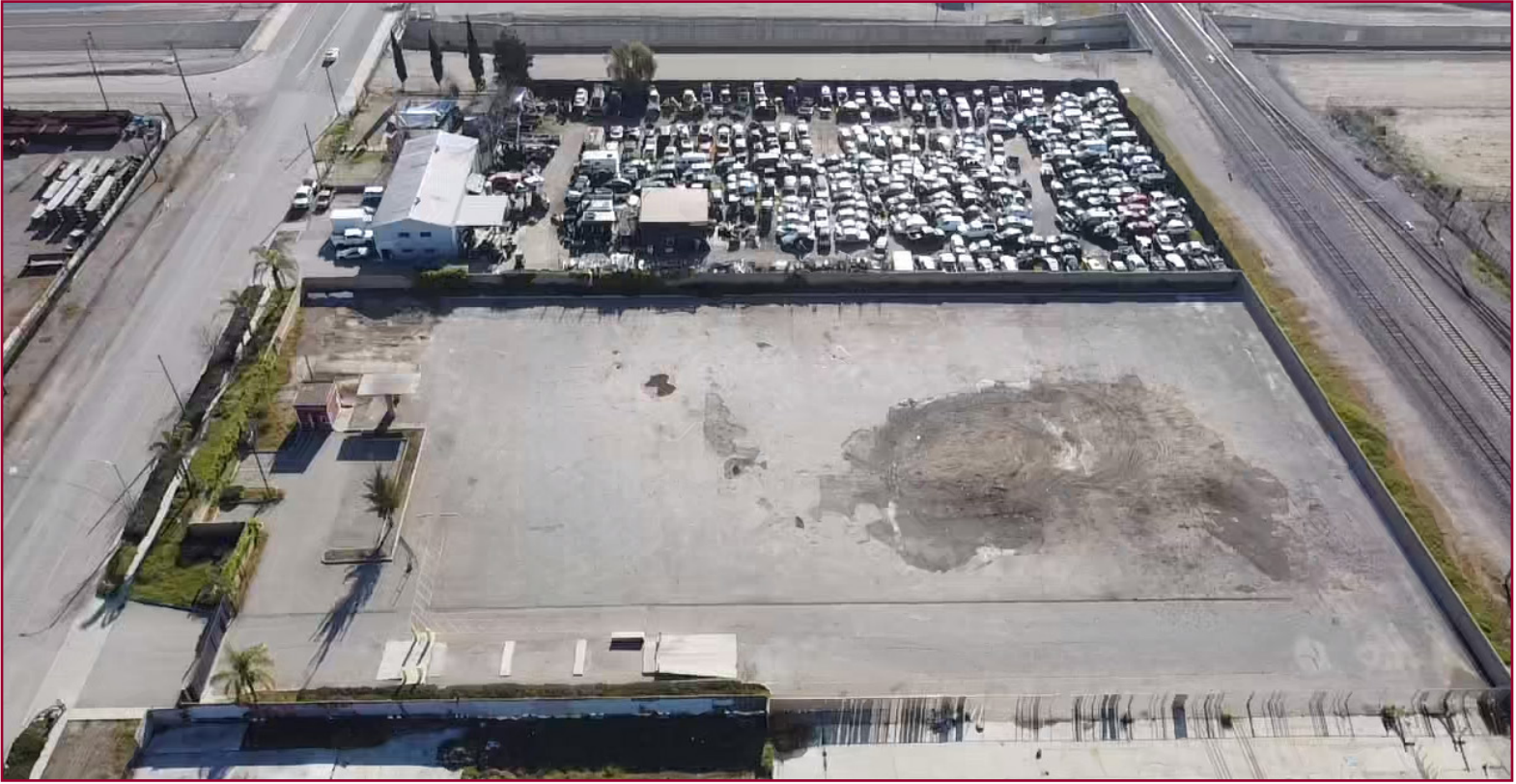
(909)373-2928 | jmulrooney@lee-assoc.com

DRE #00839176

All information furnished regarding property for sale, rental or financing is from sources deemed reliable, but no warranty or representation is made to the accuracy thereof and same is submitted to errors, omissions, change of price, rental or other conditions prior to sale, lease or financing or withdrawal without notice. No liability of any kind is to be imposed on the broker herein.

±2.19 ACRES CONTRACTORS/STORAGE YARD

13243 & 13253 WHITTRAM AVE, RANCHO CUCAMONGA



LEE & ASSOCIATES
COMMERCIAL REAL ESTATE SERVICES
ONTARIO

Don Kazanjian
President

(909)373-2929 | dkazanjian@lee-assoc.com

DRE #00860886

For More Information, please contact:

John Mulrooney
Senior Vice President/Principal

(909)373-2928 | jmulrooney@lee-assoc.com

DRE #00839176

All information furnished regarding property for sale, rental or financing is from sources deemed reliable, but no warranty or representation is made to the accuracy thereof and same is submitted to errors, omissions, change of price, rental or other conditions prior to sale, lease or financing or withdrawal without notice. No liability of any kind is to be imposed on the broker herein.