

 **KORE** co-working

**SHORT TERM  
LEASES  
AVAILABLE**

# KORE 9250

9250 E COSTILLA AVE, GREENWOOD VILLAGE, CO

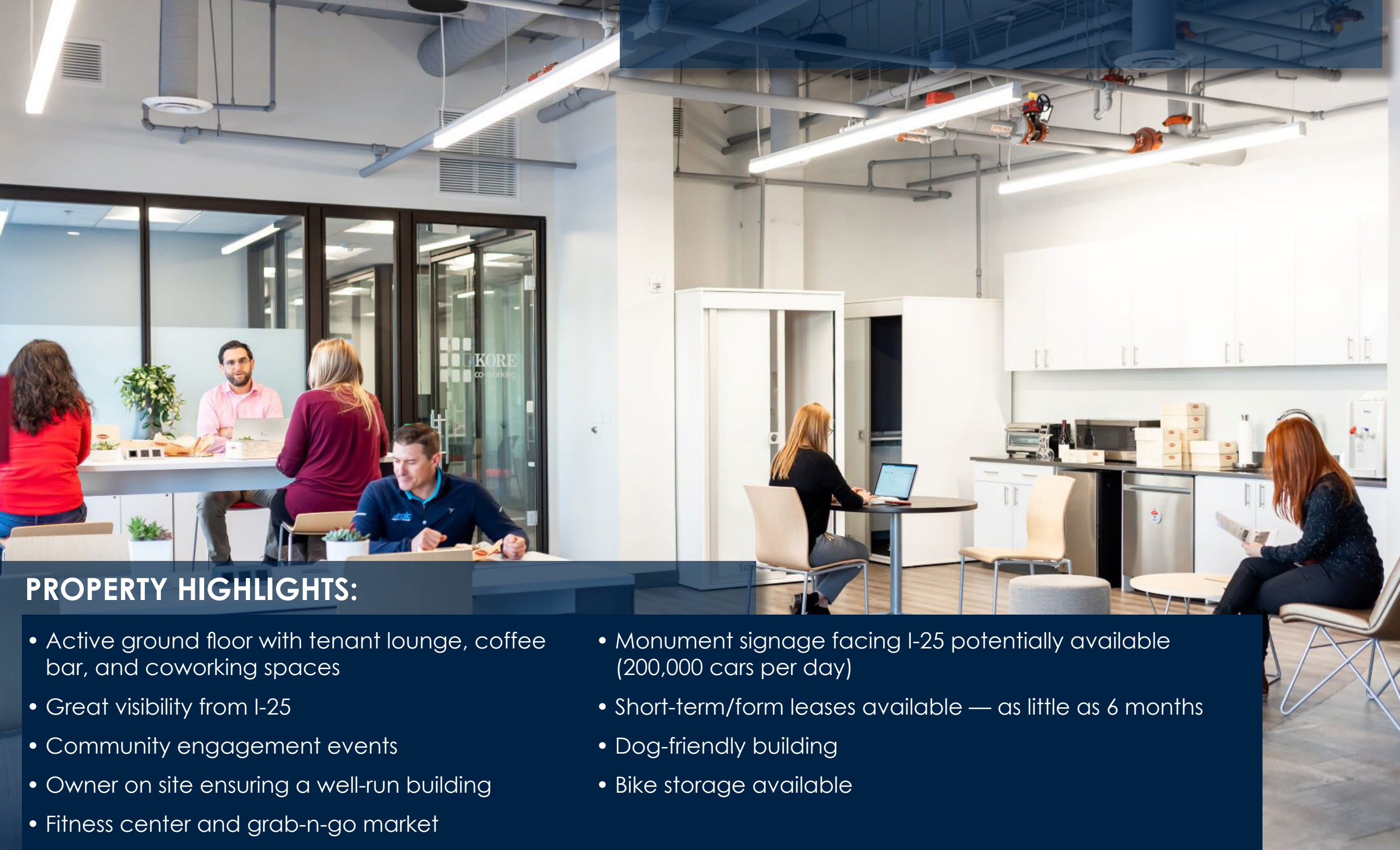
**OFFICE OR MEDICAL**

For leasing information contact:

Michelle Gertzman | 720.743.6399  
mgertzman@premisescommercial.com

Matt Smith | 303.996.8460  
msmith@premisescommercial.com

  
**PREMISES**  
PREMISES COMMERCIAL REAL ESTATE LLC



## PROPERTY HIGHLIGHTS:

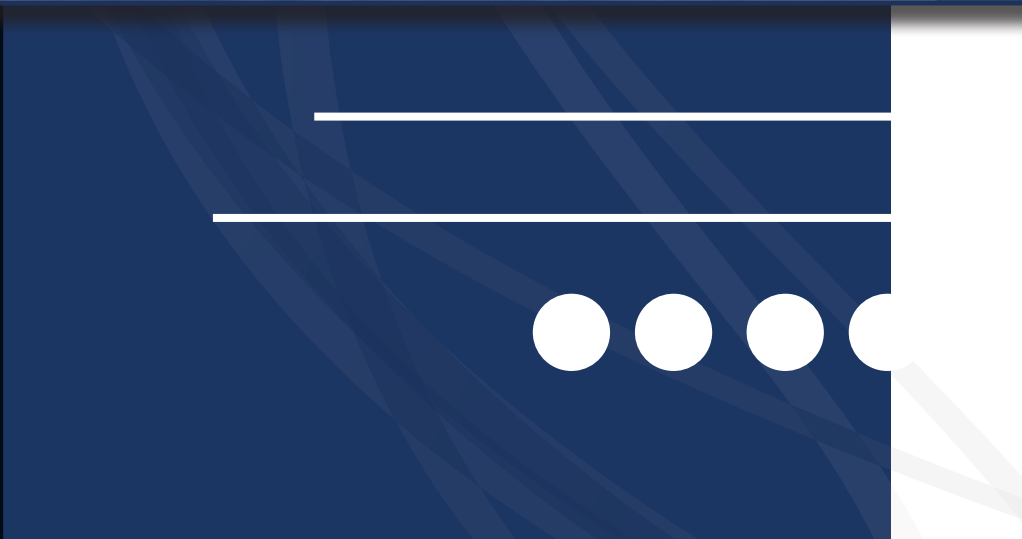
- Active ground floor with tenant lounge, coffee bar, and coworking spaces
- Great visibility from I-25
- Community engagement events
- Owner on site ensuring a well-run building
- Fitness center and grab-n-go market
- Monument signage facing I-25 potentially available (200,000 cars per day)
- Short-term/form leases available — as little as 6 months
- Dog-friendly building
- Bike storage available

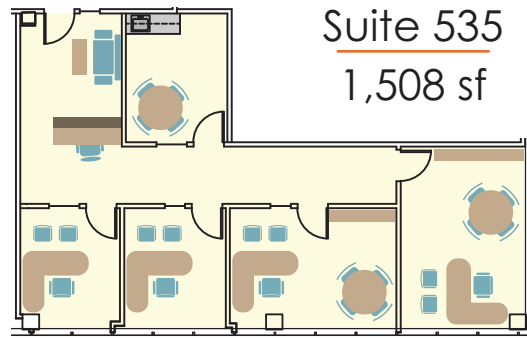


CLOSE TO SHOPPING,  
RESTAURANTS & PARKS

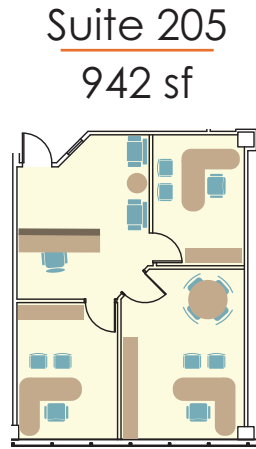
**KORE**  
**9250**



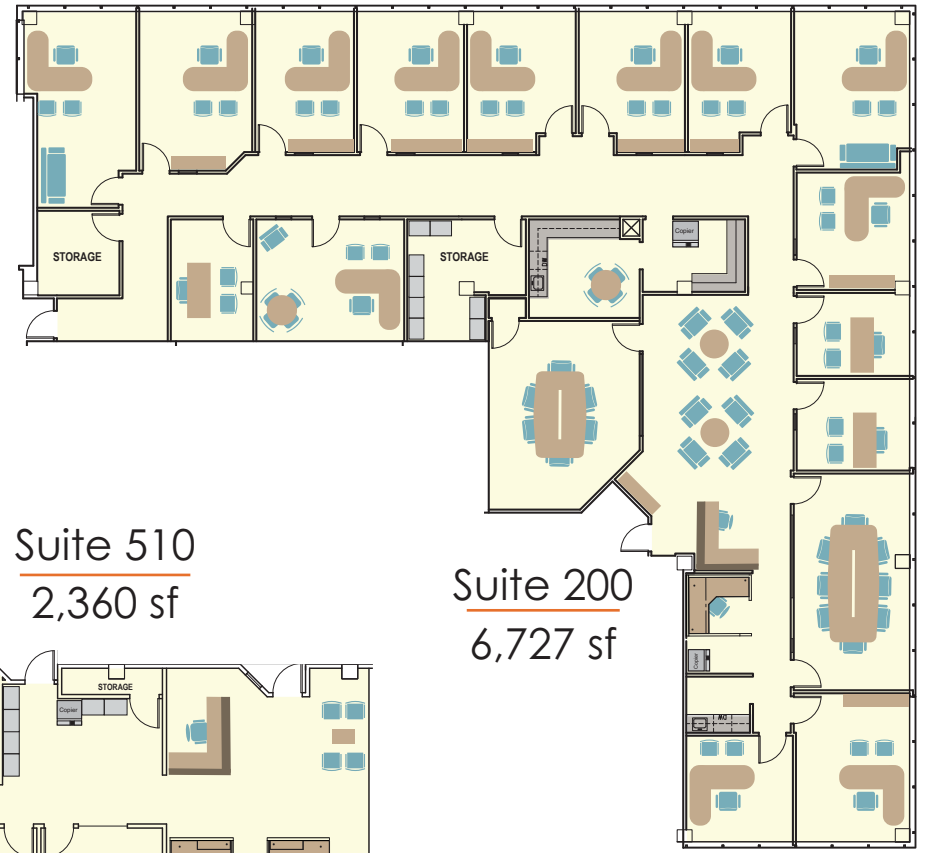




Suite 535  
1,508 sf

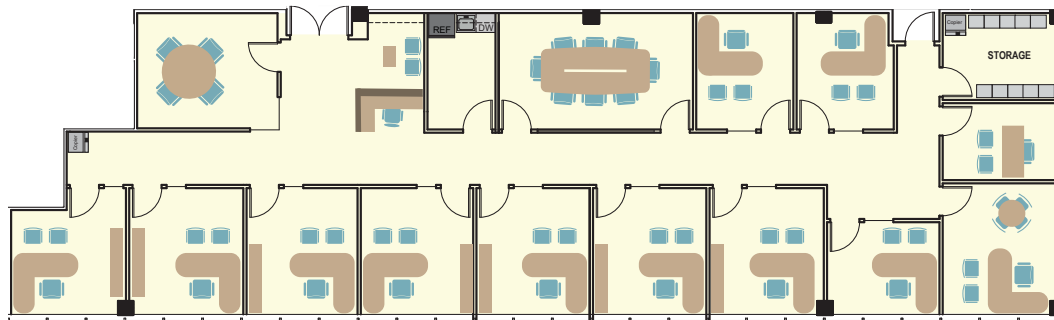


Suite 205  
942 sf

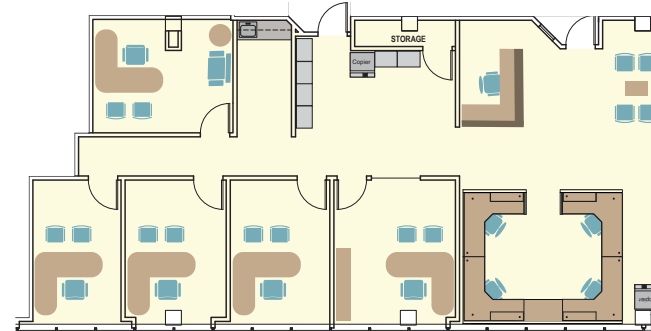


Suite 200  
6,727 sf

Suite 305  
4,189 sf



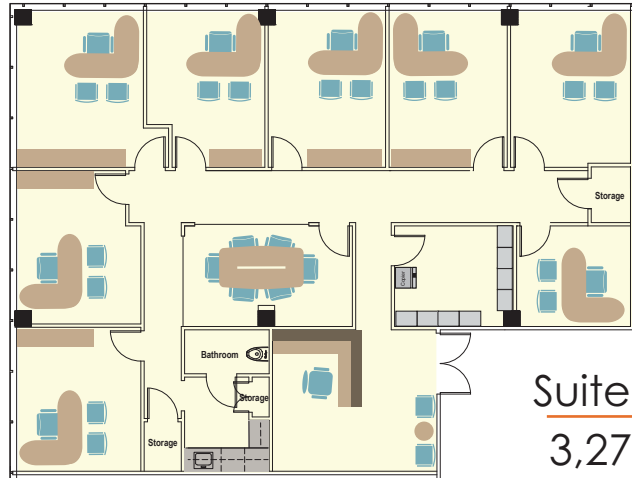
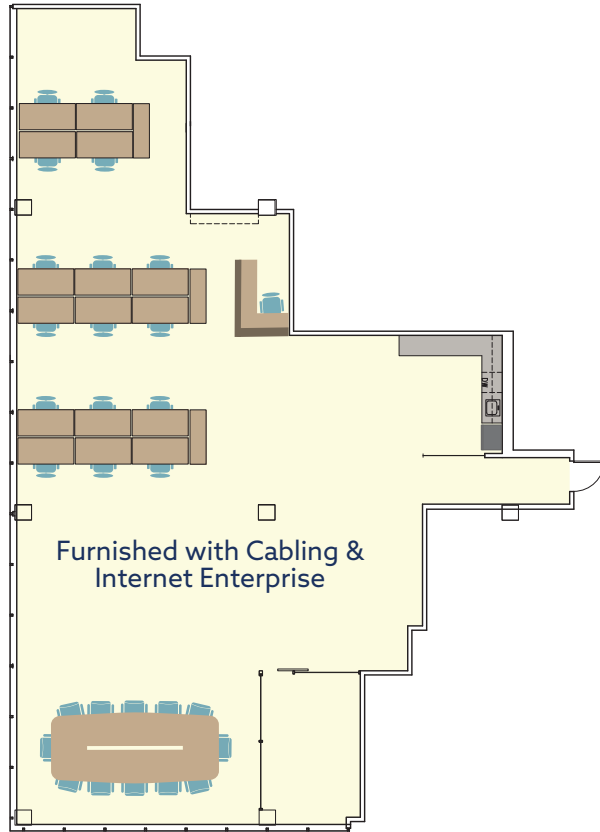
Suite 510  
2,360 sf



## AVAILABLE SUITES

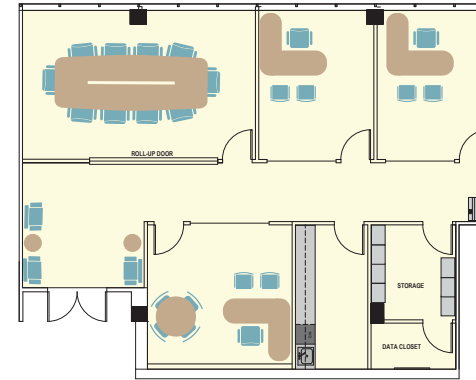


Suite 505  
3,330 sf

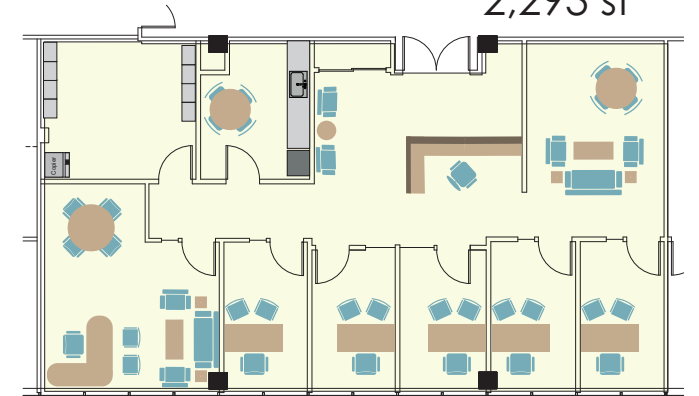


Suite 600  
3,276 sf

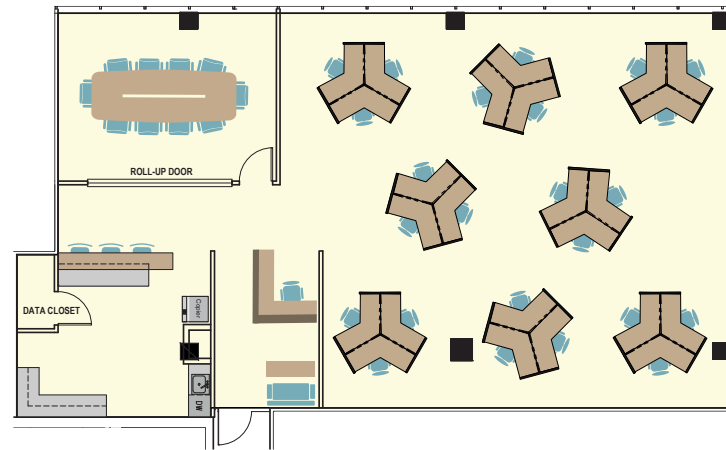
Suite 620  
2,007 sf



Suite 655  
2,293 sf



Suite 650  
2,719 sf



For leasing information contact:

Michelle Gertzman | 720.743.6399  
mgertzman@premisescommercial.com

Matt Smith | 303.996.8460  
msmith@premisescommercial.com

**AVAILABLE SUITES**