



PROPERTY DESCRIPTION

Warehouse/office unit available for lease. This mixed-use structure consists of commercial shop space on the first floor and residential apartments above. The property is located on +/-0.80 acres and zoned KC-BG.

The building is conveniently located on the NW corner of W Denney's Road and Bush Drive and in close proximity to Route 1 and Route 13.

PROPERTY DETAILS

- **Building B:** 2,052 SF
- **Lease Rate:** \$1,800/month + utilities
- Private parking lot
- Signage available

| DEMOGRAPHICS | 1 MILE | 3 MILES | 5 MILES |
|-------------------|----------|----------|----------|
| Total Population | 2,912 | 24,909 | 56,531 |
| Total Households | 929 | 9,837 | 23,597 |
| Average HH Income | \$65,169 | \$65,010 | \$63,424 |
| Median Age | 35.7 | 39.0 | 38.7 |



For More Information, Contact:

Alicia Fox
alicia@dsmre.com
302.283.1800 Office
302.419.5477 Cell

DSM Commercial
Real Estate Services
3304 Old Capitol Trail
Wilmington, DE 19808
dsmre.com



5921 W. Denneys Road
Dover, DE 19901

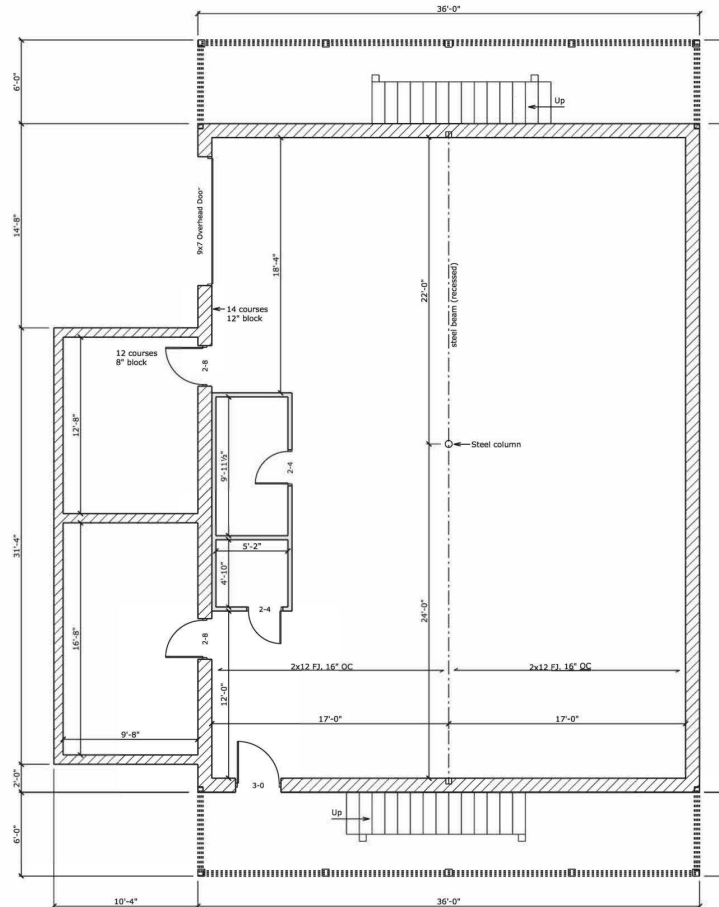
WAREHOUSE/OFFICE PROPERTY FOR LEASE



For More Information, Contact:

Alicia Fox
alicia@dsmre.com
302.283.1800 Office
302.419.5477 Cell

DSM Commercial
Real Estate Services
3304 Old Capitol Trail
Wilmington, DE 19808
dsmre.com



Building B

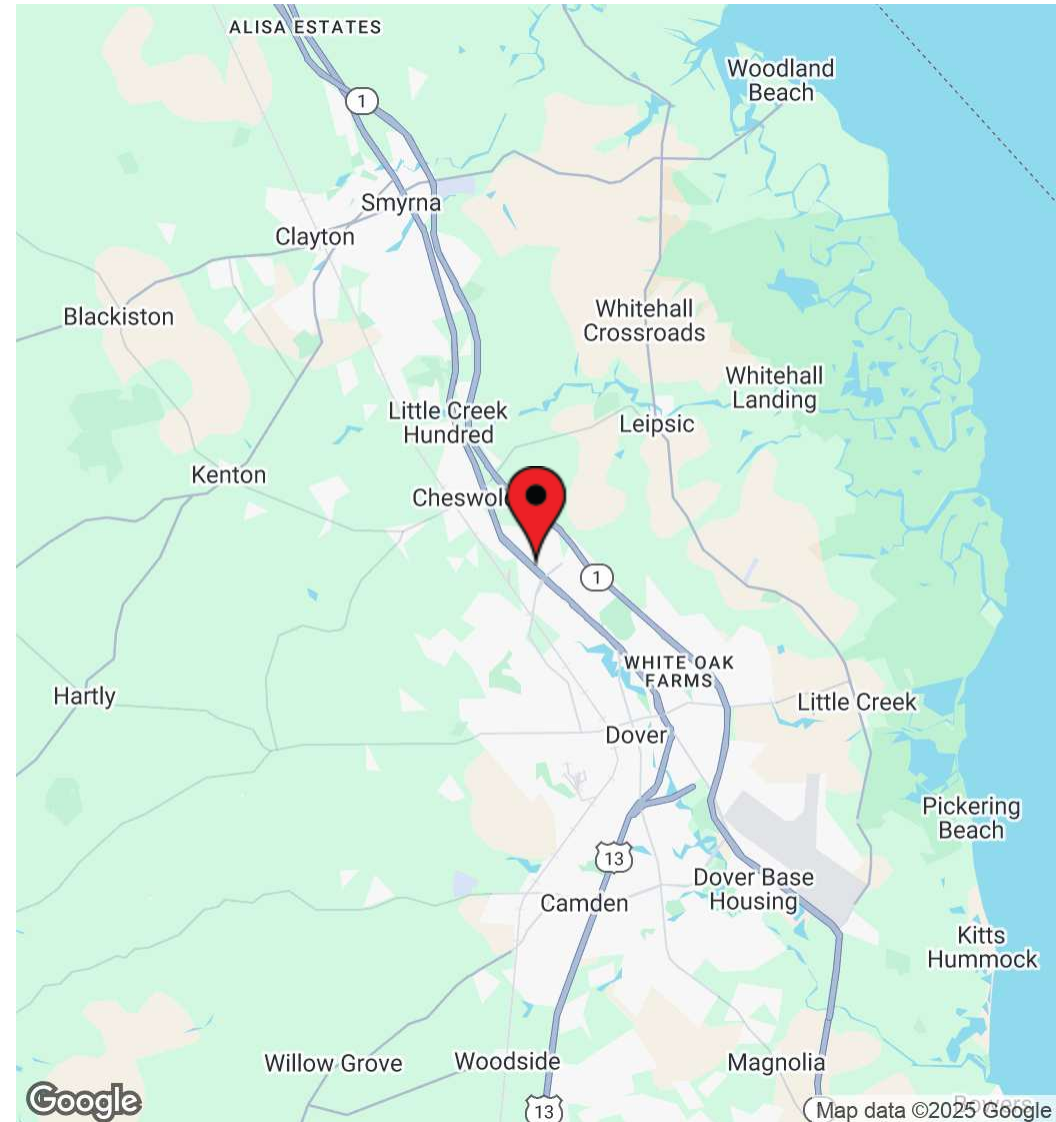
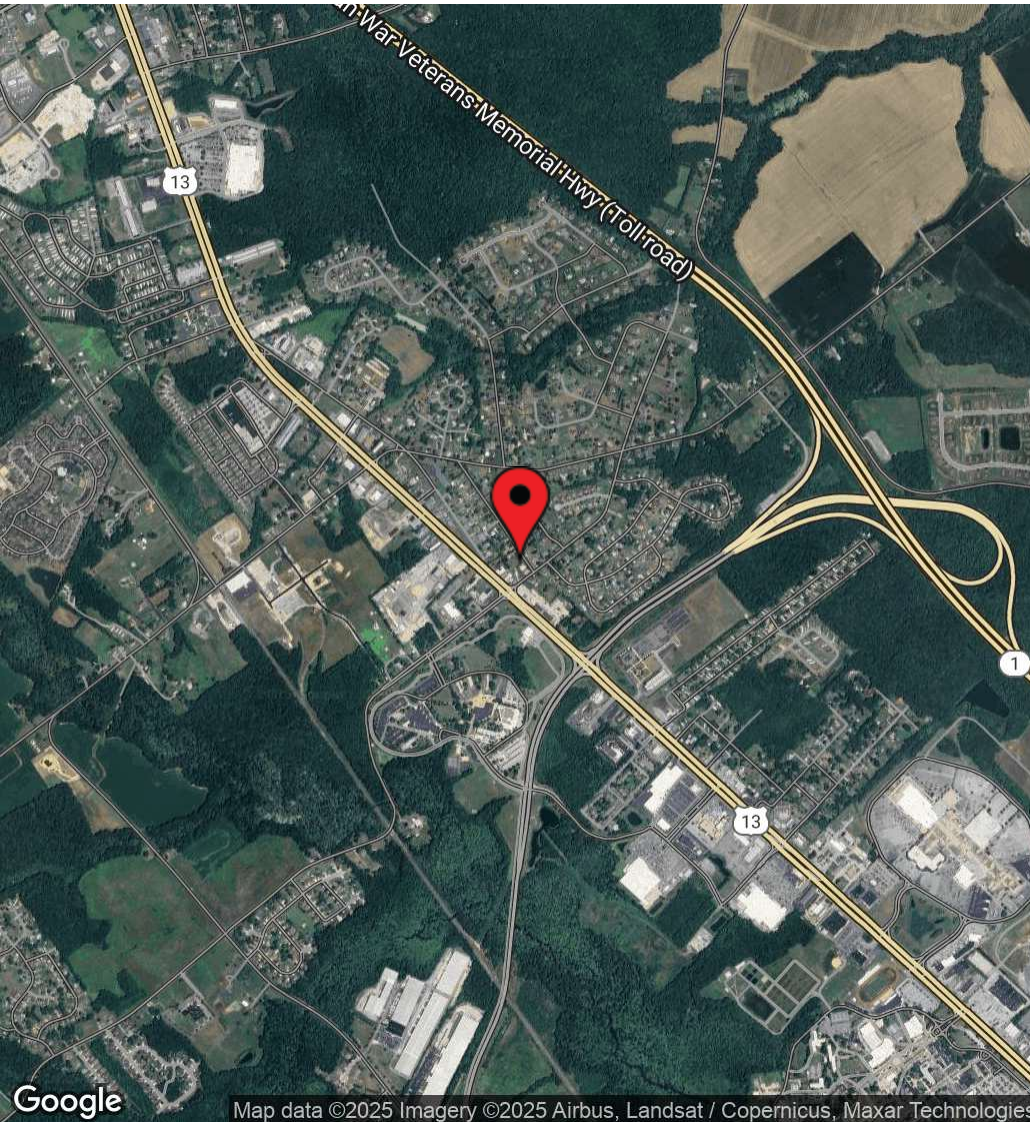
For More Information, Contact:

Alicia Fox
alicia@dsmre.com
302.283.1800 Office
302.419.5477 Cell

DSM Commercial
Real Estate Services
3304 Old Capitol Trail
Wilmington, DE 19808
dsmre.com

5921 W. Denneys Road
Dover, DE 19901

WAREHOUSE/OFFICE PROPERTY FOR LEASE



For More Information, Contact:

Alicia Fox
alicia@dsmre.com
302.283.1800 Office
302.419.5477 Cell

DSM Commercial
Real Estate Services
3304 Old Capitol Trail
Wilmington, DE 19808
dsmre.com