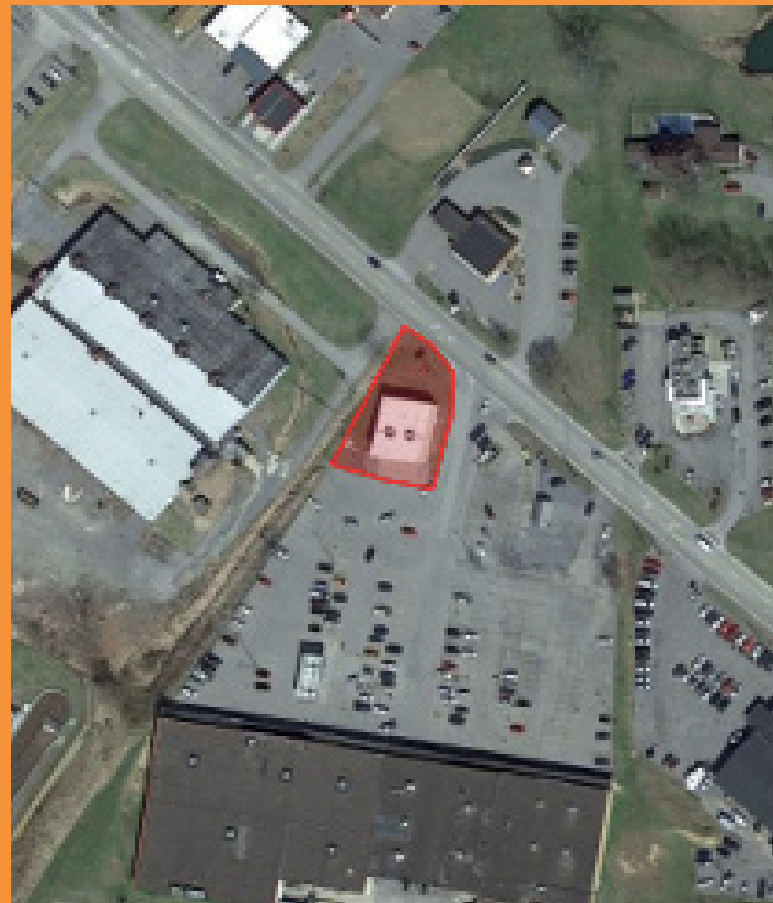


12 RAINBOW PLAZA MANNINGTON, WV 26582



PROPERTY HIGHLIGHTS:

- 3,000 SF free-standing building in parking lot
- Co-tenants: Shop 'N Save, Family Dollar, CVS, & Advance Auto Parts

DEMOGRAPHICS:

	Population	Avg. Income	Households
1 mile radius	189	\$55,908	75
5 mile radius	1,200	\$55,009	479
10 mile radius	10,304	\$55,320	4,117

TRAFFIC COUNTS:

E MAIN ST: 8,855 ADT

