

551 W LANCASTER AVE, SUITE 400

HAVERFORD, PA 19041


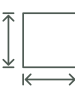






Sublease on the Main Line
Move-in ready



REPRESENTED BY
THE FLYNN COMPANY

AVAILABLE FOR SUBLEASE

PROPERTY HIGHLIGHTS

-  • 29,833 SF building
-  • 3,453 SF on 4th floor available
-  • Move in ready
-  • Mostly open floor plan
-  • Ample parking on site
-  • Elevator served
-  • Monument signage available
-  • Starbucks on-site

COLIN FLYNN, SIOR.
CFLYNN@FLYNNCO.COM
215-561-6565 X 123

BEN CONWAY
BCONWAY@FLYNNCO.COM
215-561-6565 X 124



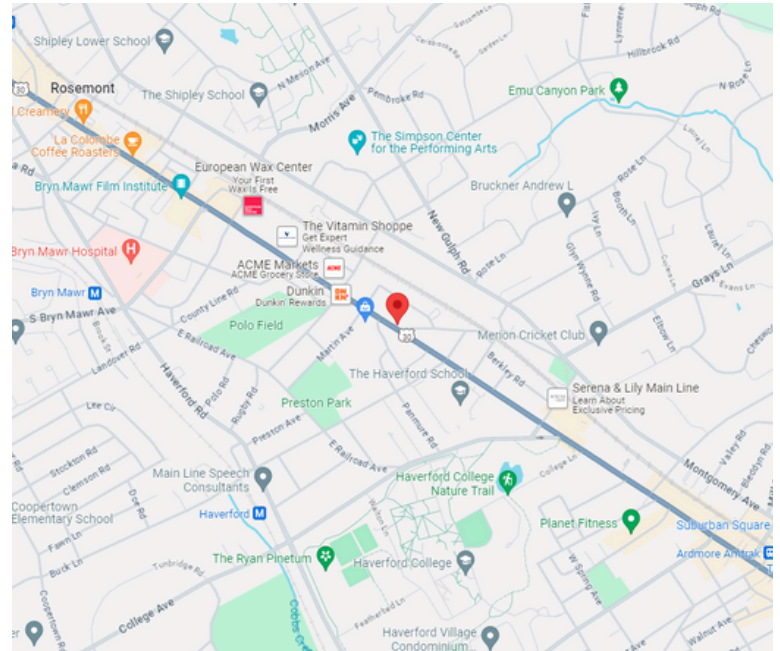
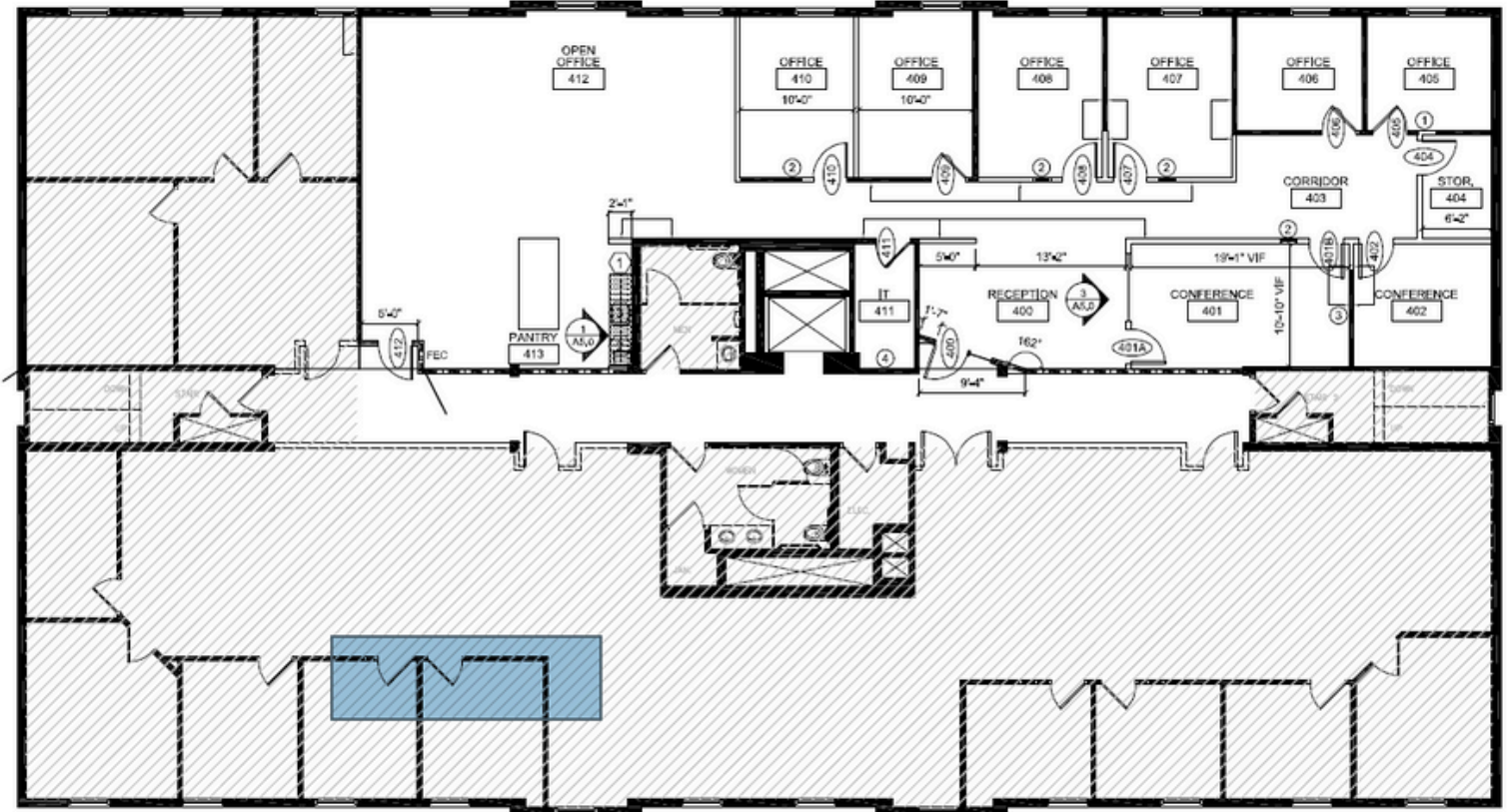
THE FLYNN COMPANY

WWW.FLYNNCO.COM | 1621 WOOD STREET, PHILADELPHIA, PA 19103 | 215.561.6565

Property Photo's



Floor Plan



FOR MORE INFORMATION CONTACT:

COLIN FLYNN, SIOR
 CFLYNN@FLYNNCO.COM
 215-561-6565 X 123

BEN CONWAY
 BCONWAY@FLYNNCO.COM
 215-561-6565 X 124