

1042 N. Crystal Ave.

Benton Harbor, MI



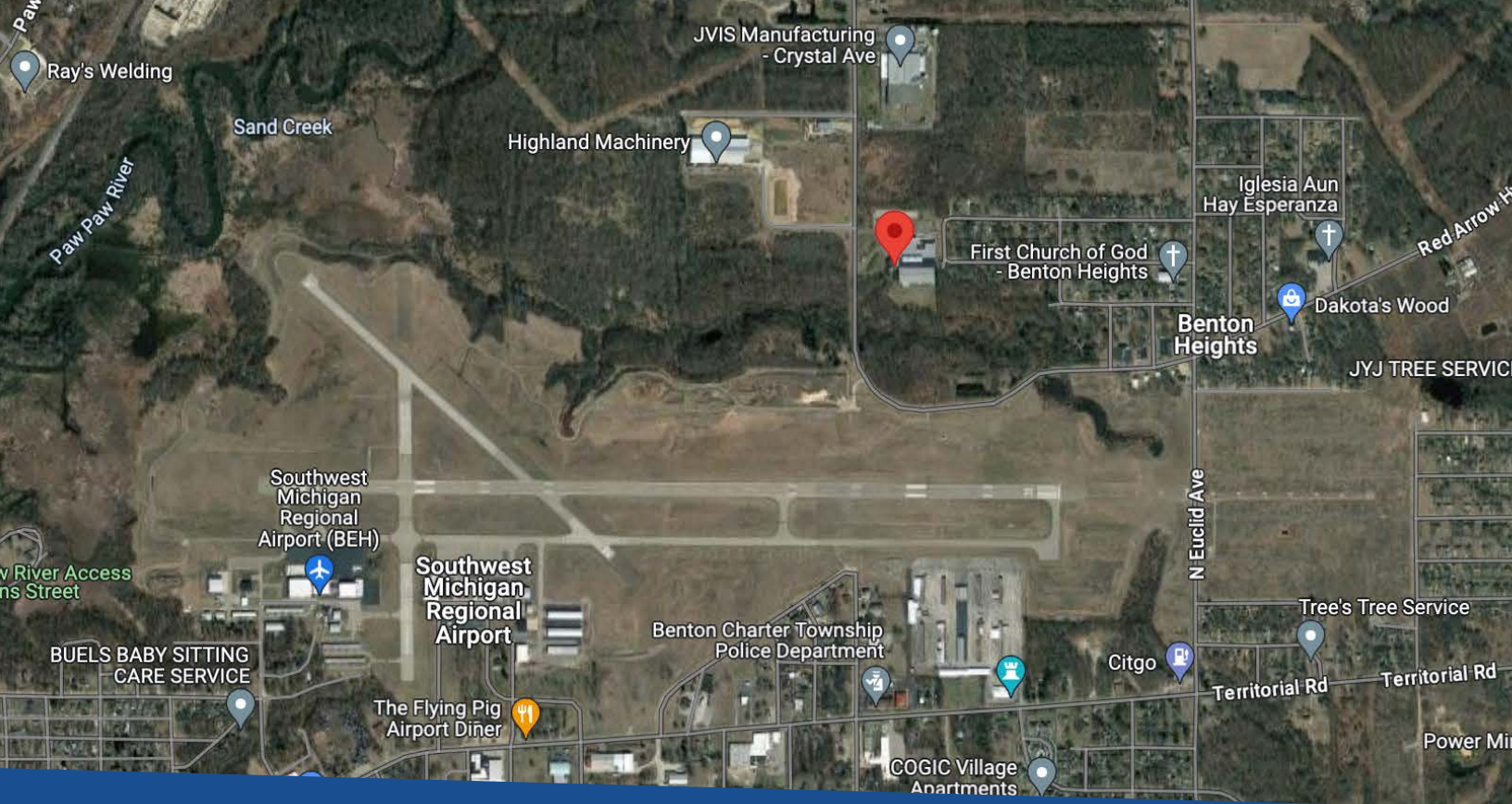
Matt Conlee | Director of Leasing & Development

📞 574.333.5344 ✉️ matt@clarklogic.com

Jamie Clark | President

📞 269.207.3081 ✉️ jamie@clarklogic.com

99,400 SF



Property Highlights

Located 4 miles from I-94, this is a great opportunity for a turnkey manufacturing user in Southwest Michigan.

Quality built 93,000 SF, class B Industrial building with 6,400 SF of office space on 10.8 acres in Benton Harbor. There is an additional 7,275 SF of dock space under roof.

The building offers 19-20 ft clear ceiling height, seven loading docks and four grade level doors, a dedicated air compressor room, 3000KVA with full plant 480V distribution, and employee lunch area.

The finished office area features private offices, a conference room, an open office area, and a kitchenette.

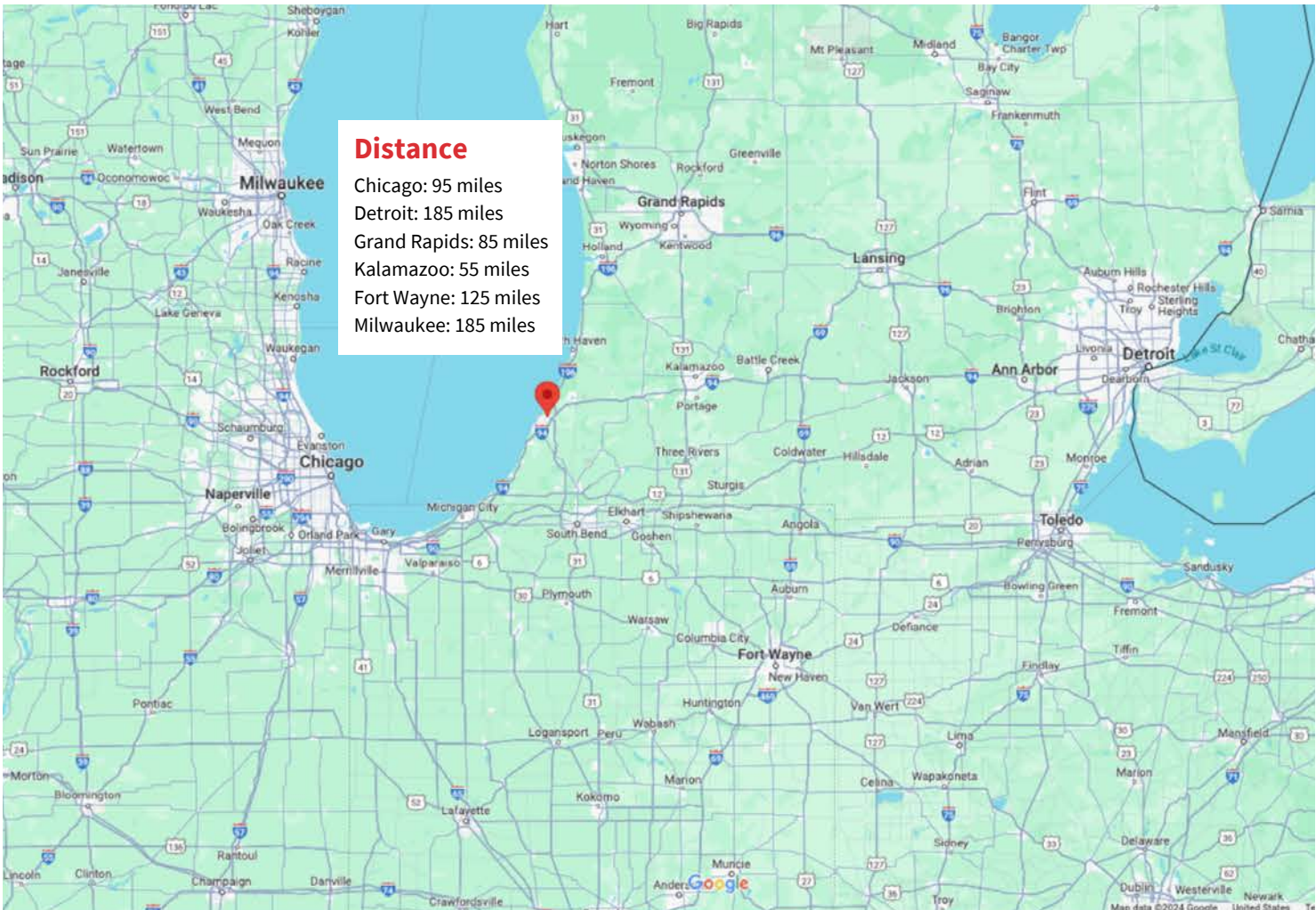


Property Information

Building Size	+/- 99,400 SF
Industrial Space	+/- 93,000
Office Space	+/- 6,400
Construction	Steel
Floors	One (1)
Loading Docks	Seven (7)
Grade Level Overhead Doors	Four (4)
Ceiling Height	20'
Parking Spaces	120
Power/Phase	3000KVA Transformer
Power/Voltage	480V
Air Conditioning	Central Air; Chiller System
Heat	Natural Gas
Lot Acres	10.84
Property Type	Industrial, Class B
Municipality	Benton Twp.







Site Overview



Floor Plan

