

**FOR LEASE**

# 2,000 SF at WESTON PROFESSIONAL CENTRE

**2141 N COMMERCE PKWY**

Weston, FL 33326

**PRESENTED BY:**

**LES BYRON, SIOR, CCIM**

C: 954.401.4713  
les@svncr.com

**KEITH KIDWELL, SIOR, CCIM**

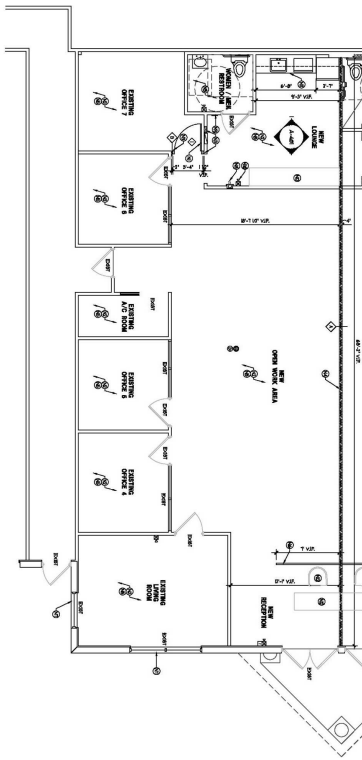
C: 954.234.8777  
keith@svncr.com

**STEVE DAVIS**

C: 954.650.7824  
steve@svncr.com



# PROPERTY SUMMARY



## OFFERING SUMMARY

<b>AVAILABLE SF:</b>	2,000 SF
<b>PRIVATE OFFICE:</b>	Four (4)
<b>CONFERENCE ROOM:</b>	One (1)
<b>LOSS FACTOR:</b>	0%
<b>LEASE RATE:</b>	\$25.00 SF/yr (NNN)
<b>CAM (LOWEST IN THE AREA):</b>	\$11.61 PSF

## PROPERTY DESCRIPTION

Immediate occupancy. Newly renovated office suite with class "A" finishes throughout. Interior glass, built in cabinetry, wood finishes on walls, mix of open space and private offices. Easy access to all major highways. Beautiful space.

## PROPERTY HIGHLIGHTS

- Class 'A' finishes
- Mix of private offices (4) with open space for cubes, etc.
- One (1) conference room
- One (1) kitchen / break room
- One (1) restroom
- Electric in slab
- Tenant signage

**LES BYRON, SIOR, CCIM**  
C: 954.401.4713  
les@svncr.com

**KEITH KIDWELL, SIOR, CCIM**  
C: 954.234.8777  
keith@svncr.com

**STEVE DAVIS**  
C: 954.650.7824  
steve@svncr.com



## ADDITIONAL PHOTOS



**LES BYRON, SIOR, CCIM**  
C: 954.401.4713  
les@svncr.com

**KEITH KIDWELL, SIOR, CCIM**  
C: 954.234.8777  
keith@svncr.com

**STEVE DAVIS**  
C: 954.650.7824  
steve@svncr.com