




2.70 Acres For Sale

Lake Cecile Drive
Kissimmee, FL 34746

 **JLL** SEE A BRIGHTER WAY

Lake Cecile Drive

Kissimmee, FL 32746



Asking price:
\$2,850,000



Located just off of US 192
and 2.8 miles to SR 417



Undeveloped land, high and dry



2.70 acres

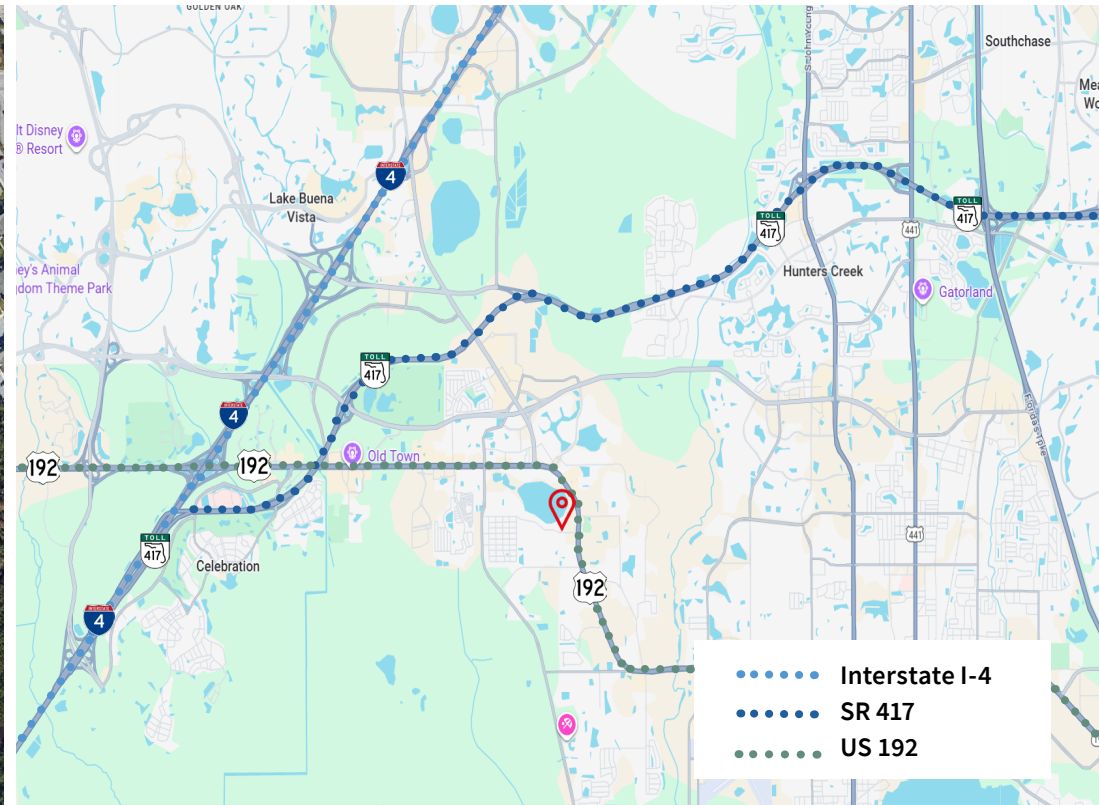


Zoning:
8 parcels - CT
2 parcels - RS-1



Ground cover is trees, bushes
and grass

[Click to view on Google Maps](#)



Property Location

Drive Time Estimate

Walt Disney World 15 min

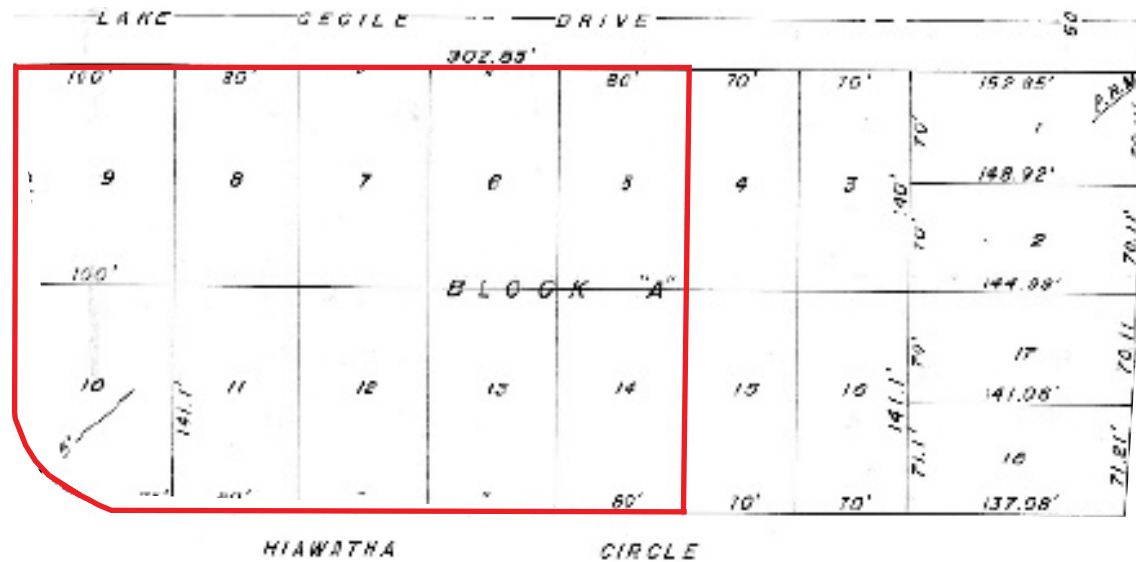
International Airport 30 min

Universal Orlando 30 min

Downtown Orlando..... 40 min



Site Survey

jll.com/orlando

Contact Information:

Nathan Eissler
Executive Vice President
+1 407 342 7494
nathan.eissler@jll.com

Brooks Robinson
Senior Associate
+1 407 619 2249
brooks.robinson@jll.com