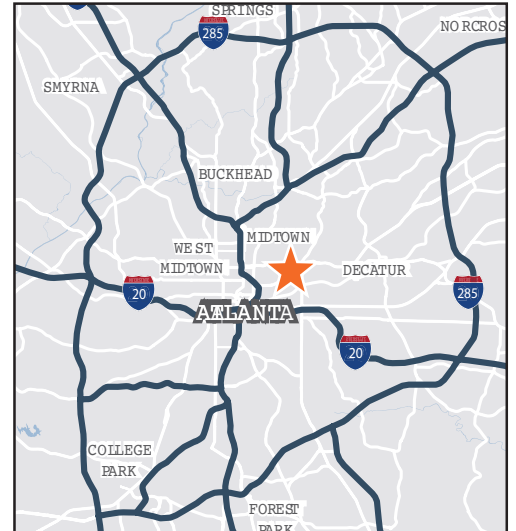
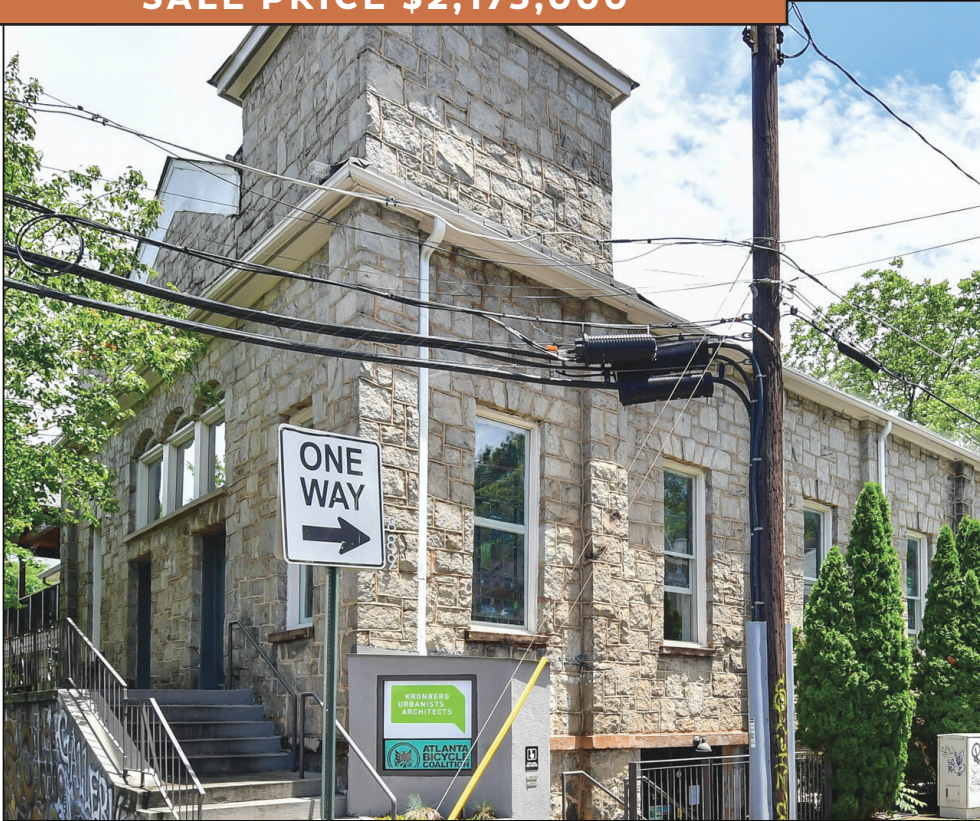


889 Wylie Street

889 Wylie Street, SE • Atlanta, GA 30316

**5590 SF AVAILABLE FOR SALE OR LEASE
ON THE ATLANTA BELTLINE**

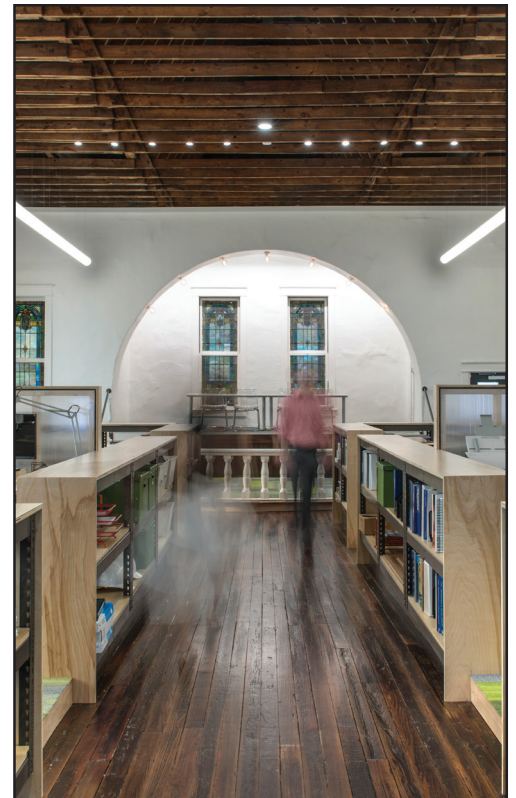
SALE PRICE \$2,175,000



PROPERTY HIGHLIGHTS

The property is located in the Reynoldstown neighborhood, directly across the street from the Atlanta BeltLine with easy access to Cabbagetown, Inman Park, Grant Park, Glenwood Park, Old Fourth Ward and Edgewood.

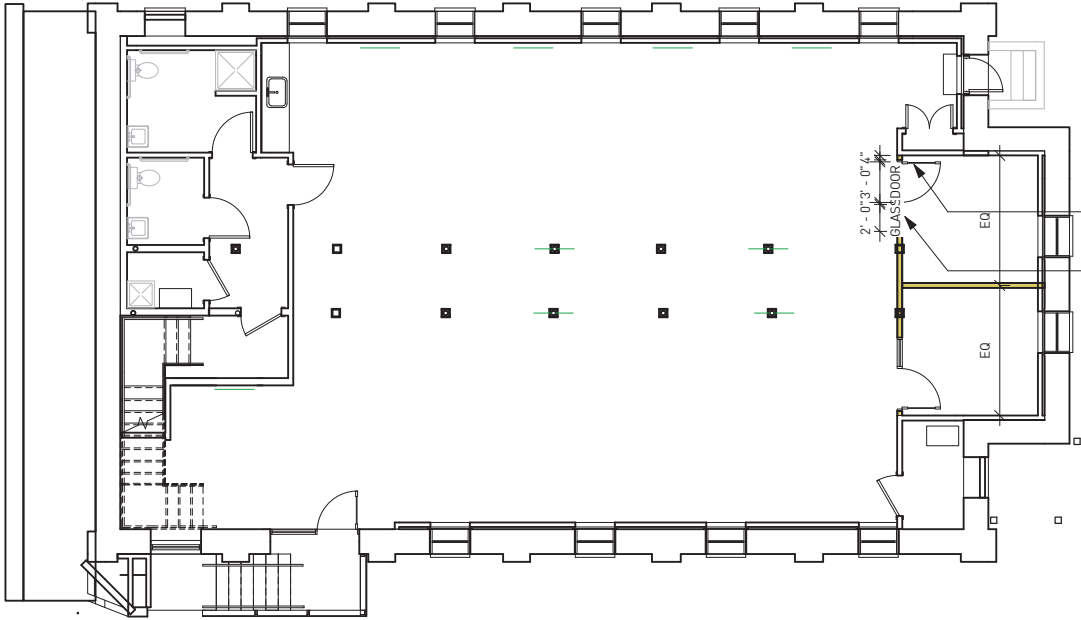
The original stone structure was built in 1922 and was fully renovated in 2014 by Kronberg Wall Architects. The project received a Development of Excellence Award in 2016 from the Atlanta Regional Commission. 887 Wylie St SE is a beautiful example of adaptive reuse, preserving historic elements while updating building systems to serve the functional needs of an architecture firm.



889 Wylie Street

889 Wylie Street, SE • Atlanta, GA 30316

5590 SF AVAILABLE FOR SALE OR LEASE ON THE ATLANTA BELTLINE



Building

5590 GLA

- 4733 RBA Total
- 2635 RBA Upstairs
- 2098 RBA Downstairs
- ~1500 of outdoor patio

Lot

- ~0.11 Acres

Zoning

- MRC-1,
BeltLine Overlay

WALKING OR BIKING

- 0.1 miles from Breaker Beaker
- 0.3 miles from 99 Estoria
- 0.5 miles from Krog Street Market on the Beltline
- 0.5 from Memorial Drive and Bill Kennedy on the Beltline
- 0.6 Miles from Inman Park Reynoldtown Marta
- 0.7 Miles from Carol Street Cafe

