

**FOR LEASE: 550 SF +/-
MEDICAL OFFICE UNIT
385 Main Street, West Haven, CT**



COLONIAL PROPERTIES



UNIT INFORMATION

Lease Price: **\$1,300/Mo. Gross**

Available SF: 550 SF +/-

Occupancy: Immediate

Zoning: CBD

- Full building security system with key fob & camera system
- 2021 - New HVAC rooftop units
- 2021- New windows installed
- Seperate Utilities- City water and sewer
- Has eleavator & handicap ramp
- (20)-off street parking spaces incl. handicap spaces in the rear of the building



**COLONIAL
PROPERTIES**

200 Boston Post Road, Orange, CT 06477

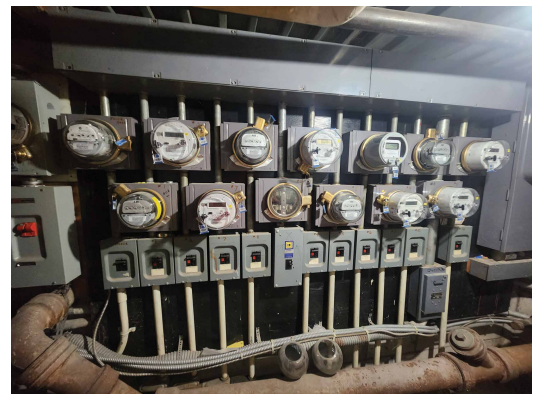
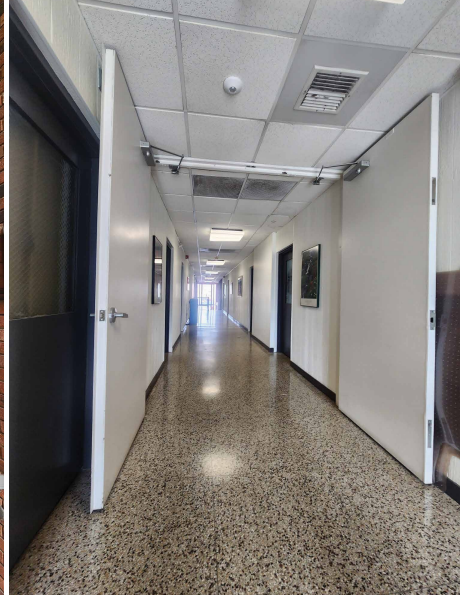
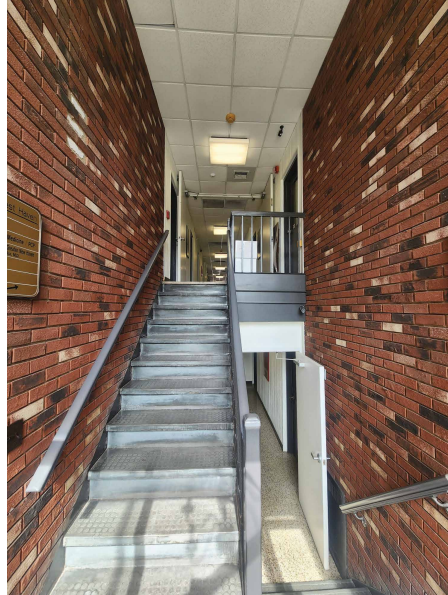
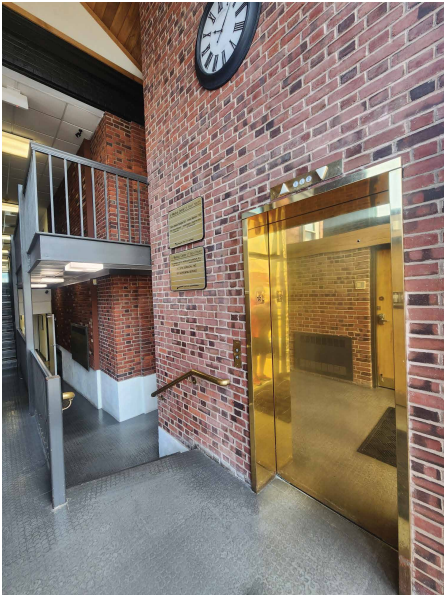
Fred A. Messor x 26
fred@colprop.com
w: 203-795-8060
c: 203-988-6268
www.colprop.com



FOR LEASE: 550 SF +/-
MEDICAL OFFICE UNIT
385 Main Street, West Haven, CT



COLONIAL PROPERTIES



**FOR LEASE: 550 SF +/-
MEDICAL OFFICE UNIT**
385 Main Street, West Haven, CT

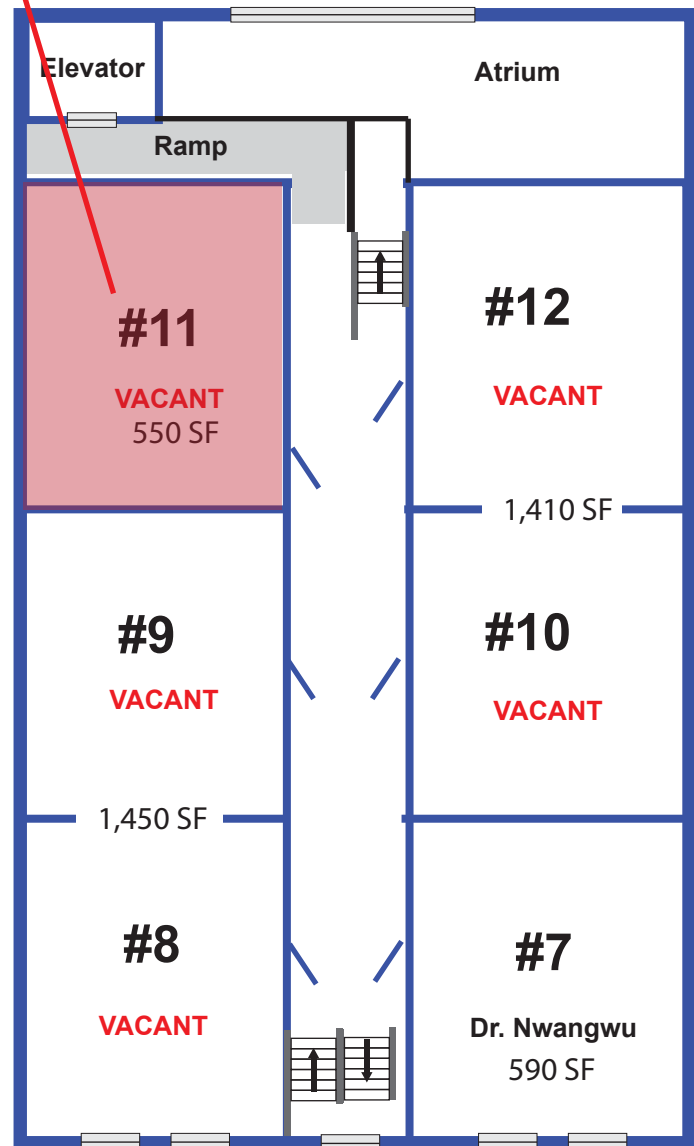
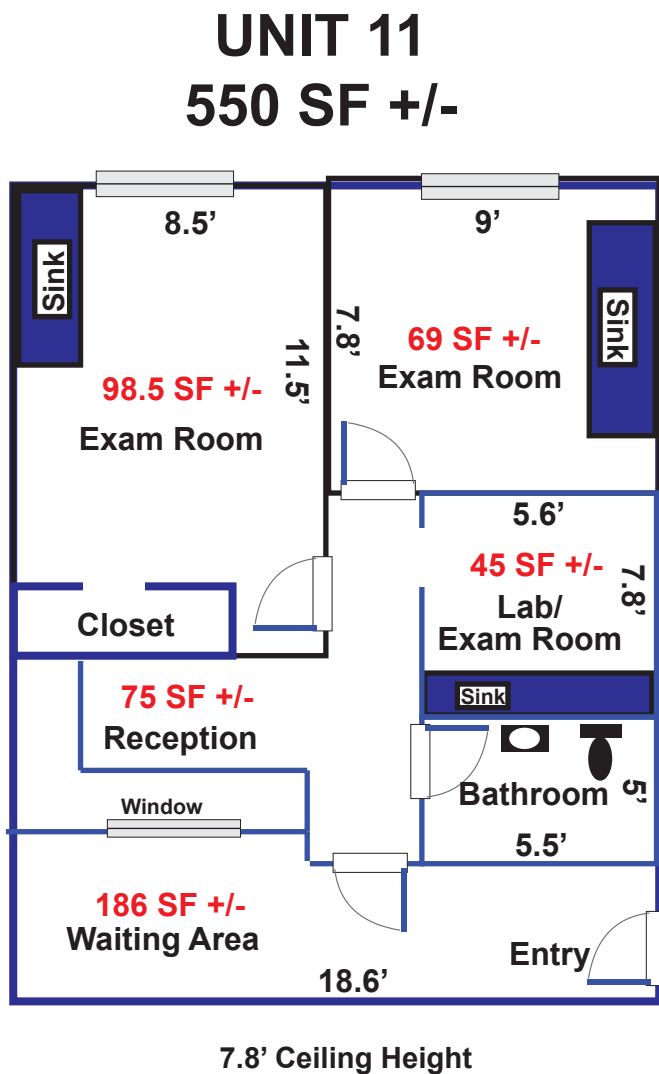


COLONIAL PROPERTIES

PARKING LOT

AVAILABLE

2nd Floor



FRONT



**COLONIAL
PROPERTIES**

200 Boston Post Road, Orange, CT 06477

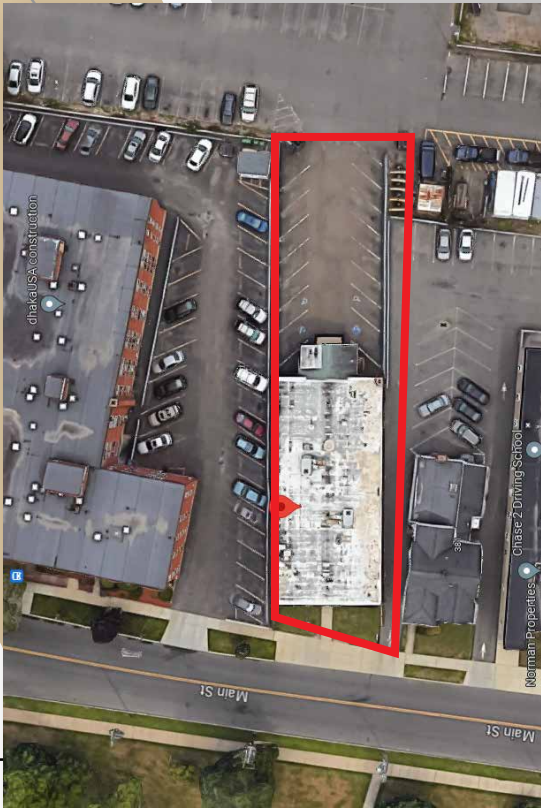
Fred A. Messore x 26
fred@colprop.com
w: 203-795-8060
c: 203-988-6268
www.colprop.com



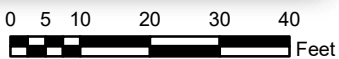
City of West Haven, Connecticut - Assessment Parcel Map

Parcel: 035-0088-0-0000

Address: 385 MAIN ST



Approximate Scale: 1 inch = 27.5 feet



Map Produced: October 2022

Disclaimer: This map is for informational purposes only. All information is subject to verification by any user. The City of West Haven and its mapping contractors assume no legal responsibility for the information contained herein.