

HAWTHORNE, NJ

1015-1027 GOFFLE ROAD, HAWTHORNE, NJ 07506



OFFERING SUMMARY

Available SF: 2,579 SF

Lease Rate: Call For Details

NEIGHBORING TENANTS



















PROPERTY OVERVIEW

1.2 Acres for Lease on Goffle Road

PROPERTY HIGHLIGHTS

- Available Immediately
- 2 Buildings Totaling 2,579 SF on 1.2 Acres
- Visible from Route 208 with Multiple Ingress/Egress from Highway
- Abundant Parking
- Densely Populated Marketplace
- Prime Retail Site
- 24,700+ VPD

FOR MORE INFORMATION CONTACT:

CJ HUTER

201.703.9700 x118

cjhuter@thegoldsteingroup.com

MARC PALESTINA

201.703.9700 x149

mpalestina@thegoldsteingroup.com

LEW FINKELSTEIN

201.703.9700 x122

lfinkelstein@thegoldsteingroup.com

Licensed Real Estate Broker | 45 EISENHOWER DRIVE | SUITE 246 | PARAMUS, NJ 07652

All information is from sources deemed reliable and is submitted subject to errors, omissions, change of price, terms, rental, prior sale and withdrawal without notice.



THEGOLDSTEINGROUP.COM

HAWTHORNE, NJ

1015-1027 GOFFLE ROAD, HAWTHORNE, NJ 07506



FOR MORE INFORMATION CONTACT:

CJ HUTER

201.703.9700 x118

cjhuter@thegoldsteingroup.com

MARC PALESTINA

201.703.9700 x149

mpalestina@thegoldsteingroup.com

LEW FINKELSTEIN

201.703.9700 x122

lfinkelstein@thegoldsteingroup.com



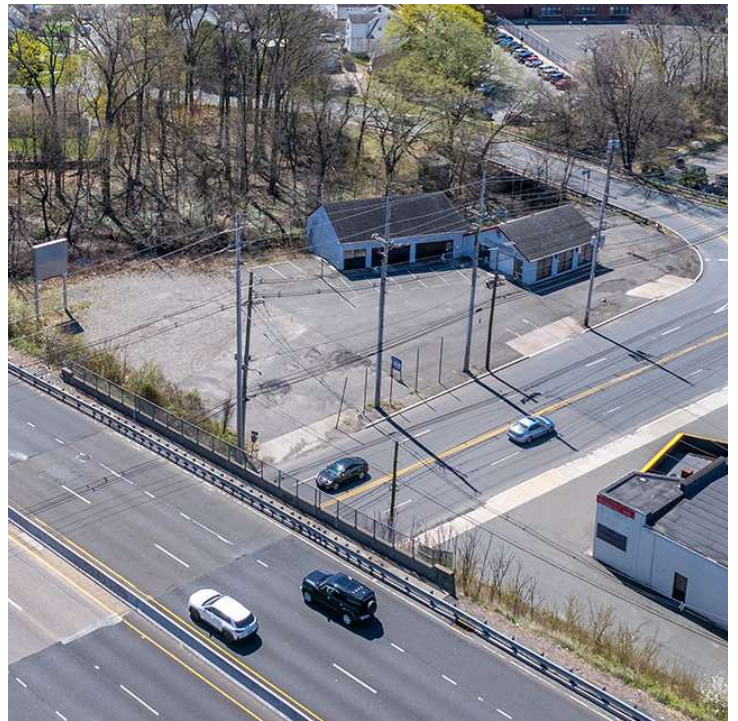
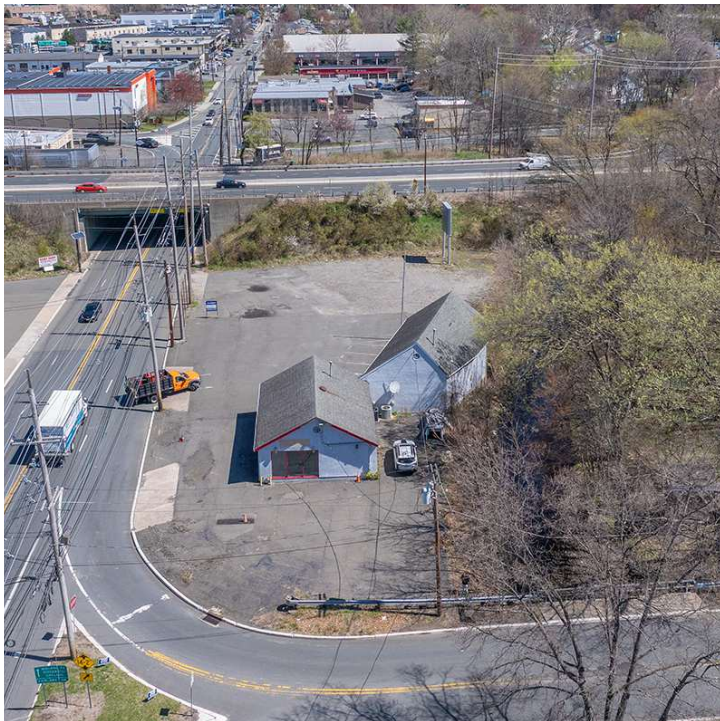
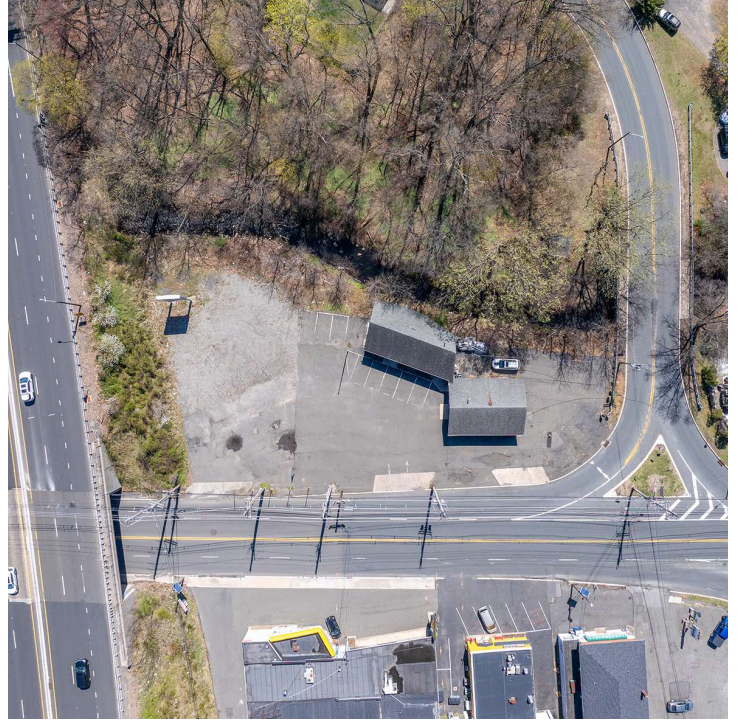
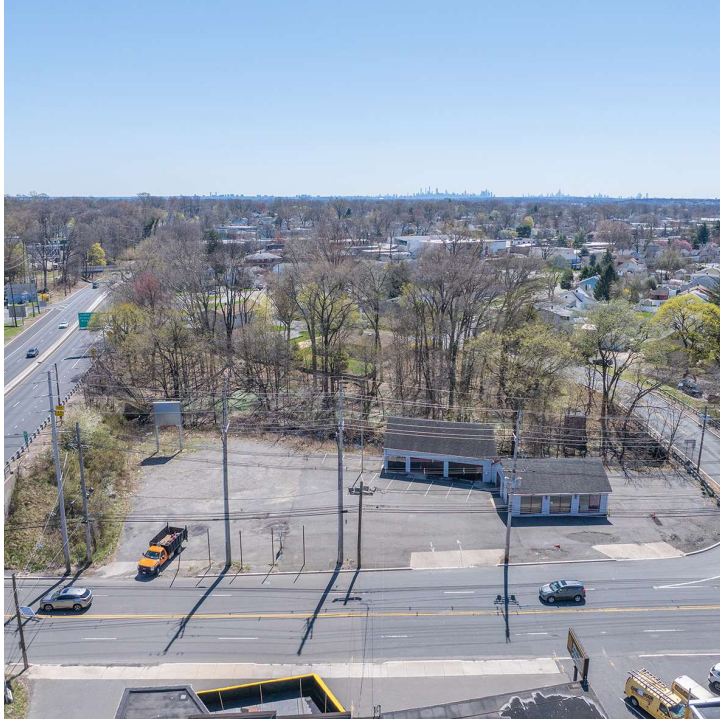
Licensed Real Estate Broker | 45 EISENHOWER DRIVE | SUITE 246 | PARAMUS, NJ 07652

THEGOLDSTEINGROUP.COM

All information is from sources deemed reliable and is submitted subject to errors, omissions, change of price, terms, rental, prior sale and withdrawal without notice.

HAWTHORNE, NJ

1015-1027 GOFFLE ROAD, HAWTHORNE, NJ 07506



FOR MORE INFORMATION CONTACT:

CJ HUTER

201.703.9700 x118

cjhuter@thegoldsteingroup.com

MARC PALESTINA

201.703.9700 x149

mpalestina@thegoldsteingroup.com

LEW FINKELSTEIN

201.703.9700 x122

lfinkelstein@thegoldsteingroup.com



THEGOLDSTEINGROUP.COM

Licensed Real Estate Broker | 45 EISENHOWER DRIVE | SUITE 246 | PARAMUS, NJ 07652

All information is from sources deemed reliable and is submitted subject to errors, omissions, change of price, terms, rental, prior sale and withdrawal without notice.

HAWTHORNE, NJ

1015-1027 GOFFLE ROAD, HAWTHORNE, NJ 07506



FOR MORE INFORMATION CONTACT:

CJ HUTER

201.703.9700 x118

cjhuter@thegoldsteingroup.com

MARC PALESTINA

201.703.9700 x149

mpalestina@thegoldsteingroup.com

LEW FINKELSTEIN

201.703.9700 x122

lfinkelstein@thegoldsteingroup.com



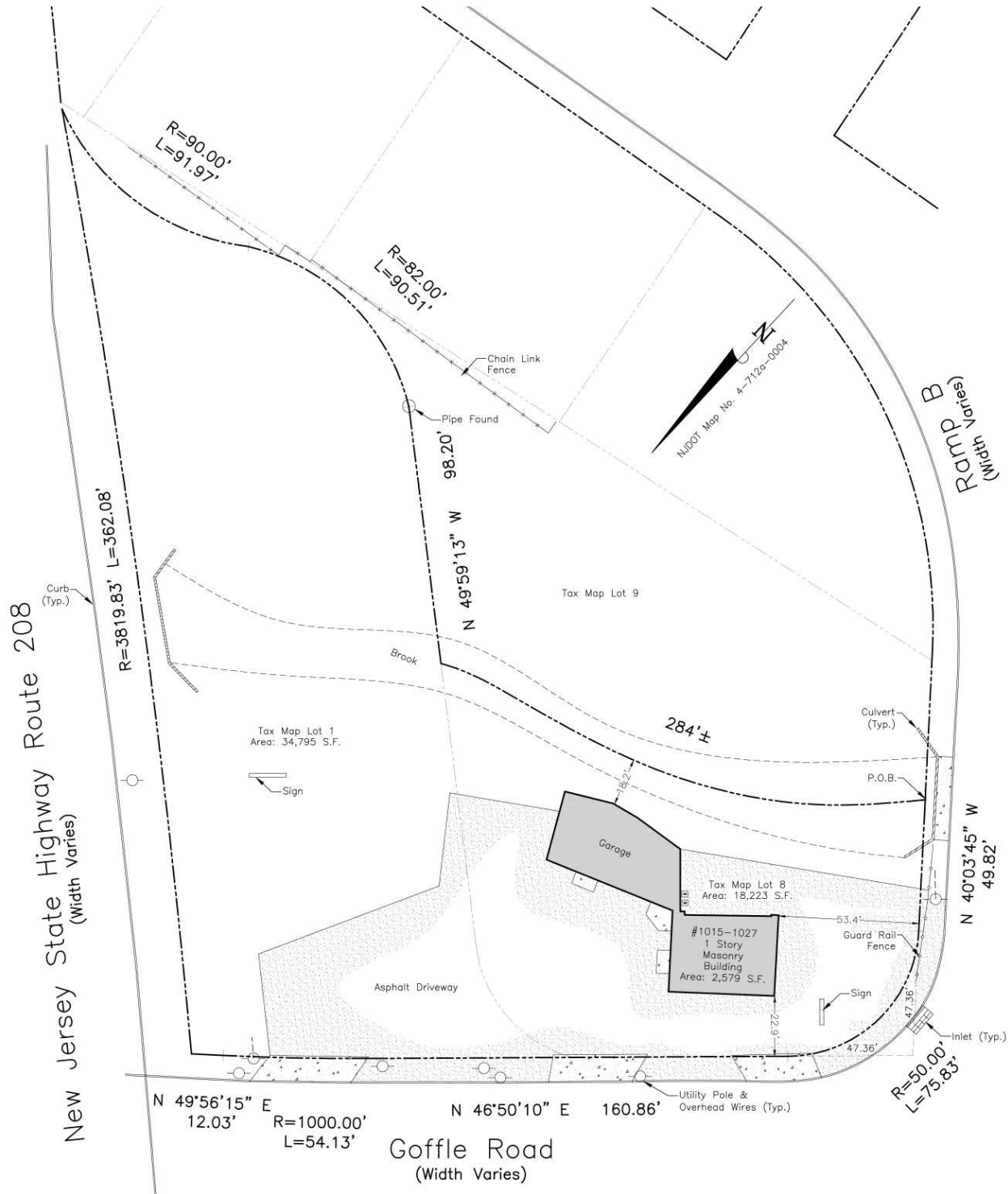
Licensed Real Estate Broker | 45 EISENHOWER DRIVE | SUITE 246 | PARAMUS, NJ 07652

THEGOLDSTEINGROUP.COM

All information is from sources deemed reliable and is submitted subject to errors, omissions, change of price, terms, rental, prior sale and withdrawal without notice.

HAWTHORNE, NJ

1015-1027 GOFFLE ROAD, HAWTHORNE, NJ 07506



FOR MORE INFORMATION CONTACT:

CJ HUTER

201.703.9700 x118
cjhuter@thegoldsteingroup.com

MARC PALESTINA

201.703.9700 x149
mpalestina@thegoldsteingroup.com

LEW FINKELSTEIN

201.703.9700 x122
lfinkelstein@thegoldsteingroup.com



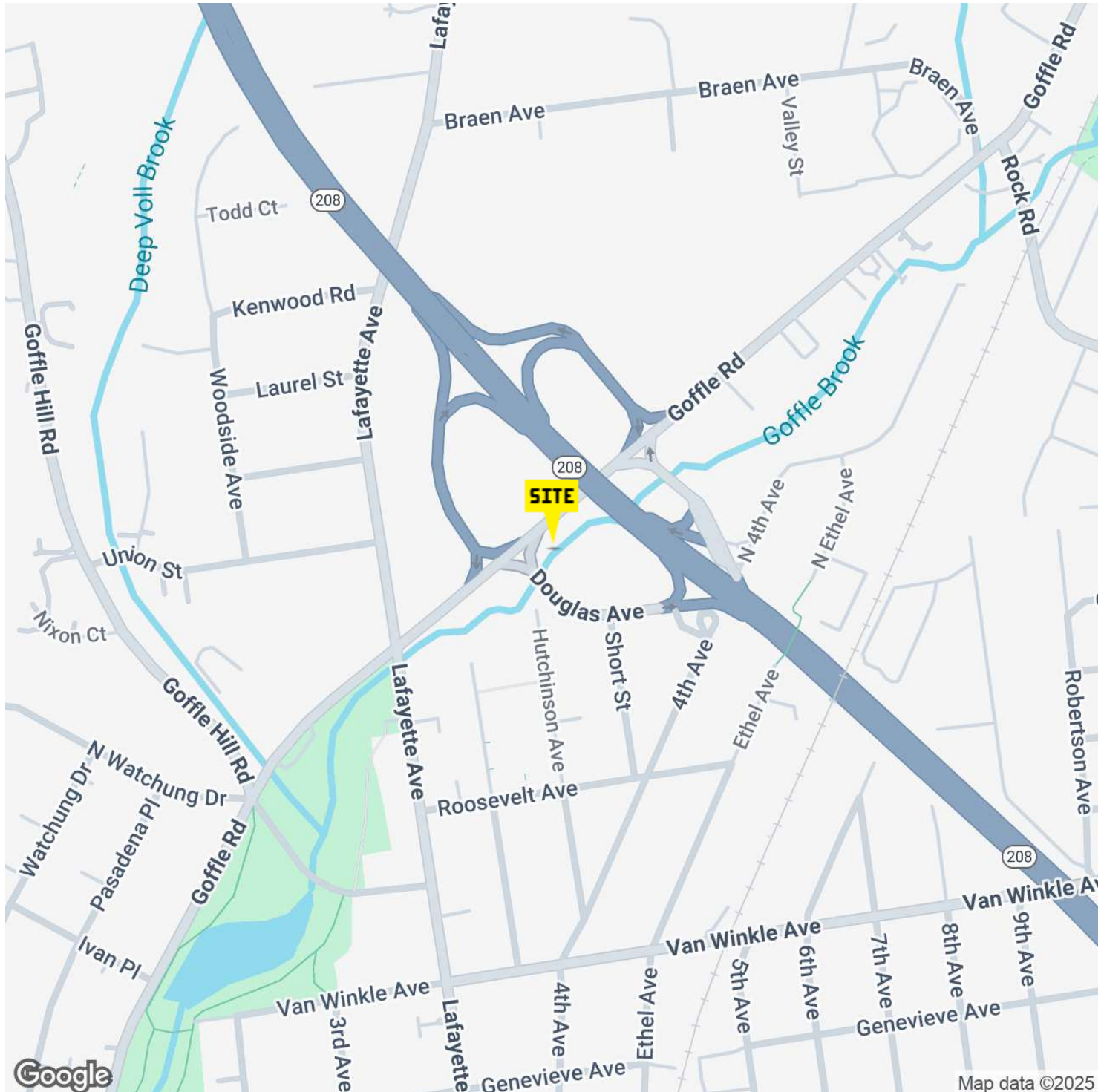
Licensed Real Estate Broker | 45 EISENHOWER DRIVE | SUITE 246 | PARAMUS, NJ 07652

THEGOLDSTEINGROUP.COM

All information is from sources deemed reliable and is submitted subject to errors, omissions, change of price, terms, rental, prior sale and withdrawal without notice.

HAWTHORNE, NJ

1015-1027 GOFFLE ROAD, HAWTHORNE, NJ 07506



FOR MORE INFORMATION CONTACT:

CJ HUTER

201.703.9700 x118
cjhuter@thegoldsteingroup.com

MARC PALESTINA

201.703.9700 x149
mpalestina@thegoldsteingroup.com

LEW FINKELSTEIN

201.703.9700 x122
lfinkelstein@thegoldsteingroup.com



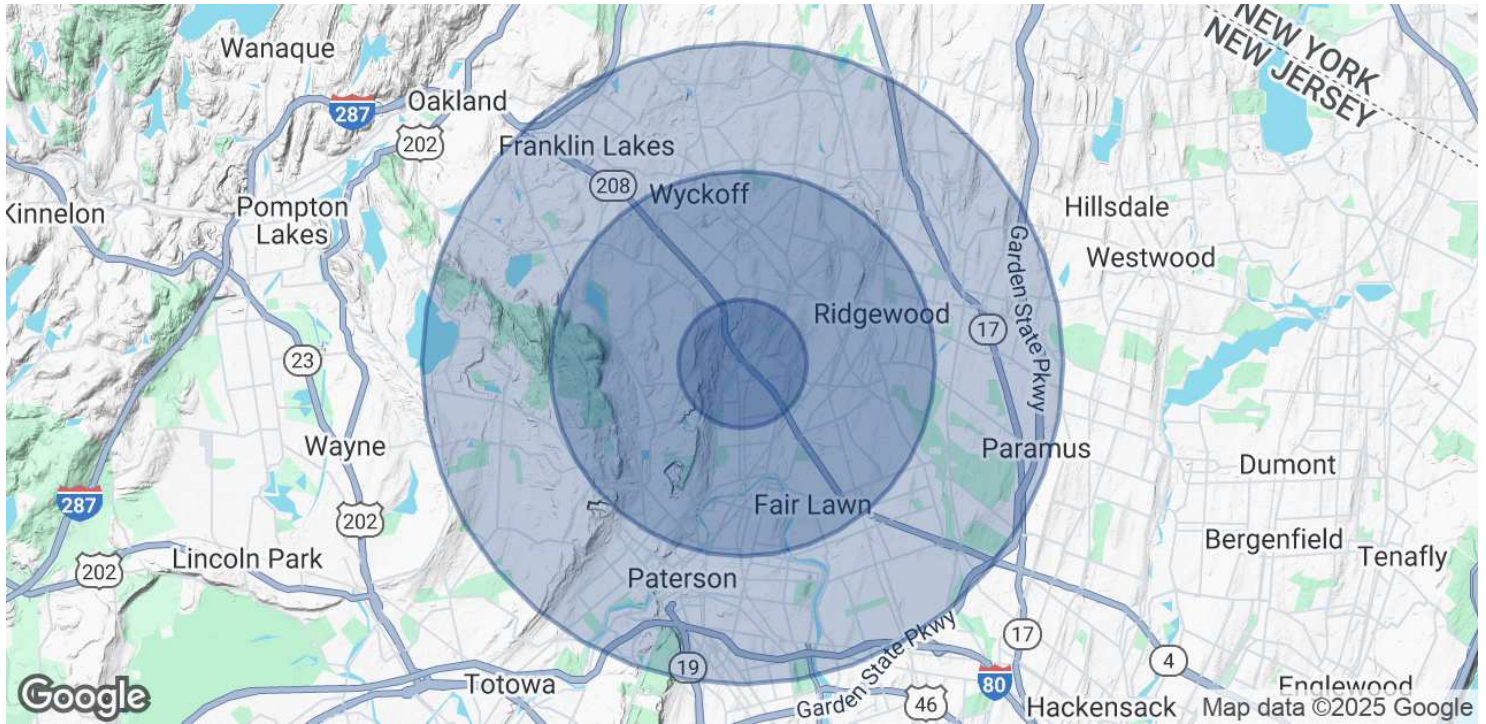
Licensed Real Estate Broker | 45 EISENHOWER DRIVE | SUITE 246 | PARAMUS, NJ 07652

THEGOLDSTEINGROUP.COM

All information is from sources deemed reliable and is submitted subject to errors, omissions, change of price, terms, rental, prior sale and withdrawal without notice.

HAWTHORNE, NJ

1015-1027 GOFFLE ROAD, HAWTHORNE, NJ 07506



POPULATION	1 MILE	3 MILES	5 MILES
Total Population	14,552	147,624	389,601
Average Age	43	40	40
Average Age (Male)	41	39	39
Average Age (Female)	44	41	41

HOUSEHOLDS & INCOME	1 MILE	3 MILES	5 MILES
Total Households	5,480	49,838	130,402
# of Persons per HH	2.7	3	3
Average HH Income	\$183,276	\$169,677	\$147,754
Average House Value	\$691,279	\$662,722	\$604,046

Demographics data derived from AlphaMap

FOR MORE INFORMATION CONTACT:

CJ HUTER

201.703.9700 x118
cjhuter@thegoldsteingroup.com

MARC PALESTINA

201.703.9700 x149
mpalestina@thegoldsteingroup.com

LEW FINKELSTEIN

201.703.9700 x122
lfinkelstein@thegoldsteingroup.com



Licensed Real Estate Broker | 45 EISENHOWER DRIVE | SUITE 246 | PARAMUS, NJ 07652

THEGOLDSTEINGROUP.COM

All information is from sources deemed reliable and is submitted subject to errors, omissions, change of price, terms, rental, prior sale and withdrawal without notice.