

**COMMERCIAL**

# FOR SALE

**Multi-Tenant Retail  
Space in Noblesville!**

**14235 Mundy Drive  
Noblesville, IN 46060**

The retail center itself is a modern structure with ample parking space and easy accessibility. Its strategic location and diverse tenant mix ensure consistent footfall and high visibility. The building's design allows for easy maintenance and operations.

This sale offers an incredible opportunity to own a multi-tenant retail center with established businesses. It's not just about owning prime real estate; it's about stepping into successful operations with proven profitability.

Whether you're an experienced investor looking to expand your portfolio or an entrepreneur seeking a turnkey business opportunity, this retail center offers a unique blend of real estate and business investment.

## Call for Price

**Land Size: 1.06 Acres  
Building Size: 5,184 Sq. Ft.**

**Contact:**

**Himmat Ghoman**

**Broker**

**317.908.2034**

**[hghoman@c21cre.com](mailto:hghoman@c21cre.com)**

©Copyright 2011-2025 CRE Tech, Inc. All Rights Reserved.. CENTURY 21 Commercial®, the CENTURY 21 Commercial Logo and C21 Commercial® are registered service marks owned by Century 21 Real Estate LLC. Century 21 Real Estate LLC fully supports the principles of the Fair Housing Act and Equal Opportunity Act. Each office is independently owned and operated.



#### KEY FACTS

64,322  
Population

35.7 Median Age

2.63  
Average Household Size

23,069  
Total Households

#### EDUCATION

1.34%  
No High School  
Diploma

21.11%  
High School  
Graduate

13.3%  
Some College

38.25%  
Bachelor's/ Grad

#### BUSINESS

2,022  
Total Businesses

24,881  
Total Employees

#### EMPLOYMENT

2,974  
Manufacturing  
Employees

5,671  
Retail Trade  
Employees

2,166  
Eating & Drinking  
Employees

1,666  
Finance/Ins/Real  
Estate Emp

3% Unemployment Rate

#### INCOME

\$108,992  
Median Household Income

\$52,045  
Per Capita Income

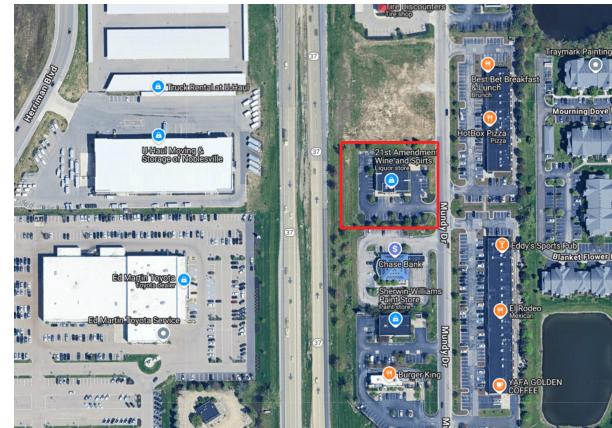
\$335,861  
Median Net Worth

#### Households by Income

The largest group : \$100,000 - \$149,999 (23.21%)  
The smallest group : \$15,000 - \$24,999 (3.02%)

Indicator	Value(%)	
< \$15,000	3.27	
\$15,000 - \$24,999	3.02	
\$25,000 - \$34,999	3.74	
\$35,000 - \$49,999	7.57	
\$50,000 - \$74,999	13.39	
\$75,000 - \$99,999	12.99	
\$100,000 - \$149,999	23.21	
\$150,000 - \$199,999	15.85	
\$200,000+	16.95	

**21 COMMERCIAL.**



This information has been obtained from sources believed reliable. We have not verified it and make no guarantee, warranty or representation about it. Any projections, opinions, assumptions or estimates used are for example only and do not represent the current or future performance of the property. You and your advisors should conduct a careful, independent investigation of the property to determine to your satisfaction the suitability of the property for your needs. Photos herein are the property of their respective owners and use of these images without the express written consent of the owner is prohibited.

**Contact:**  
**Himmat Ghoman**  
**Broker**  
**317.908.2034**  
**hghoman@c21cre.com**

©Copyright 2011-2025 CRE Tech, Inc. All Rights Reserved.. CENTURY 21 Commercial®, the CENTURY 21 Commercial Logo and C21 Commercial® are registered service marks owned by Century 21 Real Estate LLC. Century 21 Real Estate LLC fully supports the principles of the Fair Housing Act and Equal Opportunity Act. Each office is independently owned and operated.