

# 6556

A I R P O R T   R O A D

WEST JORDAN, UTAH 84084



Contact: Mindy Ackerman  
801-456-9520  
[mindy.ackerman@jll.com](mailto:mindy.ackerman@jll.com)

Wick Udy  
801-456-9523  
[wick.udy@jll.com](mailto:wick.udy@jll.com)

[jll.com](https://www.jll.com)

# Building Specs

Address	6556 South Airport Road
Total Building SF	150,000 SF
Available SF	62,500 SF divisible to 6,250 SF
Clear Height	19'6" - 25'6"
Column Spacing	50' X 60'
Loading	Nine (9) 12'w x 14'h grade door
Power	200 amp/ 120/240v / 3 ph per bay
Parking Ratio	1.01:1,000 SF (152 car stalls)
Building Depth	125'
Truck Court	110'
Land	6.57 Acres
Year Built	2021

## Zoning

M-1

## In-Place Infrastructure (per bay)

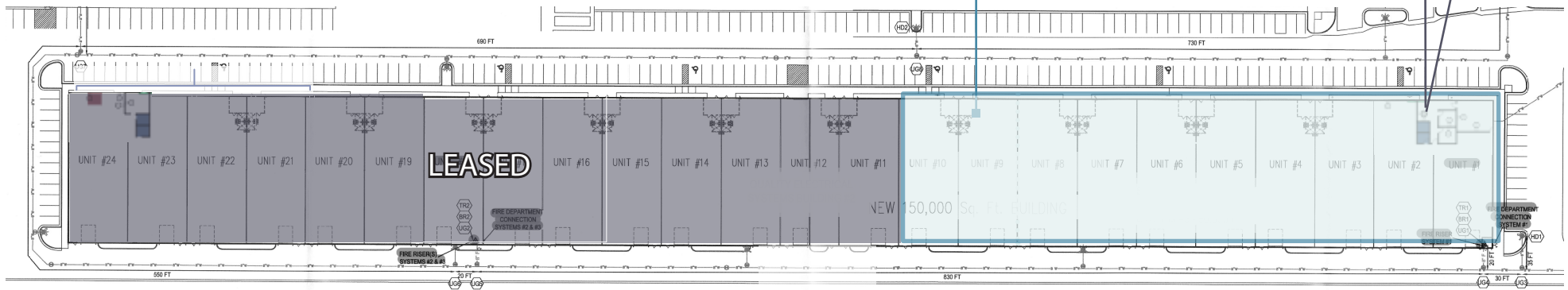
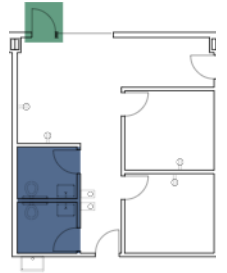
- LED lighting
- Gas forced air heat
- Evaporative cooling
- Automatic openers
- Glass store fronts
- Plumbing caps
- ESFR sprinkling system
- Wifi
- Build to suit office



**6556**  
AIRPORT ROAD

# Site Plan

62,500 SF  
+/- 1,200 SF Office  
Nine (9) 12'x14' grade doors  
One (1) 24'6" w x 14' h East door  
One (1) 20' w x 14' h grade door





#### Drivetime 🚗

I-215	12 miles   12 mins
I-15	6.7 miles   13 mins
I-80	17 miles   22 mins

#### Demographics

👤	<b>Population:</b>	116,664
🏠	<b>Housing Units:</b>	37,058
💰	<b>Average Household Income:</b>	\$87,006

Contact: Mindy Ackerman  
801-456-9520  
mindy.ackerman@jll.com

Wick Udy  
801-456-9523  
wick.udy@jll.com

Jones Lang LaSalle Brokerage, Inc. 2024 Jones Lang LaSalle LP, Inc. All rights reserved. All information contained herein is from sources deemed reliable; however, no representation or warranty is made to the accuracy thereof.