

BAYSIDE REALTY PARTNERS PRESENTS

Foster City Medical Pavilion

1241 E. Hillsdale Blvd., Foster City, California

Newly Remodeled Class A Medical/Dental Office Building



TRASK LEONARD
President and CEO
650.533.2591
tleonard@baysiderp.com
DRE#01152101



GRACE LINDBERG
Vice President
415.307.0252
glindberg@baysiderp.com
DRE#02230832

BAYSIDE
REALTY PARTNERS
MEDICAL/DENTAL PROPERTY SPECIALISTS

Foster City Medical Pavilion

1241 E. Hillsdale Blvd., Foster City, California

LOCATION

- Opportunity to use Medicare-accredited surgery center in building
- Newly remodeled Class A Medical/Dental Office Building
- Suites from 928 RSF to 3,410 RSF that can be build to suit
- Attractive financing available to tenants for build-out, equipment and working capital through preferred lender
- Minutes to HWY 101/92 interchange, offering easy access to Peninsula and East Bay Markets
- Close proximity to SFO and OAK Airports
- Approximately 5 per 1,000 sf parking ratio



BUILDING

- Gorgeous new building facade and lobby structure
- New gurney-accessible elevator
- New roof, new HVAC, repaved parking lot and significant landscape renovations
- Institutional ownership. On-site management
- Home to Foster City Medical Center (primary care), Zouves Fertility Clinic
- Significant tenant improvement package

BAYSIDE REALTY PARTNERS PRESENTS
Foster City Medical Pavilion
1241 E. Hillsdale Blvd., Foster City, California

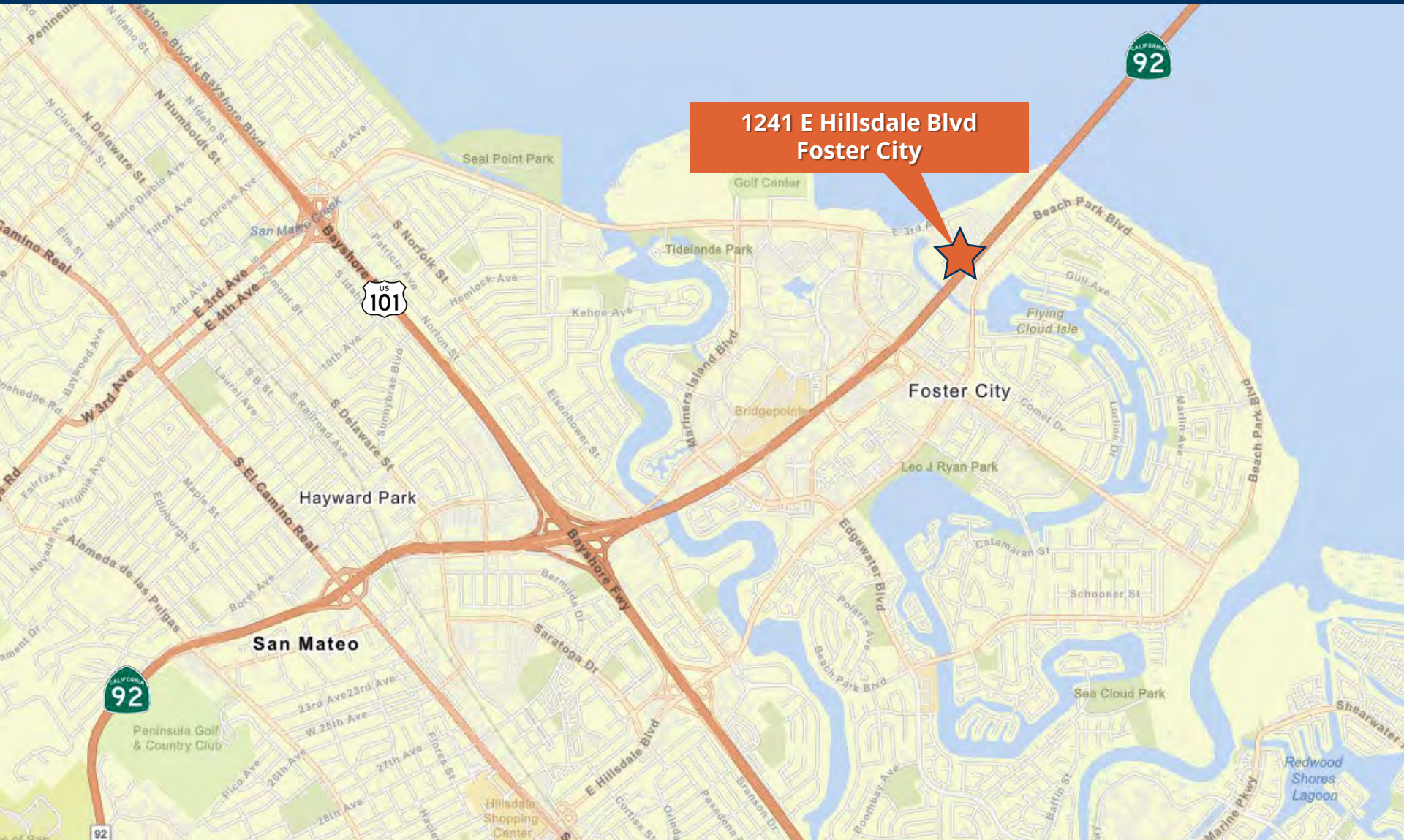


BAYSIDE REALTY PARTNERS PRESENTS
Foster City Medical Pavilion
1241 E. Hillsdale Blvd., Foster City, California



Foster City Medical Pavilion

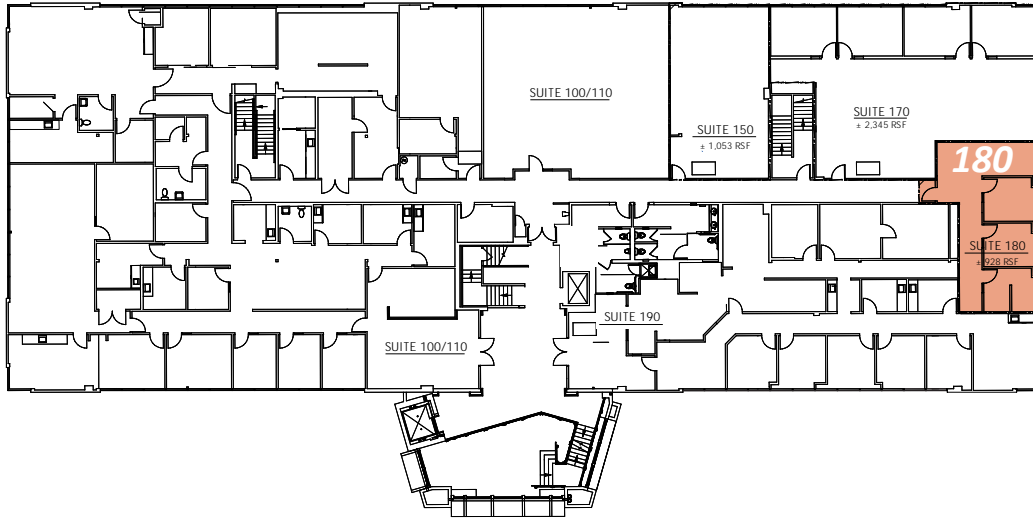
1241 E. Hillsdale Blvd., Foster City, California



1241 E Hillsdale Blvd
Foster City

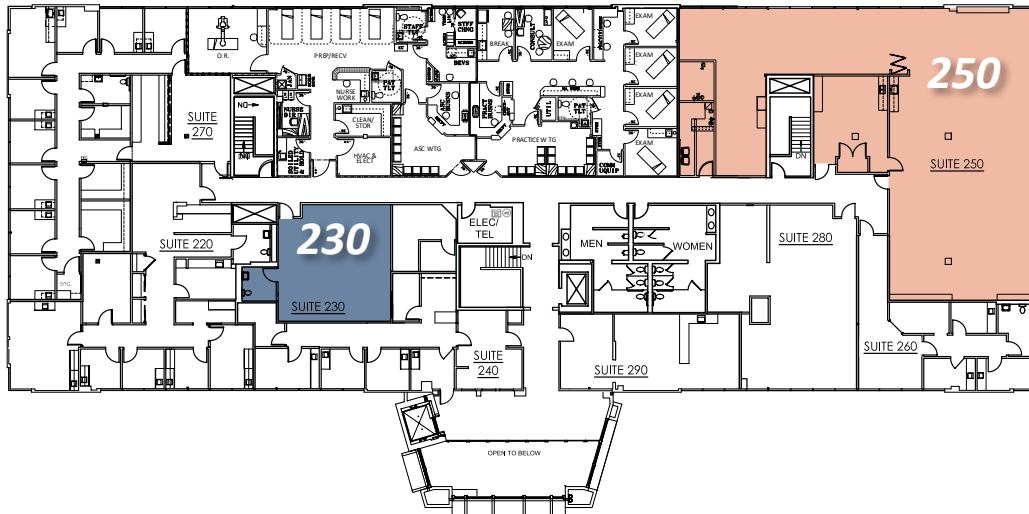
Foster City Medical Pavilion

1241 E. Hillsdale Blvd., Foster City, California



FIRST FLOOR

Suite 180 933 RSF
Recently remodeled suite with 3 offices/exam rooms. Excellent natural light



SECOND FLOOR

Suite 230 912 RSF
Restroom. Can be built to suit.

Suite 250 4,704 RSF
Excellent natural light, 1 large procedure room, 1 office substantial storage. Divisible to ~2,000 sf

Meet Your Expert Team



TRASK LEONARD

President and CEO

650.533.2591

tleonard@baysiderp.com

DRE#01152101



GRACE LINDBERG

Vice President

415.307.0252

glindberg@baysiderp.com

DRE#02230832

BAYSIDE REALTY PARTNERS

The preeminent provider of management, leasing, construction management and accounting services for healthcare properties.



MARKET LEADER

- Leasing & Property Management
- Investment Sales
- Tenant Representation
- Construction Management
- Property Repositioning



INFLUENTIAL NETWORK

- Institutional Investors
- Healthcare Systems and Healthcare Districts
- Physicians & Districts
- Private Investors



DOMINANT FOOTPRINT

- 2 million SF leased & managed
 - 50+ MOB portfolio
 - 10,000-240,000 SF
 - 500,000 SF portfolio
- San Francisco's largest MOBs
- 950+ leases executed
- 500+ medical and dental tenants

DOMINANT. EXPERT. INFLUENTIAL.