

228-246 EAST 122ND STREET

NEW YORK, NY 10035



210' Wide | 106,426 Buildable SF | Opportunity Zone Development Site | East Harlem



** AI Generated Interpretation - see actual zoning study for setbacks

21,243	106,426	210'	EAST HARLEM	OPPORTUNITY ZONE
TOTAL LOT SQ. FT.	BUILDABLE SF	WIDE	NEIGHBORHOOD	

PROPERTY INFORMATION

Block/Lot:	1786 / 31, 32, 33, 133, 34, 35, 36, 37	Zoning	R7A
Lot Dimensions:	209.99' x 100.92'	FAR	5.01
Lot Sq. Ft.	21,243	Buildable Sq. Ft.	106,426
Existing Building:	11,319 SF	Maximum Unit Count	156
Cross Streets	122nd St. between 2nd & 3rd Avenue	Real Estate Taxes (25/26)	\$209,456

OWNERSHIP REQUESTS PROPOSALS

ANTHONY GAGLIANO
anthony@srpbrokers.com
917-446-4400

BRYON RUSSELL
bryon@srpbrokers.com
646-479-2704



The information contained herein has been obtained from sources believed to be reliable but is not guaranteed. Strategic Realty Partners and its agents make no representations or warranties, express or implied, as to the accuracy, completeness, or suitability of the information. All interested parties are responsible for conducting their own independent investigation and verification of all data, including but not limited to square footage, zoning, land use, and financial projections. This offering is subject to errors, omissions, prior sale or lease, change in price or terms, and withdrawal without notice.



EXECUTIVE SUMMARY

Strategic Realty Partners has been exclusively retained to offer for sale a premier development opportunity located at 228-246 East 122nd Street in the heart of Second Avenue Subway Phase 2 transformation corridor.

This exceptional 21,243 SF land assemblage presents 210 feet of frontage along East 122nd Street, offering 106,426 buildable square feet as-of-right under R7A zoning. The site benefits from Opportunity Zone designation, providing significant tax advantages for qualified investments. Located just three blocks from the 125th Street-Lexington Avenue transit hub (4/5/6 lines, Metro North and future Q train), the property sits at the nexus of East Harlem's unprecedented development boom.

Major projects including One East Harlem, Memorial Sloan Kettering's Proton Center, Clipper Equity's 1800 Park Ave have established this corridor as Manhattan's next frontier for growth. The current improvement will be delivered vacant, allowing immediate development of up to 156 residential units across two 11-story contextual buildings.

We invite qualified developers to explore this compelling opportunity to create value in one of New York's most dynamic emerging markets.

FOR MORE INFORMATION, PLEASE CONTACT:

ANTHONY GAGLIANO
anthony@srpbrokers.com
917-446-4400

BRYON RUSSELL
bryon@srpbrokers.com
646-479-2704



228-246 EAST 122ND STREET

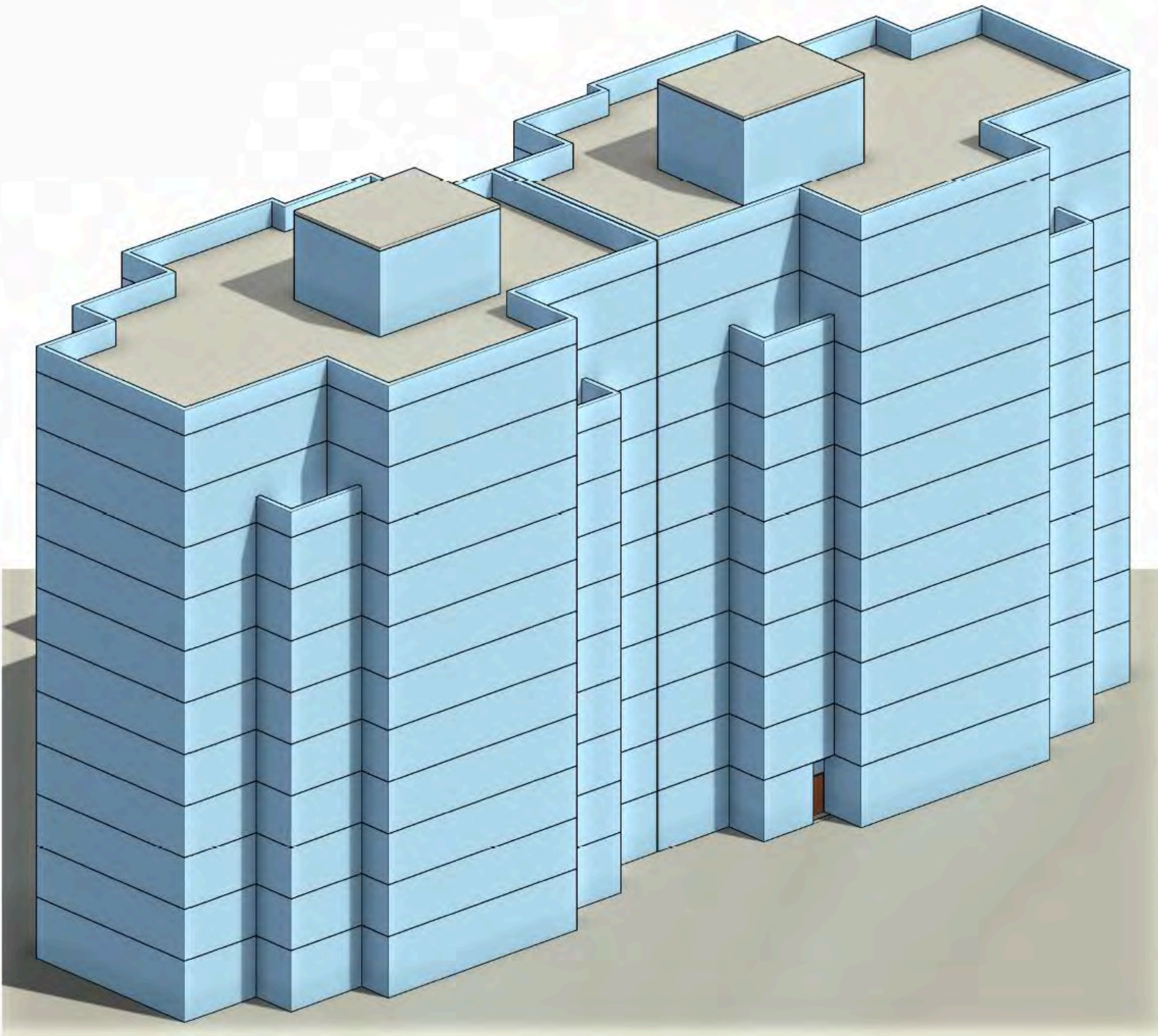
NEW YORK, NY 10035



210' Wide | 106,426 Buildable SF | Opportunity Zone Development Site | East Harlem

UAP ZONING INFORMATION

District	R7A R7-1' R7-2'
Minimum base height (in feet)	40
Maximum base height (in feet)	85
Maximum height of buildings or other structures (in feet)	115



228-246 EAST 122ND STREET
NEW YORK, NY 10035

FOR MORE INFORMATION, PLEASE CONTACT:

ANTHONY GAGLIANO
anthony@srpbrokers.com
917-446-4400

BRYON RUSSELL
bryon@srpbrokers.com
646-479-2704



The information contained herein has been obtained from sources believed to be reliable but is not guaranteed. Strategic Realty Partners and its agents make no representations or warranties, express or implied, as to the accuracy, completeness, or suitability of the information. All interested parties are responsible for conducting their own independent investigation and verification of all data, including but not limited to square footage, zoning, land use, and financial projections. This offering is subject to errors, omissions, prior sale or lease, change in price or terms, and withdrawal without notice.

NEIGHBORHOOD OVERVIEW



228-246 EAST 122ND STREET, NEW YORK, NY 10035



Situated on the **south side of East 122nd Street between 2nd and 3rd Avenues**, the subject property occupies a prime position in East Harlem's emerging development corridor.

Recent Development Activity

- **1800 Park Ave:** Clipper Equity just purchased this 682,000 SF project from The Durst Org
- **NY Proton Center:** New York's first and only proton therapy medical facility
- **One East Harlem:** Recently completed 404 unit luxury residential project
- **Sendero Verde:** 709 unit, sustainable affordable housing completed in 2024
- **180 E 125:** 614 luxury units underway by JCS

Neighborhood Amenities

- **Parks:** Marcus Garvey Park, Thomas Jefferson Park, Central Park
- **Cultural:** El Museo del Barrio, Apollo Theatre, Museum of the City of New York
- **Dining:** Rao's, Patsy's Pizzeria, numerous Latin American restaurants
- **Retail:** East River Plaza shopping center
- **Education:** Hunter School of Social Work

Transportation Access

- **Subway:** 125th Street-Lexington Avenue (4/5/6 lines) - 3-minute walk
- **Metro-North:** 125th Street Station - Next Stop: Grand Central
- **Bus Lines:** M60-SBS, M101, M103, M125
- **Future:** Second Avenue Subway Q line extension is in construction.

FOR MORE INFORMATION, PLEASE CONTACT:

ANTHONY GAGLIANO
anthony@srpbrokers.com
917-446-4400

BRYON RUSSELL
bryon@srpbrokers.com
646-479-2704



NEIGHBORHOOD OVERVIEW

228-246 EAST 122ND STREET, NEW YORK, NY 10035



2ND AVE SUBWAY EXTENSION PROJECT PHASE 2

The 2nd Avenue Subway extension project is more than transit—it's a gateway to growth in which the City and the MTA are making \$7.7 Billion investment in East Harlem. Project will create three new ADA-accessible stations at 106th, 116th, and 125th streets.



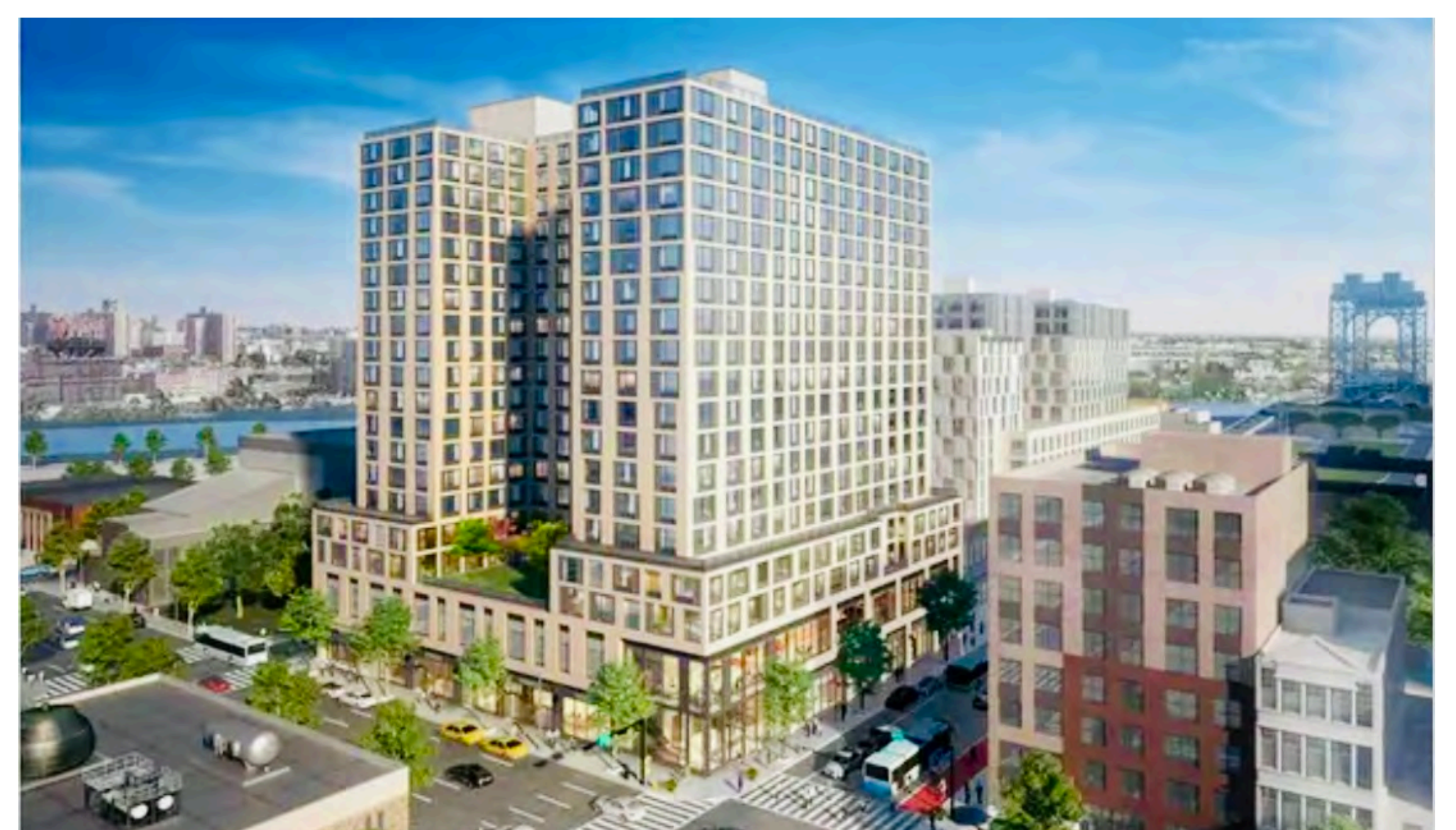
1800 PARK AVE CLIPPER SITE

With Clipper Equity's vision for 1800 Park Avenue, East Harlem is redefining its skyline. This 682,000 SF project adjacent to the reconstructed Park Avenue viaduct and the 2nd Ave Subway entrance pavilion will stimulate economic and retail growth.



THE SMILE

Architectural brilliance meets community vibrancy at The Smile Building, symbolizing East Harlem's dynamic energy this 233 unit luxury building proves the area is ready for premium design applications.



ONE EAST HARLEM

A beacon of mixed-use innovation, 201 E 125th Street showcases the future of East Harlem's live-work-play ecosystem with 404 luxury units completed in 2022.

FOR MORE INFORMATION, PLEASE CONTACT:

ANTHONY GAGLIANO
anthony@srpbrokers.com
917-446-4400

BRYON RUSSELL
bryon@srpbrokers.com
646-479-2704



The information contained herein has been obtained from sources believed to be reliable but is not guaranteed. Strategic Realty Partners and its agents make no representations or warranties, express or implied, as to the accuracy, completeness, or suitability of the information. All interested parties are responsible for conducting their own independent investigation and verification of all data, including but not limited to square footage, zoning, land use, and financial projections. This offering is subject to errors, omissions, prior sale or lease, change in price or terms, and withdrawal without notice.

NEIGHBORHOOD OVERVIEW

228-246 EAST 122ND STREET, NEW YORK, NY 10035



JCS REALTY DEVELOPMENT

JCS Realty has recently commenced construction on its 614-unit residential development at 180 East 125th Street - the long vacant, former Pathmark supermarket site previously held by Extell Development. This 513,000 SF development is projected to be completed Fall of 2026.



MEMORIAL SLOAN KETTERING'S NEW YORK PROTON CENTER

Pioneering healthcare innovation, the New York Proton Center anchors East Harlem as a hub for cutting-edge technology and life-changing treatments. A leading cancer treatment facility, it is the first and only proton therapy center in New York state.



THE LABS ON 121

Completed in 2024, this 160,000 SF, Class-A commercial building located at 2226 Third Avenue offers spaces for both life science lab and office uses.



HAP 10

HAP 10 is a 137,000 SF luxury residential building comprised of 108 units plus ground floor retail. Located at 2211 Third Avenue it sits on the corner of Third Avenue & 121st Street.

FOR MORE INFORMATION, PLEASE CONTACT:

ANTHONY GAGLIANO
anthony@srpbrokers.com
917-446-4400

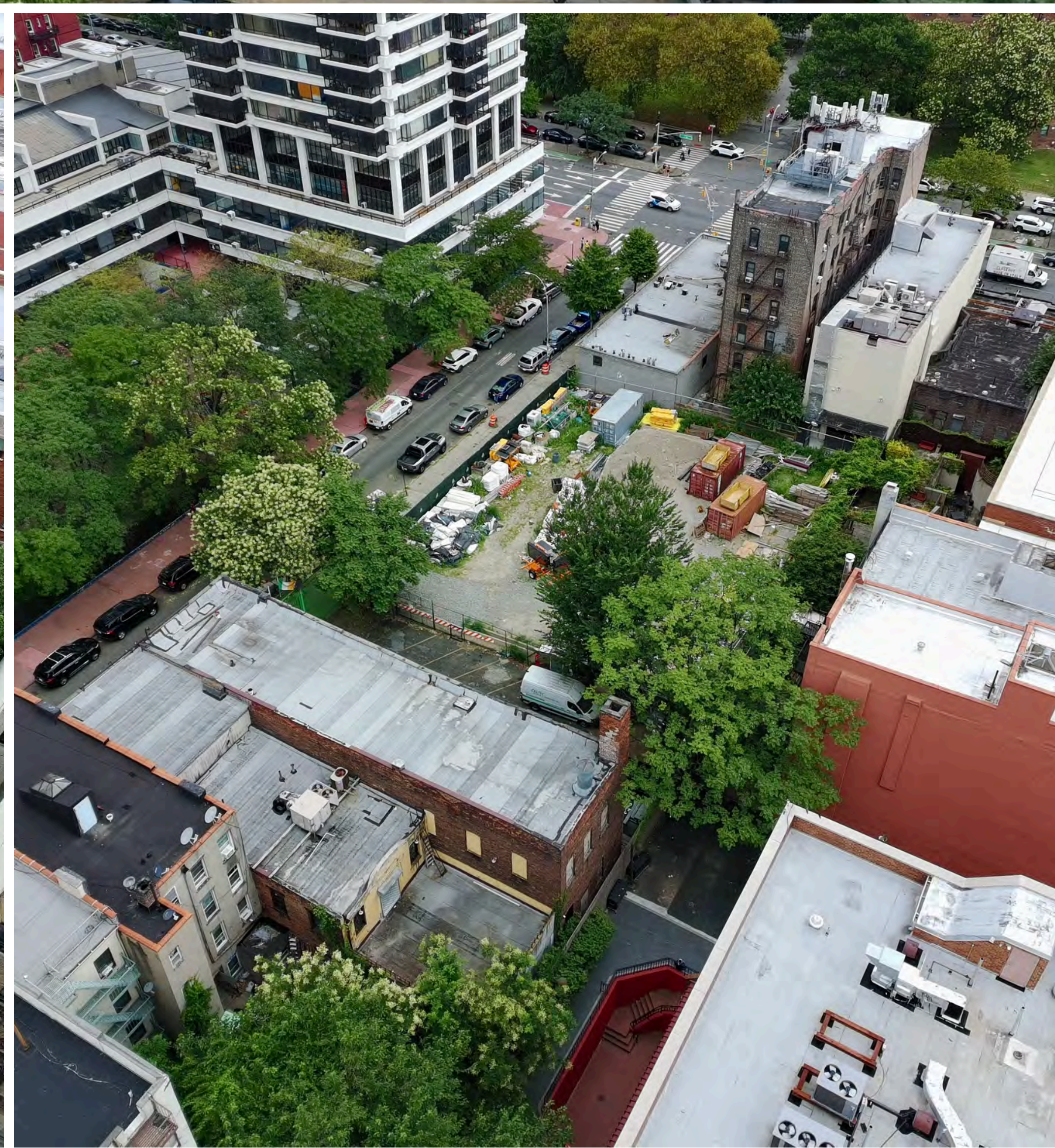
BRYON RUSSELL
bryon@srpbrokers.com
646-479-2704



228-246 EAST 122ND STREET NEW YORK, NY 10035



210' Wide | 106,426 Buildable SF | Opportunity Zone Development Site | East Harlem



FOR MORE INFORMATION, PLEASE CONTACT:

ANTHONY GAGLIANO
anthony@srpbrokers.com
917-446-4400

BRYON RUSSELL
bryon@srpbrokers.com
646-479-2704



The information contained herein has been obtained from sources believed to be reliable but is not guaranteed. Strategic Realty Partners and its agents make no representations or warranties, express or implied, as to the accuracy, completeness, or suitability of the information. All interested parties are responsible for conducting their own independent investigation and verification of all data, including but not limited to square footage, zoning, land use, and financial projections. This offering is subject to errors, omissions, prior sale or lease, change in price or terms, and withdrawal without notice.

228-246 EAST 122ND STREET NEW YORK, NY 10035



210' Wide | 106,426 Buildable SF | Opportunity Zone Development Site | East Harlem



Anthony Gagliano
anthony@srpbrokers.com
917-446-4400



Bryon Russell
bryon@srpbrokers.com
646-479-2704

STRATEGIC REALTY PARTNERS YOUR DEVELOPMENT SITE SPECIALISTS



Visit Us:

7 W 36th Street, Suite 11R
New York, NY 10018



Contact:

Tel: 212-634-9199
Email: info@srpbrokers.com
Fax: 917-210-4133

LEARN MORE



The information contained herein has been obtained from sources believed to be reliable but is not guaranteed. Strategic Realty Partners and its agents make no representations or warranties, express or implied, as to the accuracy, completeness, or suitability of the information. All interested parties are responsible for conducting their own independent investigation and verification of all data, including but not limited to square footage, zoning, land use, and financial projections. This offering is subject to errors, omissions, prior sale or lease, change in price or terms, and withdrawal without notice.