

FOR SALE

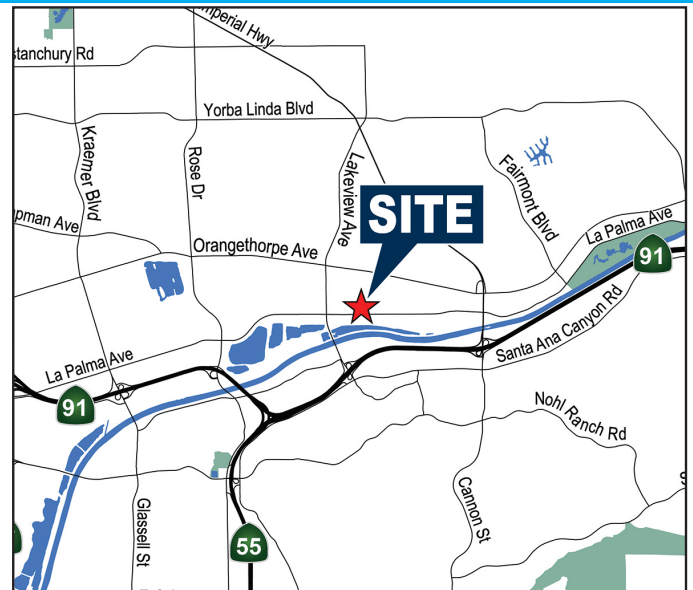
±8,136 SF

4887 EAST LA PALMA | SUITE 701 AND 702 | ANAHEIM | CA



PROPERTY FEATURES

- Major Street Frontage
- High Image Building
- 3:1,000 Parking Ratio (In Common)
- Two Industrial Condos totaling ±8,136 SF with Two Separate Entrances
- Two Sets of Restrooms
- Minimum 24' Warehouse Clearance
- Two (2) Ground Level Doors
- 100A, 120/208V 3 Phase Power (Verify)
- Excellent Access to 91 and 55 Freeways
- Low monthly association dues



JACK FARIS, SIOR
Senior Vice President | Partner
License #00912766
(714) 935.2318
Jfaris@voitco.com



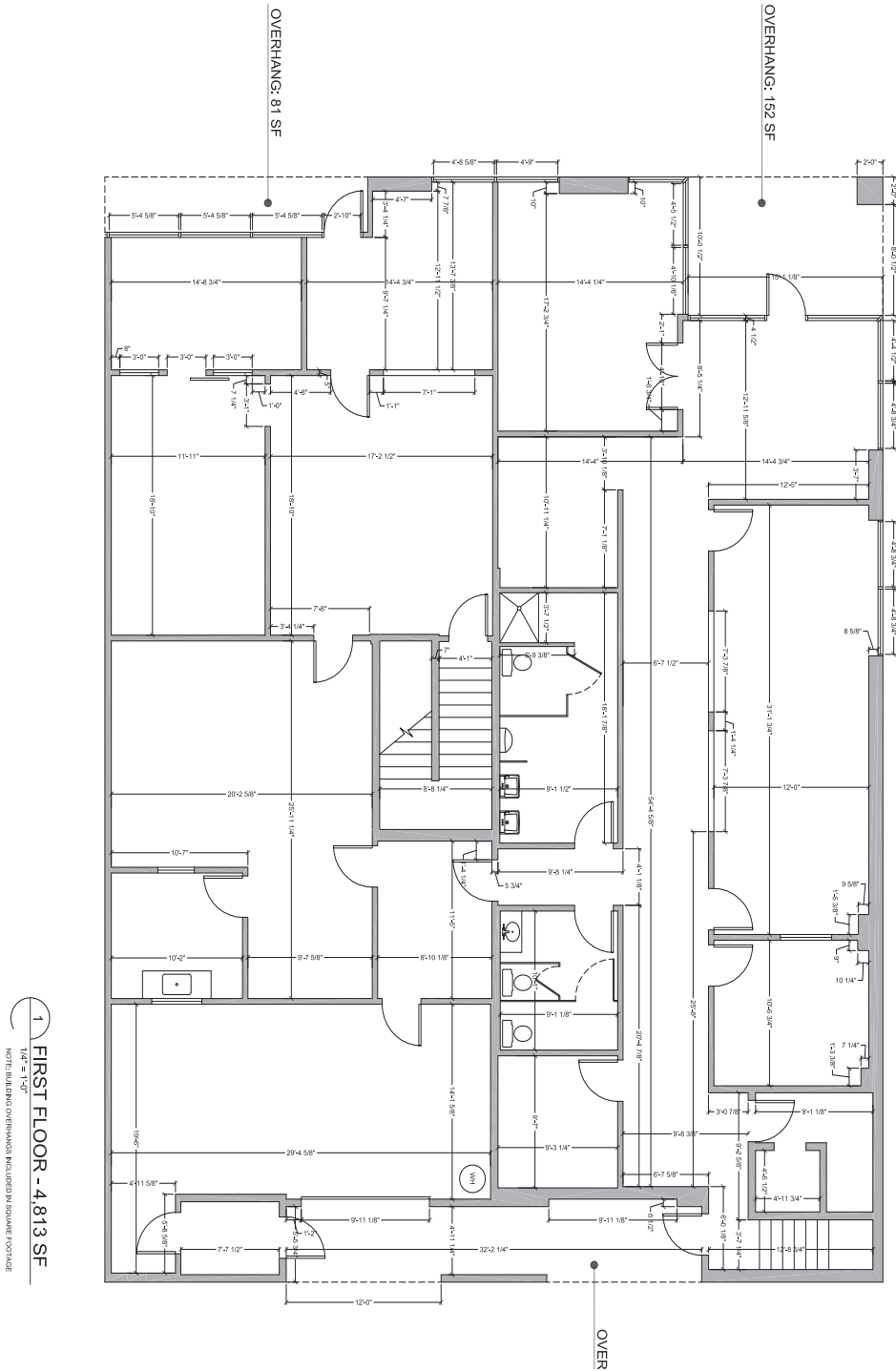
DREW ZAVALA
Associate
License #02173846
(949) 263-5314
Dzavala@voitco.com

Voit
REAL ESTATE SERVICES

2020 Main Street, Suite 100 | Irvine, California 92614 | (949) 851-5100 | (949) 261-9092 fax | Lic #01991785 | www.VoitCo.com

The information contained herein has been obtained from sources we deem reliable. While we have no reason to doubt its accuracy, we do not guarantee it. Licensed as Real Estate Salespersons by the DRE. ©2024 Voit Real Estate

FIRST FLOOR



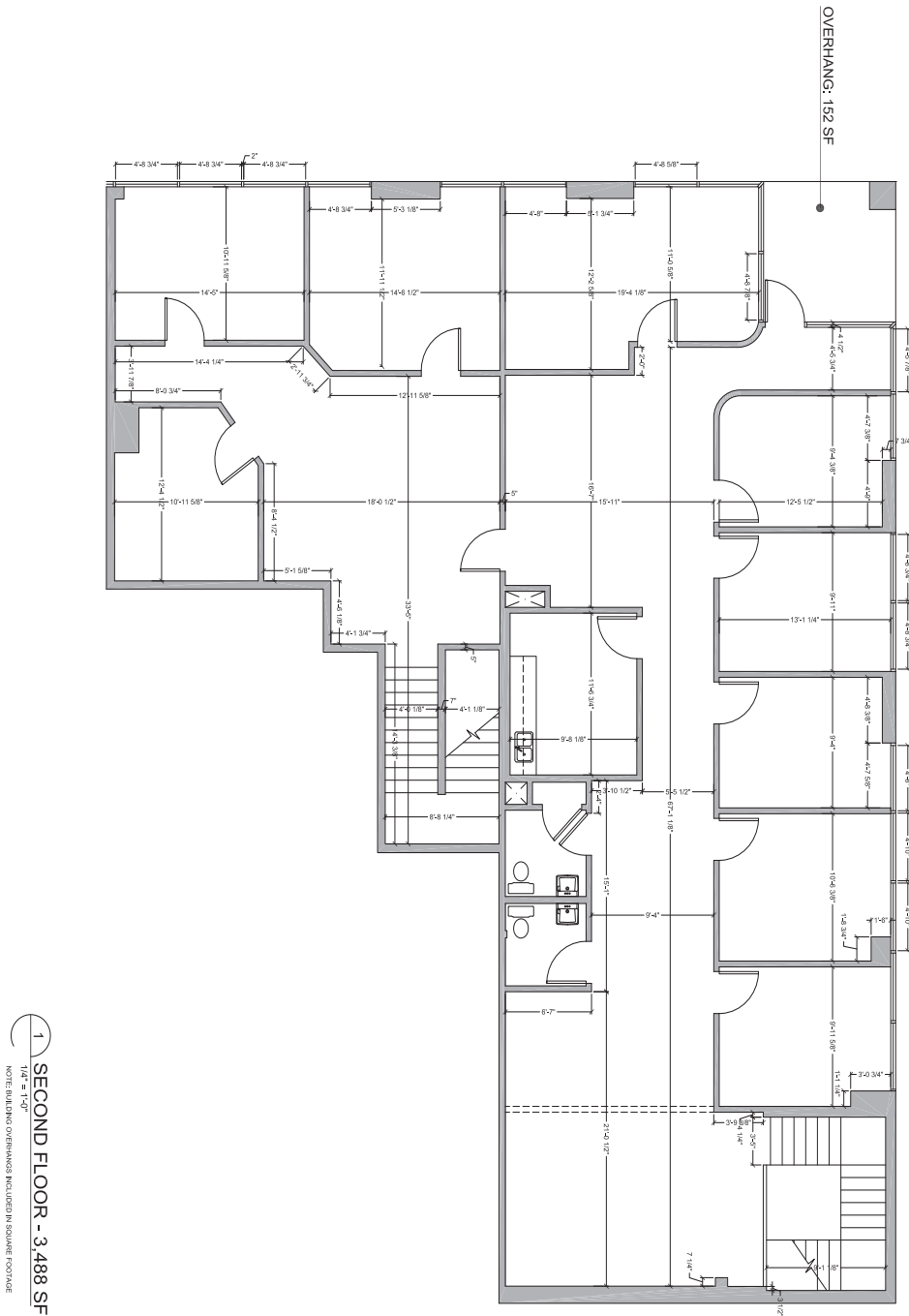
JACK FARIS, SIOR
 Senior Vice President | Partner
 License #00912766
 (714) 935.2318
 Jfaris@voitco.com



DREW ZAVALA
 Associate
 License #02173846
 (949) 263-5314
 Dzavala@voitco.com



SECOND FLOOR



JACK FARIS, SIOR
Senior Vice President | Partner
License #00912766
(714) 935.2318
Jfaris@voitco.com



DREW ZAVALA
Associate
License #02173846
(949) 263-5314
Dzavala@voitco.com

