



BERKSHIRE HATHAWAY
HomeServices
Indiana Realty

3302 WESTFIELD RD. (SR32)

NOBLESVILLE, IN 46062



Tim O'Connor

REALTOR® | **317.590.3785**
toconnor@bhhsin.com

THE O'CONNOR TEAM
TRUSTED REAL ESTATE EXPERTS

3302 WESTFIELD RD. (SR 32) NOBLESVILLE, IN 46062

DEMOGRAPHICS

POPULATION

2010

2 MILES: 11,804

5 MILES: 91,863

10 MILES: 297,717

2022

2 MILES: 18,781

5 MILES: 122,130

10 MILES: 366,014

2027 (Projection)

2 MILES: 21,789

5 MILES: 139,475

10 MILES: 412,403

INCOME

Average Household

2 MILES: \$127,972

5 MILES: \$126,837

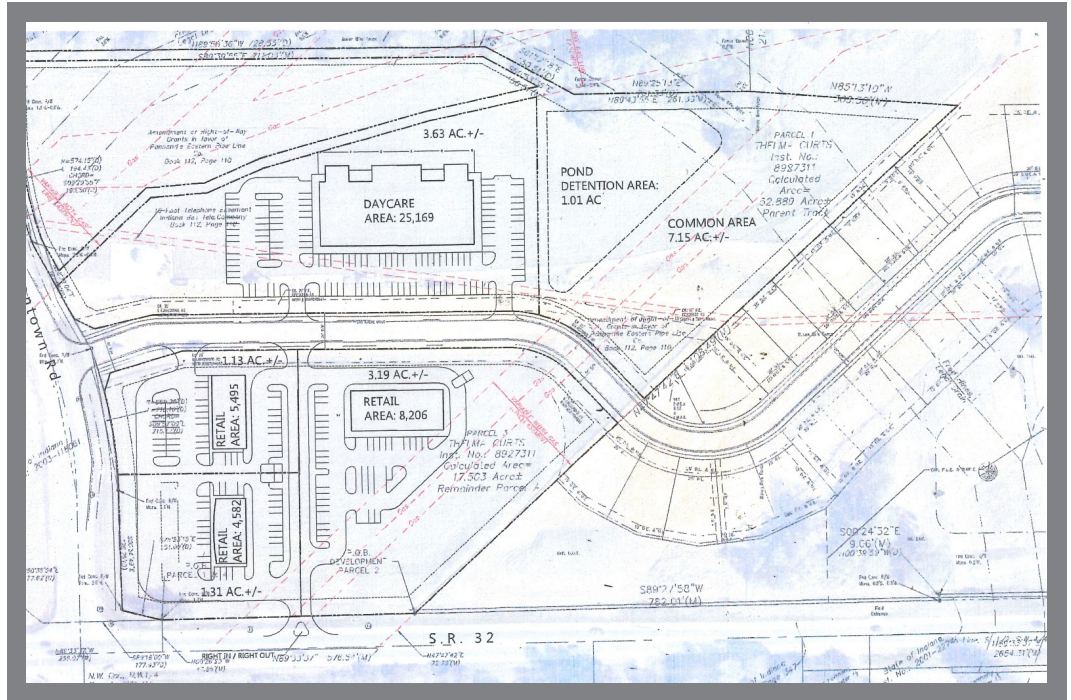
10 MILES: \$123,888

Median Household

2 MILES: \$101,217

5 MILES: \$102,374

10 MILES: \$98,038



PROPERTY DESCRIPTION

- Potential for Retail, Office, Day Care, or Medical Uses
- 576' of frontage on SR 32
- Northeast corner of Moontown Rd. and SR 32
- Outlots on SR 32 are \$350,000 per acre
- Land to the North is \$100,000 per acre



Tim O'Connor

REALTOR® | 317.590.3785
toconnor@bhhsin.com



BERKSHIRE HATHAWAY
HomeServices
Indiana Realty

THE O'CONNOR TEAM
TRUSTED REAL ESTATE EXPERTS