

LEASE

Kaloko Commercial Cr. - Lot 19

73-5641 MAIAU STREET

Kailua Kona, HI 96740

PRESENTED BY:

GREGORY OGIN

O: 808.329.6446

gogin@svn.com

HI #RB-16053

SUSIE SCRIBNER

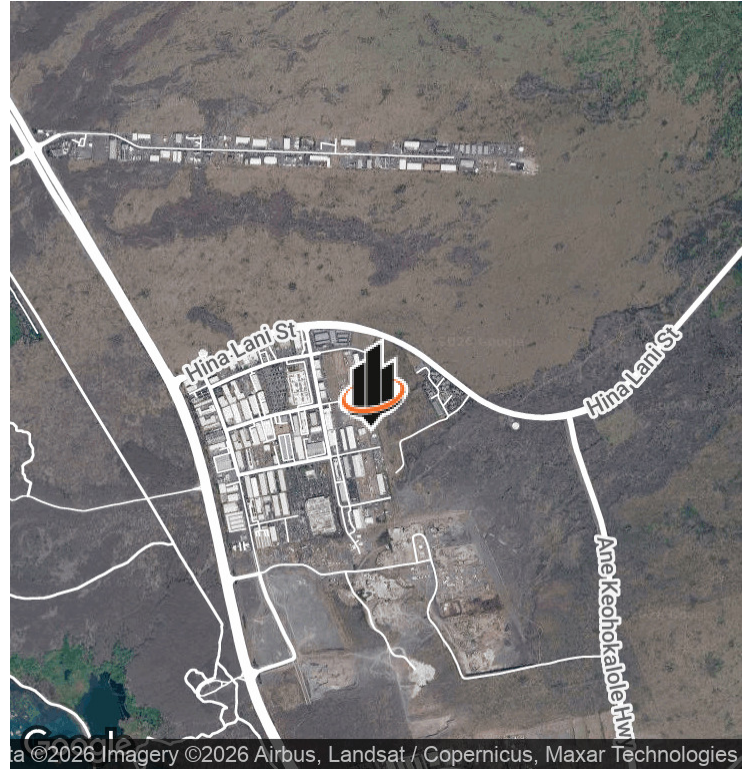
O: 805.403.0301

susie.scribner@svn.com

Hawaii #RS-84227



PROPERTY SUMMARY



OFFERING SUMMARY

LEASE RATE:	\$0.25 SF/month (NNN)
AVAILABLE SF:	52,098 SF
LOT SIZE:	1.196 Acres

PROPERTY DESCRIPTION

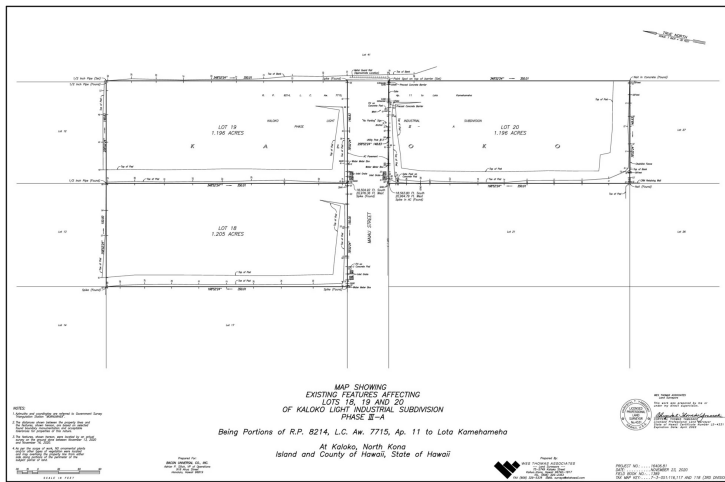
Welcome to a PRIME LOT location offering access to diverse industrial opportunities, including manufacturing, warehousing, and distribution entities. Central to the Kona International Airport, NELHA (Natural Energy Laboratory of Hawaii), Honokohau Harbor and minutes drive to Kailua-Kona's residential, business, retail, and visitor centers.

PROPERTY HIGHLIGHTS

- Located in Kaloko Light Industrial
- Graded Vacant Land
- Fully fenced with a gate
- Utilities at the Street
- Zoned MCX1-A
- \$0.25/SF/Mo + \$1201/MO for RPT
- Utilities installation at tenant's cost

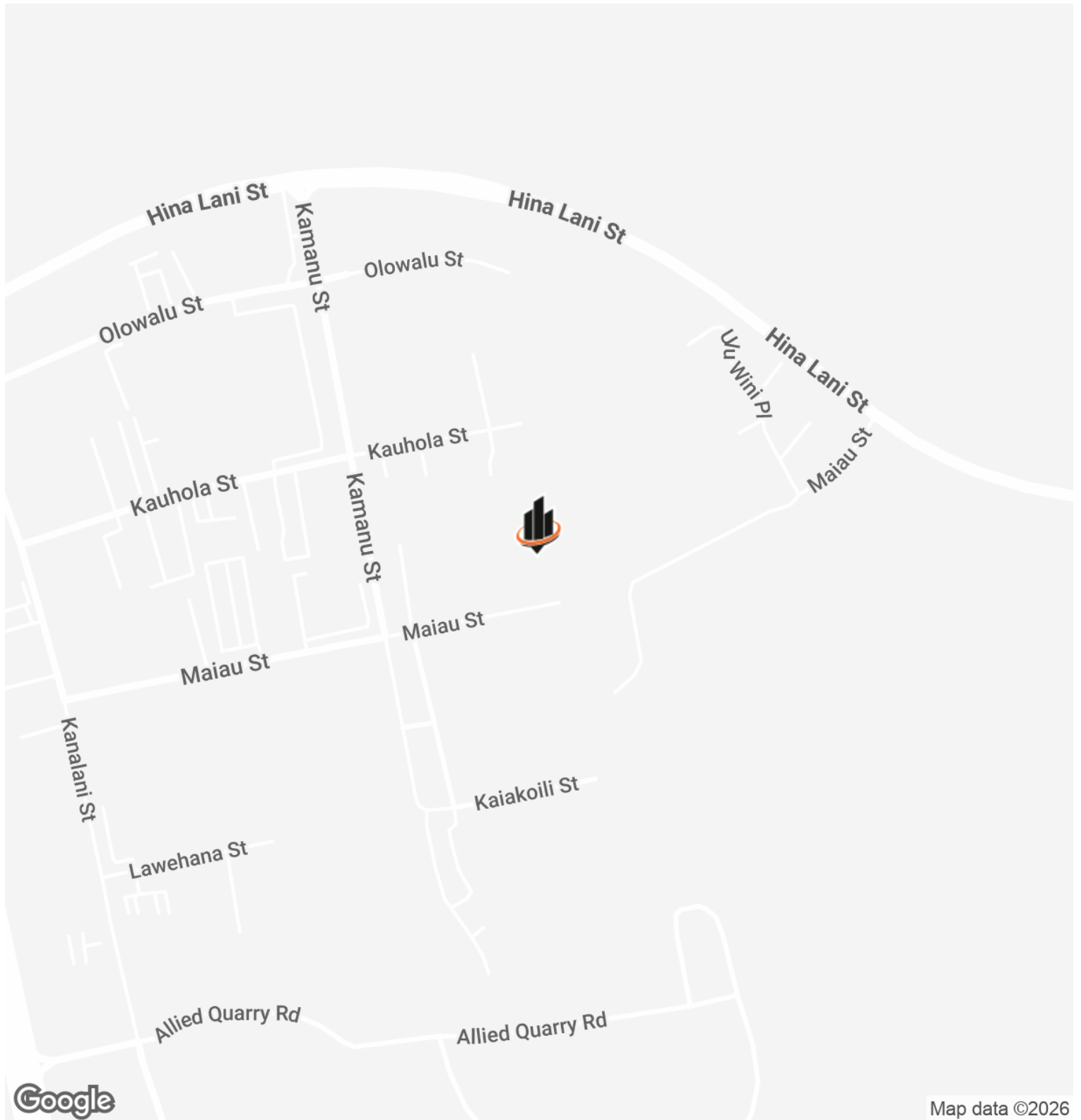
GREGORY OGIN **SUSIE SCRIBNER**
O: 808.329.6446 O: 805.403.0301
gogin@svn.com susie.scribner@svn.com
HI #RB-16053 Hawaii #RS-84227

ADDITIONAL PHOTOS



GREGORY OGIN **SUSIE SCRIBNER**
 O: 808.329.6446 O: 805.403.0301
 gogin@svn.com susie.scribner@svn.com
 HI #RB-16053 Hawaii #RS-84227

LOCATION MAP



GREGORY OGIN

O: 808.329.6446

gogin@svn.com

HI #RB-16053

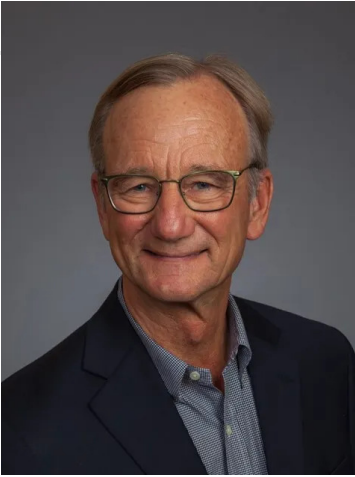
SUSIE SCRIBNER

O: 805.403.0301

susie.scribner@svn.com

Hawaii #RS-84227

MEET THE TEAM



GREGORY OGIN

Principal & Managing Director

Direct: 808.329.6446

Cell: 808.987.6446

gogin@svn.com

HI #RB-16053



SUSIE SCRIBNER

Associate Advisor

Direct: 805.403.0301

Cell: 805.403.0301

susie.scribner@svn.com

Hawaii #RS-84227

GREGORY OGIN

O: 808.329.6446

gogin@svn.com

HI #RB-16053

SUSIE SCRIBNER

O: 805.403.0301

susie.scribner@svn.com

Hawaii #RS-84227