



3055 N Williamston Rd - Parcel B

3055 N Williamston Road Parcel B
Williamston, Michigan 48895

Property Highlights

- Parcel B: Zoned Commercial | 2.15 Acres | \$249,000
- Parcel A: Zoned Office | 3.8 Acres | \$395,000
- High visibility location near I-96
- Between Tractor Supply and Dollar General (currently under construction)
- Properties are within the city limits between I-96 and downtown Williamston
- Outline of parcel is approximate

Offering Summary

Sale Price:	\$249,000
Lot Size:	2.15 Acres

For More Information



Dave Robinson

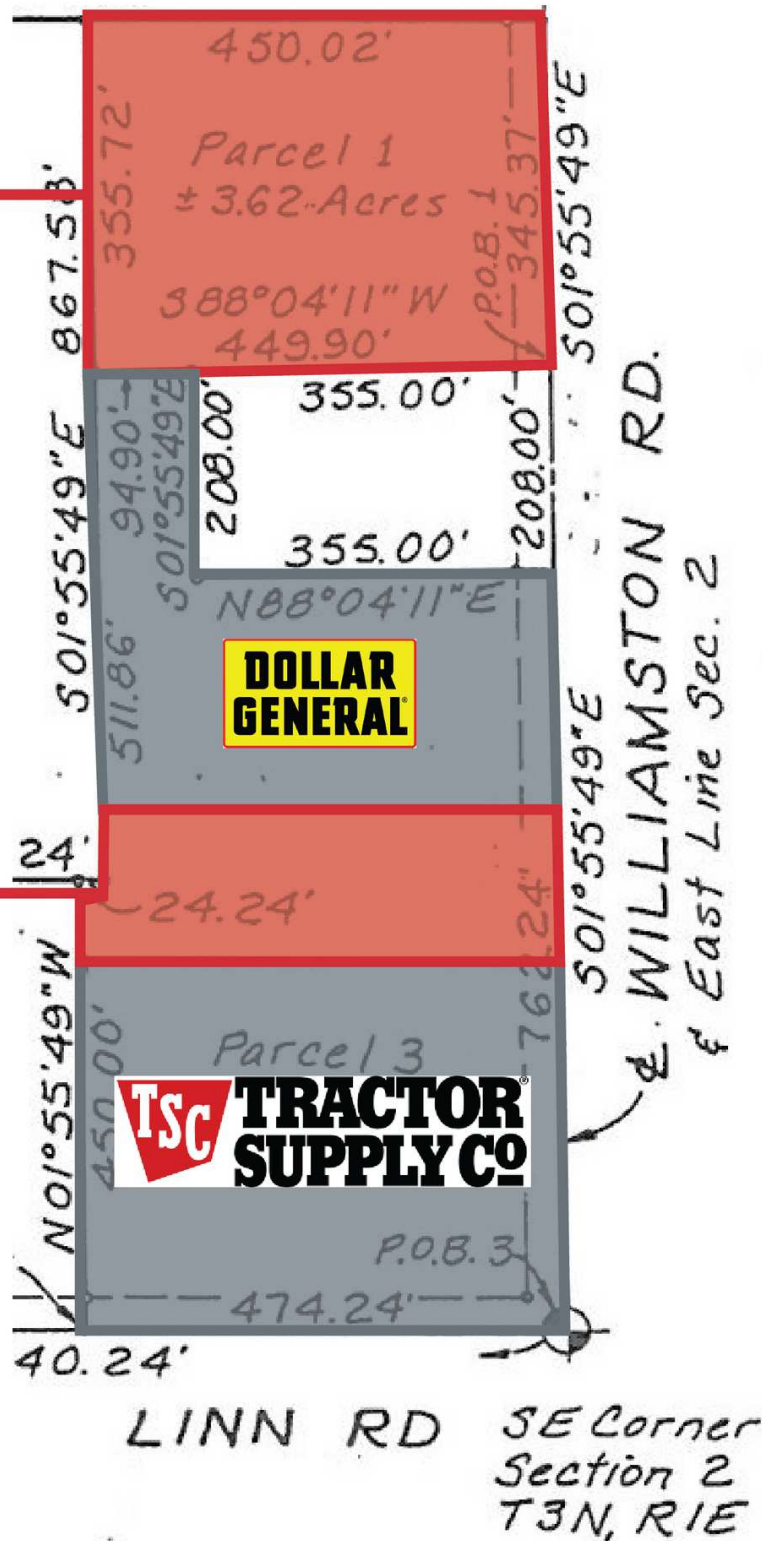
Associate Broker

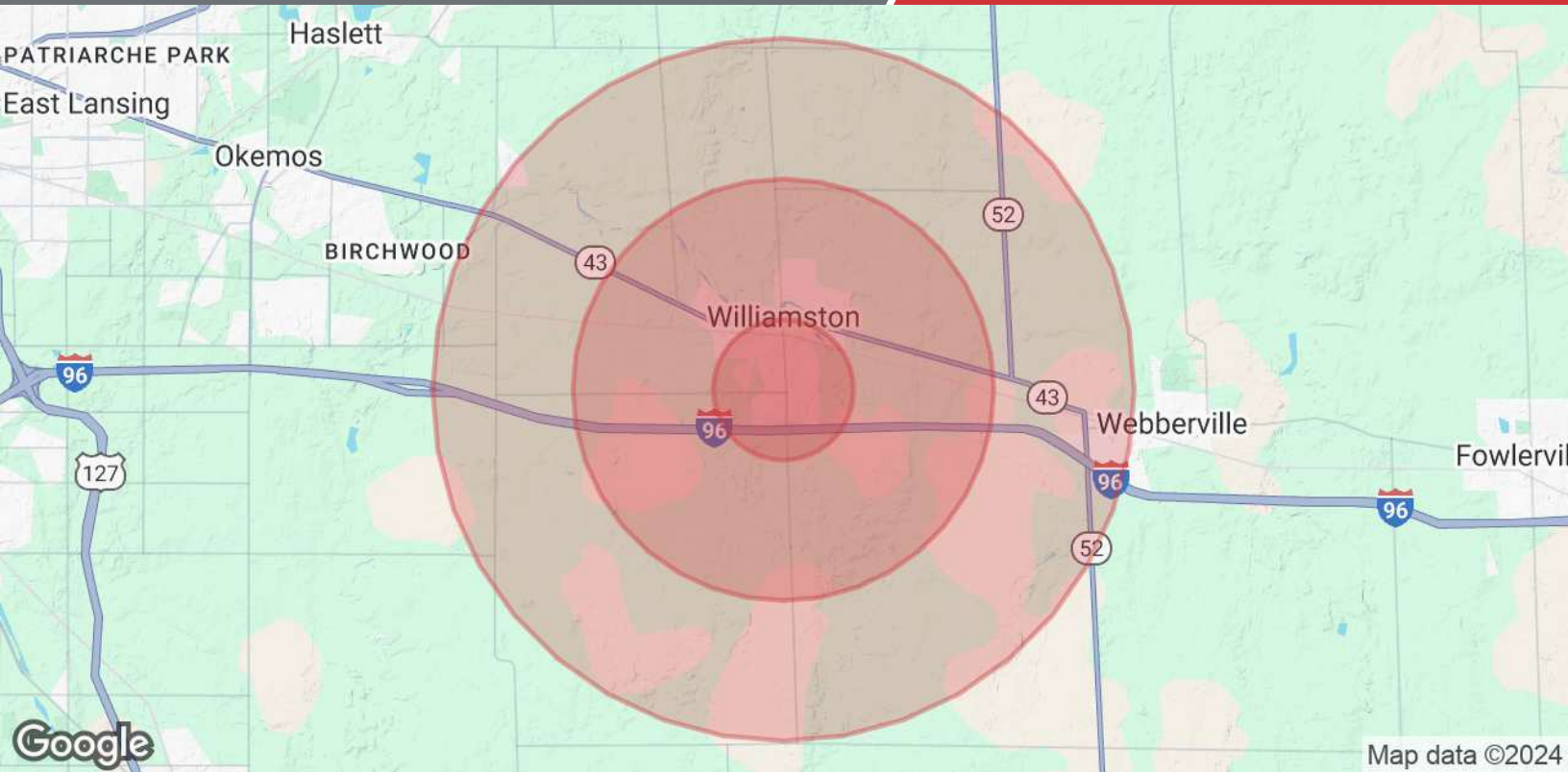
O: 517 487 9222 | C: 517 599 6846

drobinson@naimidmichigan.com

Zoned Office

Zoned Commercial





Population	1 Mile	3 Miles	5 Miles
Total Population	1,716	7,418	11,403
Average Age	40	42	42
Average Age (Male)	39	41	41
Average Age (Female)	42	43	43
Households & Income	1 Mile	3 Miles	5 Miles
Total Households	752	2,992	4,509
# of Persons per HH	2.3	2.5	2.5
Average HH Income	\$101,903	\$133,774	\$132,693
Average House Value	\$269,569	\$324,153	\$318,989

Demographics data derived from AlphaMap