



OFFICE BUILDING FOR LEASE

OYSTER POINT COMMONS

11719B JEFFERSON AVENUE, NEWPORT NEWS, VA 23608



OYSTER POINT COMMONS

PROPERTY SUMMARY



VIDEO

PROPERTY DESCRIPTION

Located in Oyster Point Business District, this complex sits at the high traffic intersection of Jefferson Ave & Pilot House Road. These three buildings feature ample parking, two entrances with visibility and monument signage on Jefferson Avenue. On-site Management with good walkability to a variety of restaurants and residential neighborhoods. Close to I-64 and within blocks of Riverside Hospital & Sentara Port Warwick, Jefferson Lab & Tech Center. Short drive to Newport News/ Williamsburg Airport.

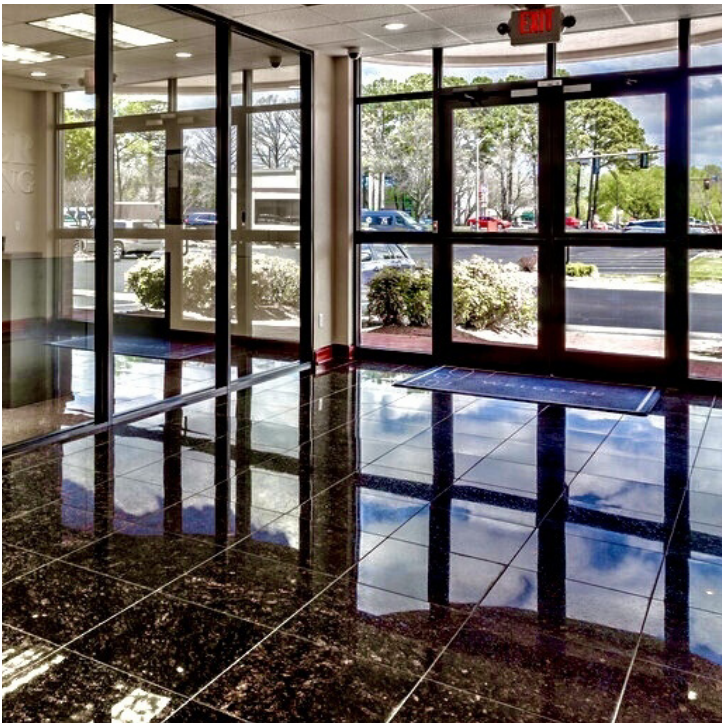
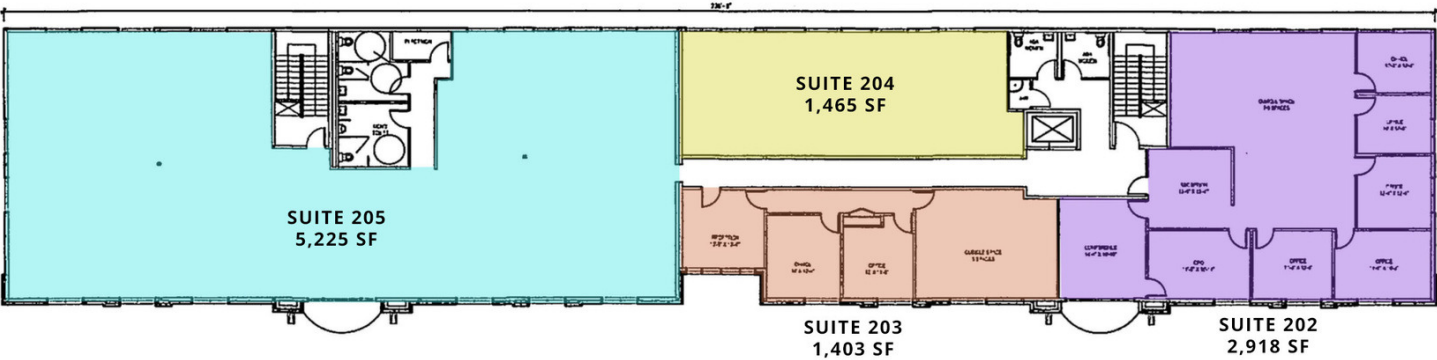
PROPERTY HIGHLIGHTS

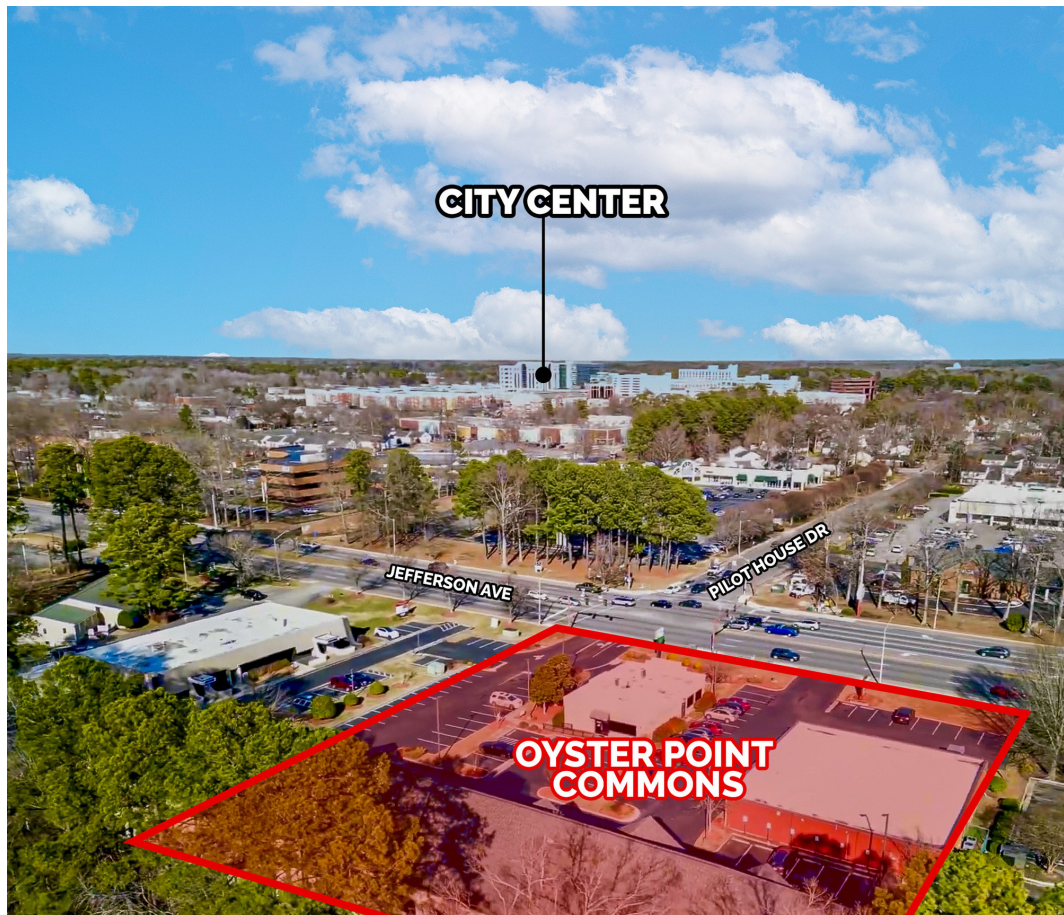
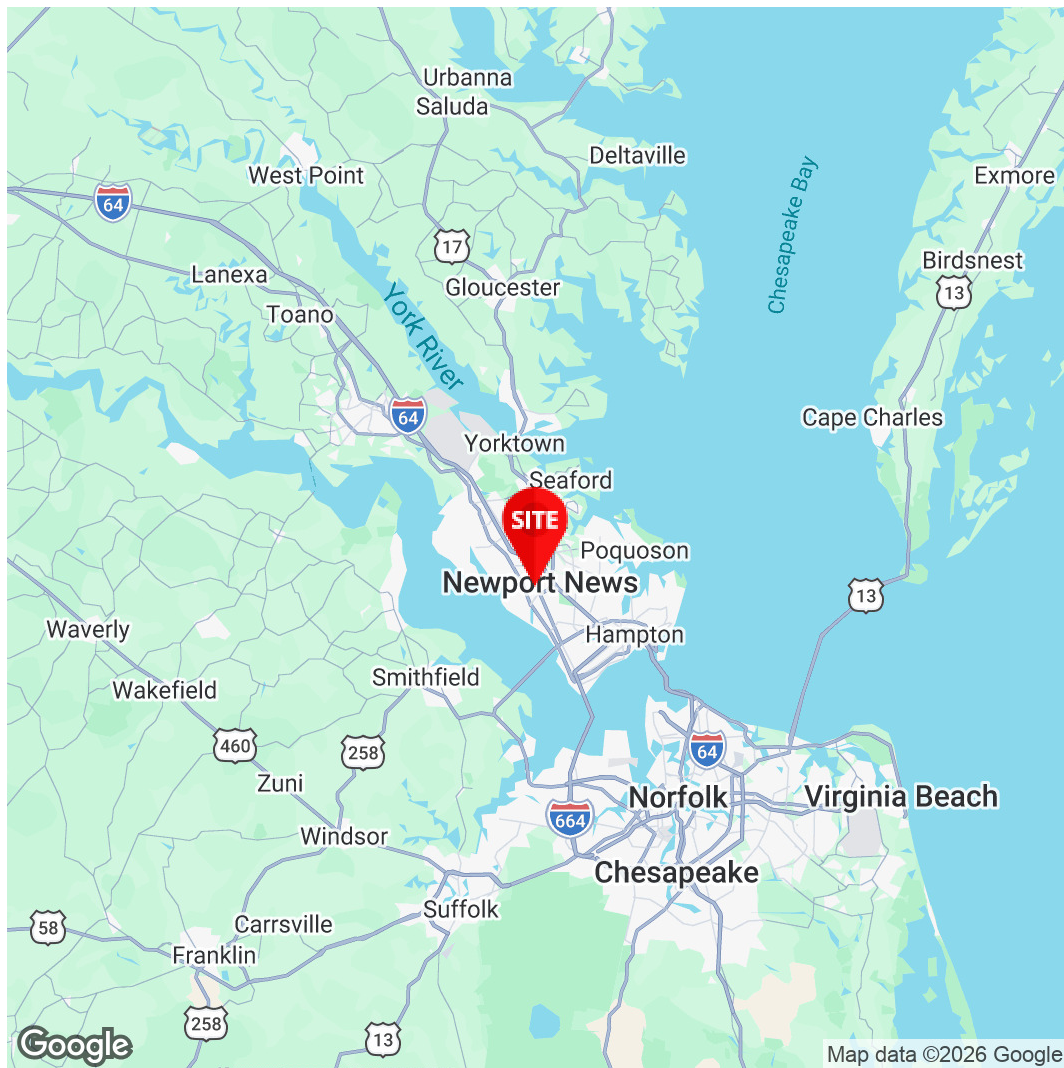
- Monument signage on Jefferson Avenue
- Building signage possibility
- Two entrances with ample parking
- Dedicated Signalized Intersection
- Close proximity to Oyster Point City Center
- Easy ingress/egress to I64

SPACES	LEASE RATE	SPACE SIZE
11719 B - Suite 107	\$19.50 SF/yr	754 SF
11719 B - 2nd Floor (Subdivisible)	\$17.50 SF/yr	11,000 SF

OYSTER POINT COMMONS

11719B | SECOND FLOOR | SAMPLE SUBDIVISION PLAN





Elizabeth C. Paasch
 AVP, Office Leasing and
 Sales
 757.333.4322
epaasch@divaris.com

The information contained herein should be considered confidential and remains the sole property of Divaris Real Estate, Inc. at all times. Although every effort has been made to ensure accuracy, no liability will be accepted for any errors or omissions. Disclosure of any information contained herein is prohibited except with the express written permission of Divaris Real Estate, Inc.