



For Lease  
Space Available

715 E. Sprague Ave., Spokane, Washington 99202



### Property Features

- Office/Warehouse Building
- Zoned GC-150
- Centrally Located with Good Access to I-90 & the U District
- Excellent Parking

### Lease Rate:

Suite 40 - 8,525 SF ±

- \$4,700/mo NNN
- 7,060 SF Warehouse
- 1,515 SF Office
- Loading Dock
- Drive-in Ramp

For More Information:

**Darren Slackman, SIOR**

Managing Broker

+1 509 622 3595

dslackman@naiblack.com

**Jon Jeffreys, SIOR**

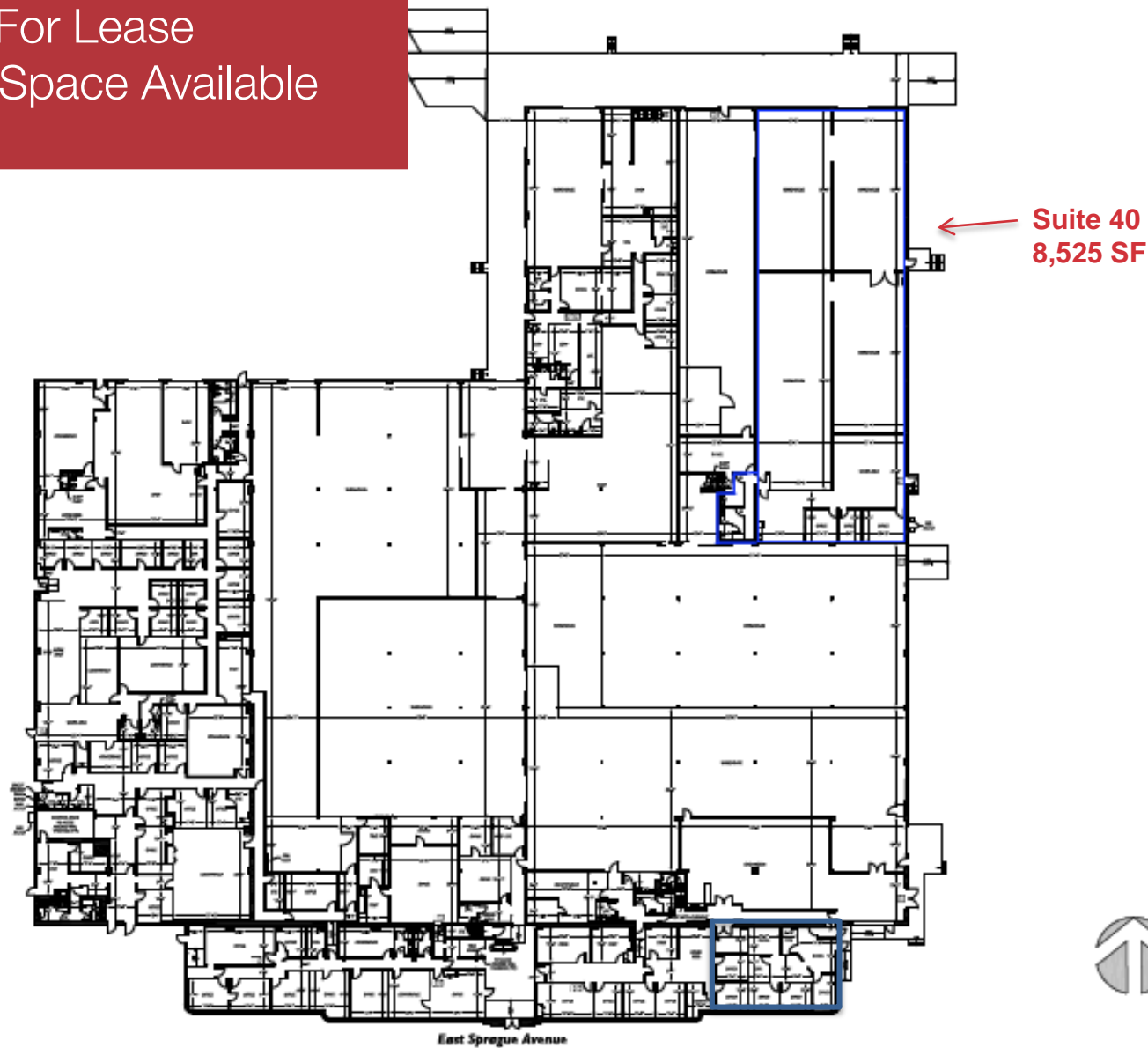
Broker

+1 509 622 3566

jjeffreys@naiblack.com

NO WARRANTY OR REPRESENTATION, EXPRESS OR IMPLIED, IS MADE AS TO THE ACCURACY OF THE INFORMATION CONTAINED HEREIN, AND THE SAME IS SUBMITTED SUBJECT TO ERRORS, OMISSIONS, CHANGE OF PRICE, RENTAL OR OTHER CONDITIONS, PRIOR SALE, LEASE OR FINANCING, OR WITHDRAWAL WITHOUT NOTICE, AND OF ANY SPECIAL LISTING CONDITIONS IMPOSED BY OUR PRINCIPALS NO WARRANTIES OR REPRESENTATIONS ARE MADE AS TO THE CONDITION OF THE PROPERTY OR ANY HAZARDS CONTAINED THEREIN OR ANY TO BE IMPLIED.

For Lease  
Office Space Available



<b>Client</b> Slvey Construction 18221 East Montgomery Drive Suite A Spokane, WA 99206	<b>Subject</b> Industrial Building 715 East Sprague Avenue Spokane, WA 99202	<b>Floor Plan</b> Floor	<b>Scale</b> 0 10 20 30 40	23 304.00000000000000 304.00000000000000 608 NW Olympic Blvd. Suite E Spokane, WA 99207 Measured: December 2014 Project: C15-178
---	---	----------------------------	-------------------------------	---



**Darren Slackman, SIOR**  
 Managing Broker  
 +1 509 622 3595  
 dslackman@naiblack.com

**Jon Jeffreys, SIOR**  
 Broker  
 +1 509 622 3566  
 jjeffreys@naiblack.com

Black Commercial, Inc.  
 107 South Howard Street  
 Spokane, Washington  
 +1 509 623 1000  
[naiblack.com](http://naiblack.com)