

HARVARD GARDEN OFFICE/MEDICAL SPACES FOR LEASE



4157 SOUTH HARVARD, TULSA, OK PEACHTREE SQUARE

SIZES

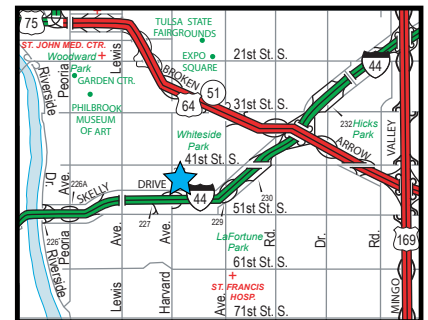
- 1,000-5,461 RSF space sizes
(Floor plan on back)

FEATURES

- Attractive colonial brick, garden office building
- Professional office finishes, upgraded lobbies/restrooms
- Spaces suitable for office, light medical, therapy and/or health clinics
- Overabundant surface parking, wraparound circulation
- Convenient outside entry to various spaces
- Competitive rates
- Popular Harvard Corridor Tulsa location
- Building security system
- Cox DSL Internet available to Building
- Tenant selection of paint/carpet finishes
- Local ownership and management
- 1 mile access north of Interstate 44



Harvard Sign Directory

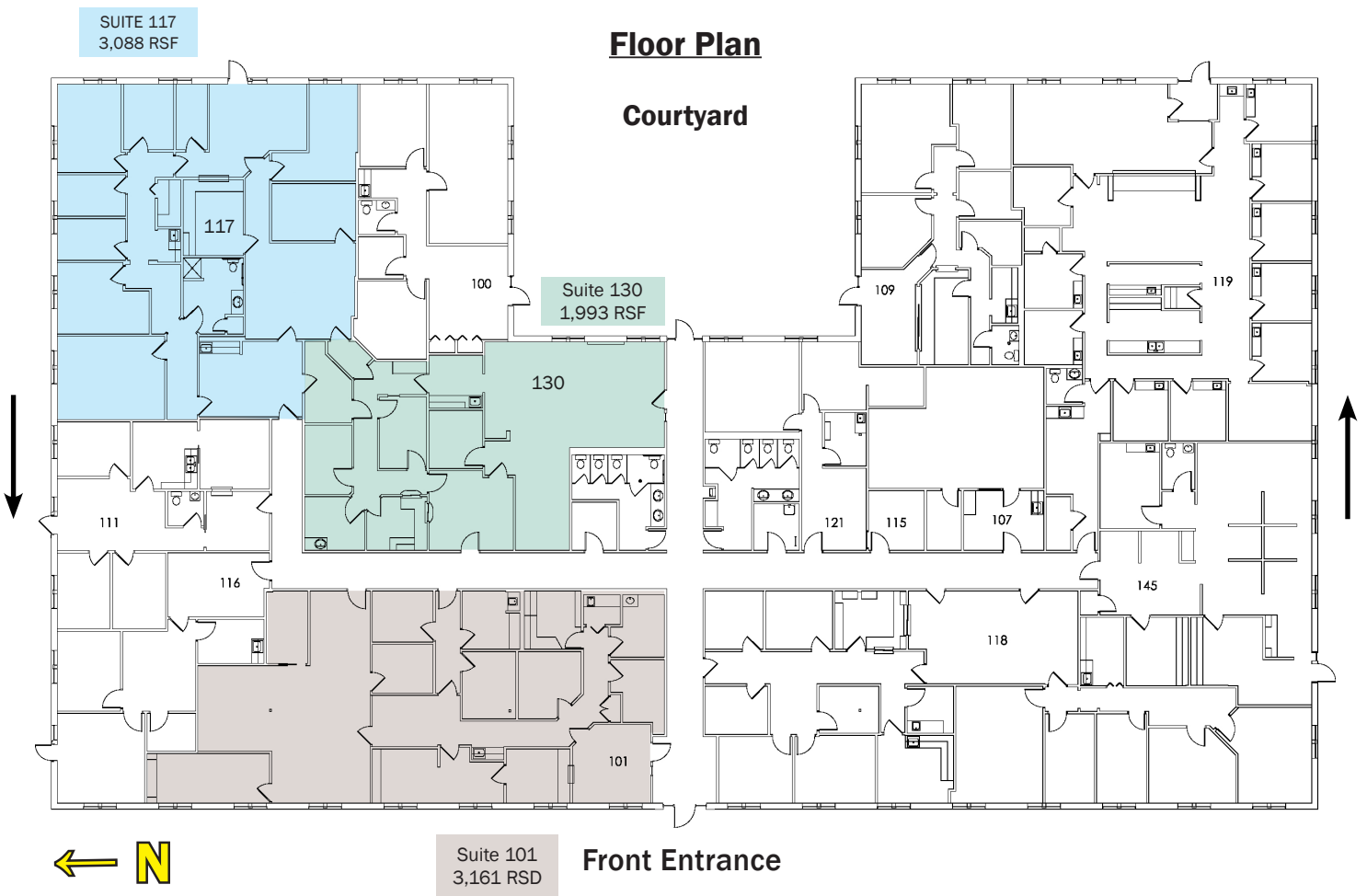


The information contained herein is believed to be accurate but is not guaranteed as to accuracy and may change or be updated without notice.

Contact: Monty Berry, CCIM

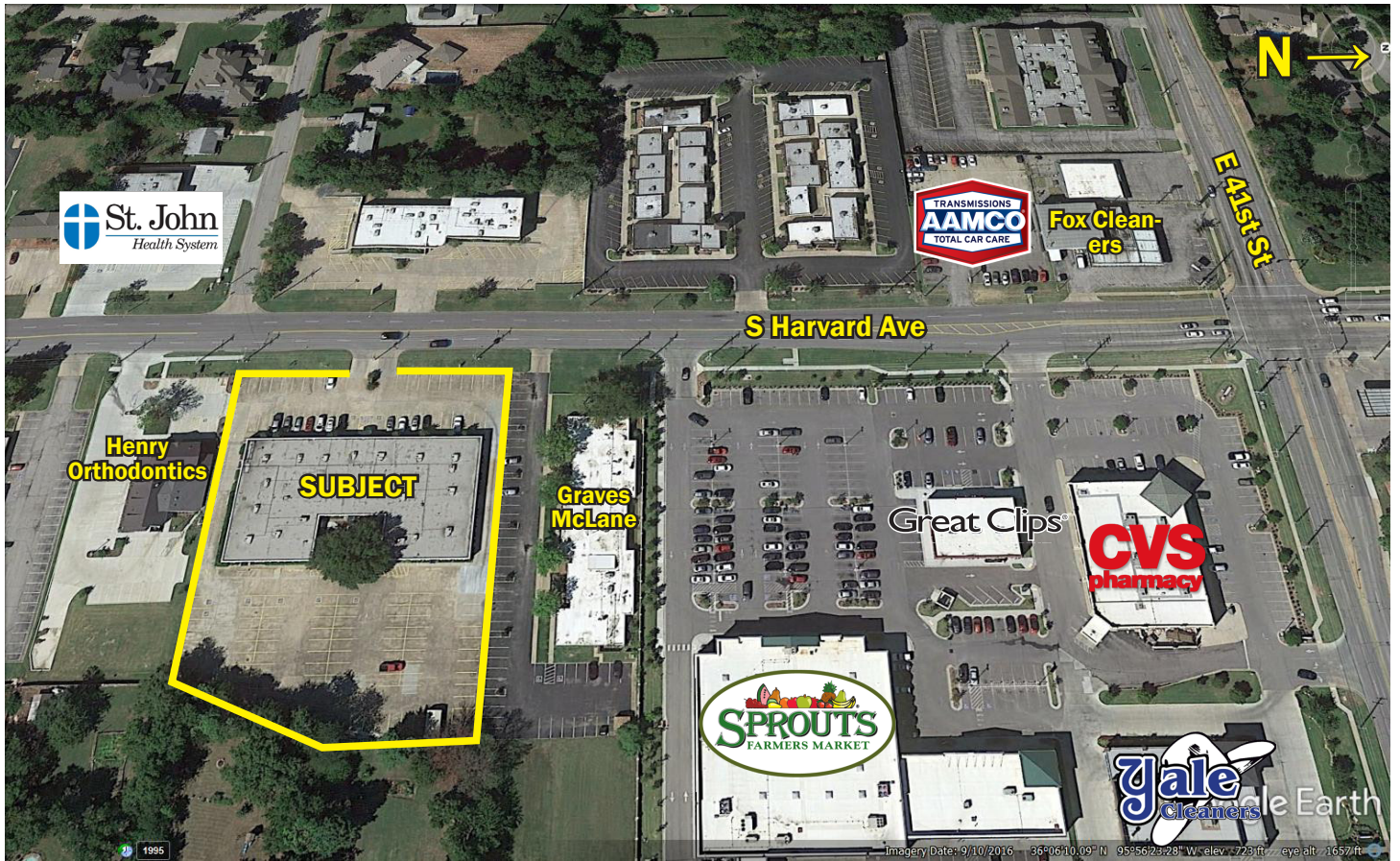
Office (918) 280-9900 | **Cell** (918) 695-4162 | **Fax** (918) 280-9902

E-mail Monty@EquitasRealty.com



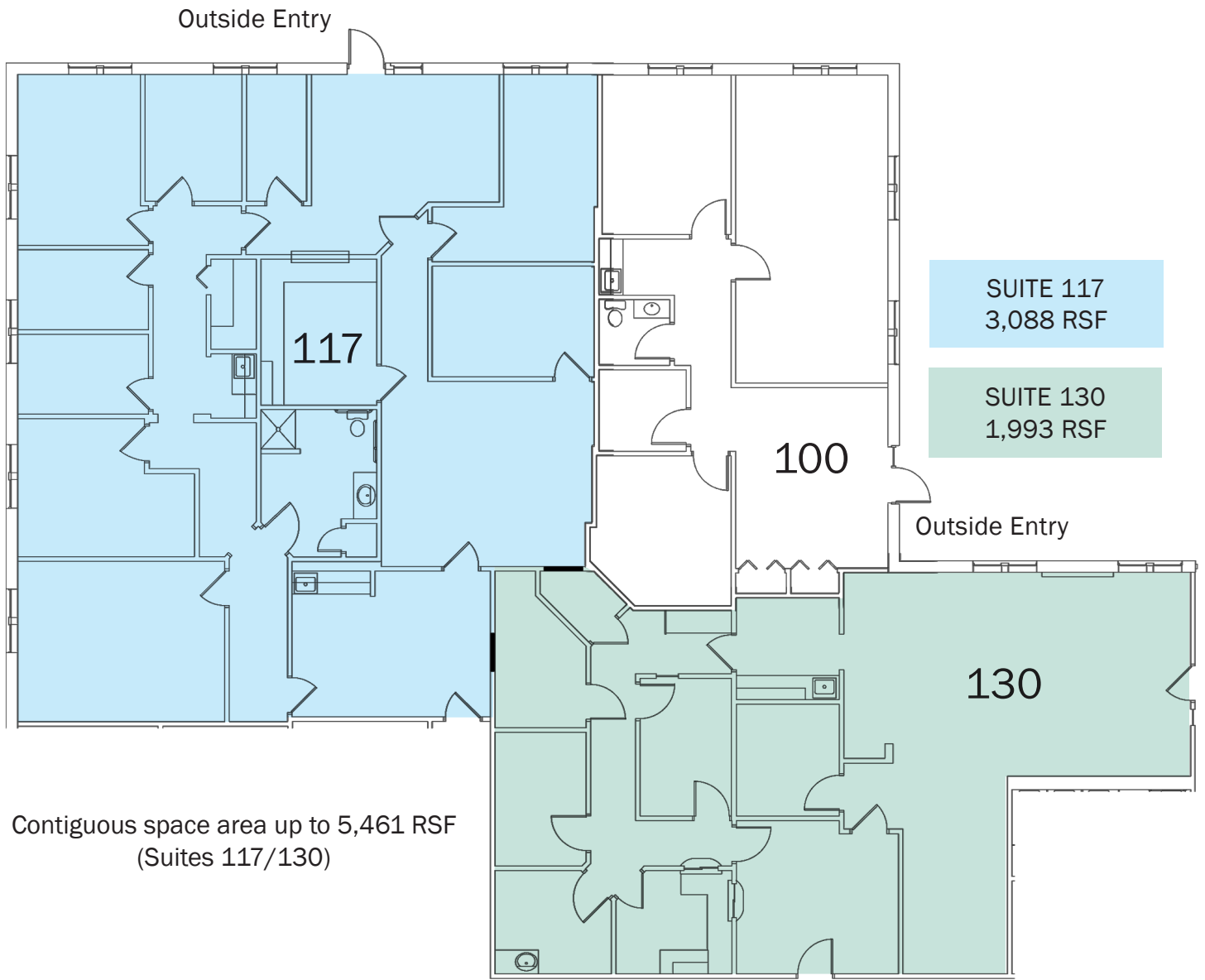
Courtyard and Suite 117 Separate Outside Entries

Aerial



Oversized Back Parking Area

Vacant Space Floor Plans



SUITE 101
3,161 RSF
(Divisible from 1,000 RSF ±)
1-2 Clinic Space Potential

