

For Lease

NAIDESCO

The Dorchester

665 S Skinker Blvd, St. Louis, MO 63105



Property Highlights



For Lease
1,405 SF & 1,096 SF



First-Floor Retail in
Luxury Apartments



Strong Area Traffic
Generators



Contact Broker
for Pricing

For more information, please contact:



William Barnes

d (314) 994 - 4401
c (314) 578 - 1708
wbarnes@naidesco.com



Michelle Goodwin, CCIM

d (314) 994 - 4944
c (636) 236 - 9802
mgoodwin@naidesco.com

NAIDESCO

8112 Maryland Ave, Suite 300
St. Louis, MO 63105
(314) 994 - 4800
naidesco.com

Property Features

- 1,405 SF former dental office
- 1,096 SF retail / gallery space
- Located on the first floor of The Dorchester, a 23-story luxury apartment community between Forest Park and the DeMun neighborhood
- Off-street customer and employee parking available
- Excellent proximity to I-64
- Strong area traffic generators including Forest Park, the DeMun neighborhood, SSM St. Mary's Hospital, the Delmar Loop, and Washington University

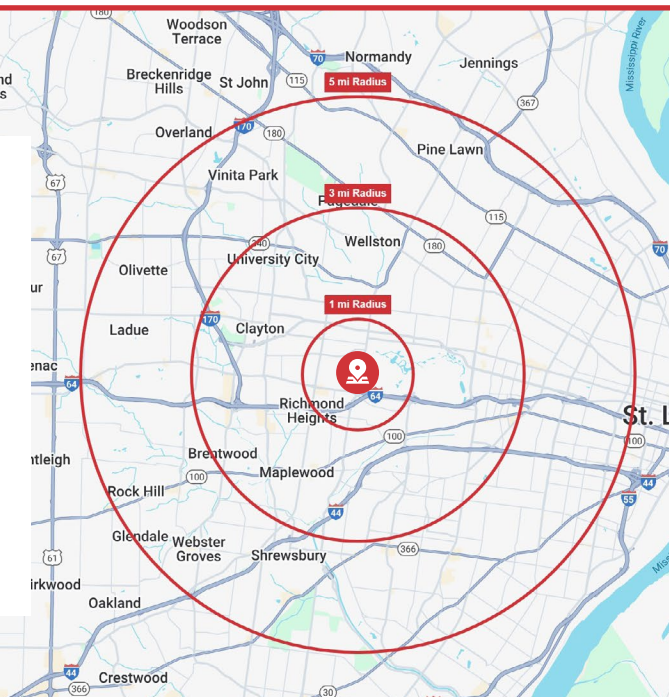
 **Lease Rate: Contact Broker**



Demographics

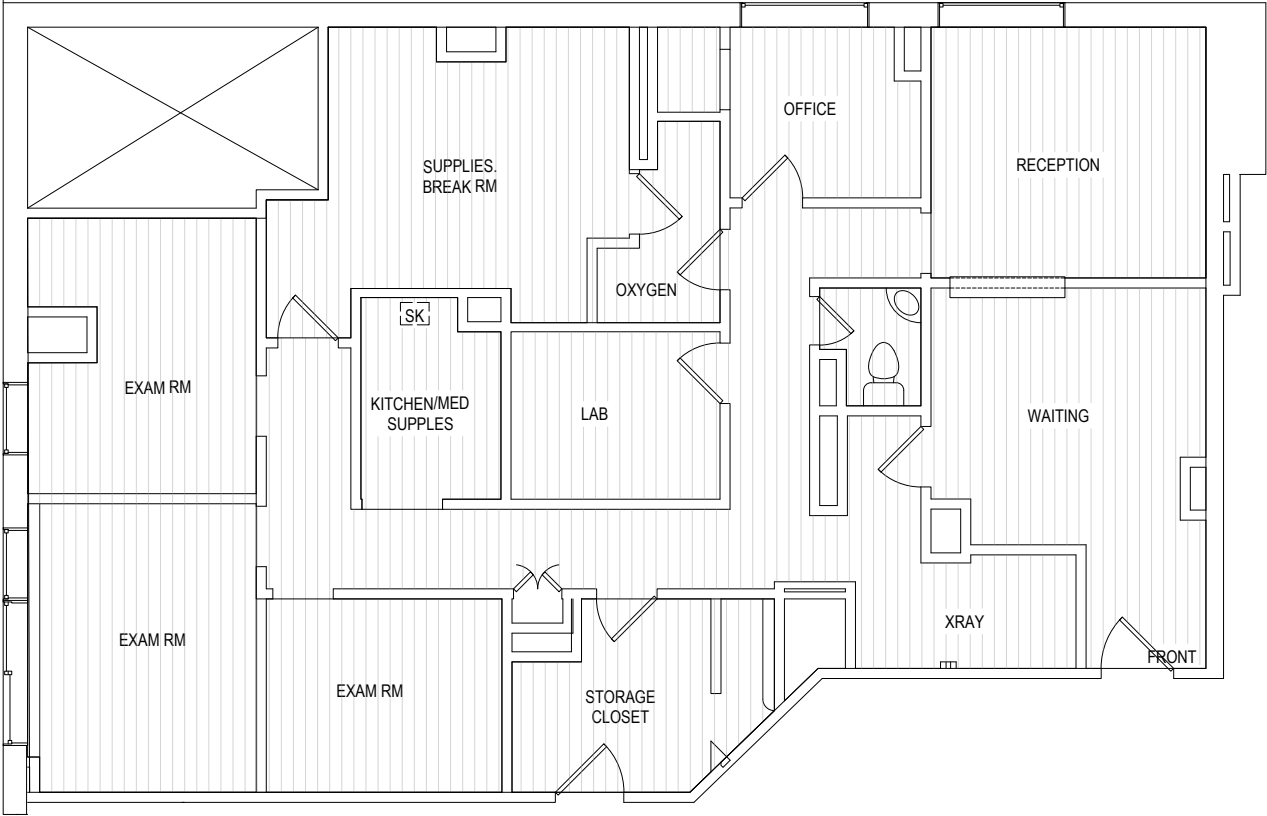


	POPULATION	DAYTIME POPULATION	AVG. HH INCOME	HOUSEHOLDS
1 MILE	14,516	10,758	\$163,271	5,651
3 MILES	139,066	105,493	\$137,820	68,258
5 MILES	349,893	342,452	\$130,233	164,510

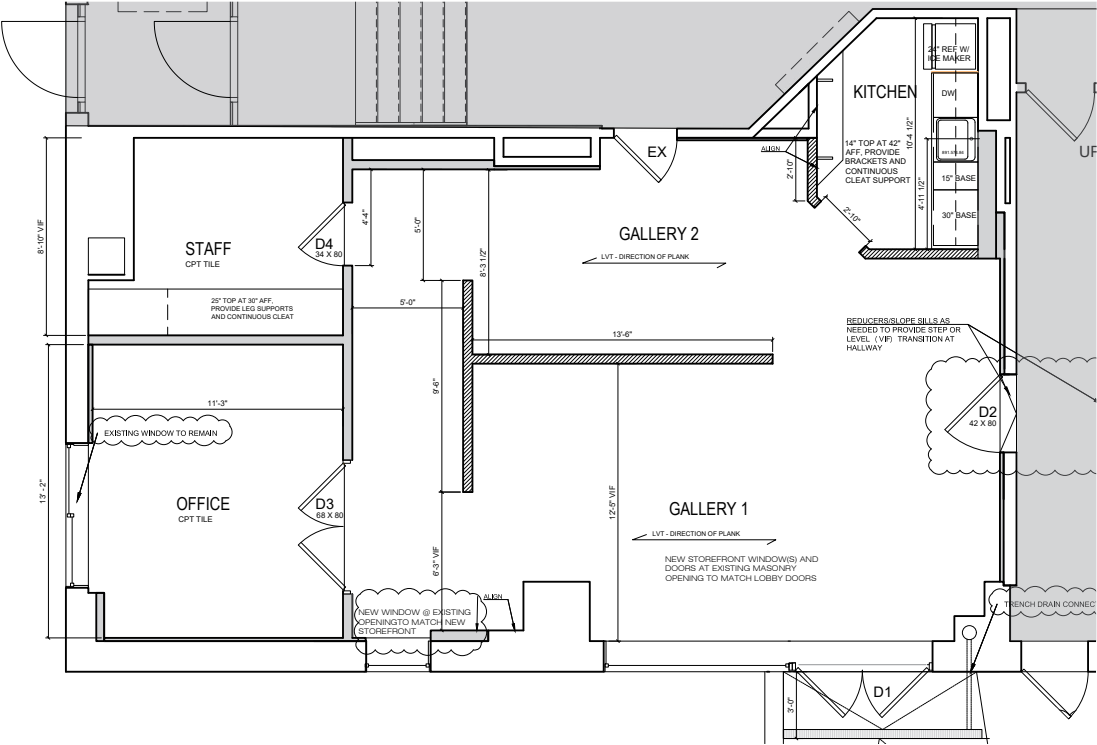


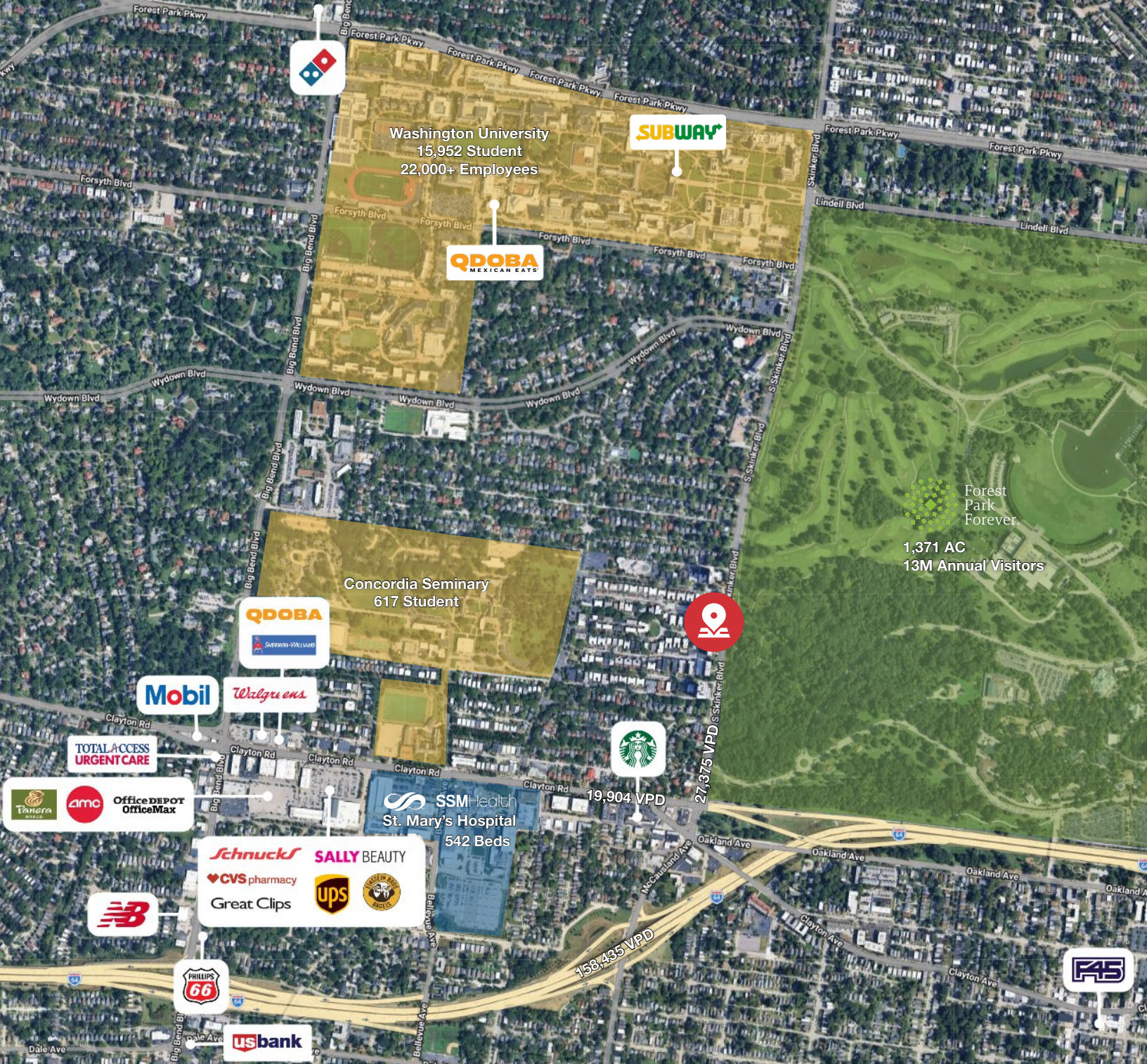
Floor Plans

1,405 SF
Former Dental Office



1,096 SF
Retail / Gallery Space





William Barnes

d (314) 994 - 4401
c (314) 578 - 1708
wbarnes@naidesco.com



Michelle Goodwin, CCIM

d (314) 994 - 4944
c (636) 236 - 9802
mgoodwin@naidesco.com



NAIDESCO

8112 Maryland Ave, Suite 300
St. Louis, MO 63105
(314) 994 - 4800
naidesco.com