

For Sale or Lease



2239 Banksville Road Pittsburgh, PA 15216

Two (2) story commercial building

Total: 10,567 SF

Paved parking: 35 vehicles

Built: 1993 / steel frame & concrete

Conditioned throughout

Power: 120/208V - 3 phase

Site:

- Land Area: 26,271 SF
- Zoned: HC / Highway Commercial
- Traffic controlled intersection; easy access north or south
- 2020 AADT: 23,000
- Frontage: 210' Banksville / 92' Wenzell Avenue

Taxes: \$14,907

Demographics



2021 Total Population



2021 Households

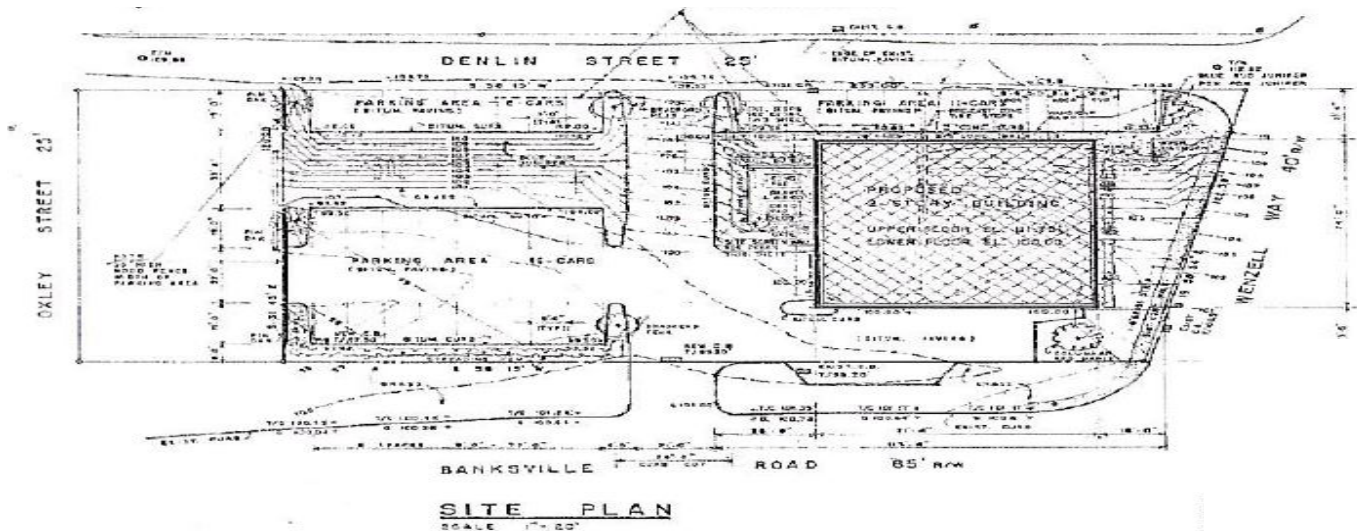


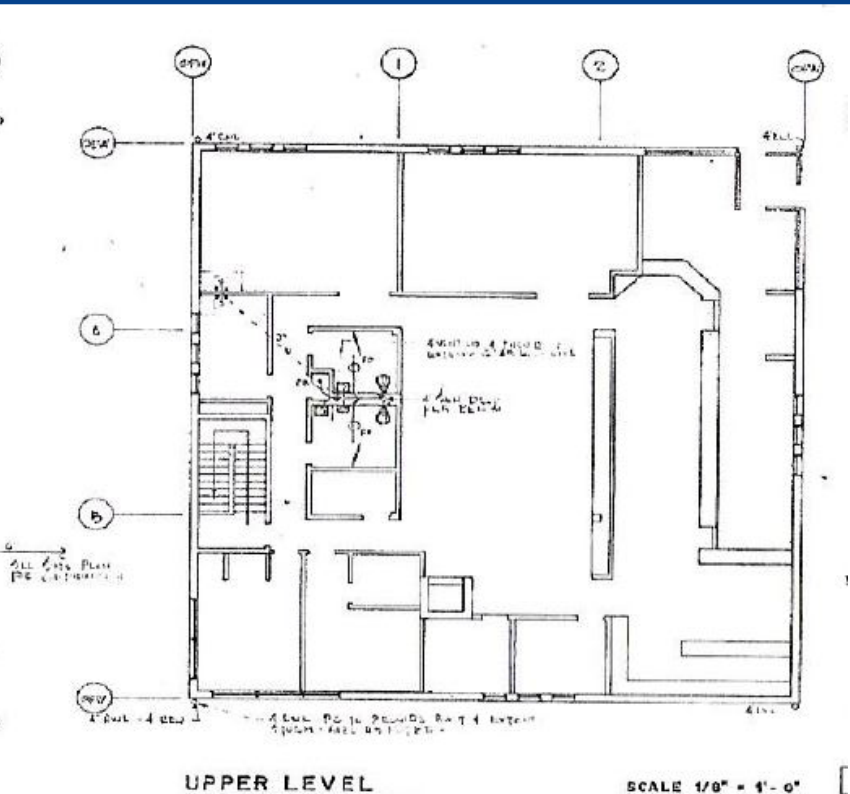
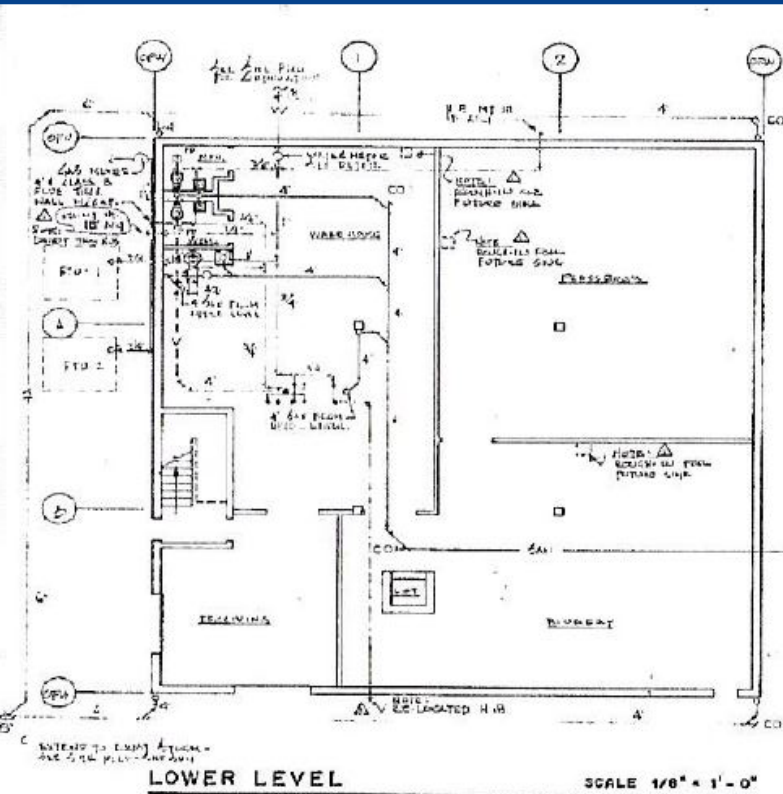
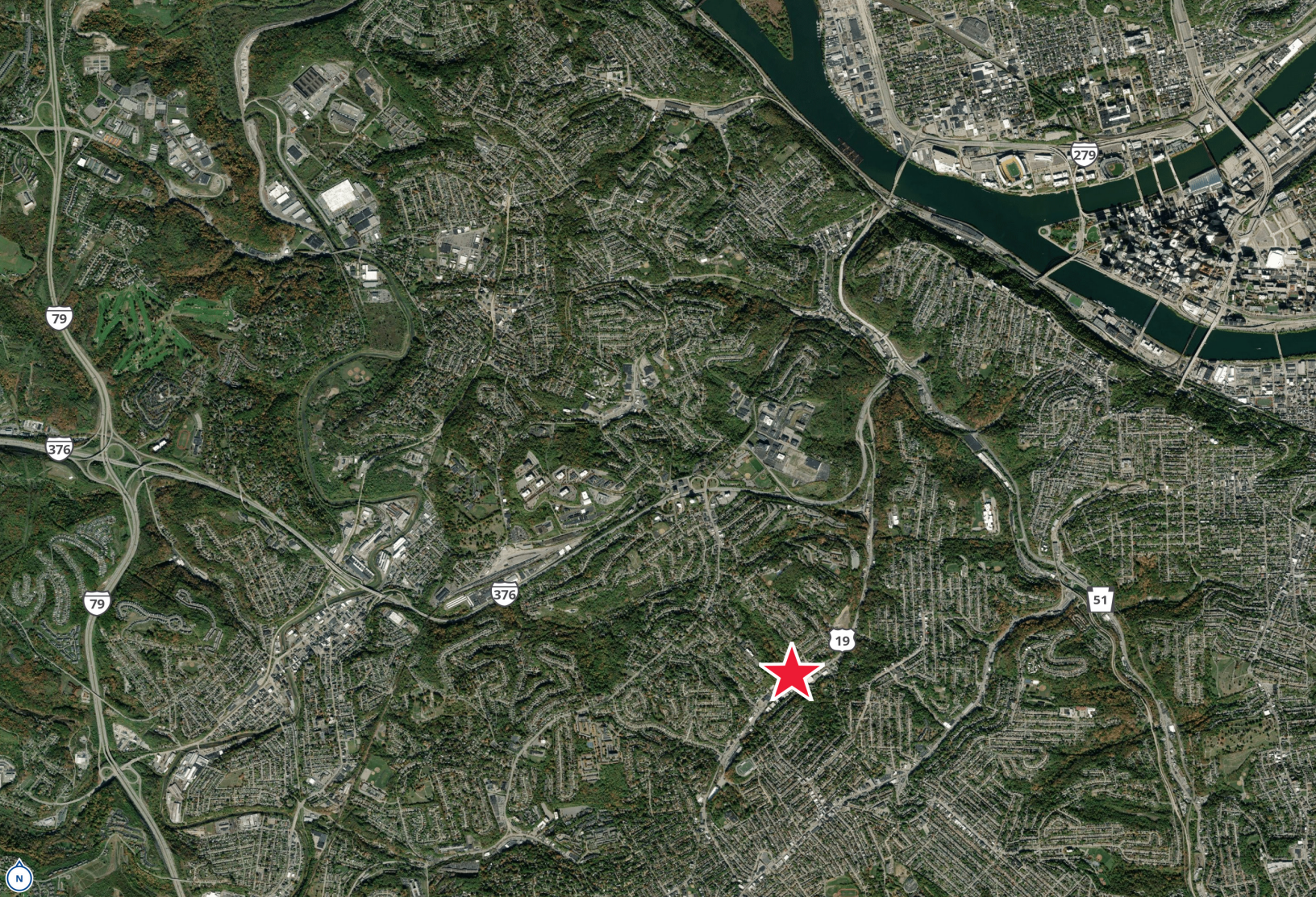
Average Household Income



Median Home Value

	1 Mile	3 Miles	5 Miles
2021 Total Population	19,100	140,707	322,412
2021 Households	9,046	64,212	144,365
Average Household Income	\$78,741	\$86,775	\$83,934
Median Home Value	\$138,763	\$156,291	\$159,482





Exterior Photos



Interior Photos



Contact

Raymond Orowetz, P.E.
Senior Vice President | Pittsburgh
Industrial Brokerage
Direct: +1 412 515 8528
ray.orowetz@colliers.com



525 William Penn Place, Suite 3510
Pittsburgh, PA 15219
P: +1 412 321 4200
F: +1 412 321 4400

Copyright © 2021 Colliers International. Information herein has been obtained from sources deemed reliable, however its accuracy cannot be guaranteed. The user is required to conduct their own due diligence and verification.