

KAMEHAMEHA SHOPPING CENTER

RETAIL AVAILABLE FOR LEASE



1620 N SCHOOL STREET HONOLULU, HI 96817

Intro

Retail Convenience at its Best in Honolulu

Welcome to Kamehameha Shopping Center, a vibrant destination located in the heart of Honolulu, Hawai'i. Nestled on the bustling junction of Likelike Highway and School Street, this double-anchored center caters to the diverse communities of Kalihi, Kapālama, Salt Lake, Pālama, and Nu'uanu. Its strategic location near the H-1 ensures easy access for neighboring residents and commuters heading towards Kāne'ohe and Kailua.

	1-MILE	3-MILE	5-MILE
TOTAL POPULATION	51,845	176,203	319,237
TOTAL HOUSEHOLDS	13,059	64,221	122,823
AVG. HOUSEHOLD INCOME	\$147,443	\$134,921	\$132,970
FAMILIES	10,050	38,346	70,021
MEDIAN AGE	39.9	42.5	42.0

Prepared by ESRI 2024



Property Overview

For over 60 years, Kamehameha Shopping Center has served as the community gathering place at the crossroads of central O'ahu, downtown Honolulu, and the Windward side of O'ahu.

- Bi-level parking structure
- Cornered near the Likelike Hwy and H-1 major roadways
- Close proximity to downtown Honolulu and Honolulu International Airport

GLA

122,700 SF

Anchor GLA

55,274 SF

Retail Available

1,000 - 5,000 SF

Available Spaces

INQUIRE W BROKERS

Land Area

7.967 ACRES

Year Built/Renovated

1959/1995

Anchor Tenants

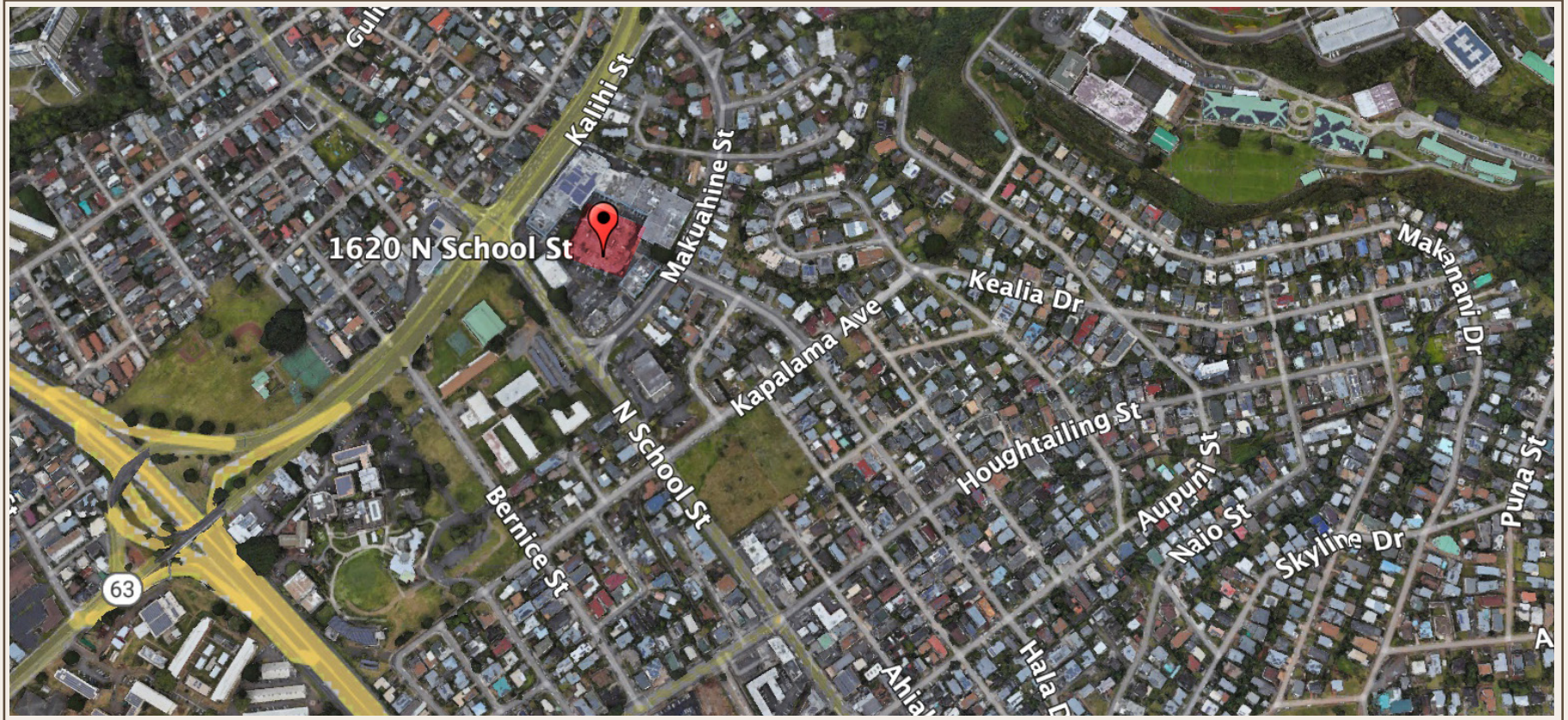
LONGS DRUGS
TIMES SUPERMARKETS

Parking

200 COVERED, 962
SURFACE SPACES

Key Tenants





For Retail Leasing

Deven D. Higa (S)

Senior Vice President
Agency Leasing
T +1808.220.4126
deven.higa@jll.com

Aaron K. Nakano (S)

Manager
Agency Leasing
T +1808.354.7268
aaron.nakano@jll.com



Although information has been obtained from sources deemed reliable, JLL does not make any guarantees, warranties or representations, express or implied, as to the completeness or accuracy as to the information contained herein. Any projections, opinions, assumptions or estimates used are for example only. There may be differences between projected and actual results, and those differences may be material. JLL does not accept any liability for any loss or damage suffered by any party resulting from reliance on this information. If the recipient of this information has signed a confidentiality agreement with JLL regarding this matter, this information is subject to the terms of that agreement. ©2024 Jones Lang LaSalle Brokerage, Inc. All rights reserved.