

# Office For Lease

3360 E. Russell Road, Las Vegas, NV 89120



AVISON YOUNG  
10845 Griffith Peak Drive, Suite 100  
Las Vegas, NV 89135  
O 702.472.7979 F 702.475.7545

BARTON HYDE  
D 702.475.7546  
barton.hyde@avisonyoung.com  
NV RE License# S.0041080

AVISON  
YOUNG

The information contained herein was obtained from sources deemed reliable; however, Avison Young makes no guarantees or representations as to the accuracy thereof. The presentation of this property is submitted subject to errors, changes of price or conditions prior to sale or lease, or withdrawal of notice.

**3360** | E. Russell Road  
Las Vegas, NV 89120

## PROPERTY HIGHLIGHTS

- 4,836 sf office building
- Located ±3 miles from the airport
- Walking distance to many retail amenities and dining services
- Nearby bus stop
- Direct Russell Road frontage
- Traffic count: 22,000 cars per day on Russell Rd.

## LEASING DETAILS

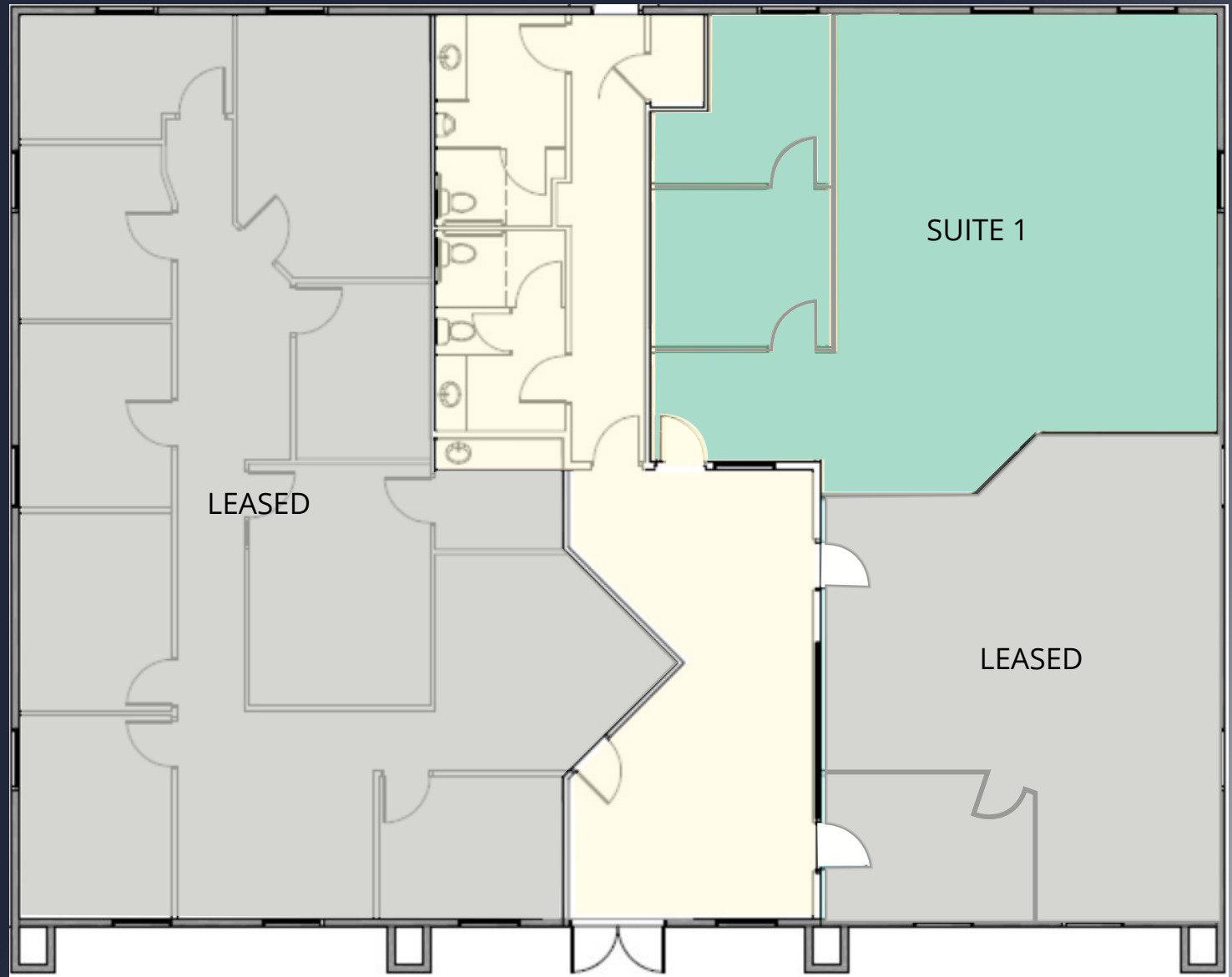
- 1,350 sf available immediately
- \$1.25/sf Net
- \$0.40/sf CAM
- Utilities included in base rent
- Monument and building signage
- Common area
- Flexible lease terms



# 3360

E. Russell Road  
Las Vegas, NV 89120

## Floorplan



### AVAILABLE :

#### SUITE 1 / 1,350 sf

- Reception
- 2 private offices and open work area
- Restrooms located in common area
- \$1.25/sf Net
- \$0.40/sf CAM

Drawing not to scale.  
For illustration purposes only.



