

Sauvé & Associates
Commercial Real Estate

Prime Retail Space for Lease in Old Pasadena

35 E. Colorado Blvd., Pasadena, CA 91105

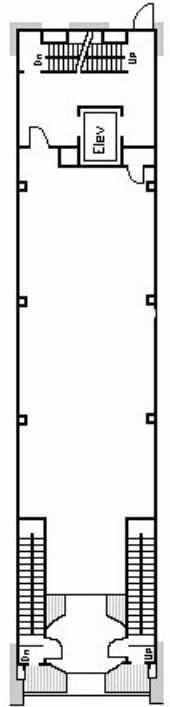


Formerly T-Mobile, this retail space is located in the very heart of Old Pasadena on prominent Colorado Boulevard.

- ◆ Carefully restored to maintain historic detail with entry area brought back to original design.
- ◆ New retail glass frontage, facing Colorado Boulevard
- ◆ Rear entrance with phone system entry
- ◆ Building signage
- ◆ Awning Security curtain

Approx. 2,528 R.F.S.

This 20-block area offers more than 130 specialty shops, retail stores, boutiques and 80+ restaurants. Easy access to the #210 & #134 Freeways as well as walking distance to the Metro Gold Line Station.



Colorado Blvd.

626.585.4321

Norm Sauvé nsauve@sauverec.com DRE#00937271

12 South Raymond Avenue, Suite A, Pasadena, California 91105

www.sauve-associates.com DRE # 02117417