

FOR SALE

WHITNEY
Commercial Real Estate Services

1901 JAMES ST S, ST. MARYS



NEWLY CONSTRUCTED 25,340 SF INDUSTRIAL BUILDING ON 4.044 ACRES

This newly constructed, state-of-the-art industrial building offers 25,340 SF of versatile space, designed to meet a wide range of industrial needs. With clear heights ranging from 19'9" to 24', the facility is equipped with Ventex air exchange units, in-floor radiant heating, modern office space, both dock-level and drive-in loading, 3-phase power (600A / 600V), and a durable steel roof.

Zoned M2 (General Industrial), this property accommodates a variety of permitted uses including manufacturing and assembly, warehousing, fuel storage and supply, and more.

Ideally located within convenient commuting distance to Stratford, London, Woodstock, and Ingersoll, this facility is perfect for businesses seeking a strategic location with top-tier infrastructure.

BUILDING AREA | 25,340 SF

LAND AREA | 4.044 Acres

ZONING | M2-6

DRIVE-IN DOORS | 6

TRUCK LEVEL DOORS | 2

CLEAR HEIGHT | 19'9" - 24'

ASKING PRICE | \$5,995,000

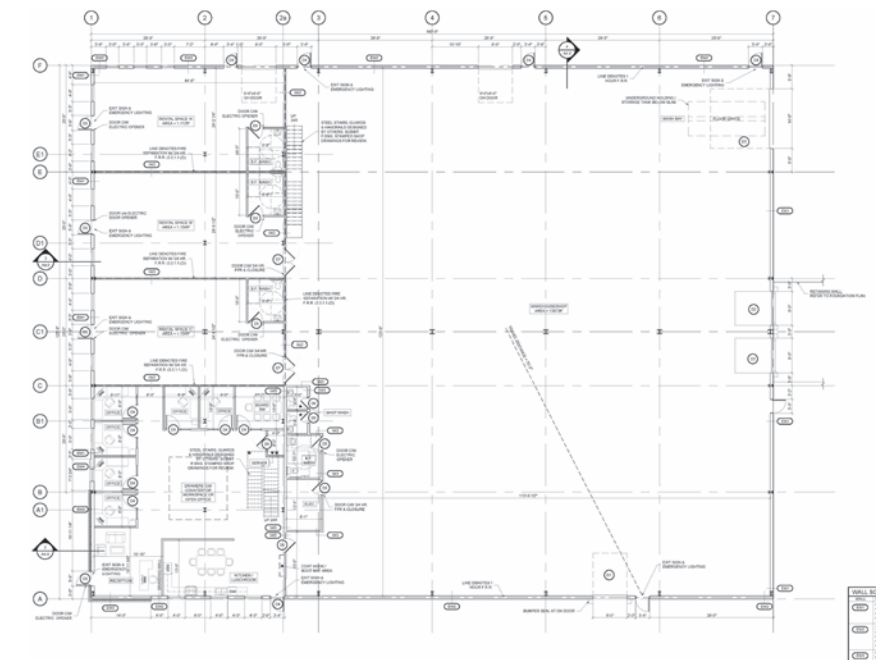
TAXES | Taxes To Be Assessed



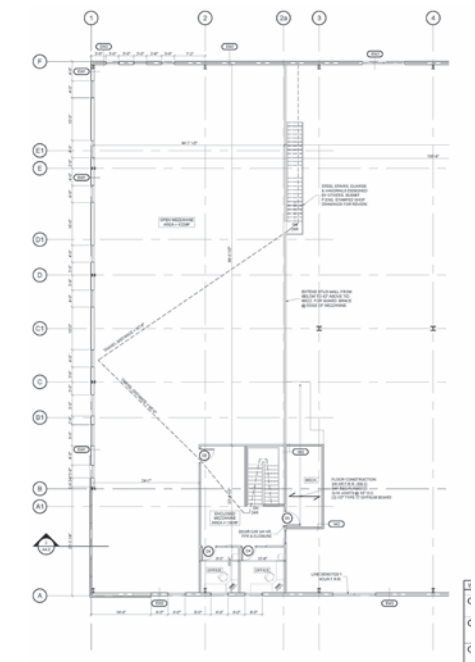
FLOOR PLAN

25,340 SF

MAIN FLOOR - 19,748 SF



MEZZANINE - 5,992 SF



Air Exchange
Units for Ventilation



Centrally Located
Between Cities



Minutes to
HWY 7



600 Amps
600 Volts



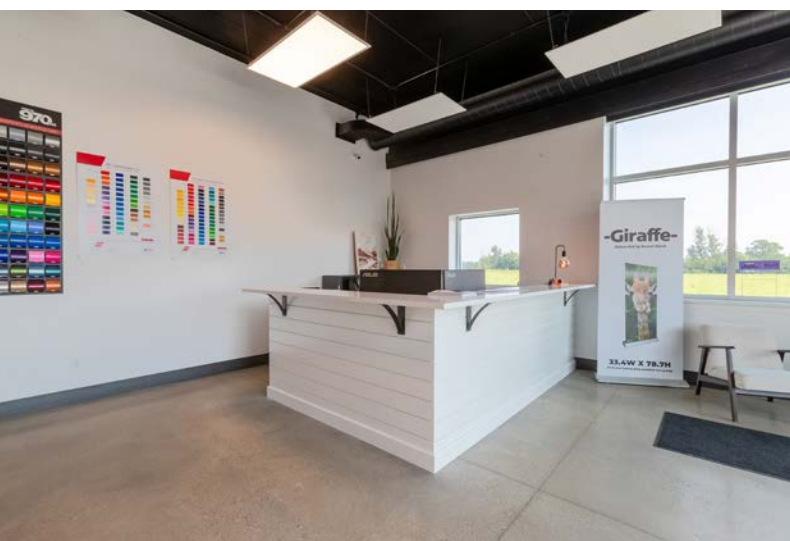
In-heat
Flooring



Structural
Mezzanine

PERMITTED USES (Complete list available upon request)

- An Assembling, manufacturing, fabricating, packaging, printing, publishing Plant or warehouse conducted and wholly contained within an enclosed building
- Auction establishment
- Automobile gas bar
- Automobile repair establishment
- Automobile service station
- Cold storage locker plant
- Contractor's yard or shop
- Equipment sales and rental business
- Factory outlet
- Farm implement sales and service establishment



LOCATION

DOWNTOWN ST. MARYS - 1.6KM

STRATFORD - 22KM

LONDON - 44KM

WOODSTOCK - 55KM

GRAND BEND - 59KM

LISTOWEL - 64 KM

KITCHENER - 70KM

HAMILTON - 132 KM

TORONTO PEARSON AIRPORT (YYZ) - 151 KM

TORONTO - 172 KM



Contact us for more information



Michael Lambert*, SIOR
Managing Partner, 2x Olympian
519.590.0286
michael.lambert@whitneyre.com



Matthew Hayward
Senior Sales Representative
519.270.4691
matthew.hayward@whitneyre.com



Jack Hayward
Sales Representative
519.270.3314
jack.hayward@whitneyre.com

WHITNEY
Commercial Real Estate Services

WHITNEY & Company Realty Limited, Brokerage
103 Bauer Place, Suite 2, Waterloo, ON N2L 6B5

519.746.6300 | www.whitneyre.com

The information provided herein, including but not limited to images, assumptions, estimates, and descriptions (the "Information"), is obtained from sources considered reliable. However, WHITNEY & Company Realty Limited ("Whitney") and its representatives, agents, or brokers do not warrant, guarantee, or make any representations as to the accuracy, correctness, or completeness of the Information. Whitney disclaims any liability or responsibility for the Information or for any reliance the recipient places upon it. Recipients are advised to perform their own due diligence to verify the Information before relying on it. The Information is subject to change, and any property referenced herein may be withdrawn from the market at any time without prior notice. Property outlines are approximate and may not represent actual boundaries. All Rights Reserved. © Whitney & Company Realty Limited, Brokerage - 2025 MLS

**Broker *Sales Representative