

An aerial photograph of a city street, likely in Denver, showing a mix of historic and modern architecture. A large parking lot with many cars is visible in the center. A prominent building with a red brick facade and a white pedimented entrance is on the left. A large, modern building with a rust-colored facade is in the background. A street with traffic lights and cars runs diagonally from the bottom right towards the top right. A small blue location pin icon is visible on the left side of the image.

Blue  
Crane

THE MASSEY

125 W CENTRAL AVE

# ABOUT THE MASSEY

---

Originally constructed in 1910 as a Renaissance Revival-style hotel, The Massey has long been a cornerstone of Bentonville's downtown landscape. For over 30 years, it housed the city library before being thoughtfully reimaged by Blue Crane. Today, it offers Class A office space on the second and third floors—where historic character meets modern function in the heart of the city.

The ground floor is home to Phat Tire Bike Shop, a cornerstone of Bentonville's cycling culture, and Scotch & Soda, a beloved cocktail bar. Tucked below, the Lady Slipper speakeasy offers an intimate, elevated escape. Surrounded by the Walmart Home Office, the Walmart Museum, Crystal Bridges Museum of American Art, and a vibrant downtown scene, The Massey delivers unmatched access to work, culture, and community.

With timeless architecture, high-end amenities, and a location in Northwest Arkansas's most dynamic district, The Massey is an ideal home for forward-thinking businesses. Now leasing the 3rd floor office —secure your space today.



# OFFERING

Lease Rate:	\$32.00 SF/YR + NNN
Square Feet:	Third Floor 6,744 RSF Office
Property Type:	Class A Office
Location:	Downtown Bentonville
Tenant Improvements:	As Is / Partially Furnished
Building Amenities:	Kitchen, 15 Private Offices, Elevator Access, 2 Conference Rooms

## FEATURES

- Historic Character, Modern Office Spaces – Beautifully restored with high-end finishes
- Prime Location – Downtown Bentonville, The Walmart Museum, and Crystal Bridges Museum of American Art
- Vibrant Retail & Hospitality Scene: Lady Slipper Speakeasy, Scotch & Soda, Phat Tire Bike Shop



# THIRD FLOOR

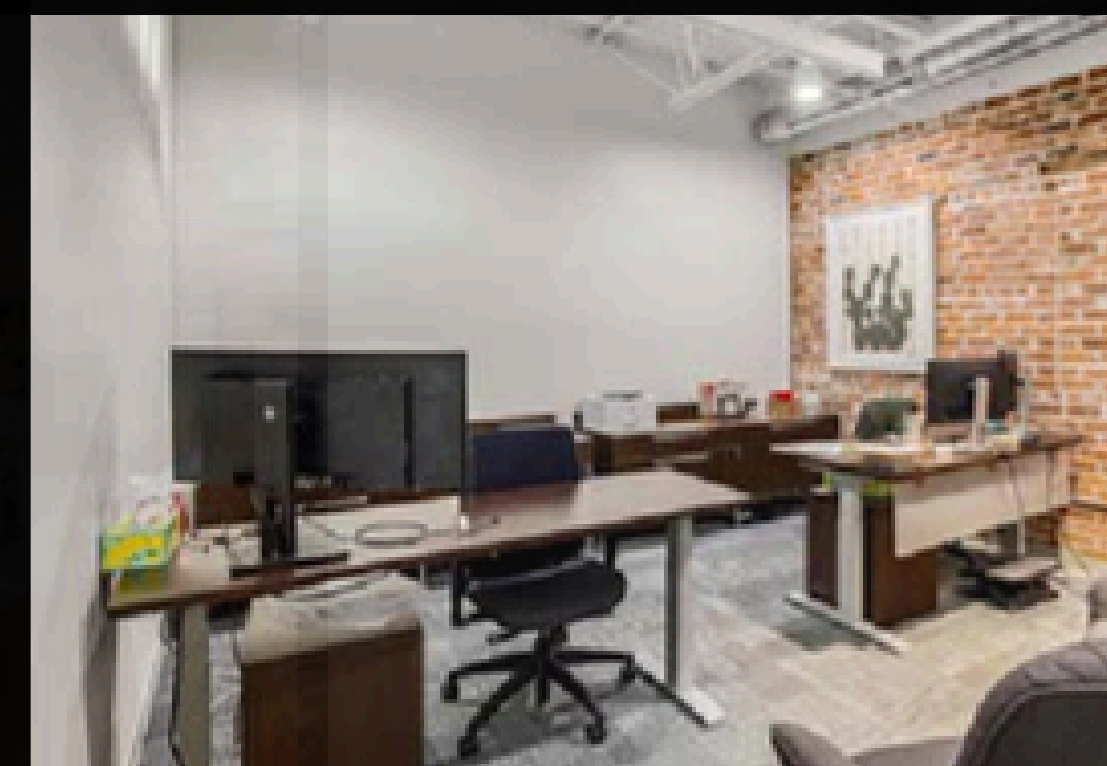
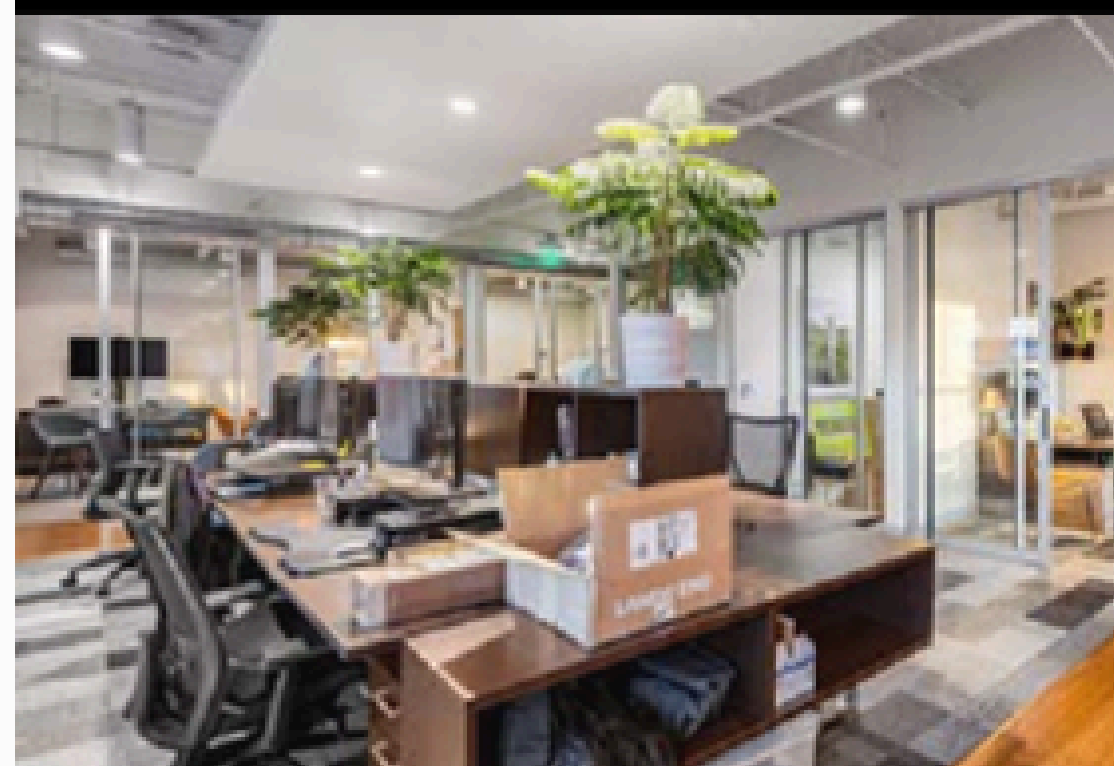
## INTERIOR PHOTOS

---

Designed for teams that value privacy and performance, the third floor of The Massey offers 17 private offices, 2 spacious conference rooms, a reception area, and minimal open space—ideal for focused work with room for collaboration. This floor pairs the building's historic character with a more modern edge, featuring clean lines, contemporary finishes, and an efficient layout tailored to productivity. Set in the heart of downtown Bentonville, it offers unmatched proximity to the city's top restaurants, shops, and business destinations.

### SIZE

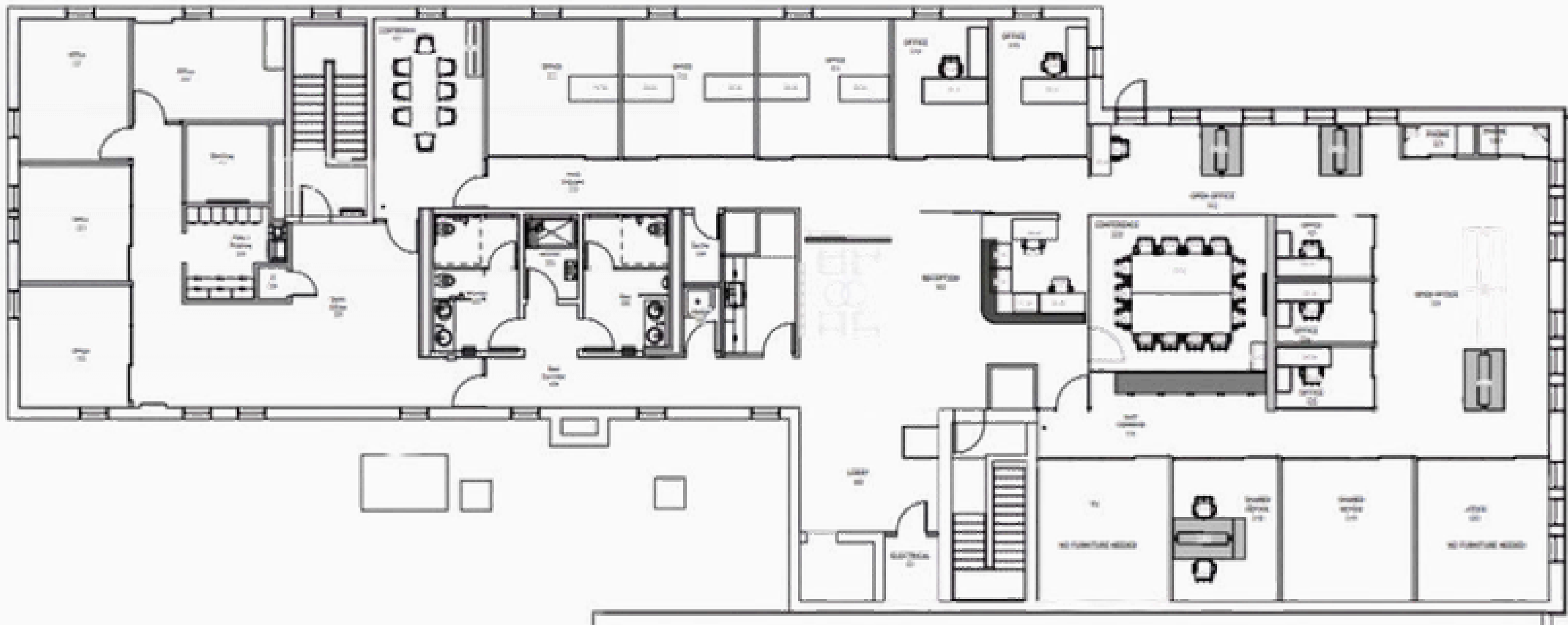
6,744 sq. ft.



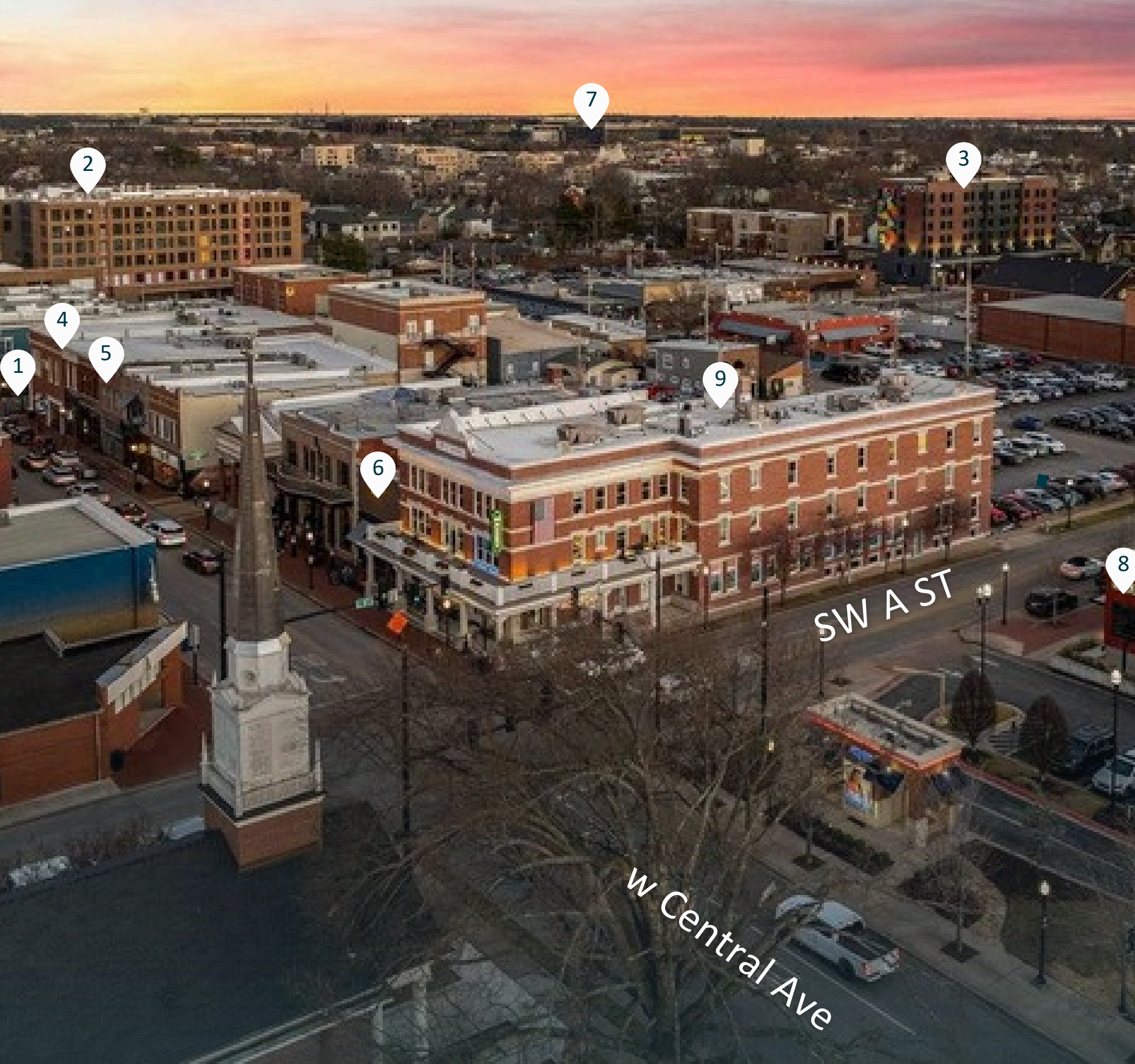
# THIRD FLOOR | 6,744 SF

FLOORPLAN

---







# LOCATION

1 - Downtown Bentonville Square

2 - The Compton Hotel

3 - The Motto Hotel

4 - Bentonville Taco and Tamale

5 - Ozark Mountain Bagel

6 - Scotch and Soda

7 - Walmart Home Office Campus

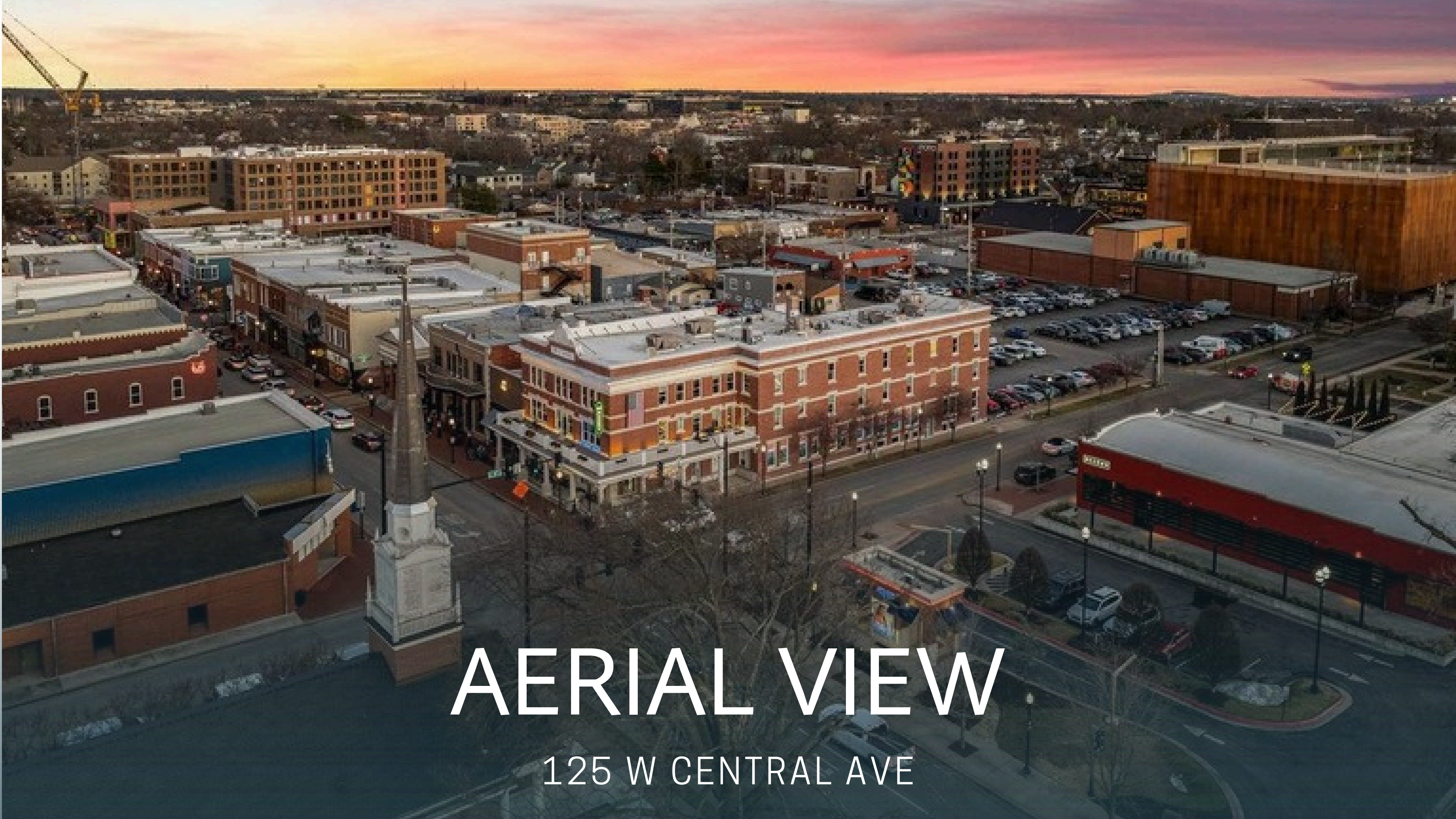
8 - Record Event Venue

9 - Lady Slipper Speakeasy



# EXTERIOR

125 W CENTRAL AVE



# AERIAL VIEW

125 W CENTRAL AVE

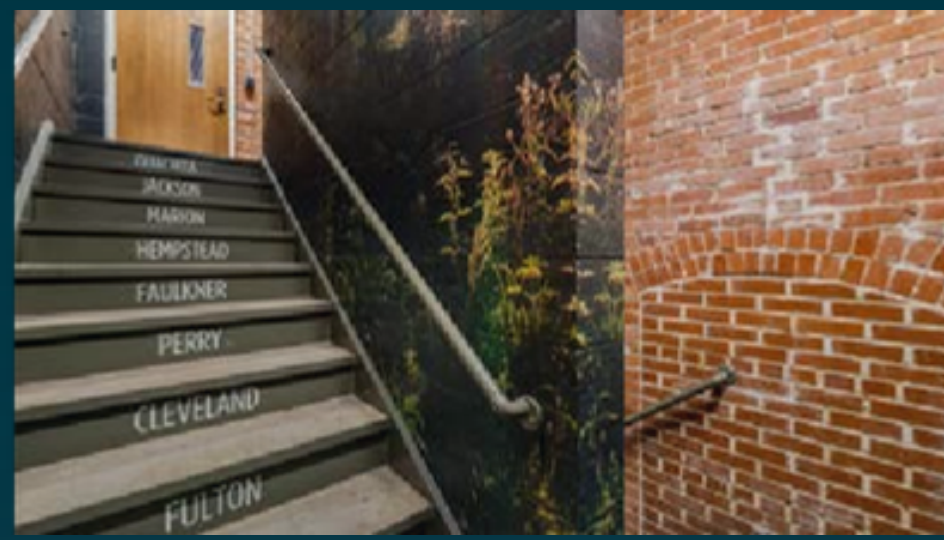
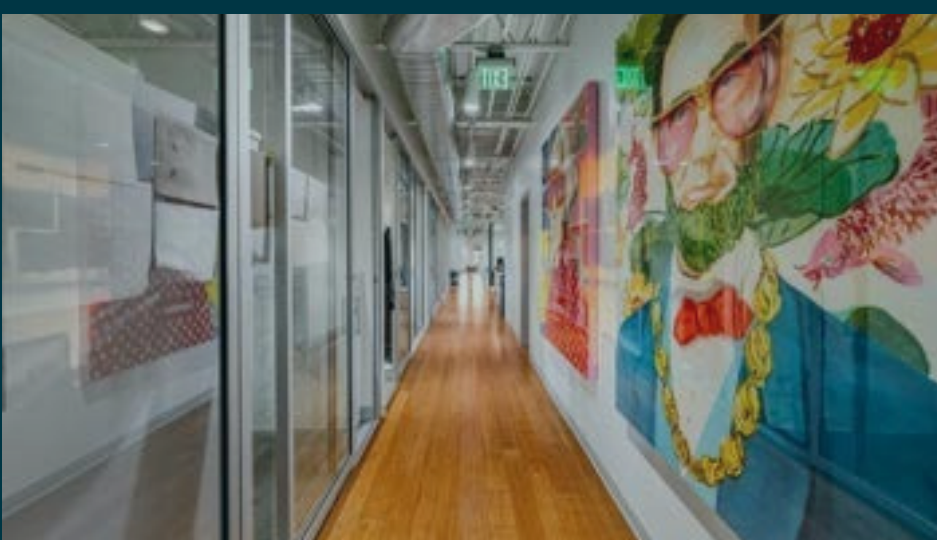




# AERIAL VIEW

125 W CENTRAL AVE





# INTERIORS

125 W CENTRAL AVE





# THE MASSEY

125 W CENTRAL AVE

# GET CONNECTED



**GAVIN MAGEE**

## COMMERCIAL LEASING MANAGER



(913) 449-6223



gmagee@bluecrane.us



bluecrane.us



100 NW 2<sup>nd</sup> St, Suite 300  
Bentonville, AR 72712

